



MARTIN CENTER
for the ARTS

EAST TENNESSEE STATE UNIVERSITY



James C. and Mary B. Martin Center for the Arts

Estimated completion: Late Spring Semester 2020

McCarty Holsaple McCarty, Architects & Interior Designers
Denark Construction, General Contractors

Building Occupants



- Mary B. Martin School of the Arts
 - Managing Overall Facility
 - ETSU Foundation Auditorium
- Department of Music
 - Recital Hall
 - 3 Rehearsal Rooms (Classrooms)
- Department of Theatre & Dance
 - Bert Bach Theatre
 - Scene & Costume Shops

** The Martin Center will not accommodate all space needs for the academic departments.

Improved Technical Capabilities

- Safer working conditions for faculty, staff, students, guest artists, and potential renters
- Flexible acoustical treatments to accommodate wide ranges of music genres and other performances
- Fully adjustable lighting and projection needs
- Proper floor treatments for both acoustics and performance needs, especially for dance concerts
- ETSU Foundation Auditorium includes professional level orchestra shell and large orchestra pit
- Stage wings, fly space, and orchestra shell
- Dressing rooms, green rooms, wardrobe, and loading dock required by musical theatre tours and other large tours



ADA Compliance



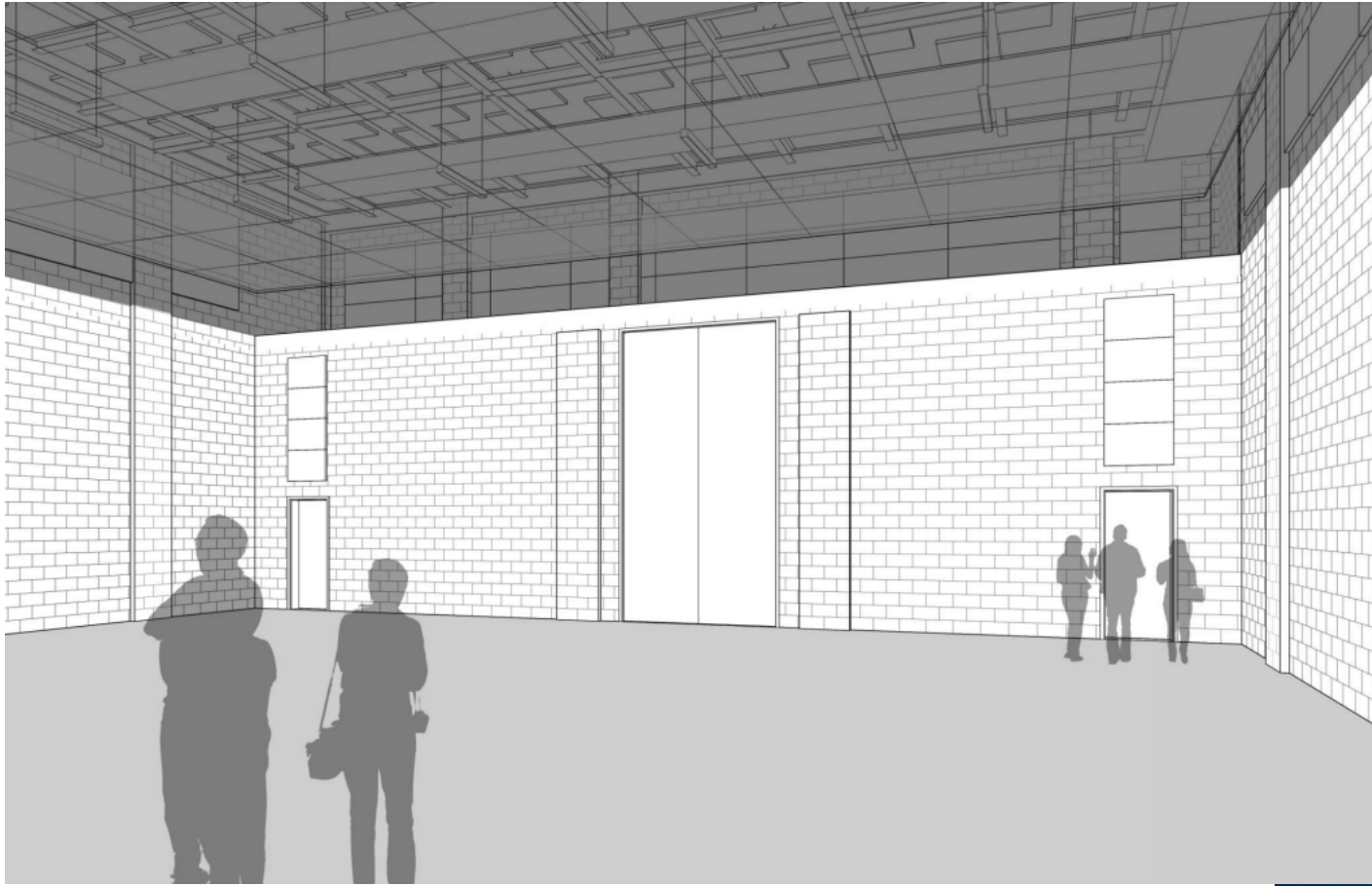
- Designated Handicap Parking spaces at rear of the building
- Drop-off area at rear of the building
- One-level elevation throughout the first floor—for both patrons and artists
- Elevator to second level
- ADA seating complies with current guidelines—number of seats and locations
- RF Hearing Assist systems in all three performance areas



- ETSU Foundation Auditorium



- Recital Hall



- Bert Bach Theatre



ETSU Arts Programming



SOUTHERN CIRCUIT
Tour of Independent Filmmakers



- ETSU Arts Units currently present over 200 events annually

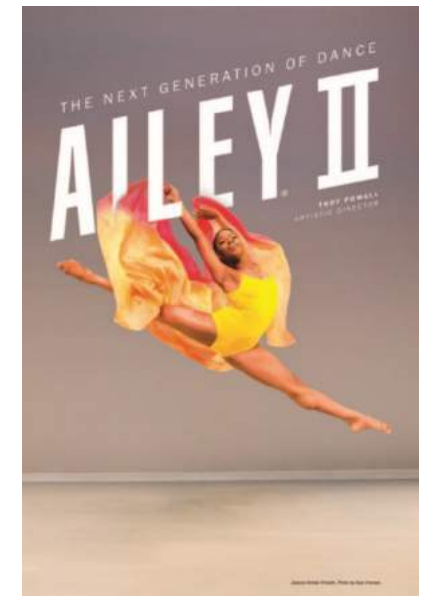
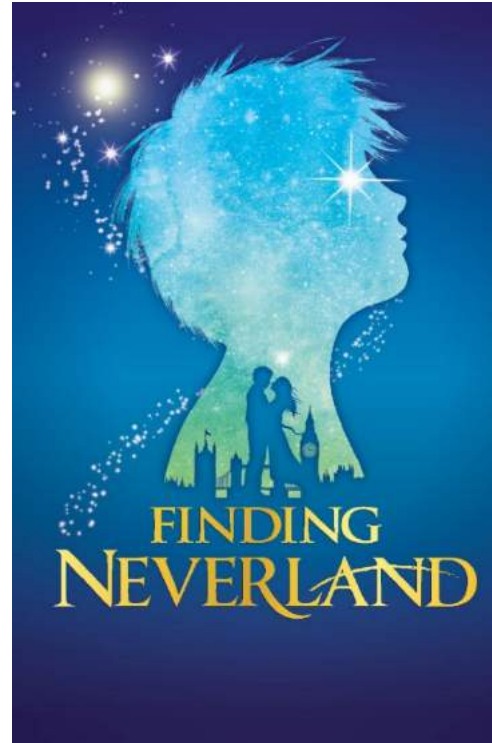
New Programming



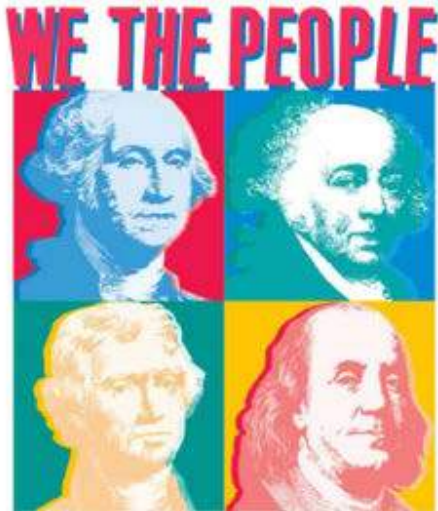
- Martin School of the Arts
 - “Fine Arts” Series with impact for ETSU curriculum
- Advisory Planning Committee—ETSU, community, and City representation
- New 10 Event Series—anticipated to attract crowds to fill 1,000-1,200 seats
 - Impact for regional tourism and economic development
- Selections of popular music
 - Jazz
 - Bluegrass, Country, and Celtic
 - Rock and Rockabilly
 - Tribute bands

Musical Theatre, Theatre, & Dance

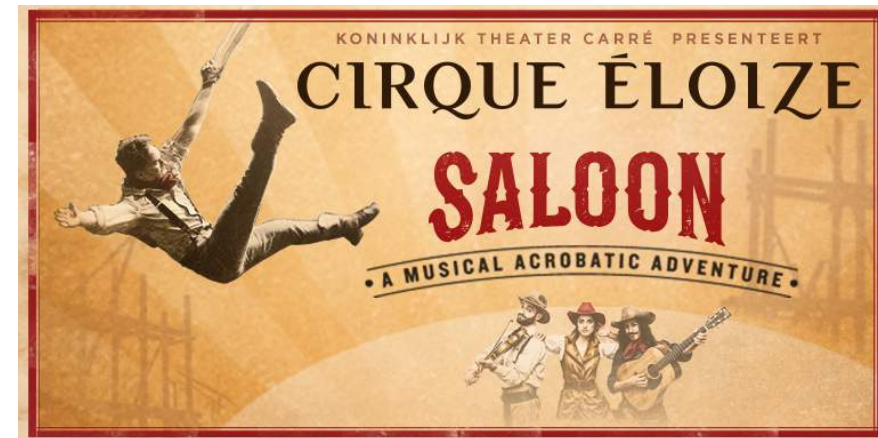
- “Broadway” Tours
 - One and two night musical theatre productions
 - *Hamilton* and *The Lion King* require minimum one week bookings
- Dance
 - Ballet
 - Modern
 - Folk Dances
 - Hip Hop and Percussive



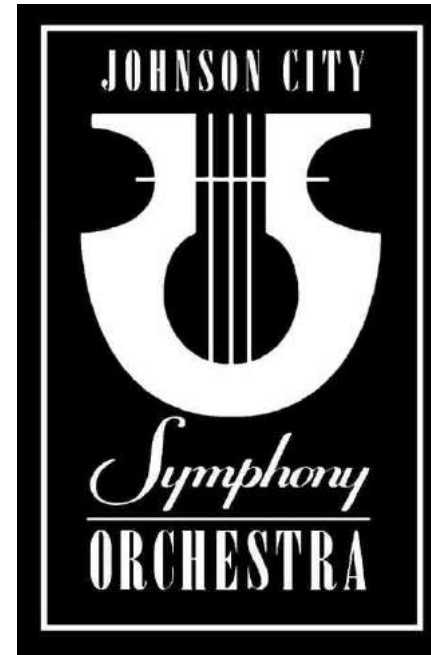
Comedy, Variety, and Family Programming



- Family Programming
- Other Performance Tours
 - Physical Theatre and Cirque
 - Comedy
 - Variety Acts



Hosting Other Events

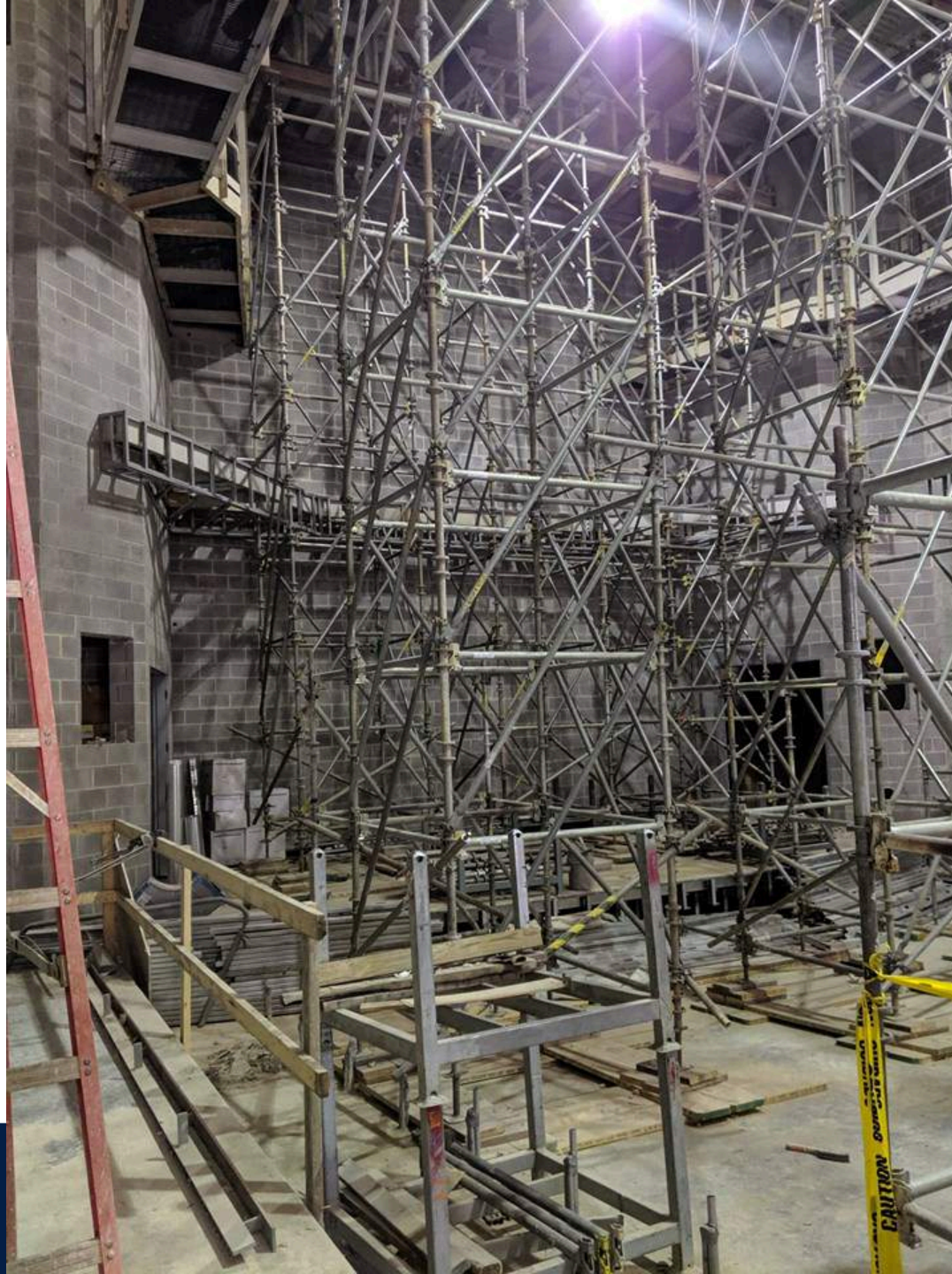


- ETSU activities—convocations and graduation needs
- Rental opportunities—regional arts organizations and other events





5/10/19



5/10/19



MARTIN CENTER
for the ARTS

EAST TENNESSEE STATE UNIVERSITY



5/10/19



5/10/19



5/10/19