

A Proposal to Preserve University Woods,
30 acres on the south end of ETSU's campus,
south of the railroad bypass,
by means of 1) a memo of understanding; 2) language in the master plan; 3) a public
dedication

Slides to accompany a 15-minute presentation delivered by
Kevin O'Donnell, Professor of English, ETSU Dept of Lit and Language, odonnell@etsu.edu
to ETSU's University Council, Dr. Wilsie Bishop, Presiding Chair
Monday January 14, 2019

Sources

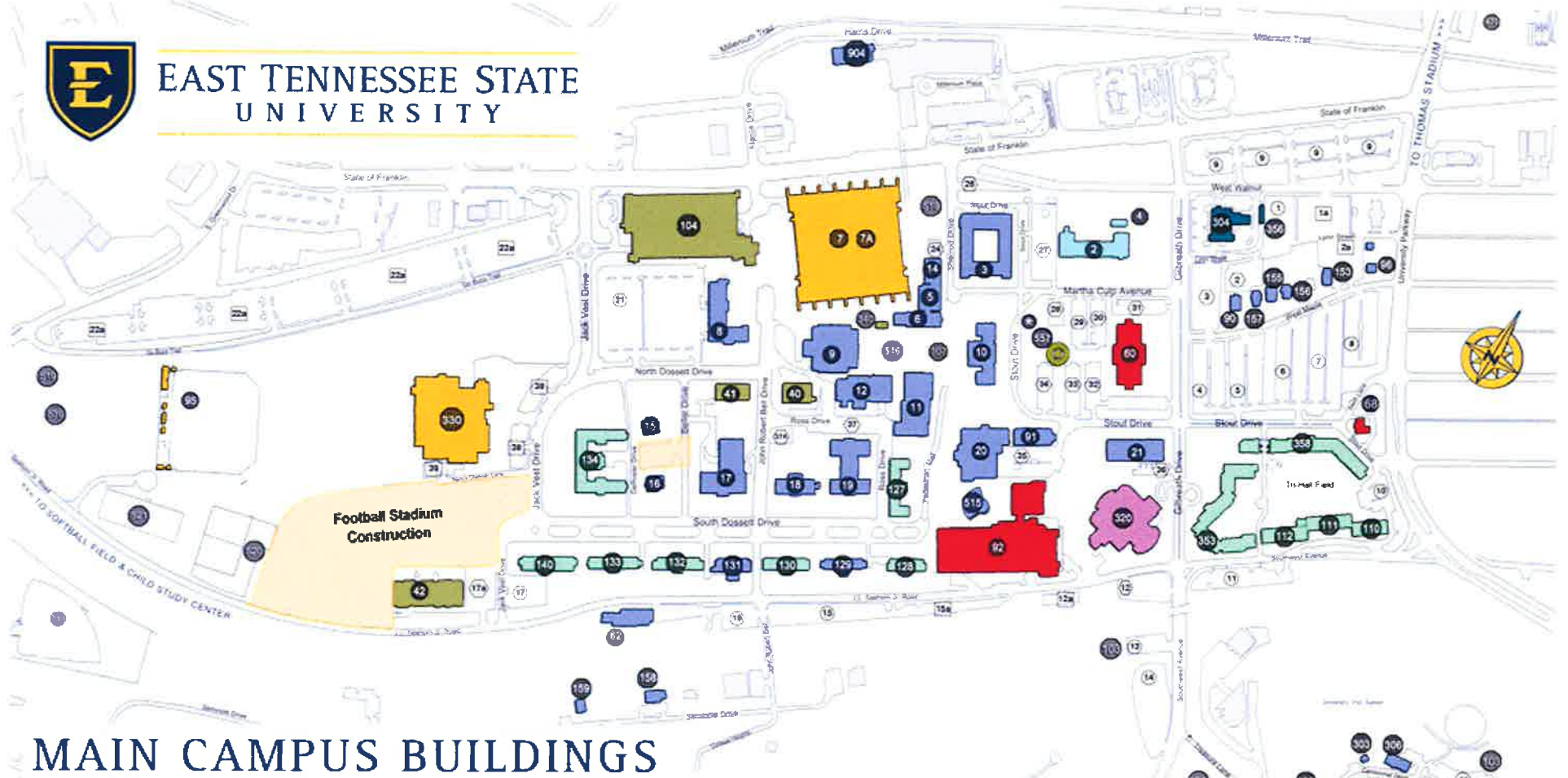
- A University's Story, 1911-1980: East Tennessee State University. By Frank B. Williams, Jr. East TN State U Press, Johnson City TN, 1991.
- Where There Are Mountains: An Environmental History of the Southern Appalachians. By Don Davis. University of Georgia Press, Athens GA, 2003.
- Among the Ancients: Adventures in the Eastern Old-Growth Forests. By Joan Maloof. Ruka Press, Washington DC, 2011.
- The Hidden Life of Trees: What They Feel, How They Communicate. By Peter Wohlleben. Translation by Jane Billingham. Greystone Books, Vancouver CA, 2016.
- Last Child in the Woods: Saving Our Children From Nature-Deficit Disorder. By Richard Louv. Algonquin Books, Chapel Hill NC, 2005.

Photos

- Charlie Warden, Lead Photographer, ETSU University Relations
- Historic photos from the archives of Appalachia

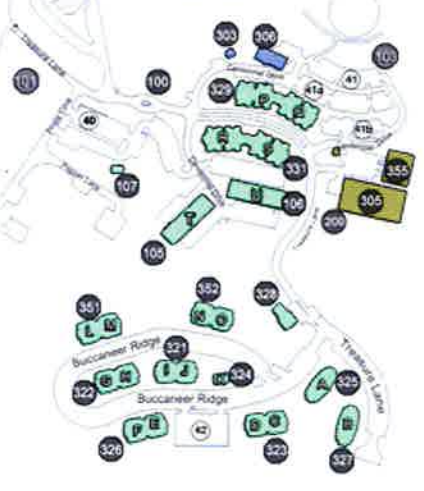


EAST TENNESSEE STATE UNIVERSITY



MAIN CAMPUS BUILDINGS

- | | | | | |
|--|--|---------------------------------------|---|-----------------------------------|
| 2 Alexander Hall (University School) | 305 Central Receiving and Physical Plant Warehouse | 310 Harry D. Powell Observatory | 104 Parking Garage | 340 The Tree House |
| 515 Amphitheater | 332 Child Study Center | 18 Hutcheson Hall | 68 Parking Services | 103 University Woods |
| 62 Art Annex | 41 Clark Building | 104 Information & Public Safety | 90 Planning & Analysis | 102 University Woods Pavilion |
| 6 Ball Hall | 96 Continuing Studies | 513 Intramural Fields | 130 Powell Hall | 125 Veterans Dwart Center Gardens |
| 330 Baster Center for Physical Activity (BCPA) | 155 Cross Disciplinary Studies | 157 Internal Audit | 40 Power Plant | 307 Veterans Memorial |
| 539 Baster Challenge Course | 92 D.P. Culp University Center | 304 Johnson City Family Practice | 516 The Quad | 8 Warf-Pickel Hall |
| 94 Betty Baster Softball Field | 520 Dave Mulina Tennis Complex | 356 JCFP - Modular Office | 200 Recycling Center | 350 Warren-Greene Golf Center |
| 537 Bike Course | 7A David E. Walker Track at Gerity Field | 19 Lamb Hall | 91 Reece Museum | 107 Wash House |
| 42 Bond Building | 110 - 112 Davis Apartments | 159 Log Cabin (Art) | 21 Rogers-Stout Hall | 132 West Hall |
| 9 Brooks Gymnasium | 101 Disc Golf Course | 134 Lucile Clement Hall | 12 Ross Hall | 306 WETS-FM Radio Station |
| 3 Brown Hall | 133 Dosssett Residence Hall | 140 Luntford Apartments | 12 Sam Wilson Hall | 17 Wilson-Wallis Hall |
| 321 -331, 351, 352 Buccaneer Ridge | 7 ETSU/MSHA Athletics Center (Men-Dome) | 15 Lyle House | 380 Sherrod Library | 124 Yellow Bike Repair Building |
| 100 Buc-Ridge Security Building | 16 Earnest House | 105 - 106 Marnad Student Apts T-U | 128 Stone Hall | 129 Yoakley Hall |
| 60 Burgin-Dosssett Hall | 10 Gilbreath Hall | 5 Mathis Hall | 95 Summers-Taylor | 153 908 W. Maple St. |
| 14 Burleson Hall | 349 Golf Maintenance Building | 9 Memorial Hall | Soccer Complex | |
| 11 Campus Center Building | 156 Government Relations | 4 Modular Classrooms (Alexander Hall) | 355 Surplus Warehouse | |
| 557 Canlon & Alumni Plaza | 353 Governors Hall | 20 Nick's Hall | 303 Telecommunications | |
| 127 Carter Hall | | 904 Newcomer Digital Media Center | 158 Tennessee Early Intervention System | |
| 358 Centennial Hall | | 519 Outdoor Track | 470 Thomas Baseball Stadium | |



Parking

- ◀ Student
- ◀ Faculty/Staff
- ◀ Undesignated

Building Types

- Academic
- Administrative
- Library
- Recreation
- Housing
- Support

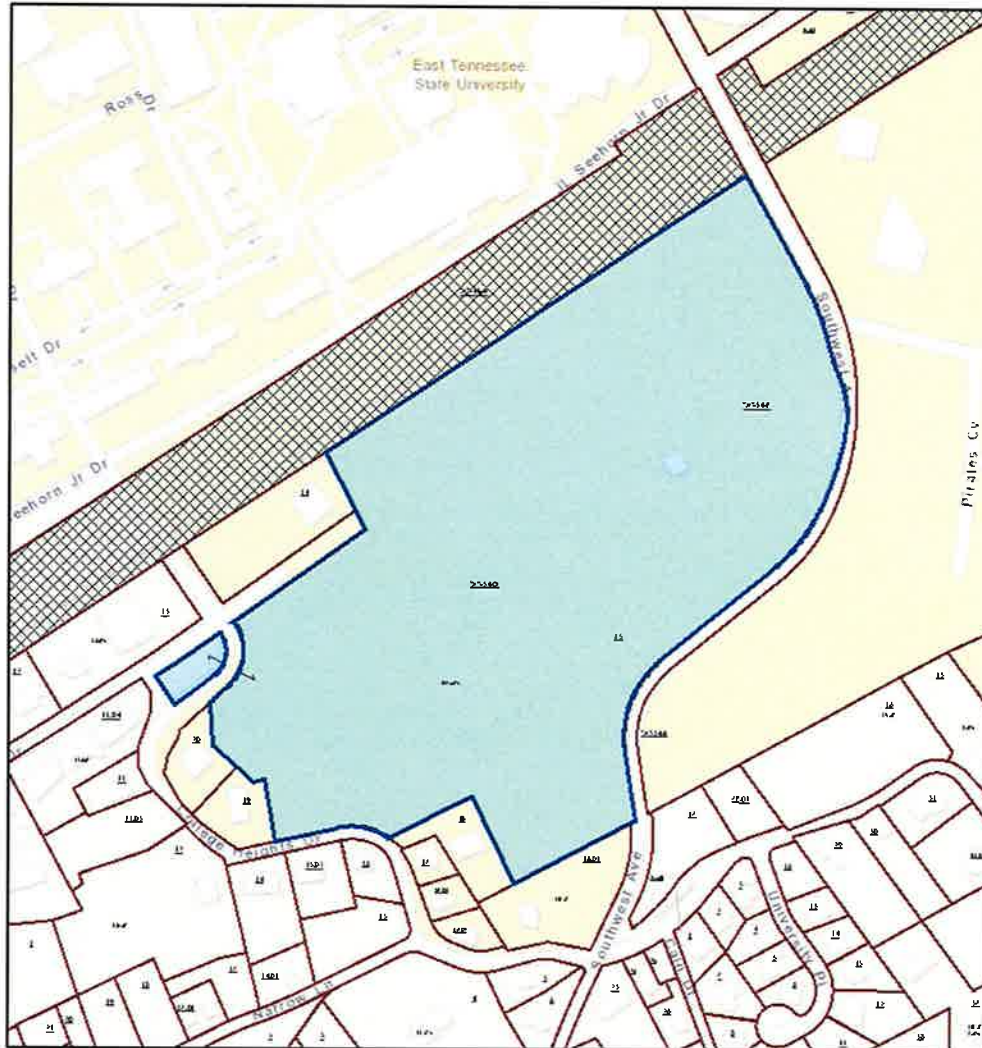
★ Patrick Dougherty
Socks SculpturePat.

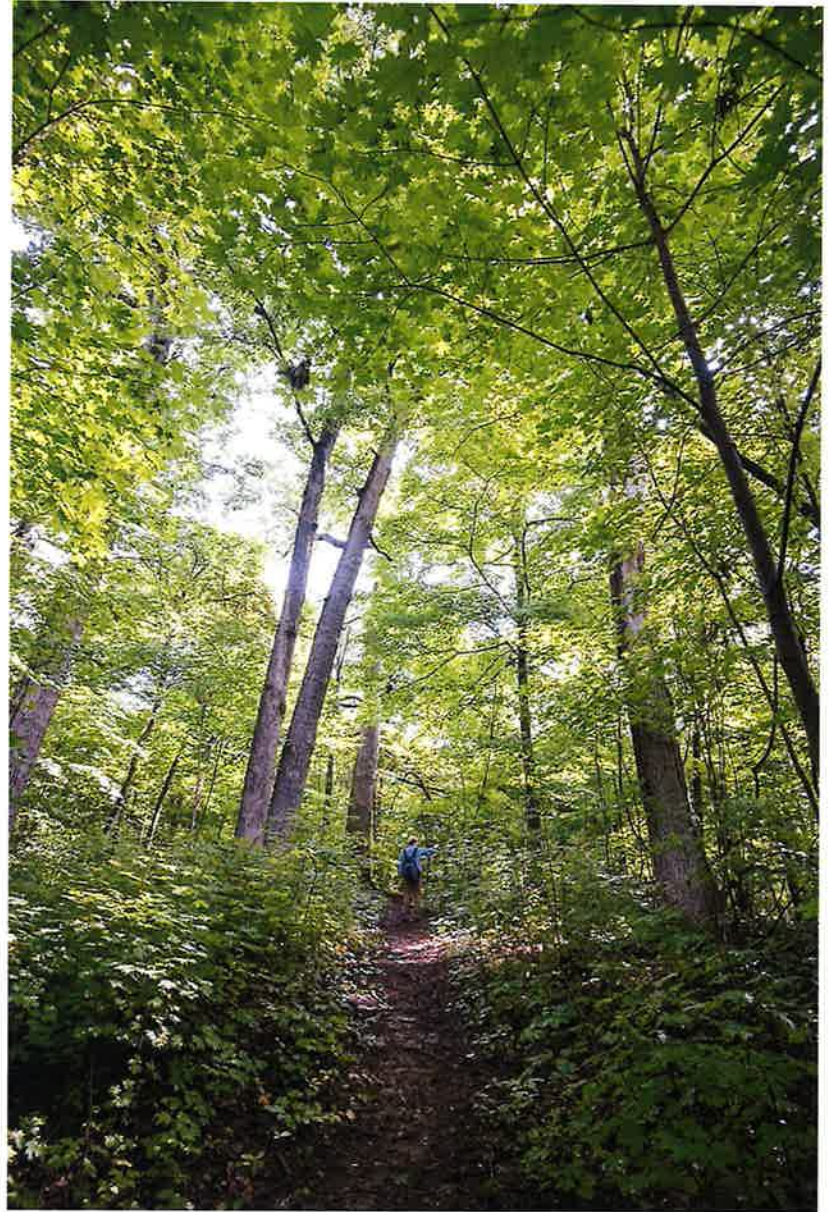
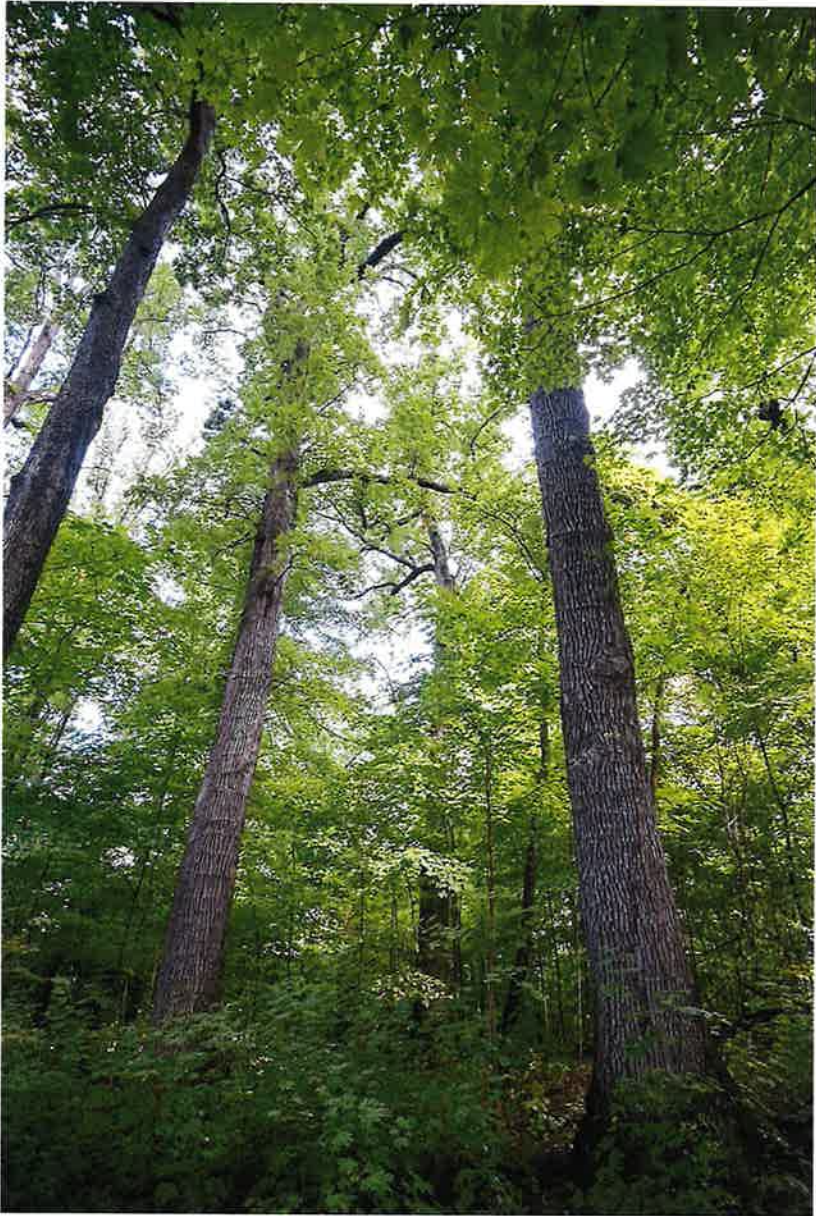


ETSU University Woods: Proposed Protected Area

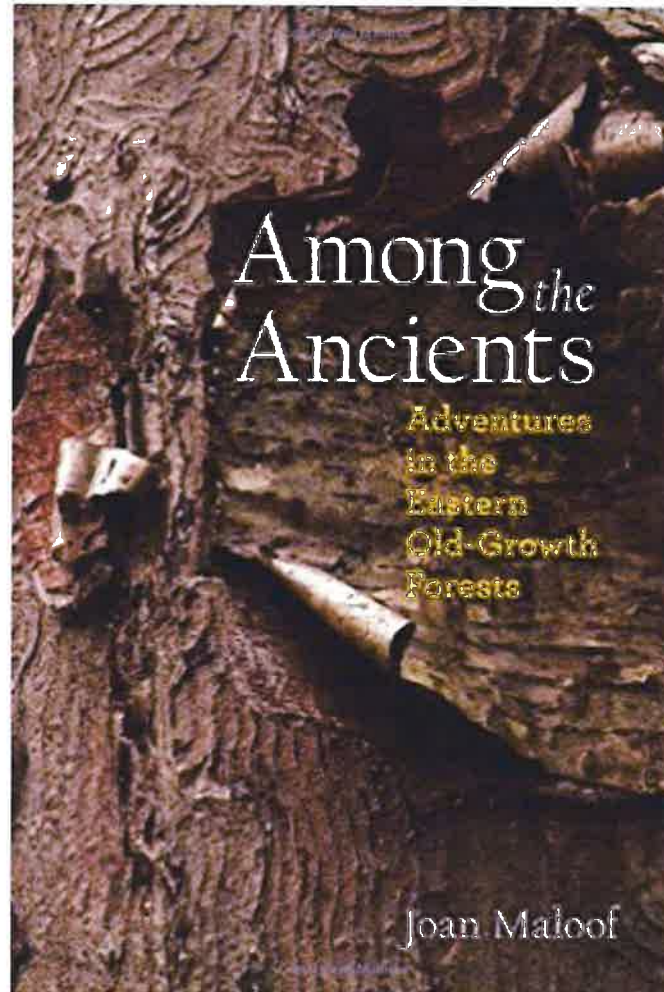


Washington County - Parcel: 0540 A 015.00









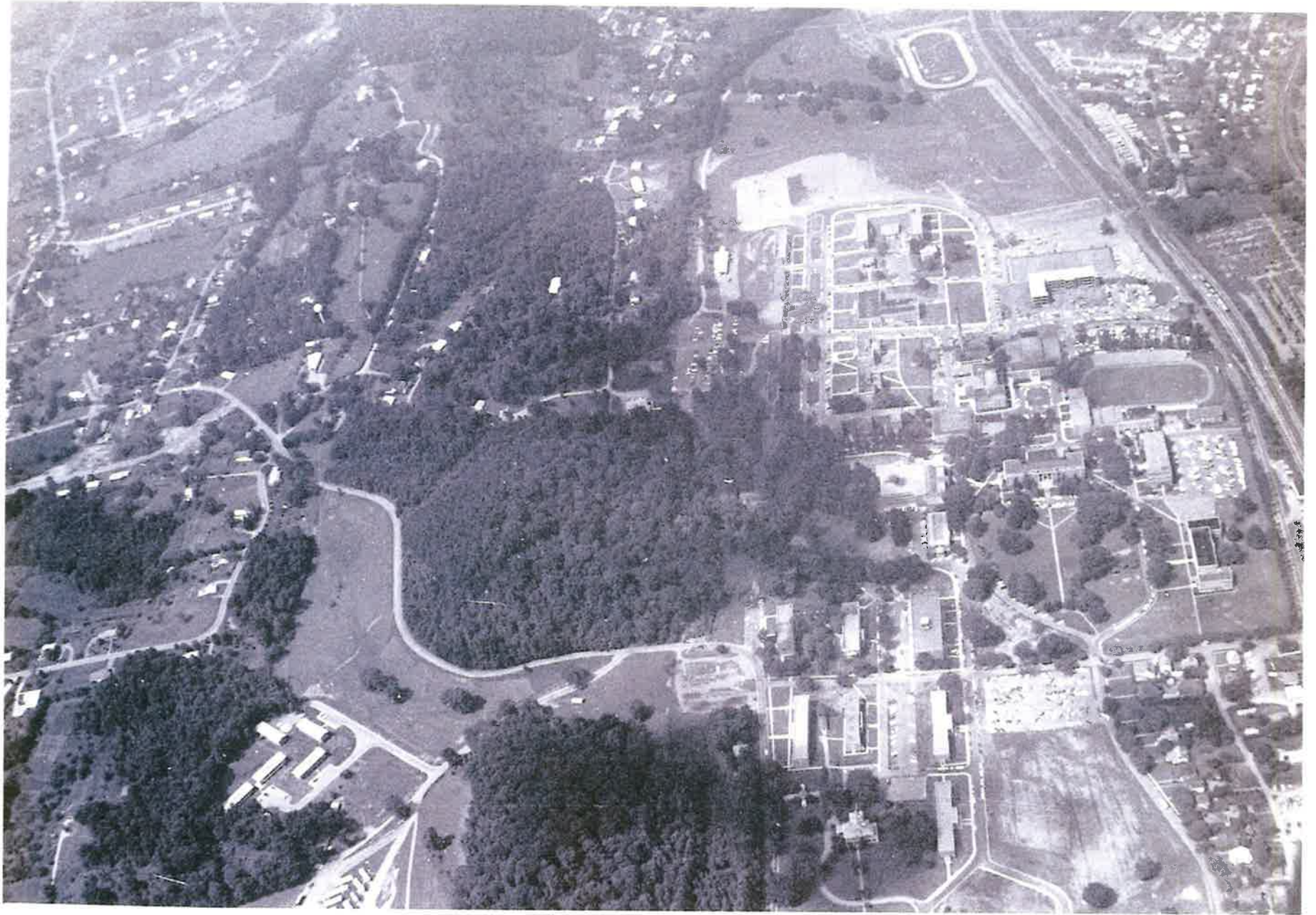
Ruka Press, Washington DC, 2011



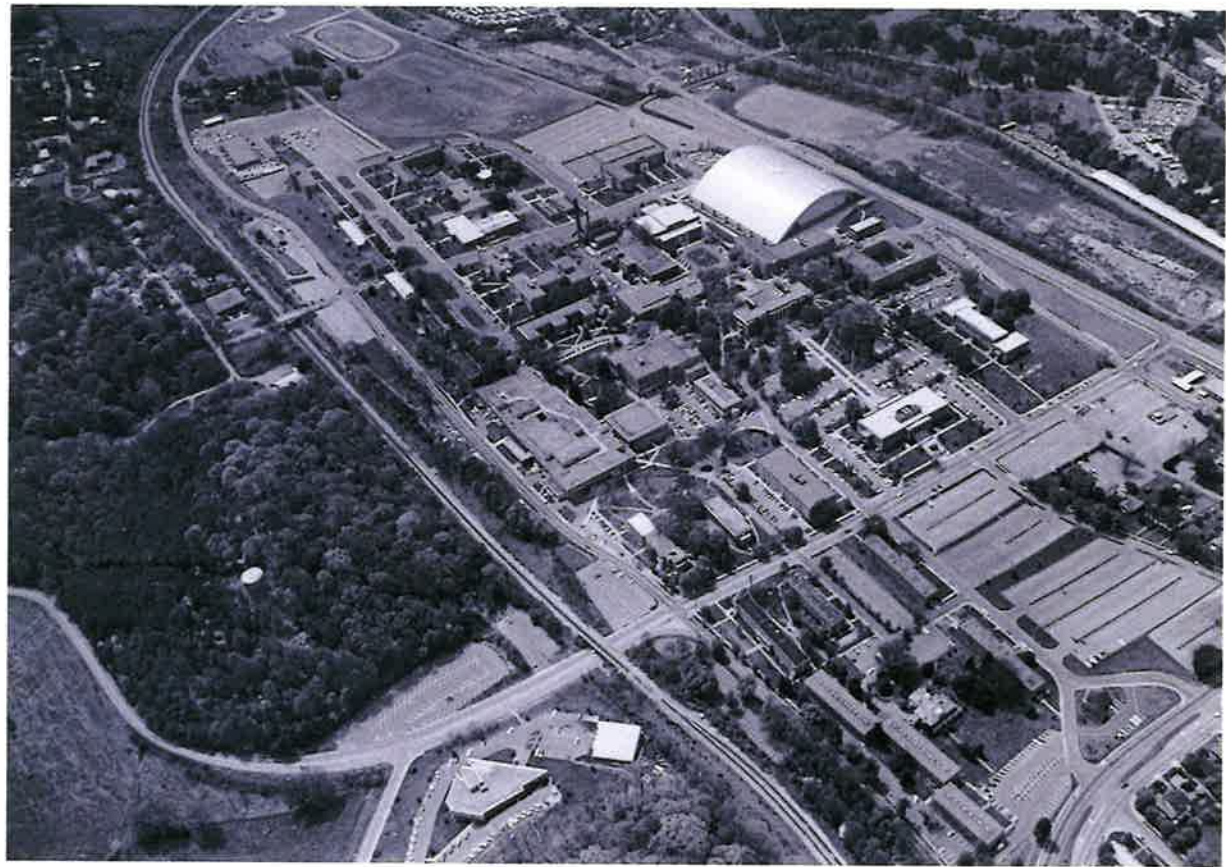


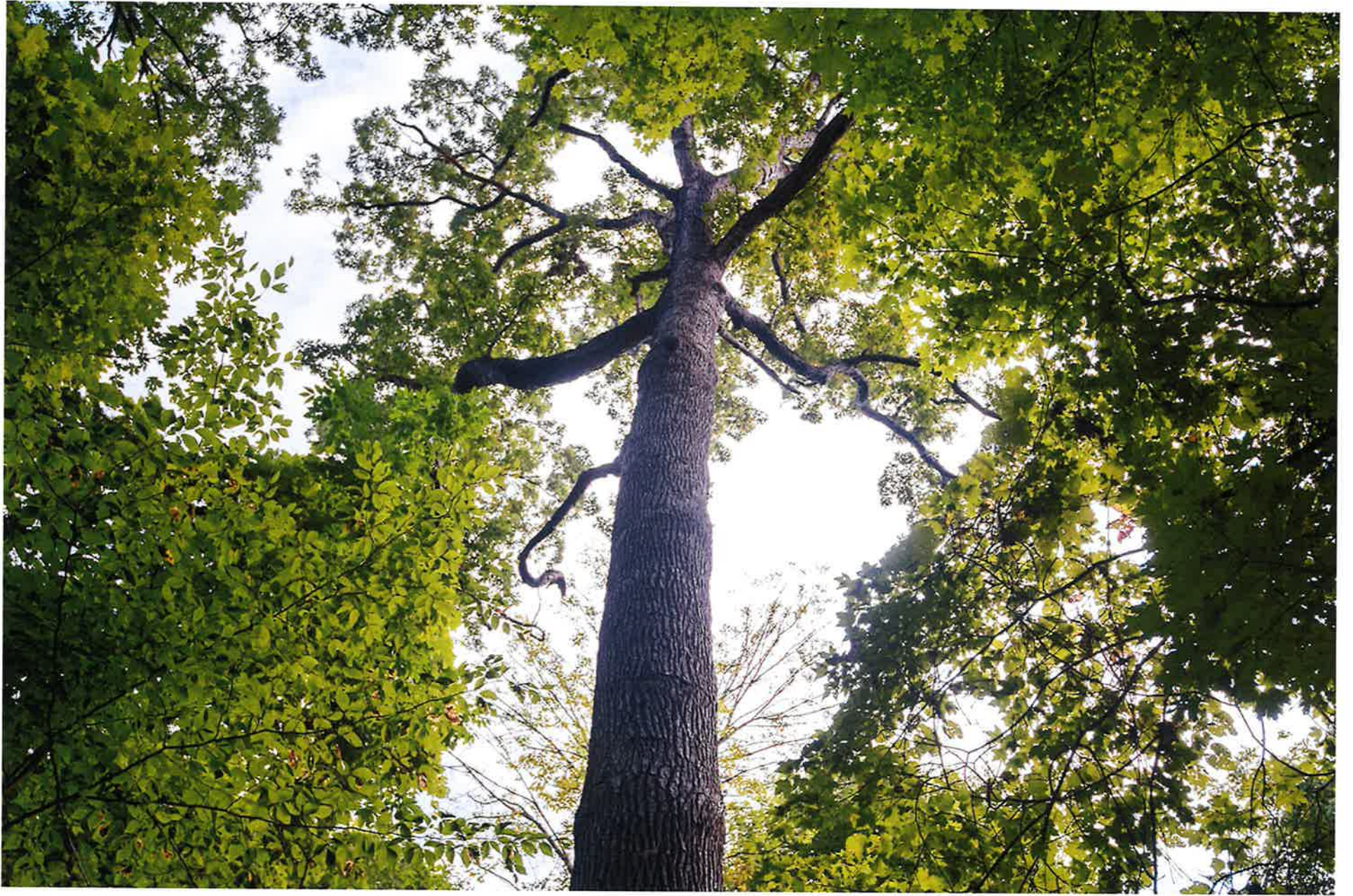
















Trees Improve Human Health

Improved air quality: Trees intercept and absorb pollutants from the air. They also help moderate the outdoor air temperature when the weather is hot.

Improved water quality: Trees filter and purify local groundwater; they reduce runoff and sedimentation, and thus also promote cleaner regional waterways.

Spiritual and psychological benefits: Numerous studies show a correlation between an experience of trees and decreased heart rates, blood pressure, and stress levels; and improved moods.

Immune system boosts: Phytoncides [fi - TAHN - sides] -- airborne chemicals that plants give off to protect themselves from insects -- have antibacterial and antifungal qualities which help plants fight disease. When people breathe in these chemicals, our bodies respond by increasing the number and activity of a type of white blood cell.

Recreation – Hiking and Mountain Biking On Campus



Proposal -- to recognize and preserve
University Woods for its aesthetic,
ecological, recreational, and human health
values:

1. A memorandum of agreement between ETSU and the Old Growth Forest Network.
2. A statement in ETSU's master plan.
3. A dedication ceremony.

Ad hoc Committee to Propose a Protected Status for University Woods (convened May '18)

- Fred Alsop, Professor, Dept of Biological Sciences
- Tim McDowell, Professor Emeritus, Dept of Biological Sciences; co-founder and Director of ETSU Arboretum
- Kathleen Moore, Director of Sustainability & Recycling; Chair of the Sustainability Fee Committee
- Dave Mueller, Assistant Director of Outdoor Adventure, Campus Recreation
- Kevin O'Donnell, committee chair; Professor of English, Dept of Lit and Language, and Director of the Environmental Studies minor
- Brian Rowe, Professor, Biomedical Sciences