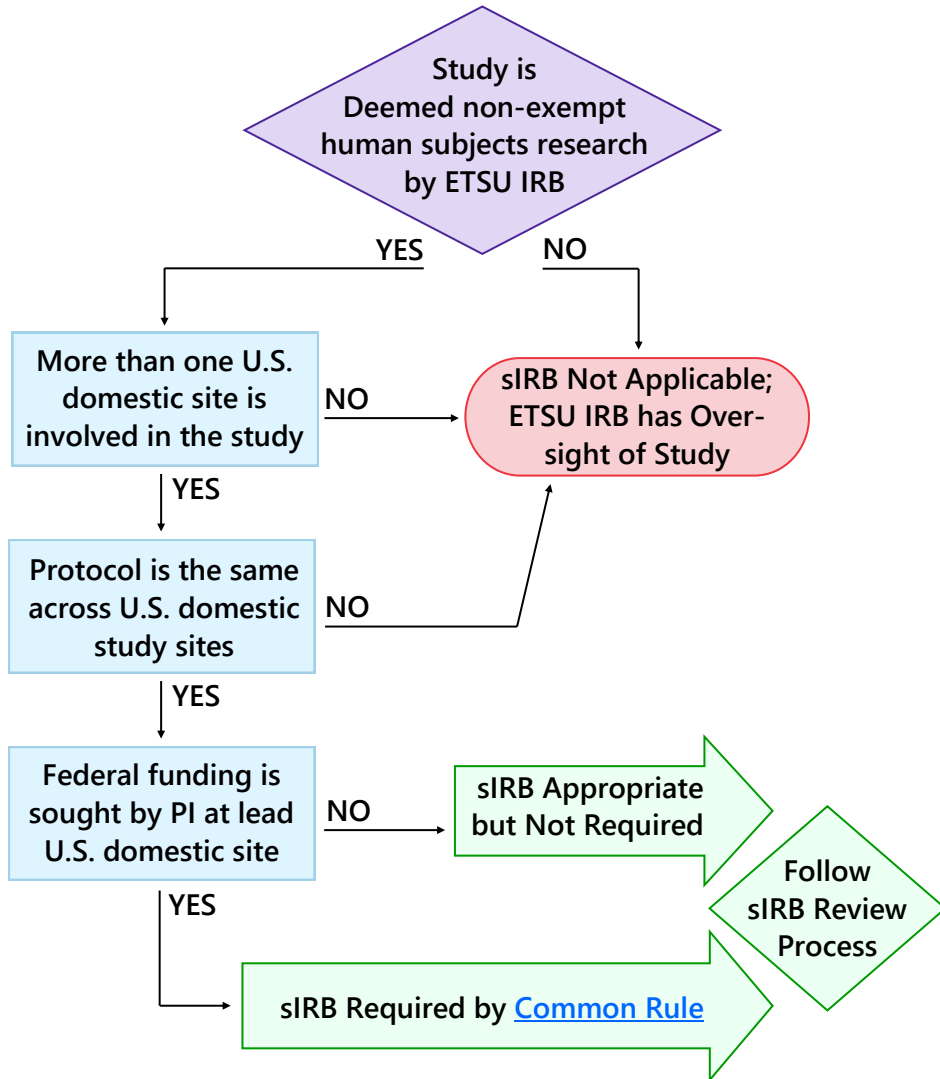
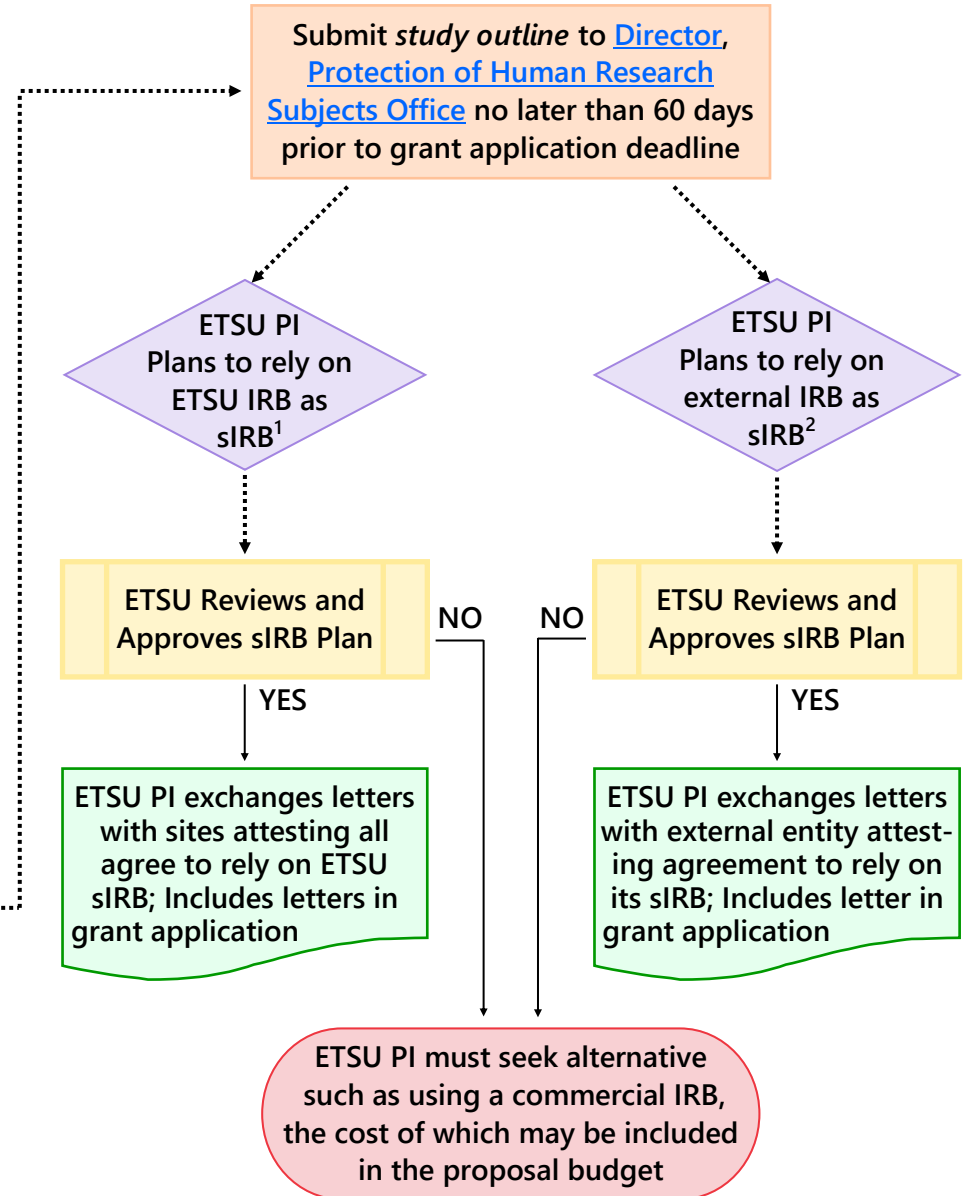


DOES MY PROPOSED STUDY REQUIRE A SINGLE IRB?

STEP I: Is a Single IRB Required or Appropriate for the Proposed Study?



STEP II: ETSU Single IRB Review & Approval Process



¹ Example: ETSU is lead institution and Prime awardee if study is funded

² Example lead institution is external entity and ETSU will be Subawardee if study is funded