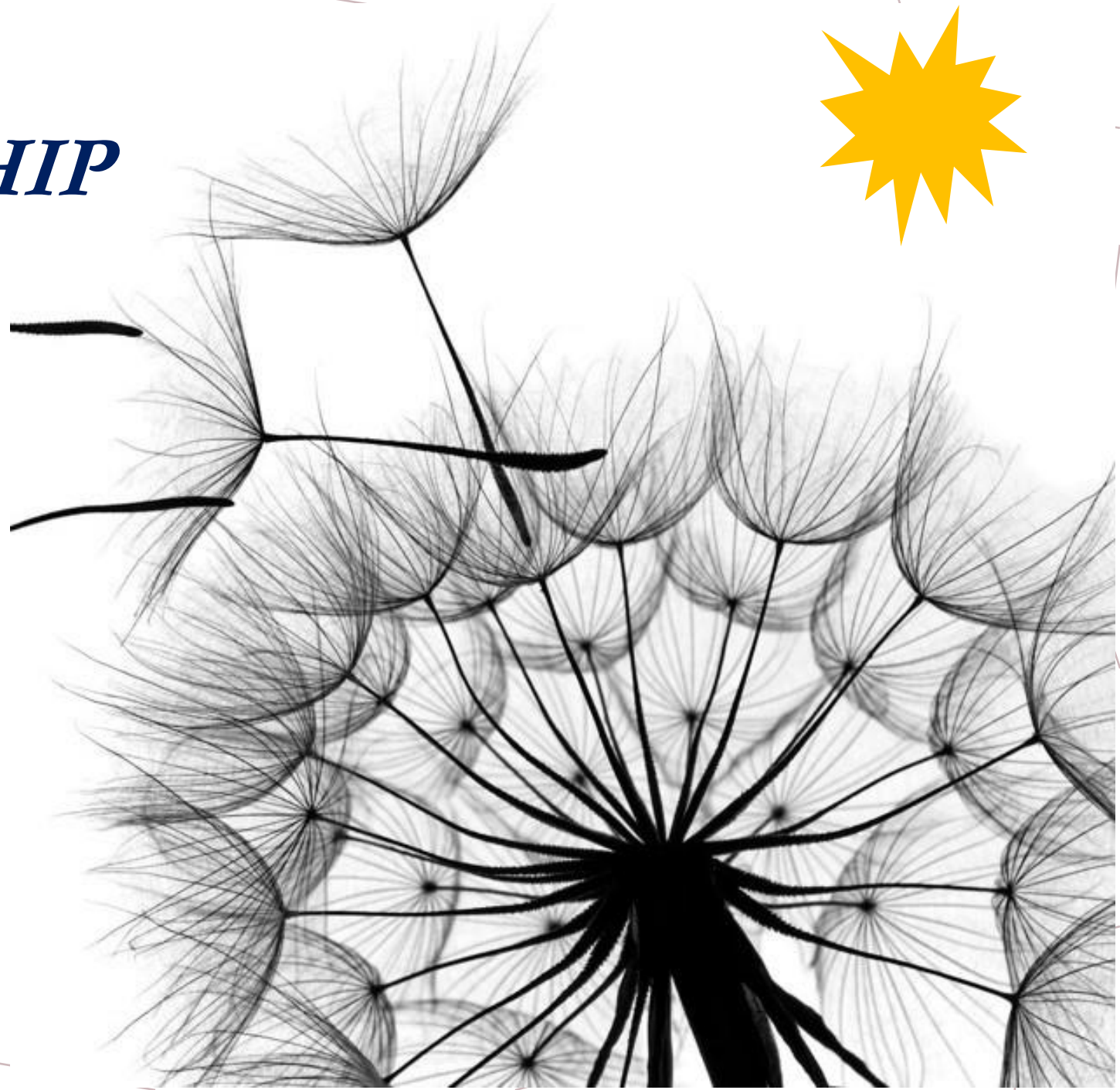


ETSU STEWARDSHIP OF PLACE

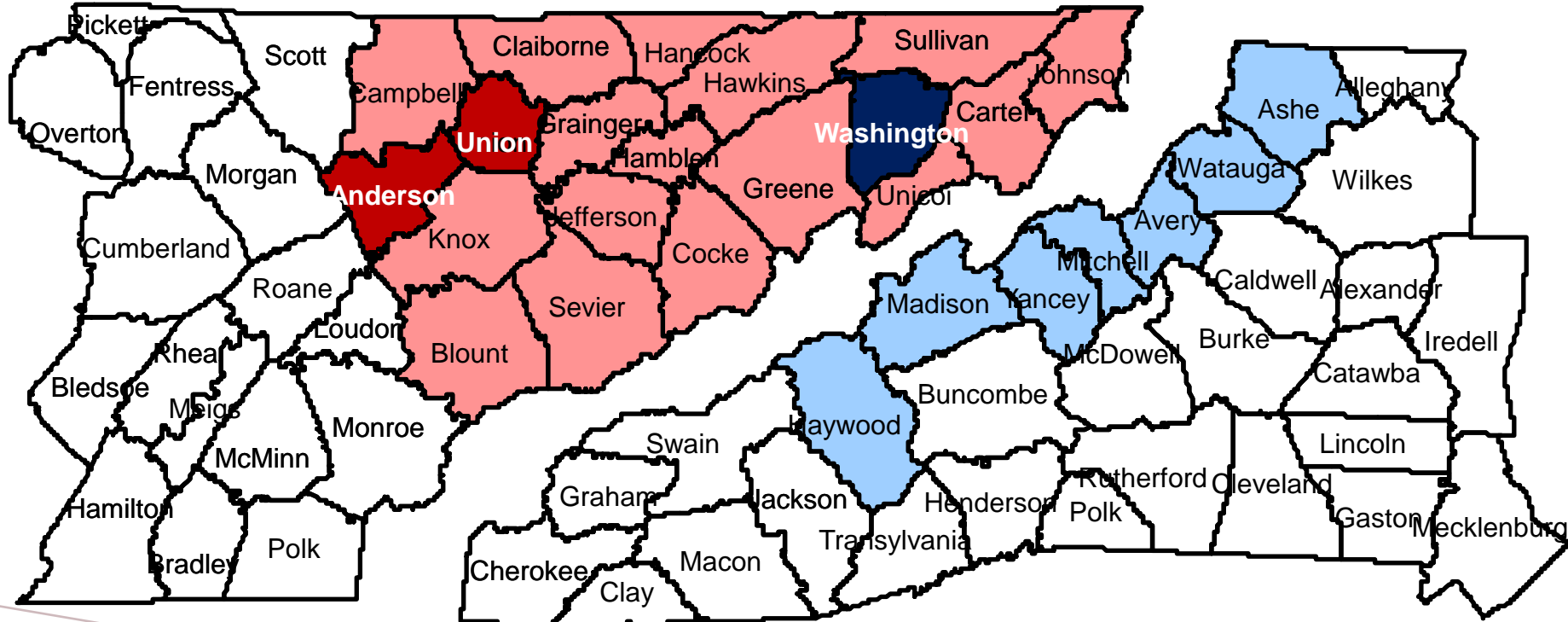
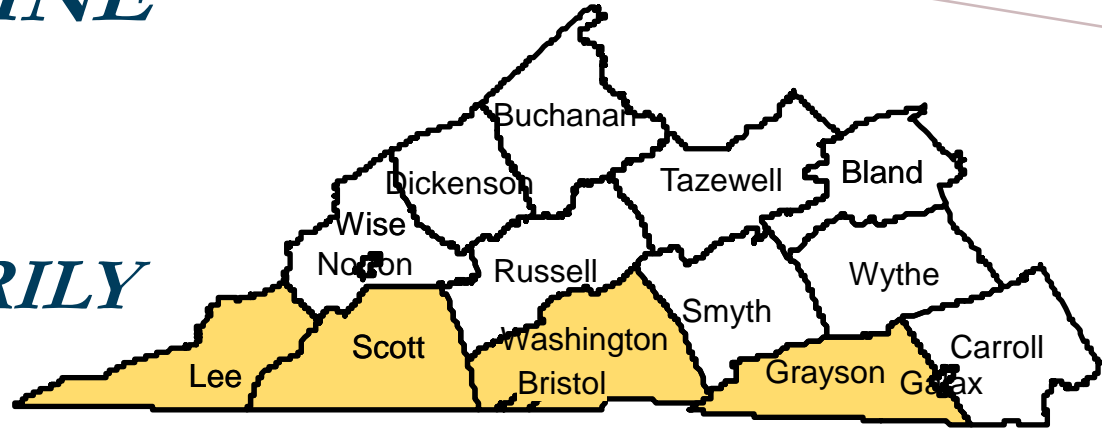
SPOTLIGHT ON
ANDERSON AND UNION
COUNTIES

May 2021



THE EDUCATION PIPELINE LEADING TO ETSU

REGION-COUNTIES PRIMARILY SERVED



First-Time Freshmen – 68%

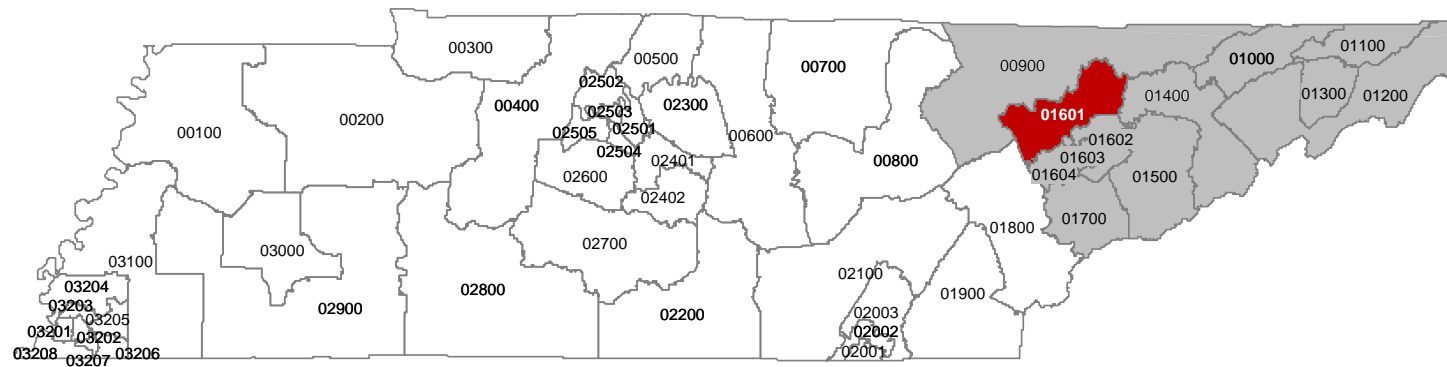
All Undergraduates – 74%



Combined Public Use Microdata Areas (PUMAs) for ETSU Region

Lowest Unit of Analysis for Most U.S. Census Bureau Data

PUMA	County and City
900	Campbell, Claiborne, Scott, Morgan & Hancock Counties
1000	Hawkins & Sullivan (Northwest) Counties--Kingsport City
1100	Sullivan County (Southeast)--Bristol City
1200	Greene, Carter, Unicoi & Johnson Counties
1300	Washington County--Johnson City
1400	Hamblen, Cocke & Grainger Counties
1500	Sevier & Jefferson Counties
1601	Anderson, Union & Knox (North) Counties--Oak Ridge (East) & Clinton Cities
1602	Knox County (East)
1603	Knoxville City
1604	Knox County (West)--Farragut Town
1700	Blount County

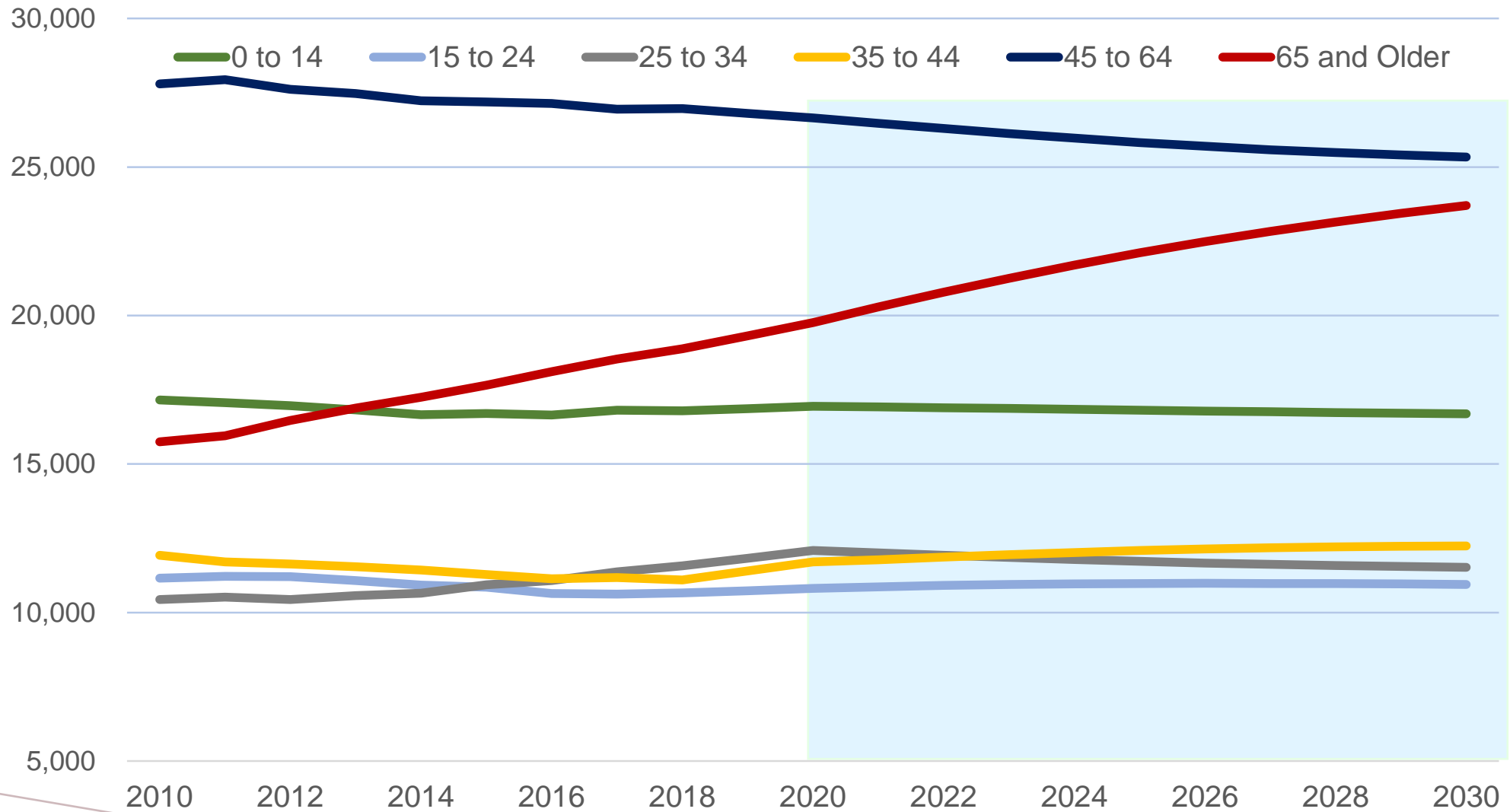


POPULATION

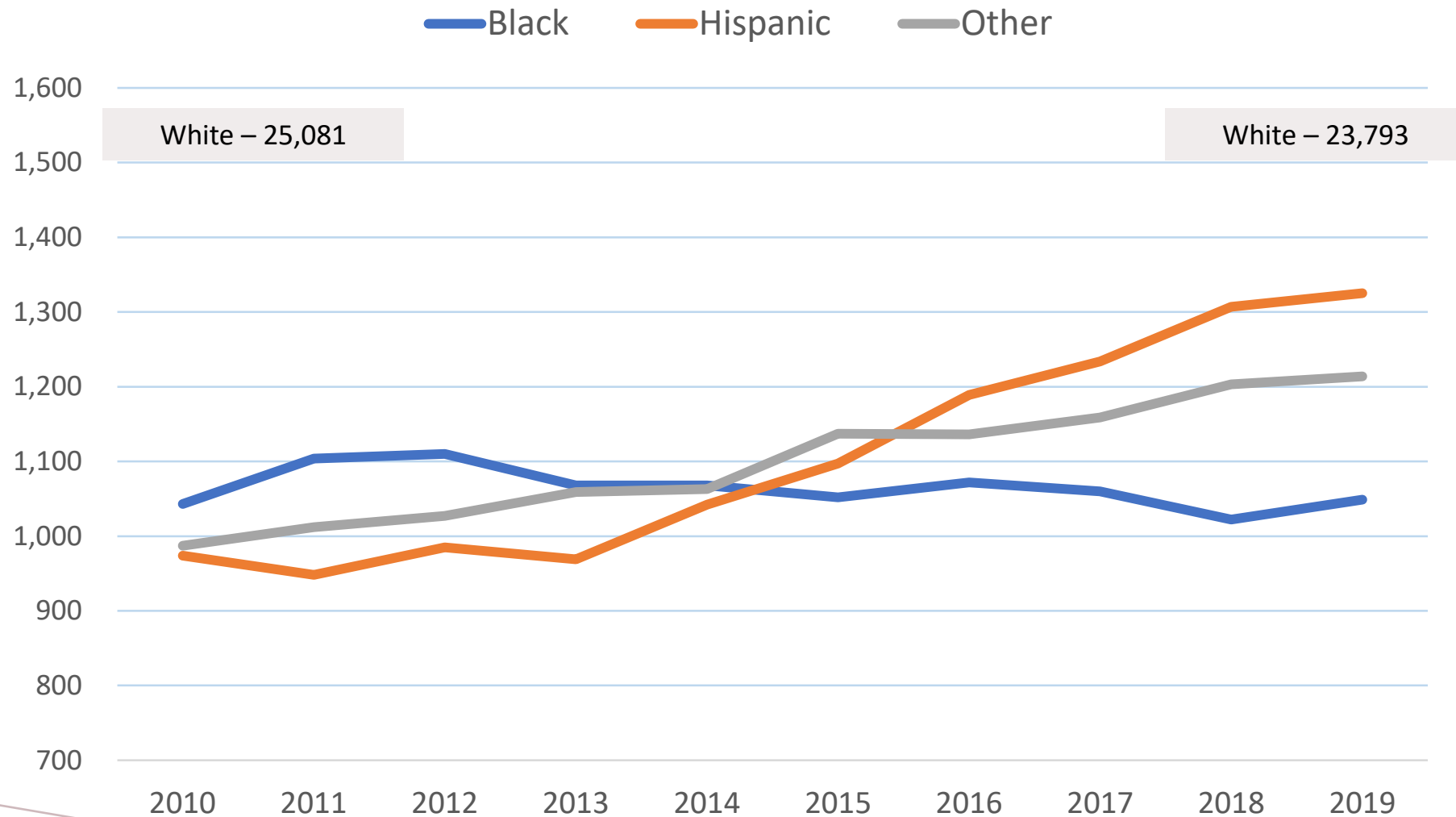


POPULATION CHANGE BY AGE-GROUP

ANDERSON AND UNION COUNTIES 2010 TO 2030



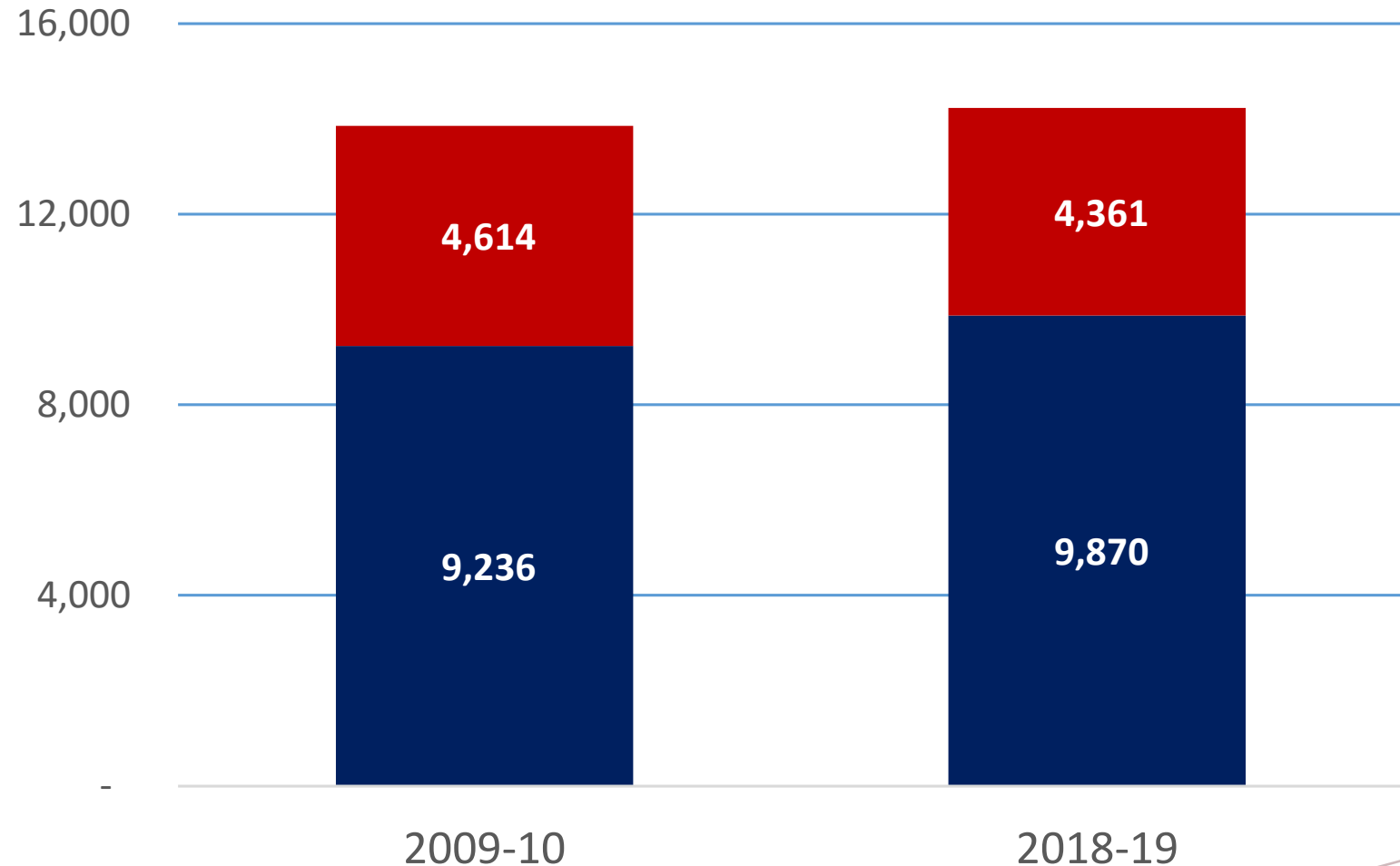
POPULATION ESTIMATES OF MINORITIES – AGE 0 TO 24 ANDERSON AND UNION COUNTIES (2010 TO 2019)



CHANGE IN K-12 ENROLLMENT

■ Grades 1-8 Students ■ Grades 9-12 Students

ANDERSON AND UNION COUNTIES

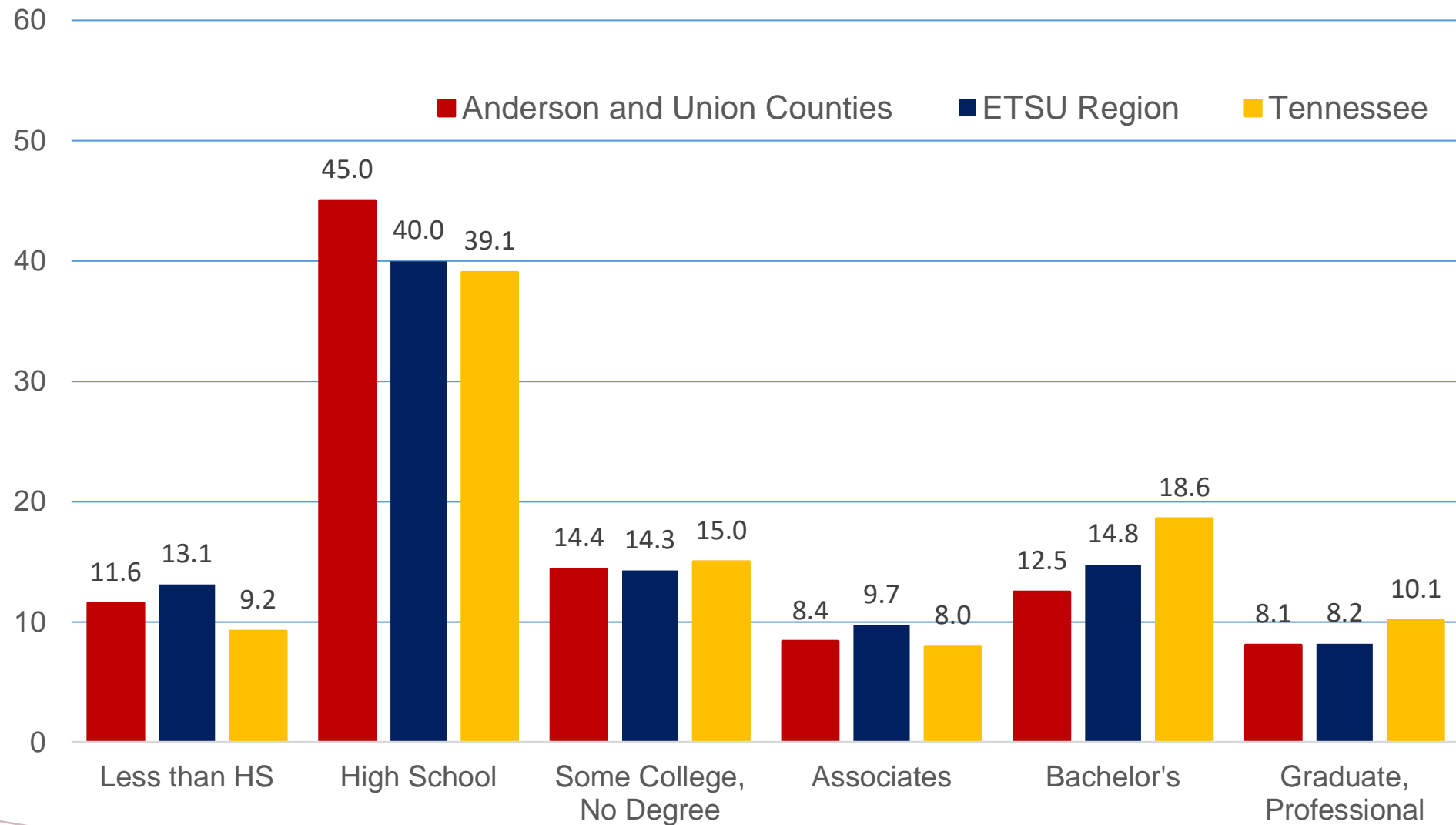


EDUCATION



EDUCATIONAL ATTAINMENT OF 25 TO 64 YEAR OLD'S

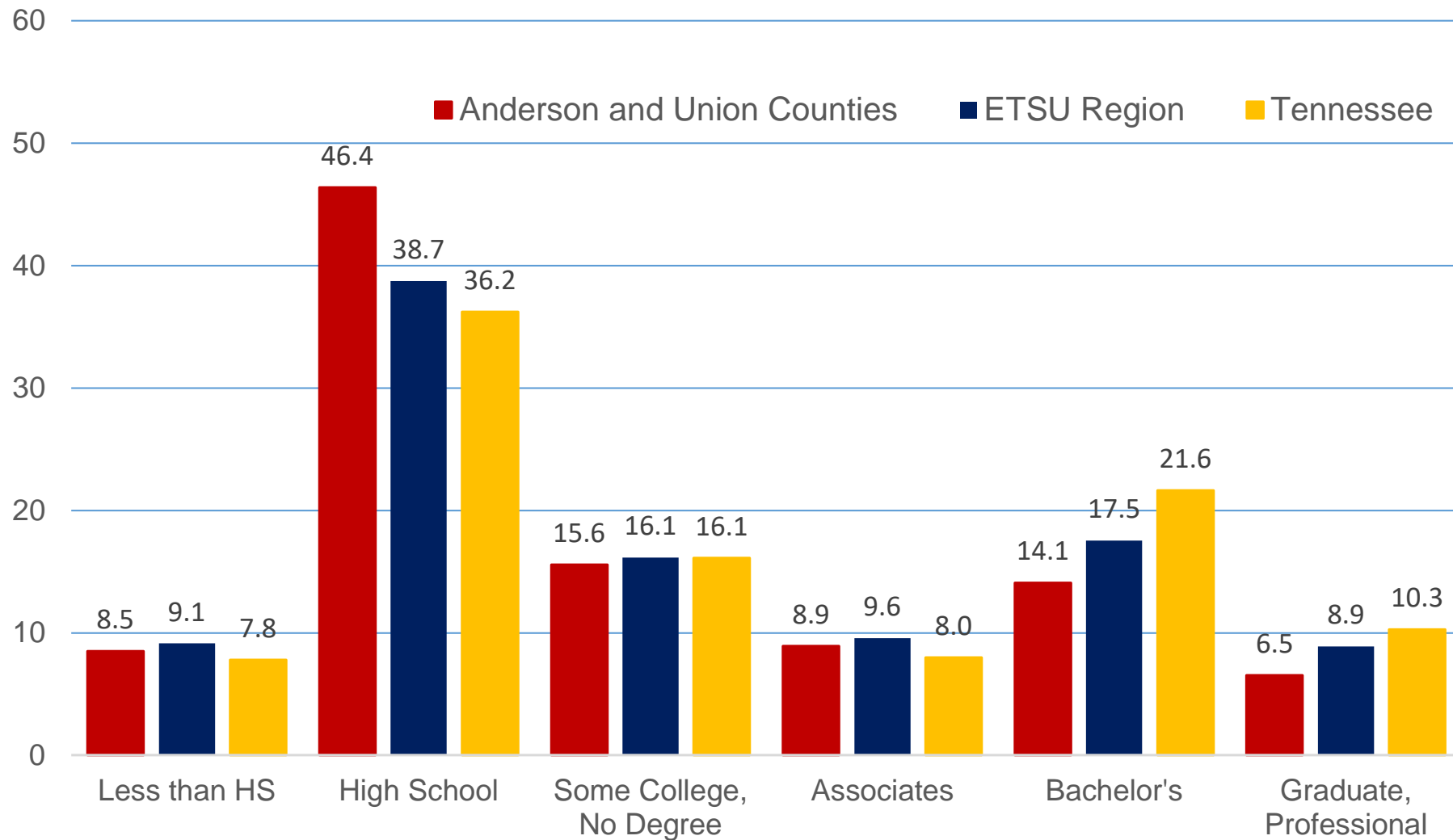
ANDERSON AND UNION COUNTIES, ETSU REGION, TN (2019)



Source: U.S. Census Bureau, American Community Survey Public Use Microdata Samples



EDUCATIONAL ATTAINMENT OF 25 TO 39 YEAR OLD'S ANDERSON AND UNION COUNTIES, ETSU REGION, TN (2019)

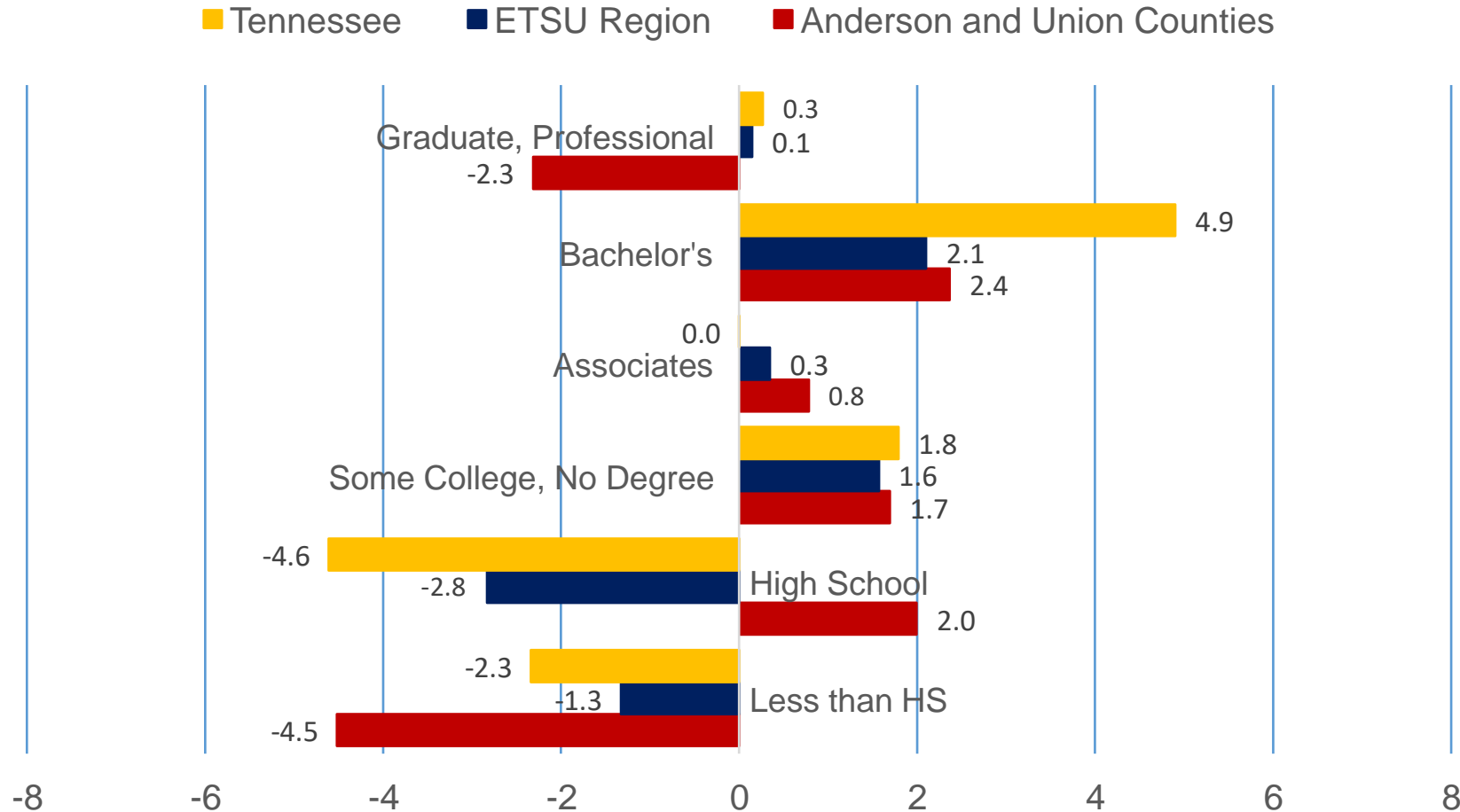


Source: U.S. Census Bureau, American Community Survey Public Use Microdata Samples

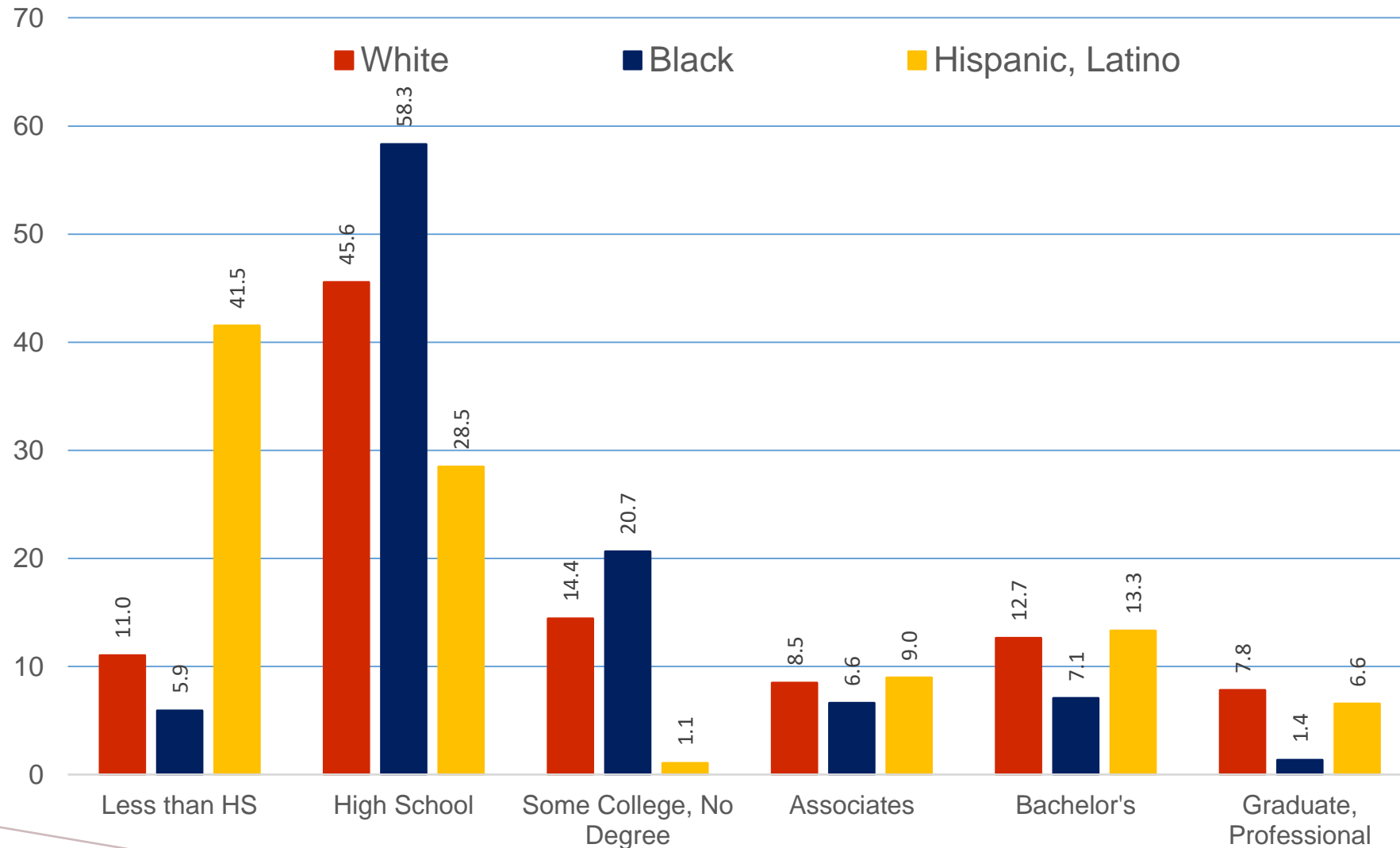


PERCENTAGE CHANGE IN EDUCATIONAL ATTAINMENT FROM YOUNG (AGED 25 TO 39) TO OLDER (40 TO 64)

ANDERSON AND UNION COUNTIES, ETSU REGION, TN (2019)



EDUCATIONAL ATTAINMENT OF 25 TO 64 YEAR OLD'S BY RACE/ETHNICITY – ANDERSON AND UNION COUNTIES (2019)



Source: U.S. Census Bureau, American Community Survey Public Use Microdata Samples

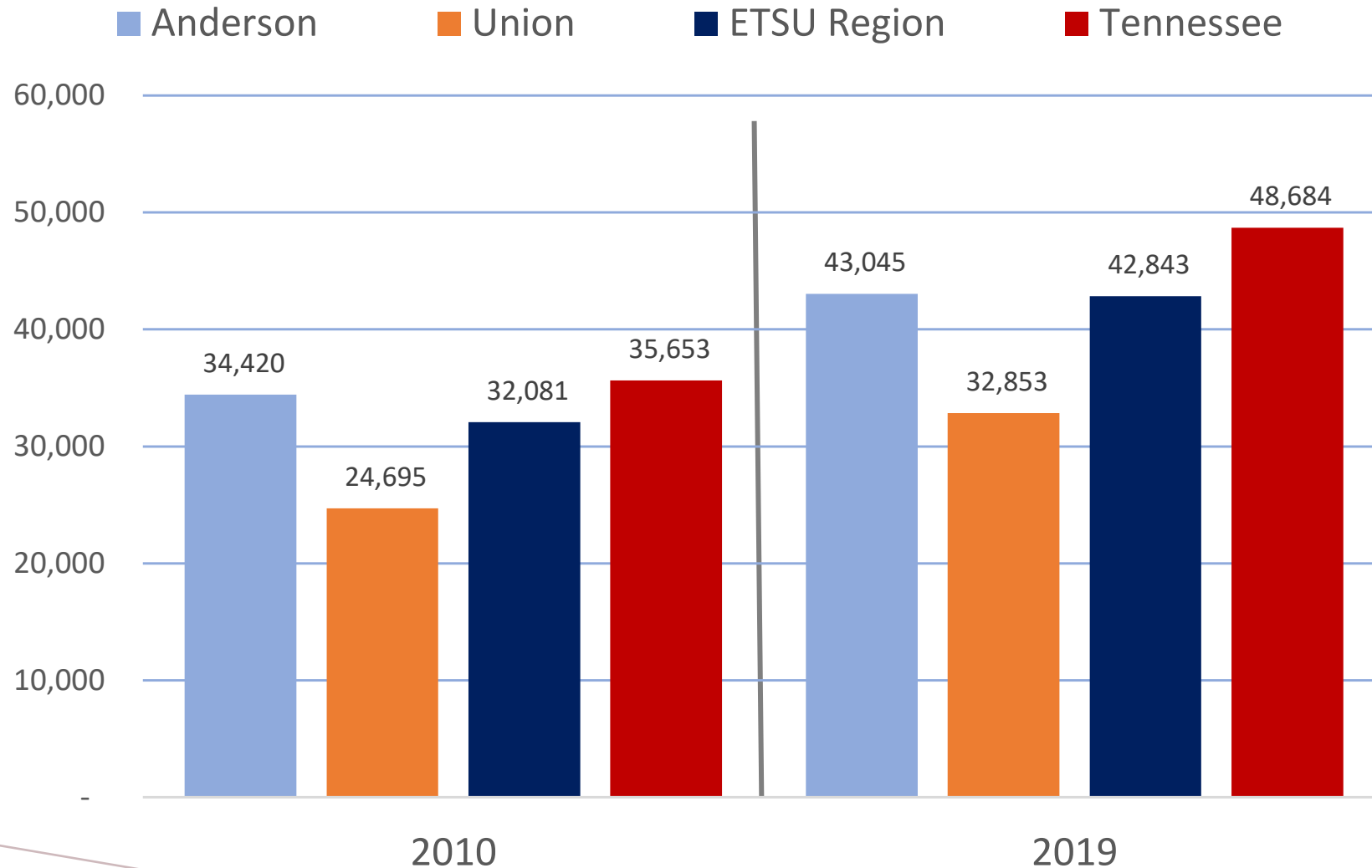


EMPLOYMENT AND WORKFORCE



PERSONAL INCOME PER CAPITA

ANDERSON AND UNION COUNTIES ETSU REGION, TN

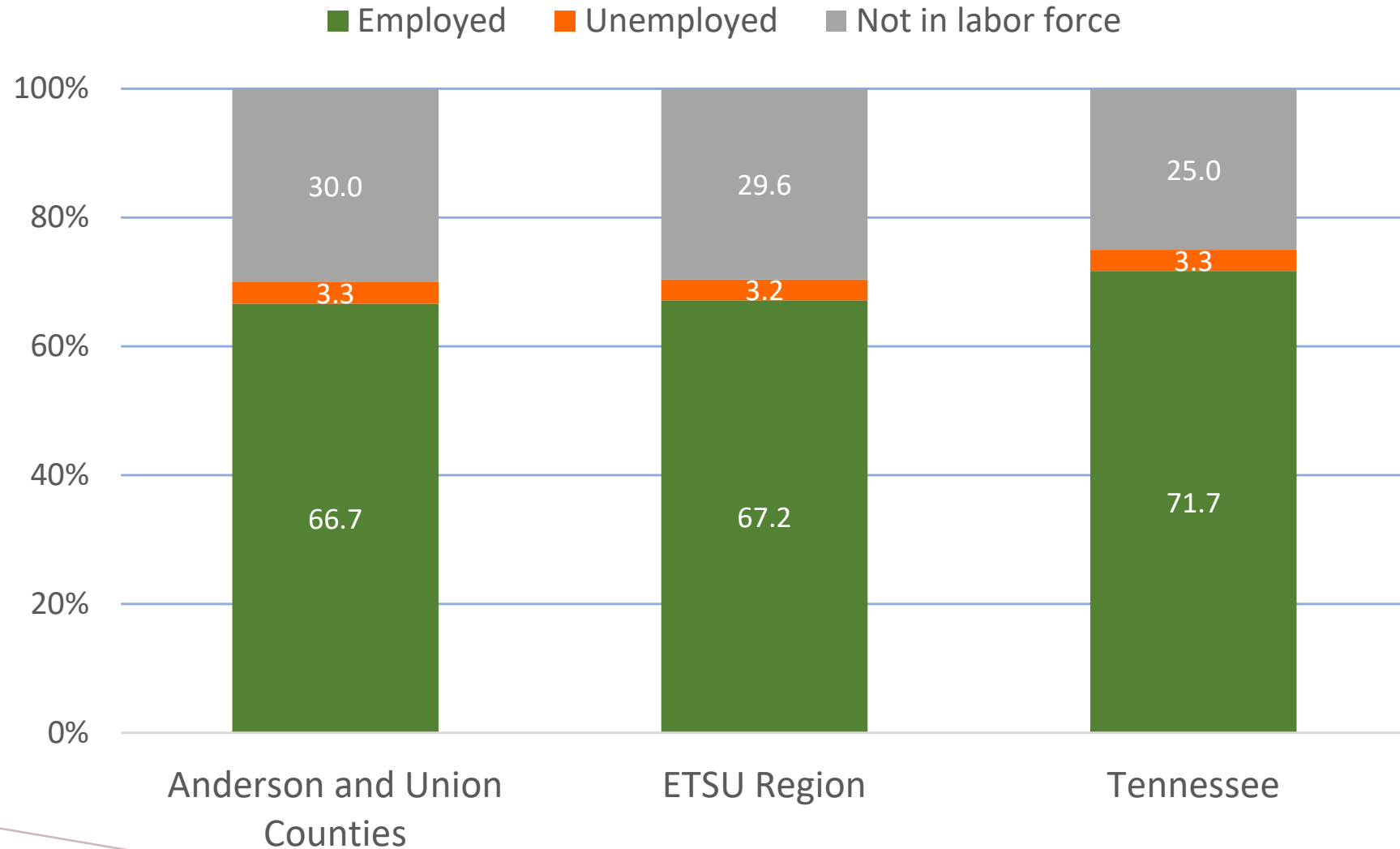


Source: U.S. Bureau of Economic Analysis



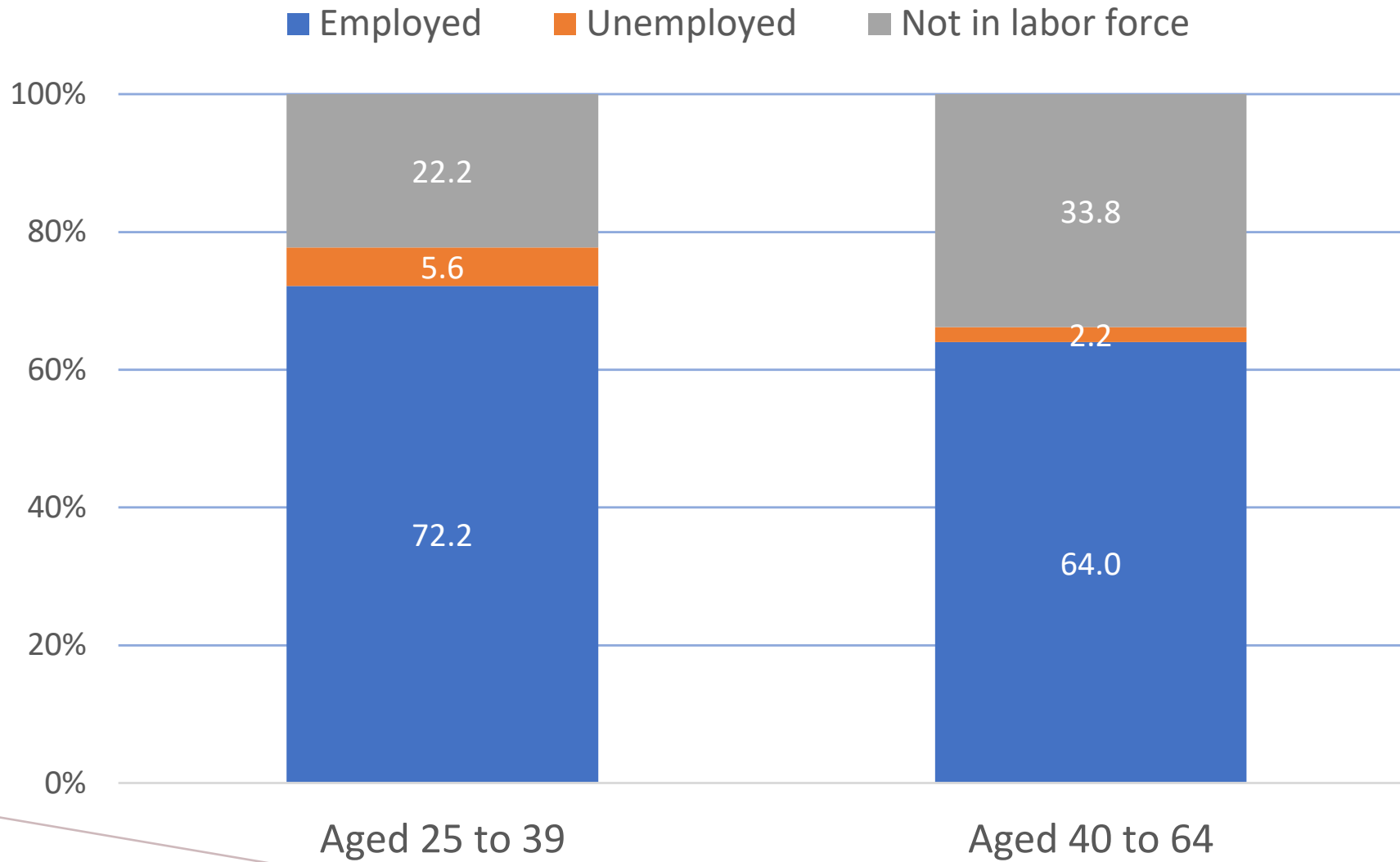
EMPLOYMENT STATUS (2019)

ANDERSON AND UNION COUNTIES, ETSU REGION, TN

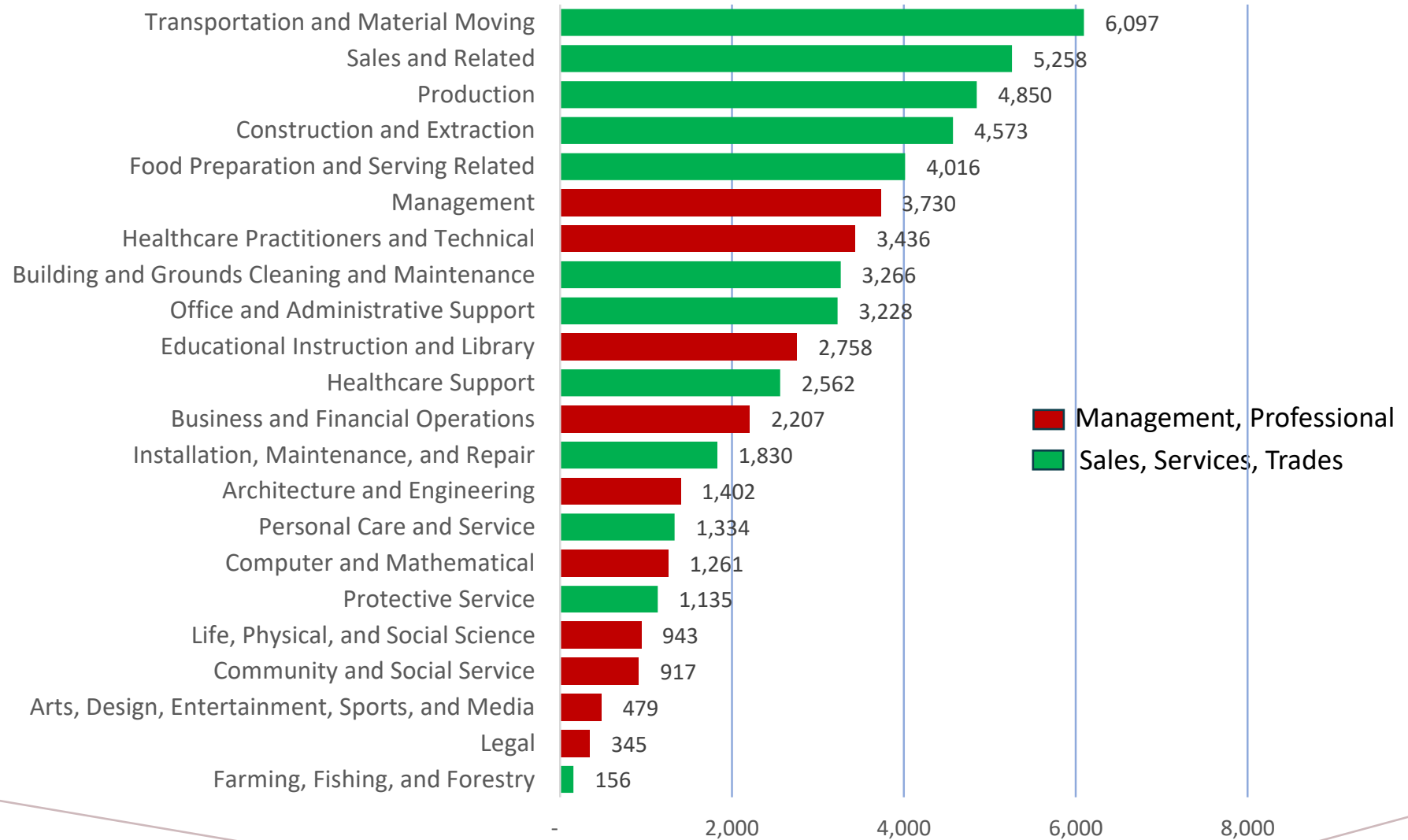


EMPLOYMENT STATUS BY AGE-GROUP (2019)

ANDERSON AND UNION COUNTIES



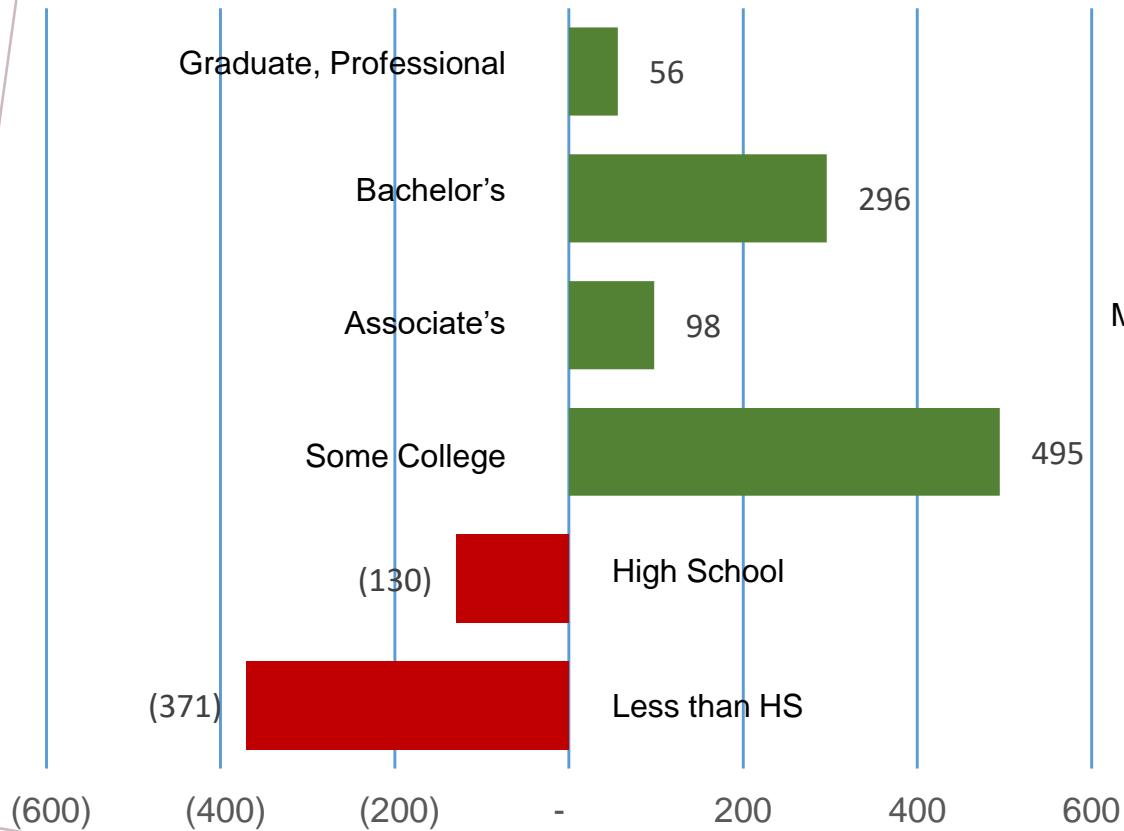
OCCUPATIONS OF 25 TO 64 YEAR OLD'S ANDERSON AND UNION COUNTIES (2019)



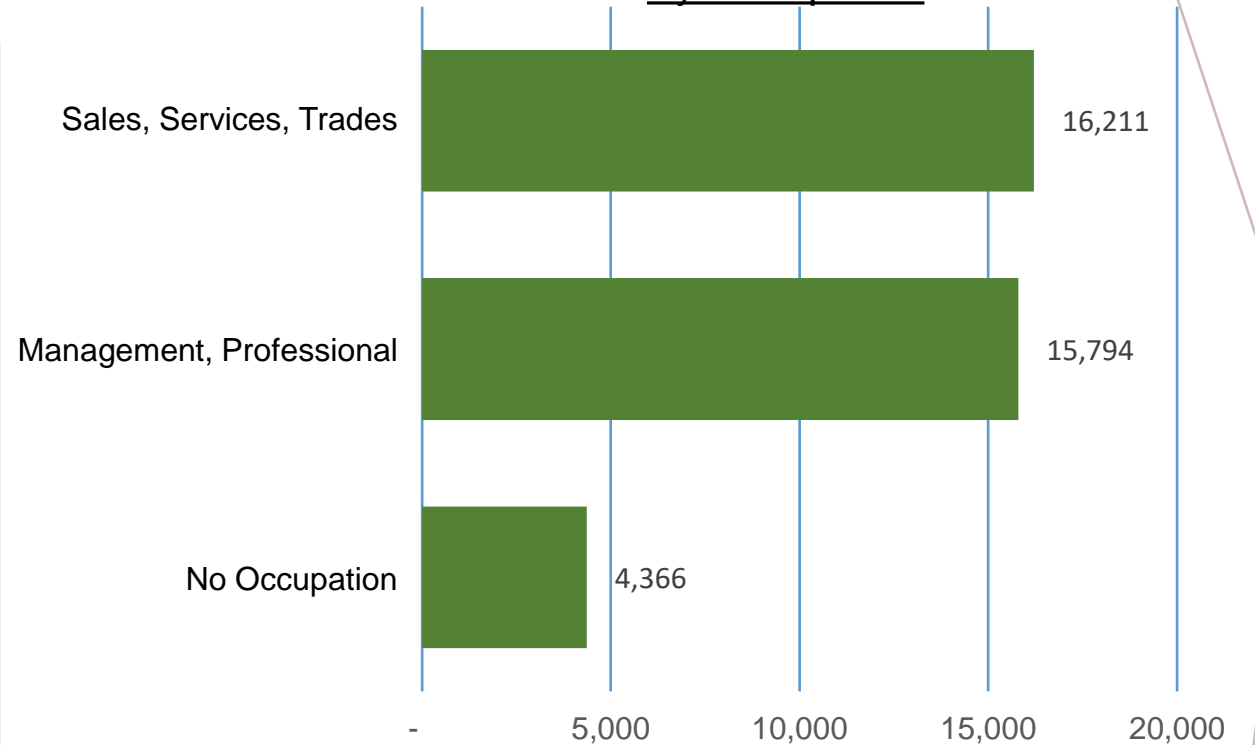
ANNUAL NET MIGRATION OF 25 TO 64 YEAR OLDS

KNOX, ANDERSON, AND UNION COUNTIES (2015-2019)

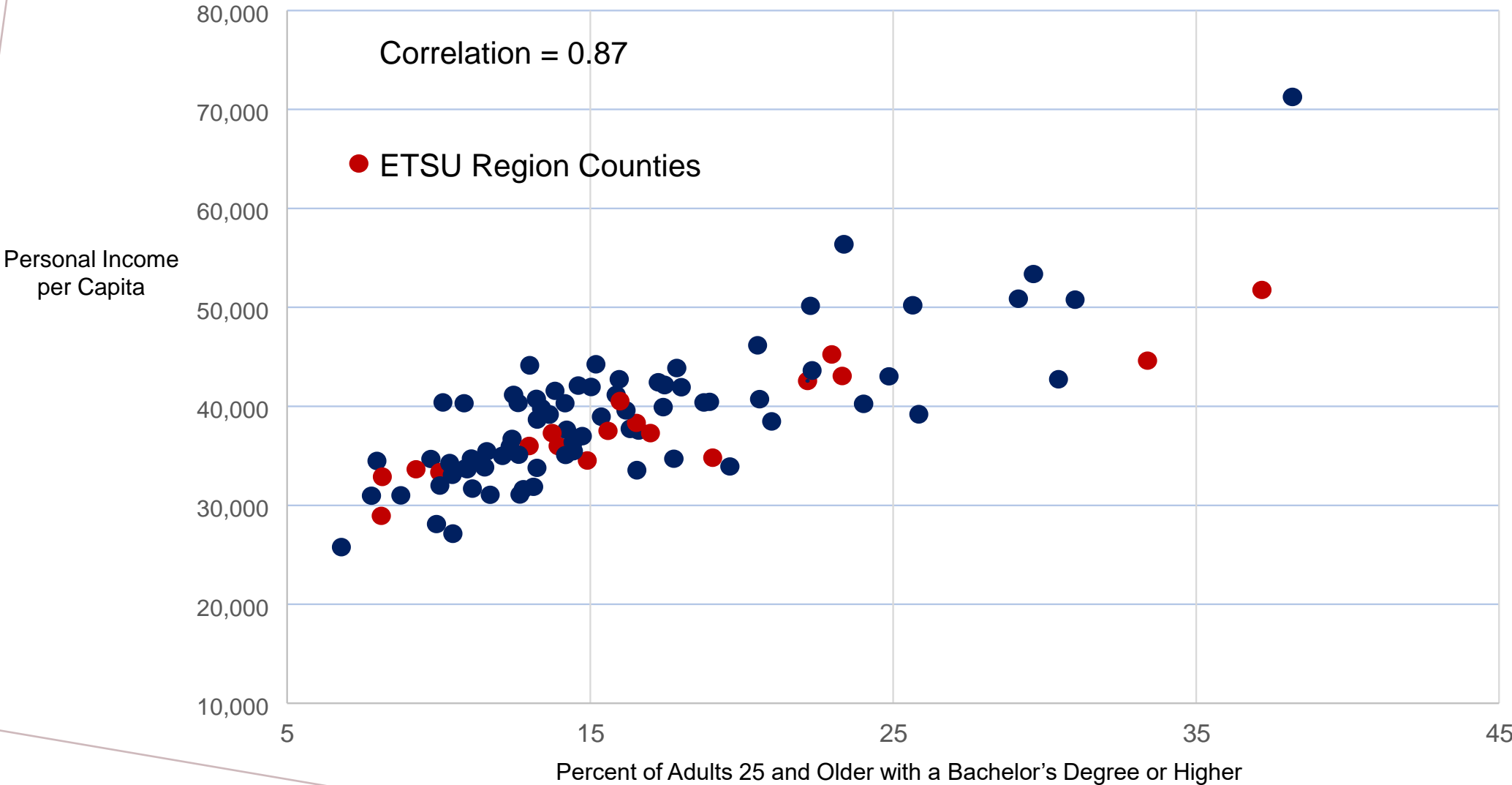
By Level of Education



By Occupation



RELATIONSHIP BETWEEN COLLEGE ATTAINMENT AND PERSONAL INCOME – TN COUNTIES (2019)



Source: U.S. Bureau of Economic Analysis, U.S. Census Bureau – American Community Survey

