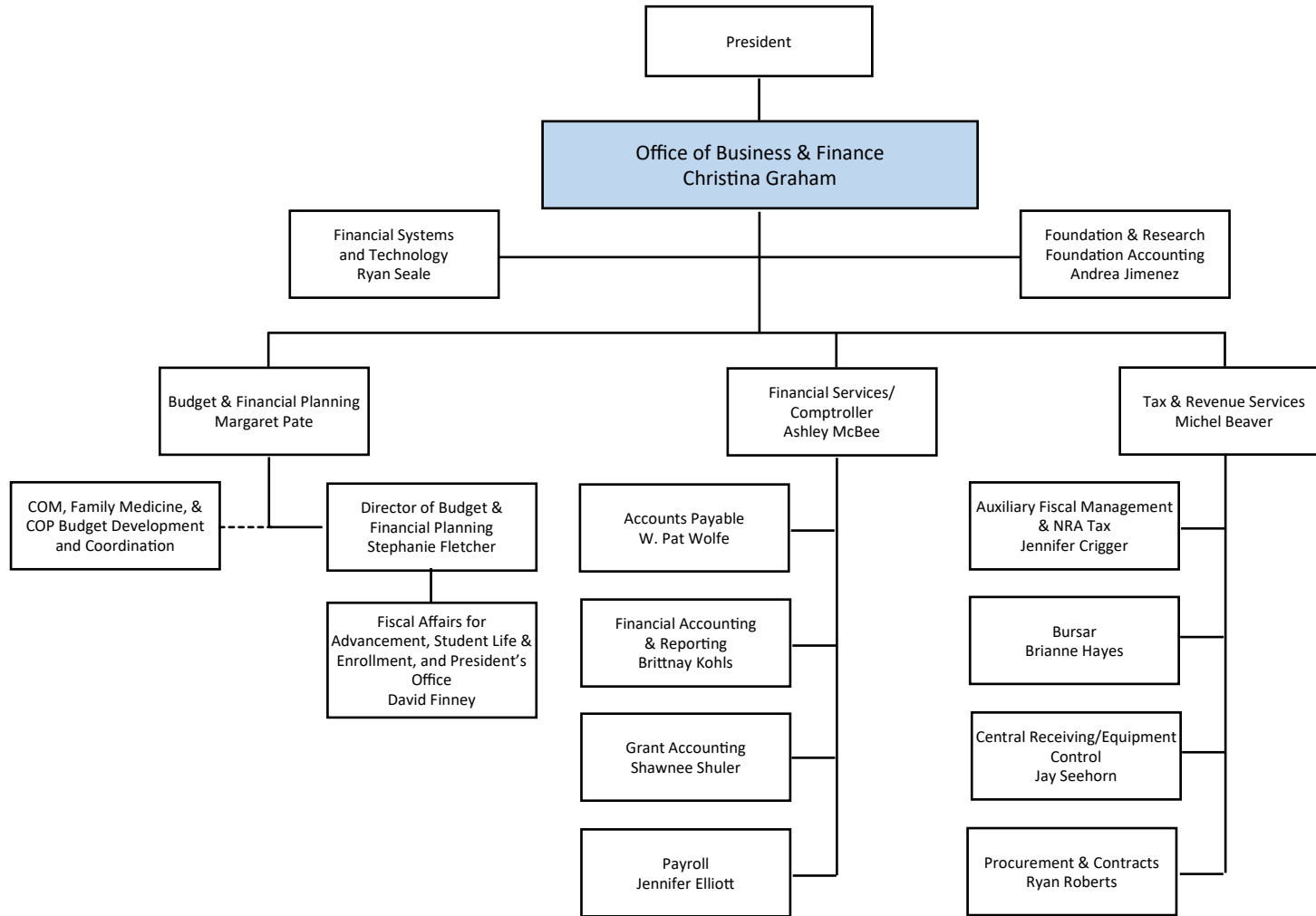
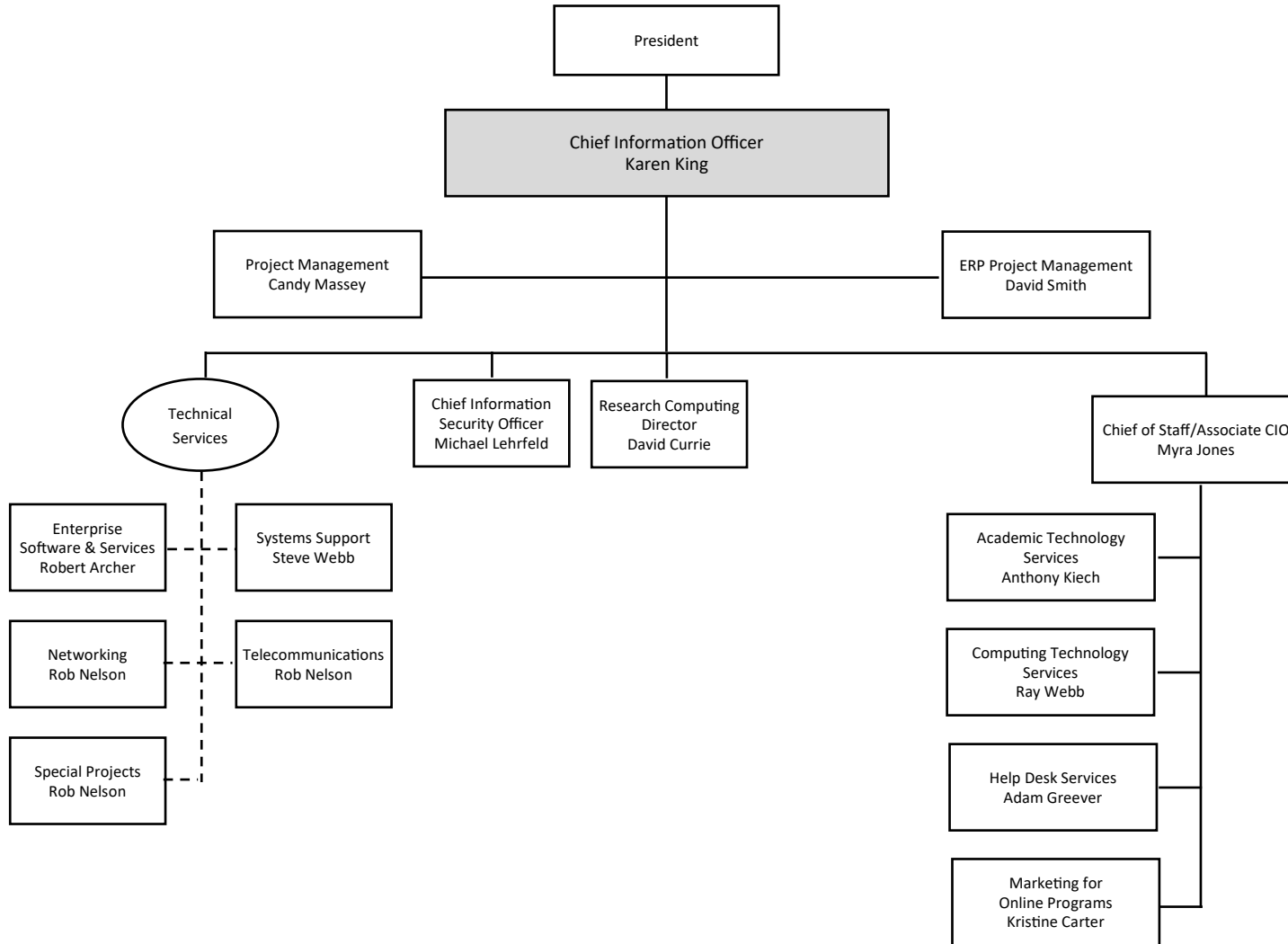
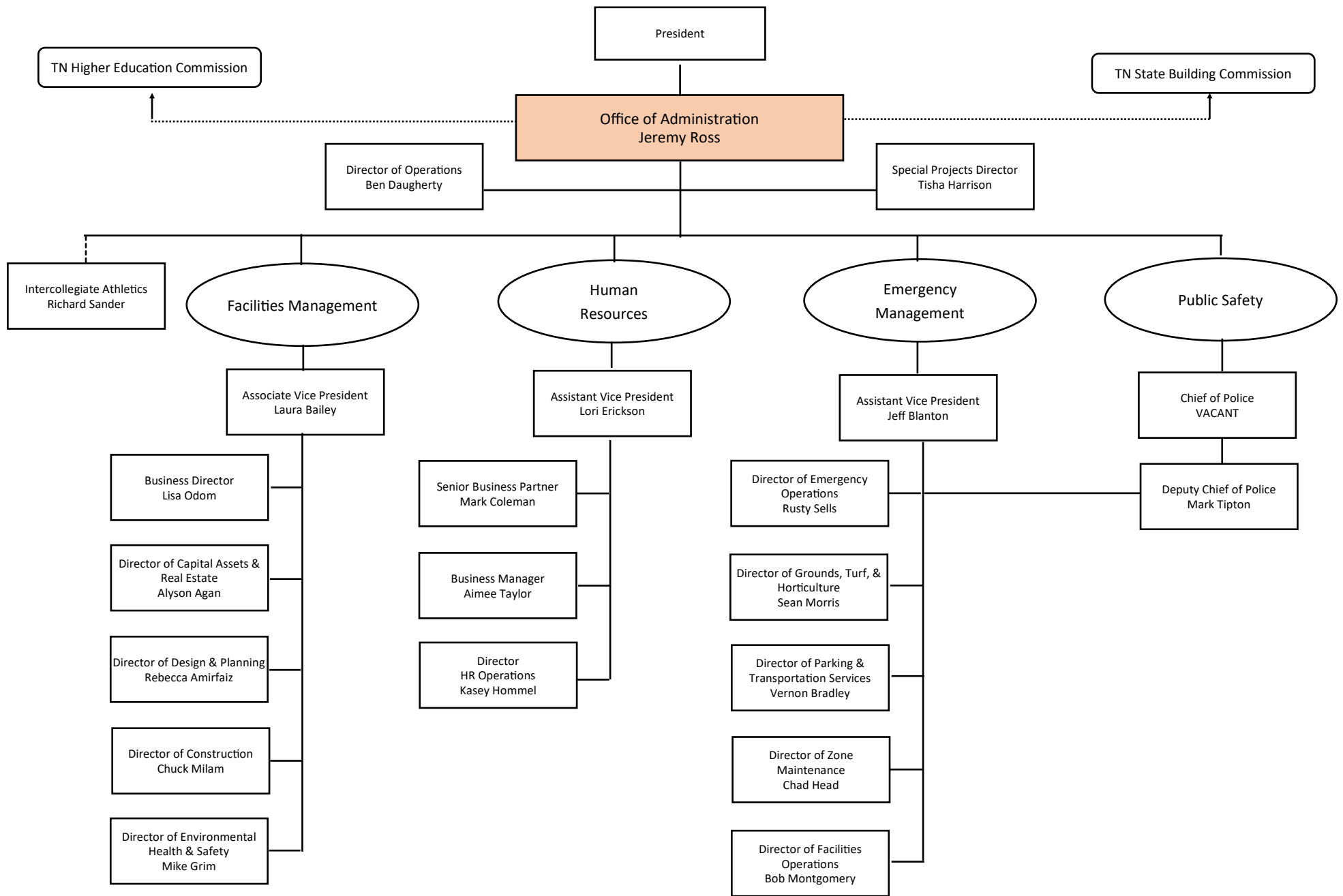
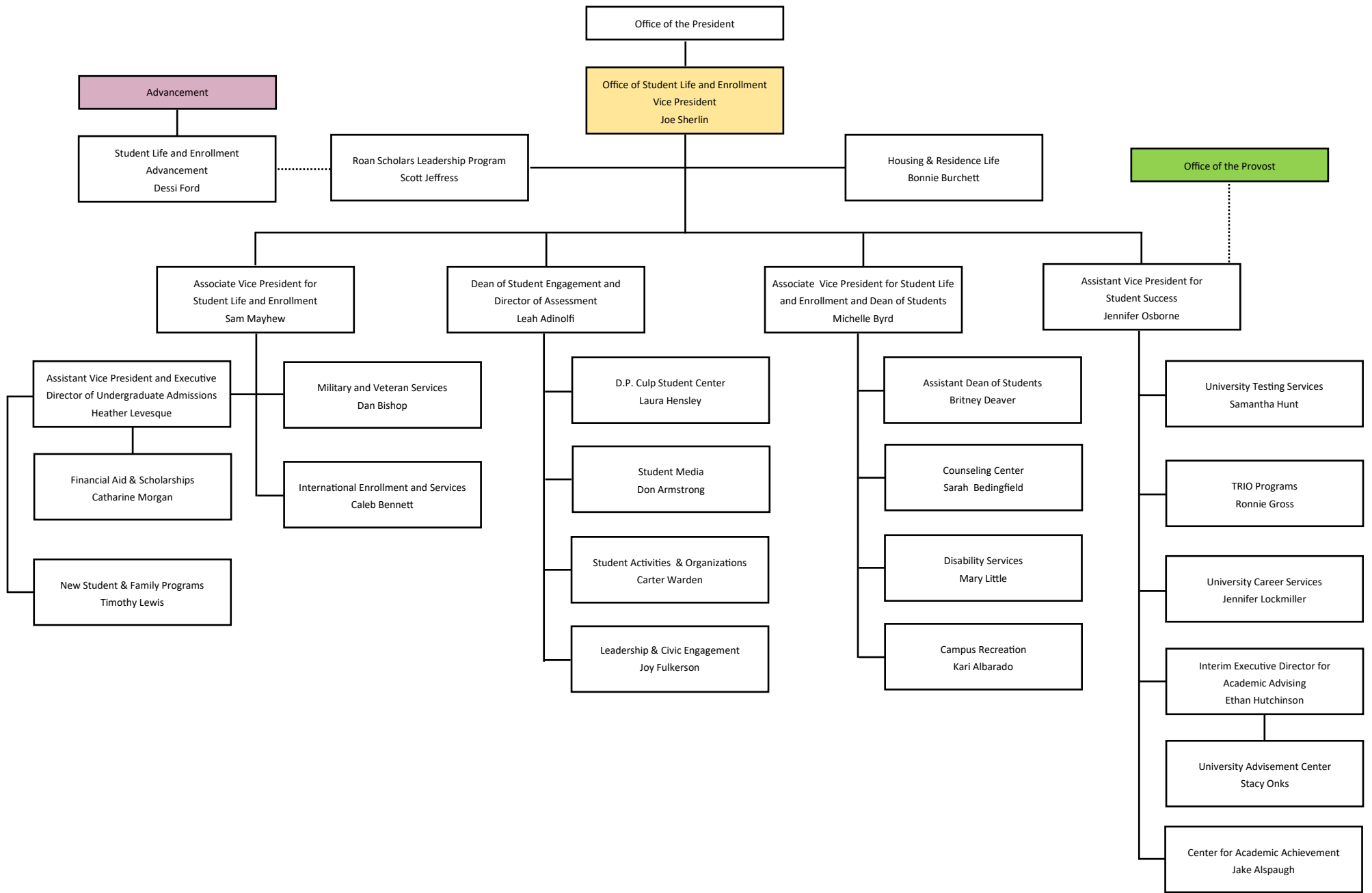


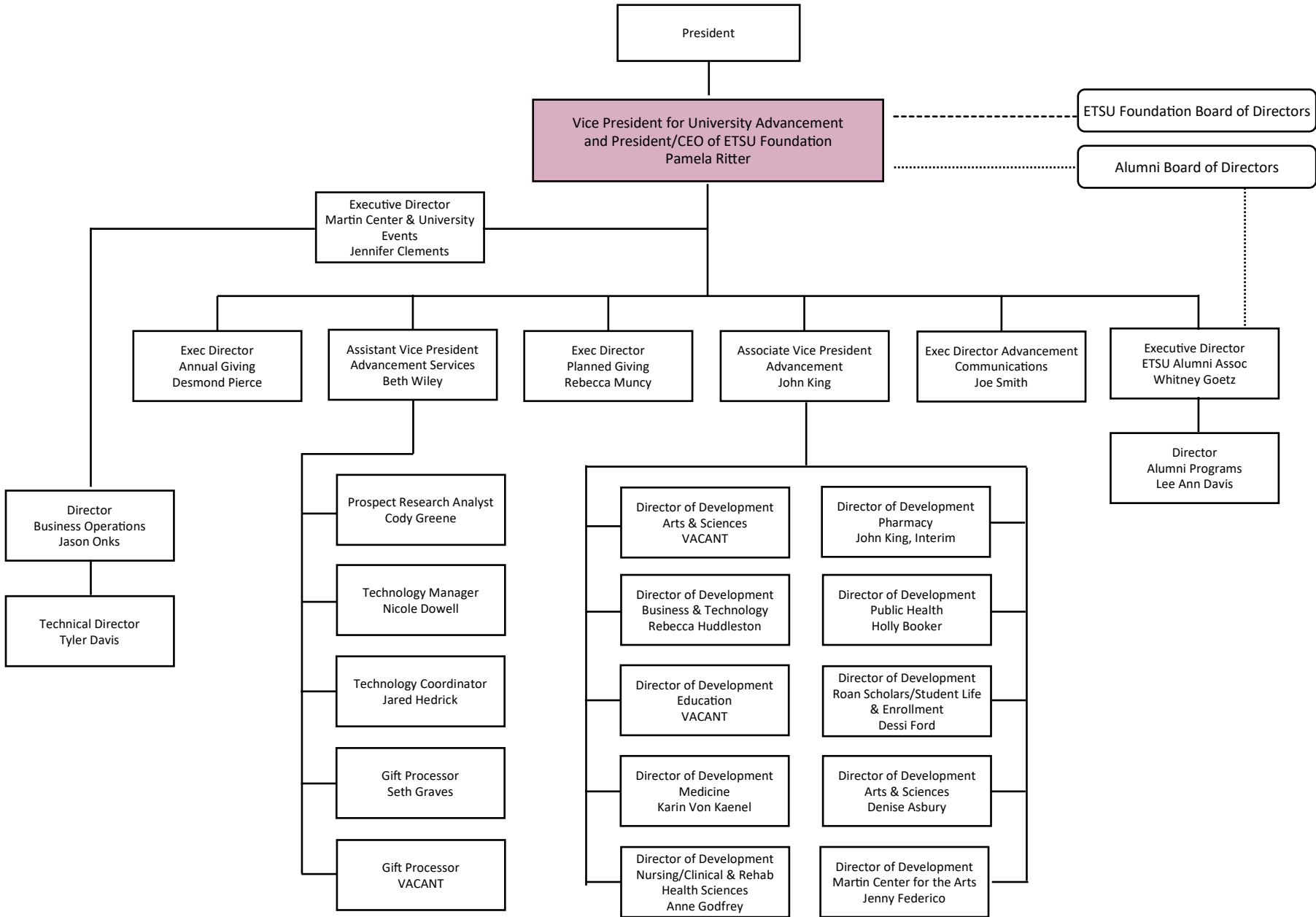
- President Direct Report
- - - Dual Role
- Unit Org Chart Below

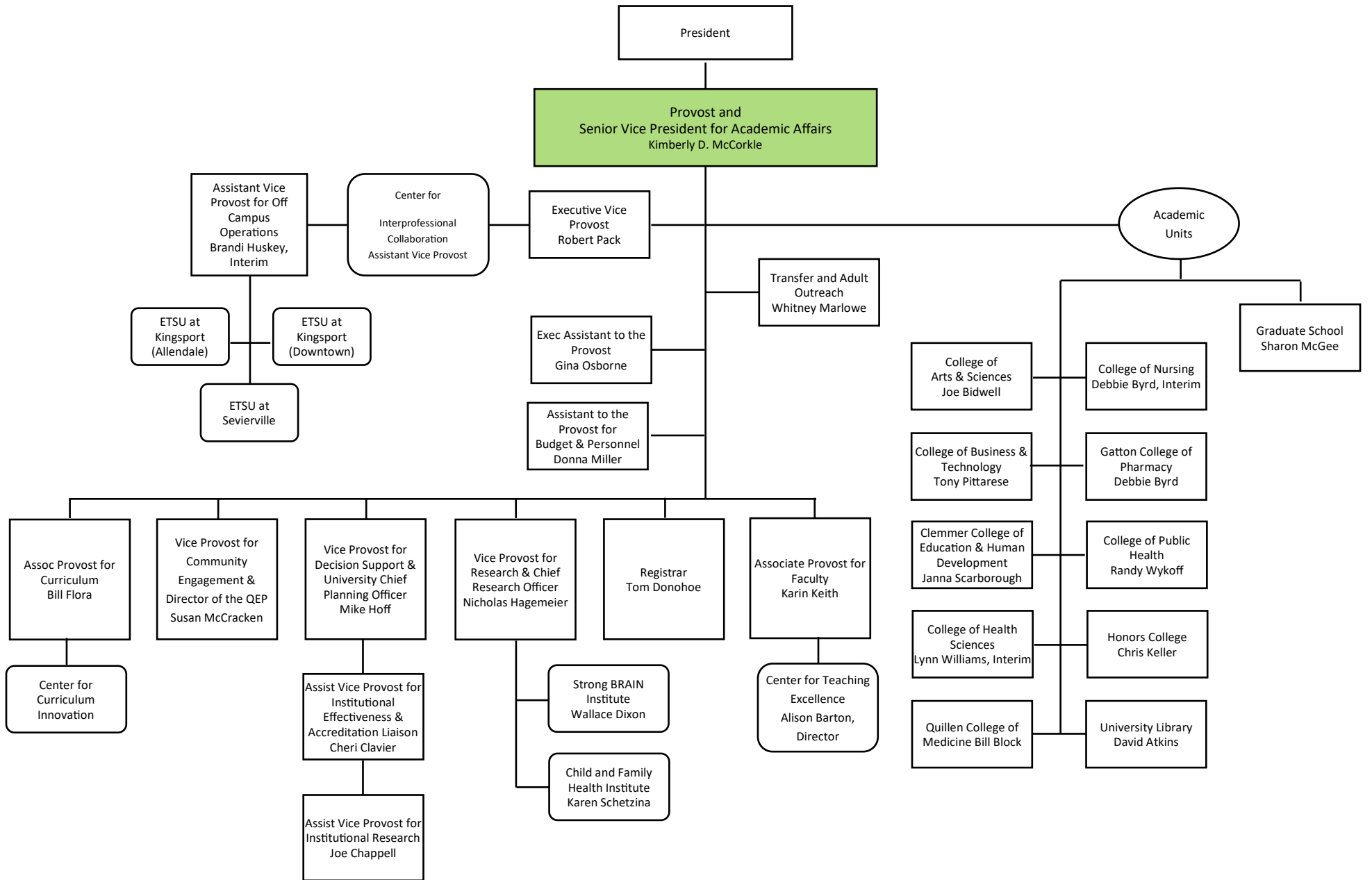


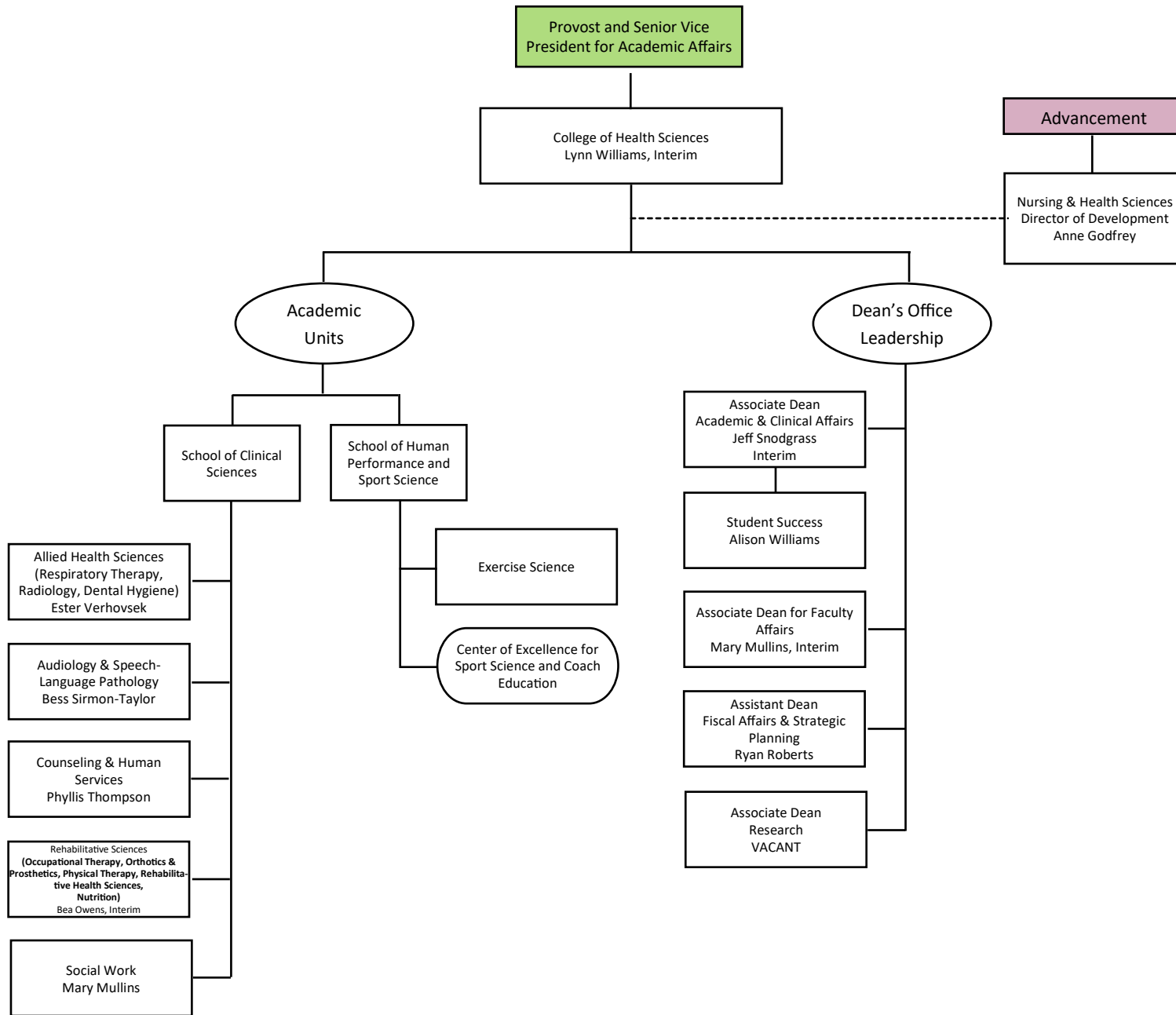


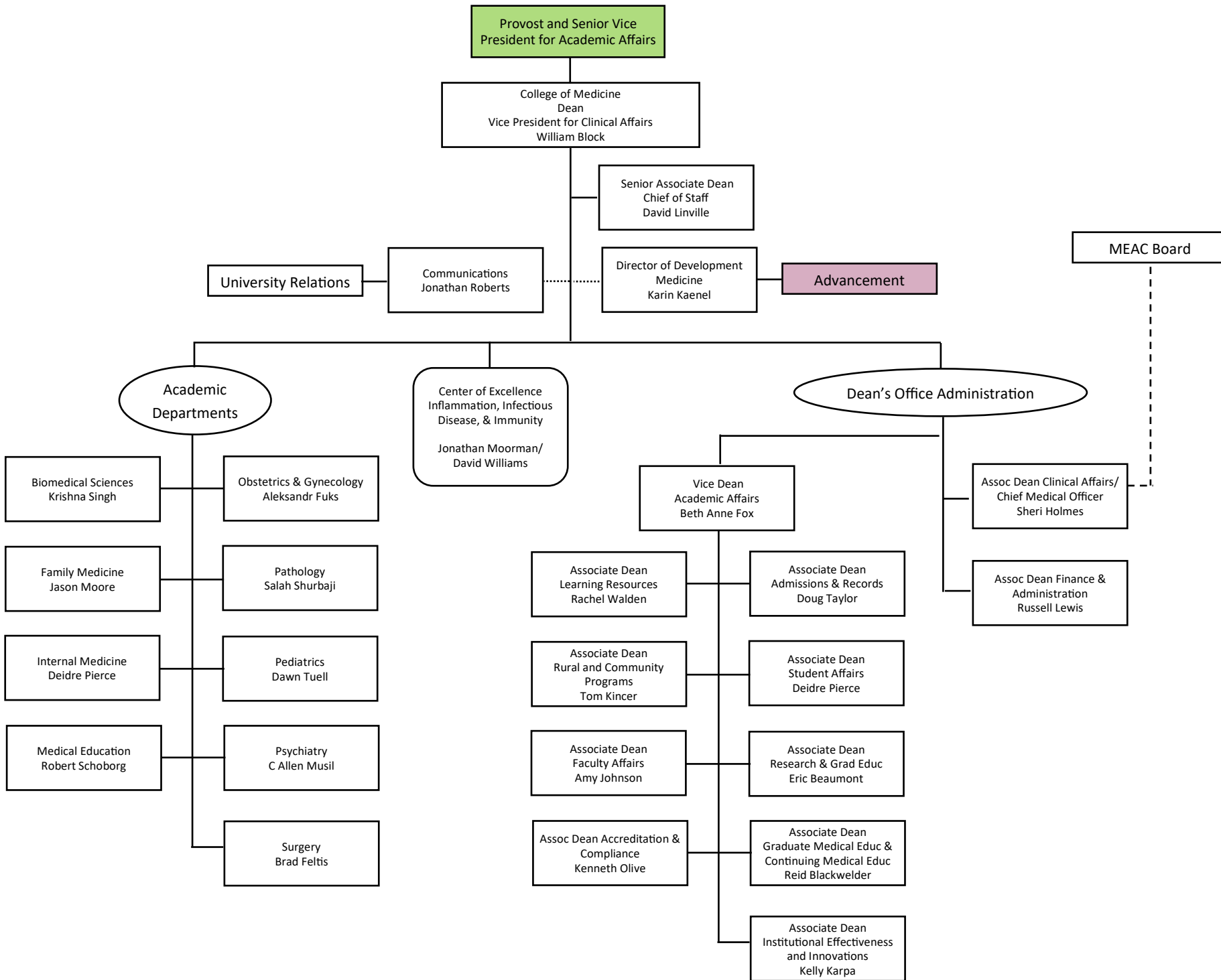


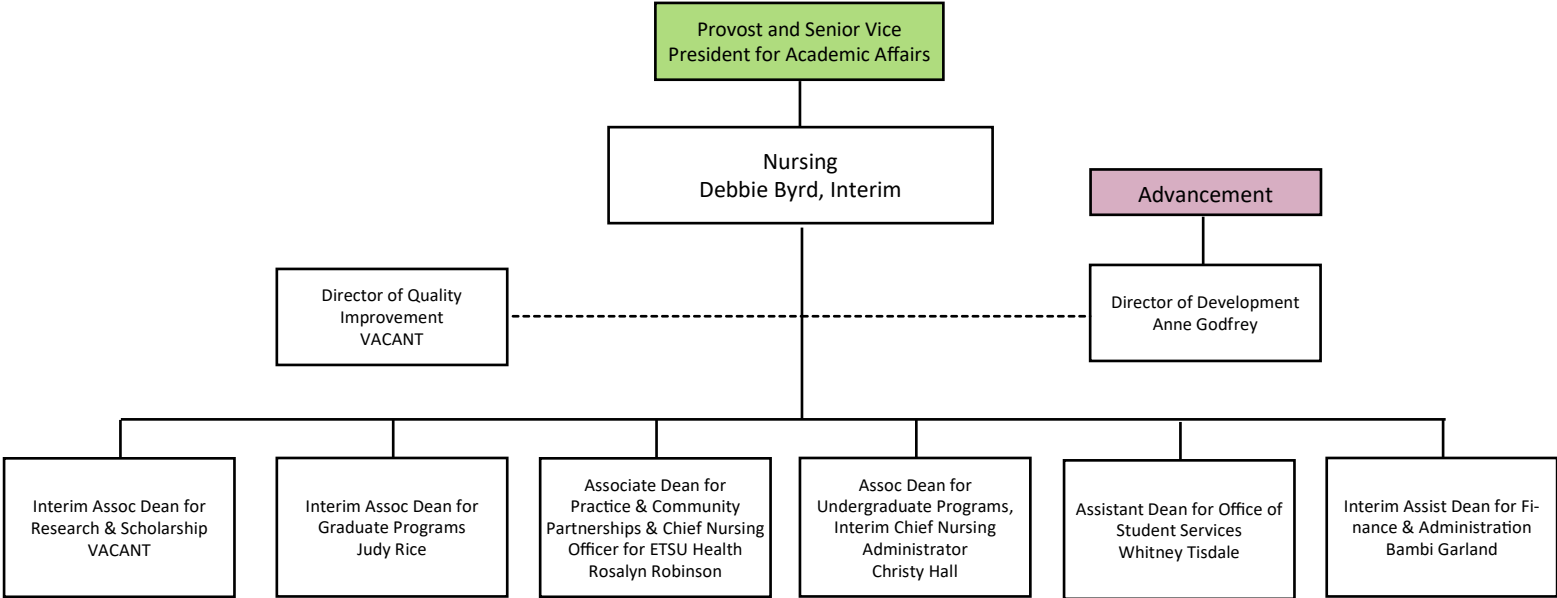


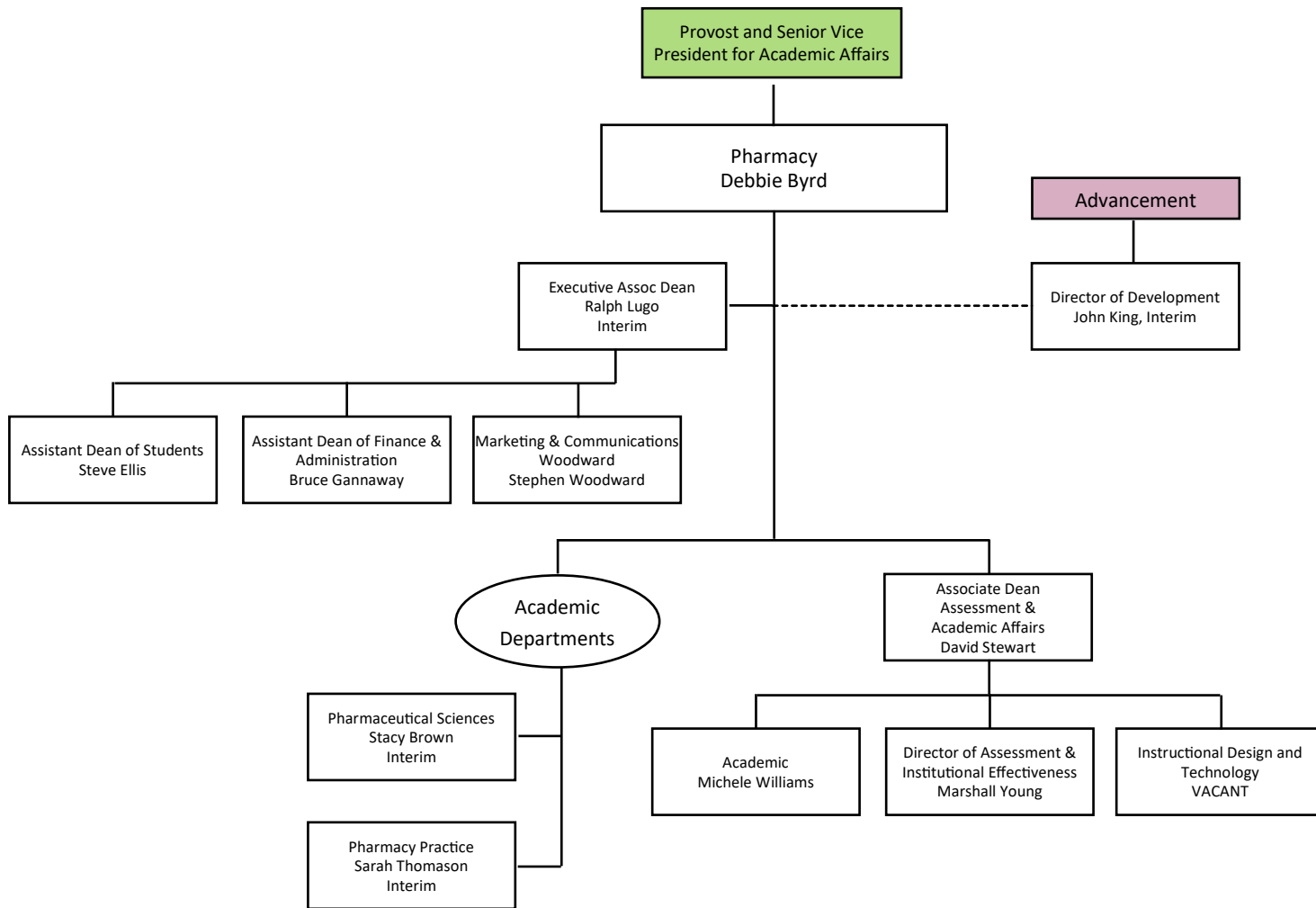


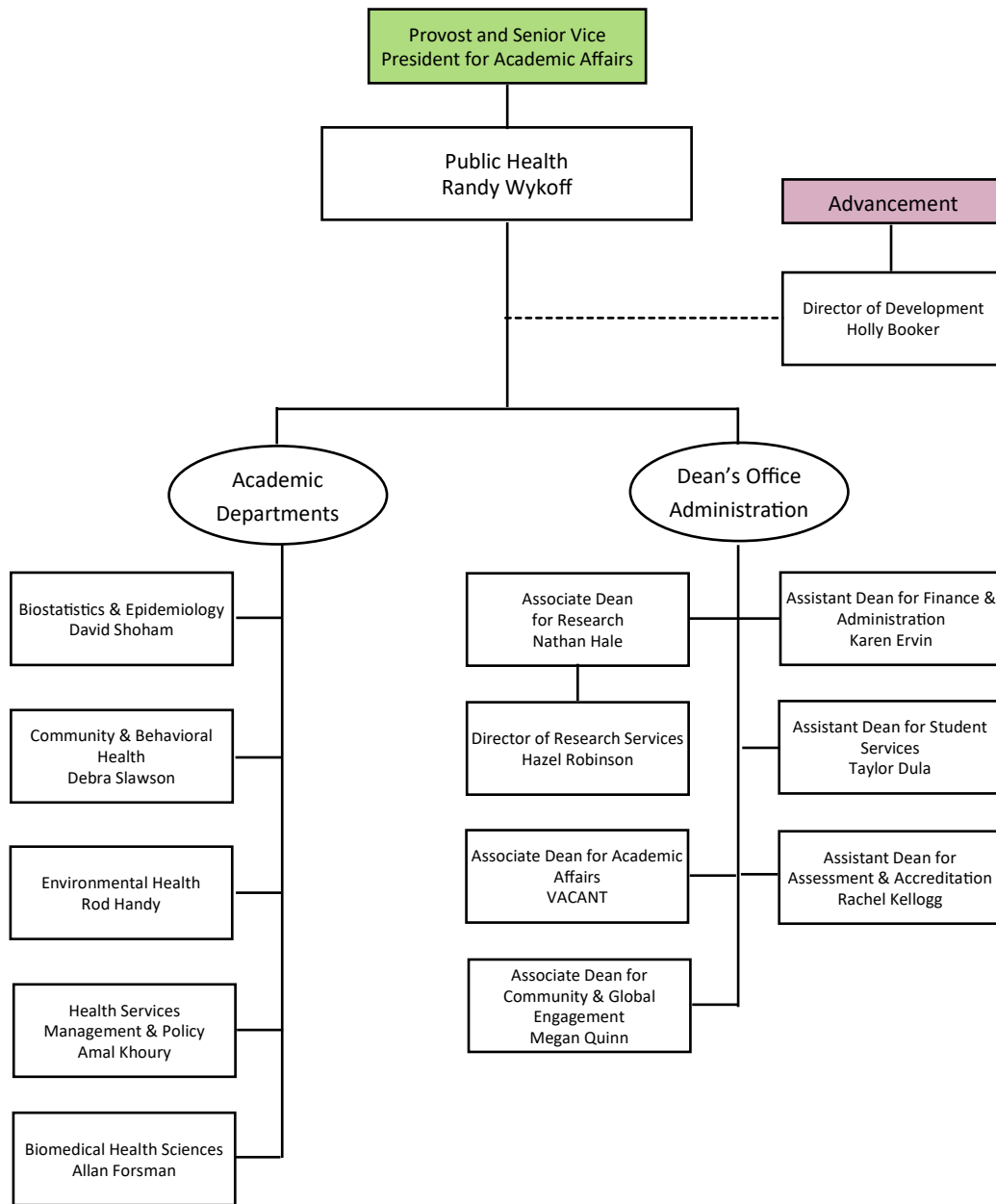












Provost and Senior Vice
President for Academic Affairs

College of Arts and Sciences
Joe Bidwell

Director of Development
Denise Asbury

Director of Development
VACANT

Advancement

Academic
Units

Dean's Office

Mary B. Martin
School of the Arts

School of Humanities
and
Social Sciences

School of Science,
Engineering and Math

Art & Design
Tao Huang

Music
Alan Stevens

Theatre & Dance
Karen Brewster

Appalachian Studies/
Center of Excellence
Ron Roach

Communication
Studies & Storytelling
Wesley Buerkle
Interim

Criminal Justice &
Criminology
Larry Miller

History
William Burgess

Literature & Language
including American
Sign Language
Daniel Westover

Philosophy &
Humanities
David Harker

Political Science,
International Affairs &
Public Admin
Colin Glennon

Psychology
Ginette Blackhart
Interim

Sociology &
Anthropology
Leslie McCallister

Biological Sciences
Dhirendra Raj Kumar

Chemistry
Robert Standaert

Engineering, Engineering
Technology, Interior
Architecture, and
Surveying
Keith Johnson

Geosciences
Arpita Nandi

Center of Excellence
Paleontology
Blaine Schubert

Mathematics &
Statistics
Daryl Stephens,
Interim

Physics & Astronomy
Donald Luttermoser

Budget & Planning
Assistant Dean
Mark Proffitt

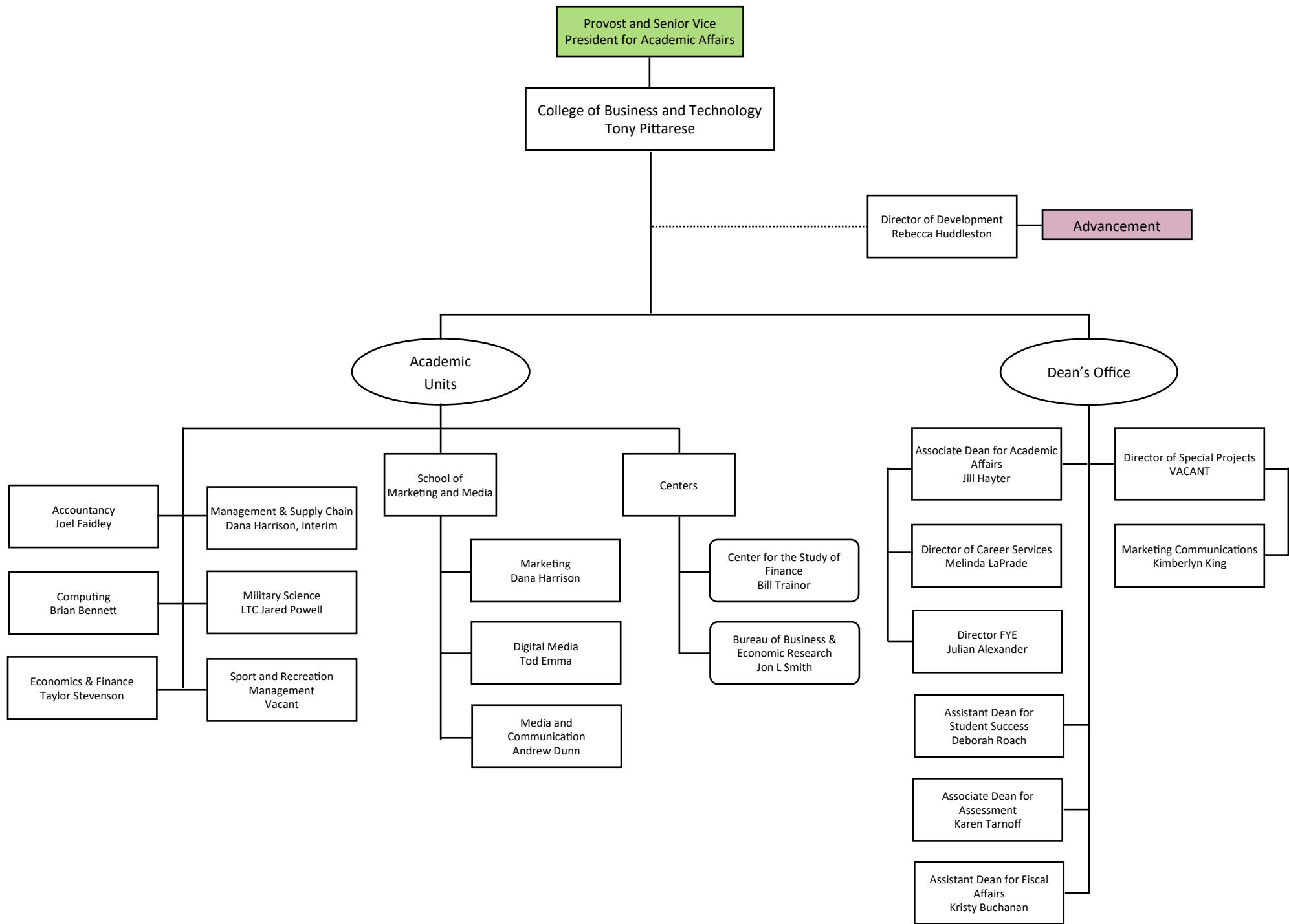
Curriculum
Associate Dean
T Alan Holmes

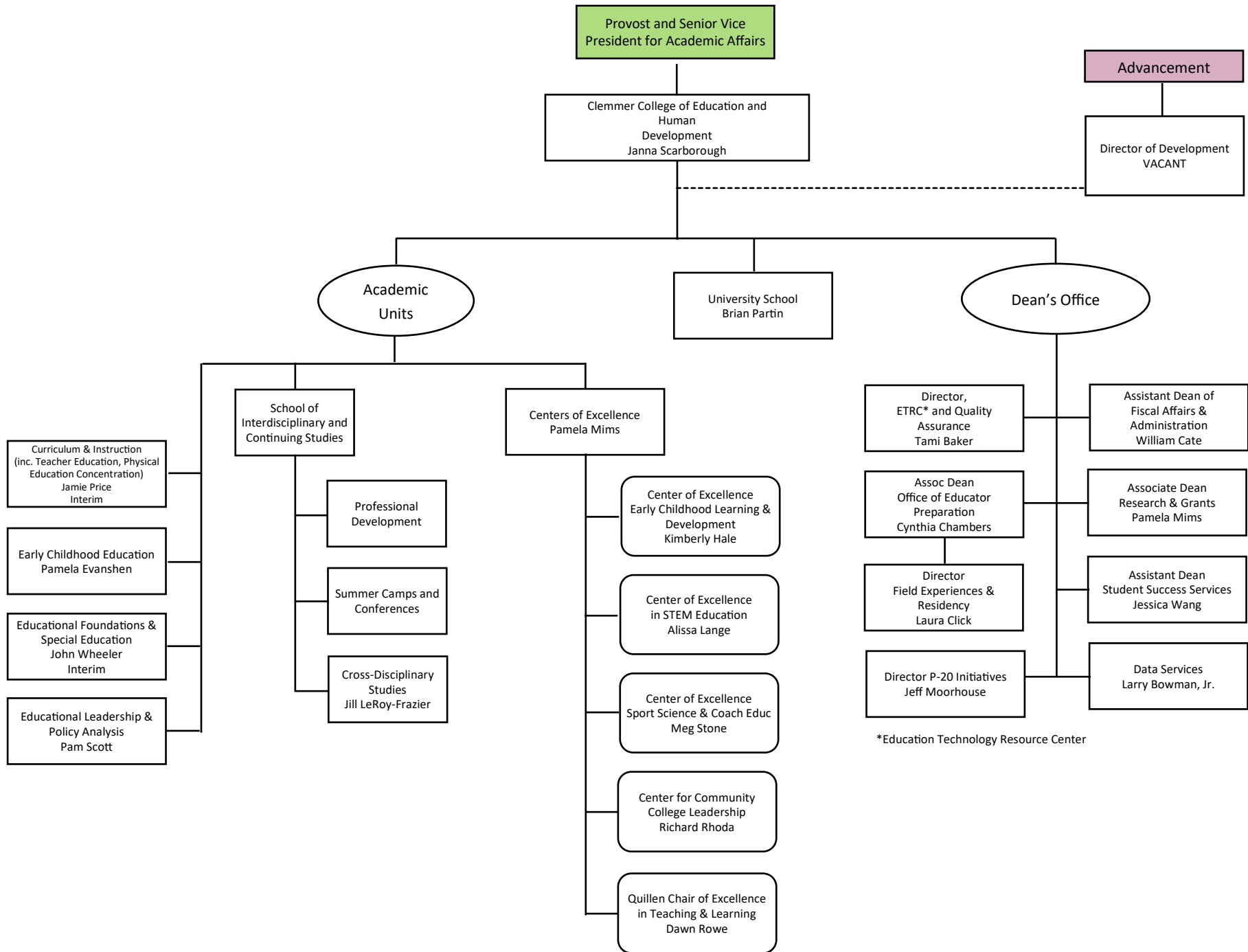
Community Relations &
Outreach
Associate Dean
Daryl Carter

Outreach & Recruitment
Assistant Dean
Jennifer Price

Student Affairs
Associate Dean
Martha Michieka

Student Success/ Center for
Advisement & Student
Excellence; Med Professions
Advisement
Assistant Dean
VACANT
CASE Directors: Paula Sarut
and Ashley Dickson
MPA Director: Shayna Fubara





*Education Technology Resource Center

