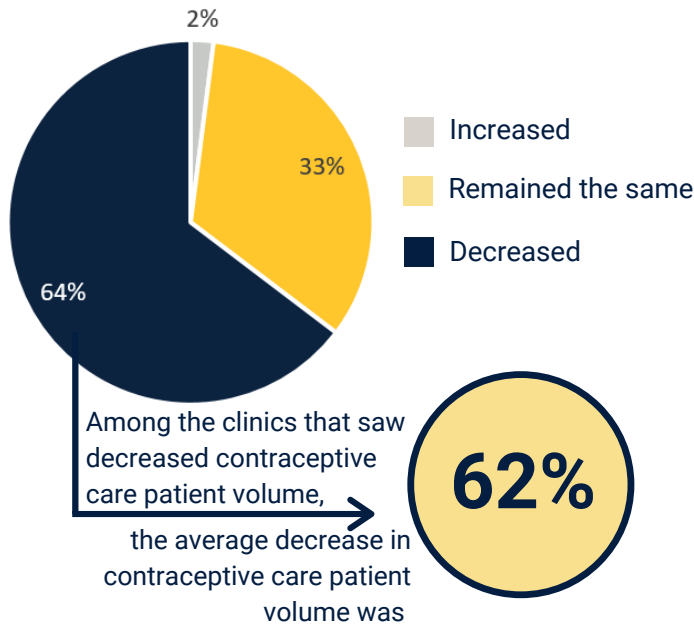


COVID-19 Impact on Contraceptive & Clinic Services at Health Departments and Federally Qualified Health Centers in South Carolina

March-June 2020

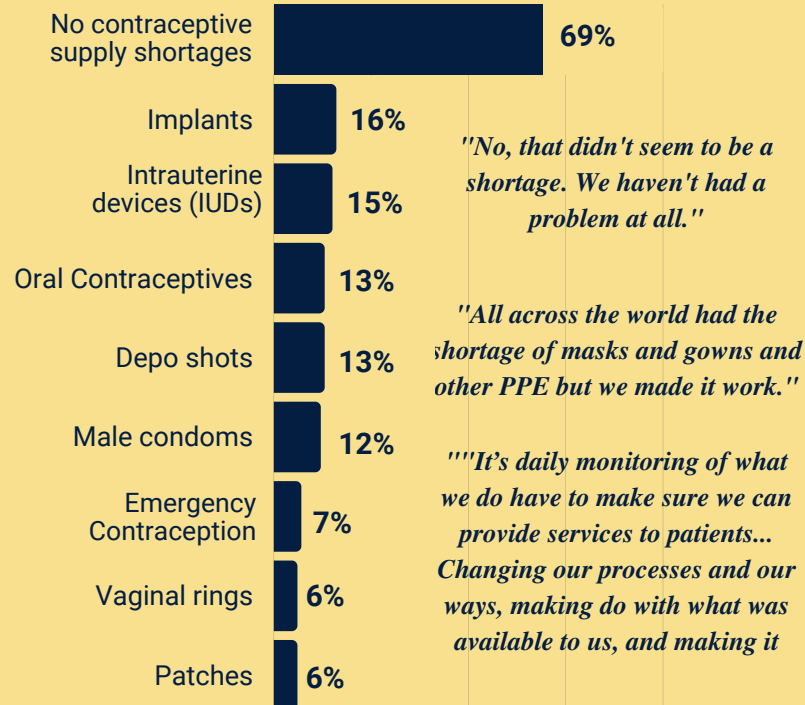
Data from 132 responding clinics

Percent of Clinics Reporting Changes in Contraceptive Care Patient Volume

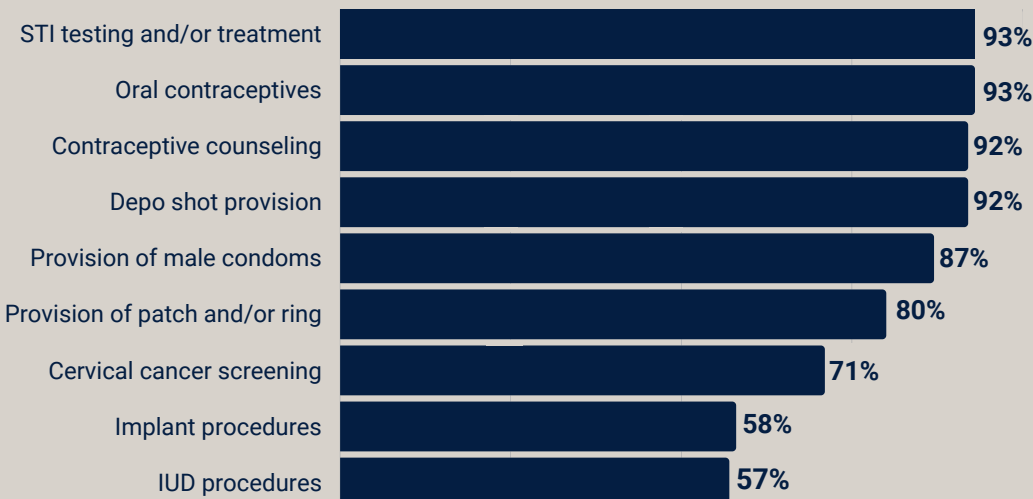


"We see decreased numbers of patients coming, and so we have decreased opportunities to discuss contraceptive care with patients."

Percent of Clinics Reporting Contraceptive Supply Shortages

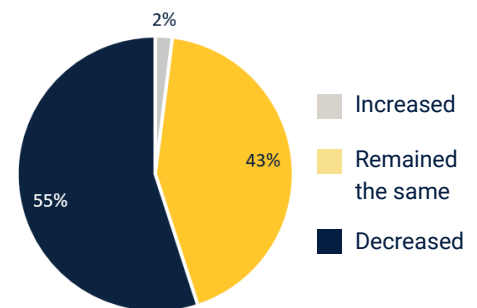


Percent of Clinics Reporting Continued Provision of Services



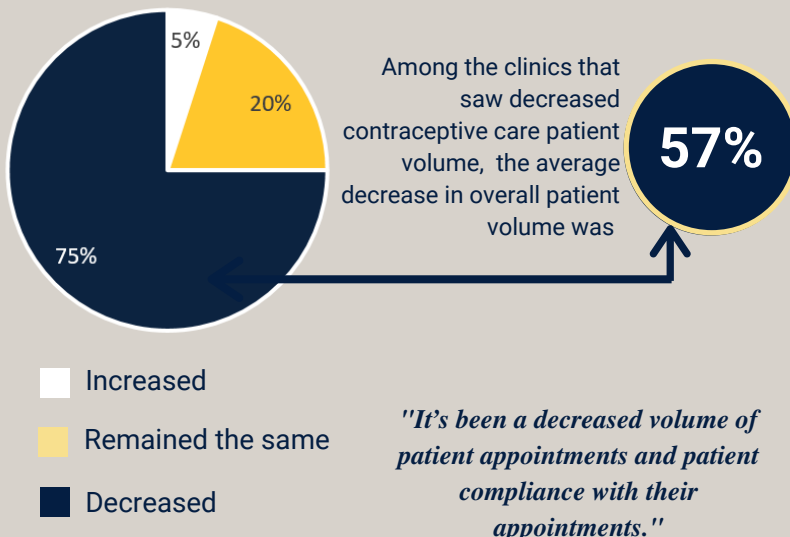
"When this pandemic was first brought to us, there were some thoughts about whether we would want to do such an invasive procedure as put an IUD in, because the virus was so new to everybody. But after a month or two into it, those thoughts went away from the providers and we started doing what we had to do."

Percent of Clinics Reporting Changes in Staffing Capacity

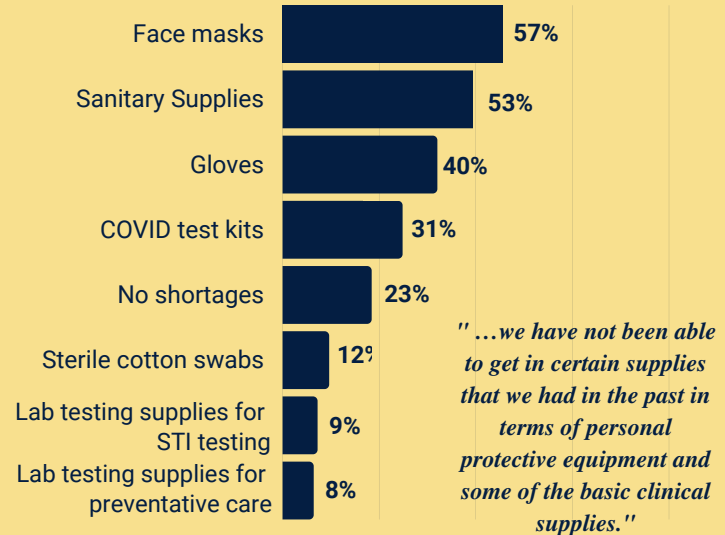


"It was a big impact on everybody since a lot of the administration staff, counselors, and social workers had to be furloughed as well. So those services were reduced and that support from the admin team was also reduced."

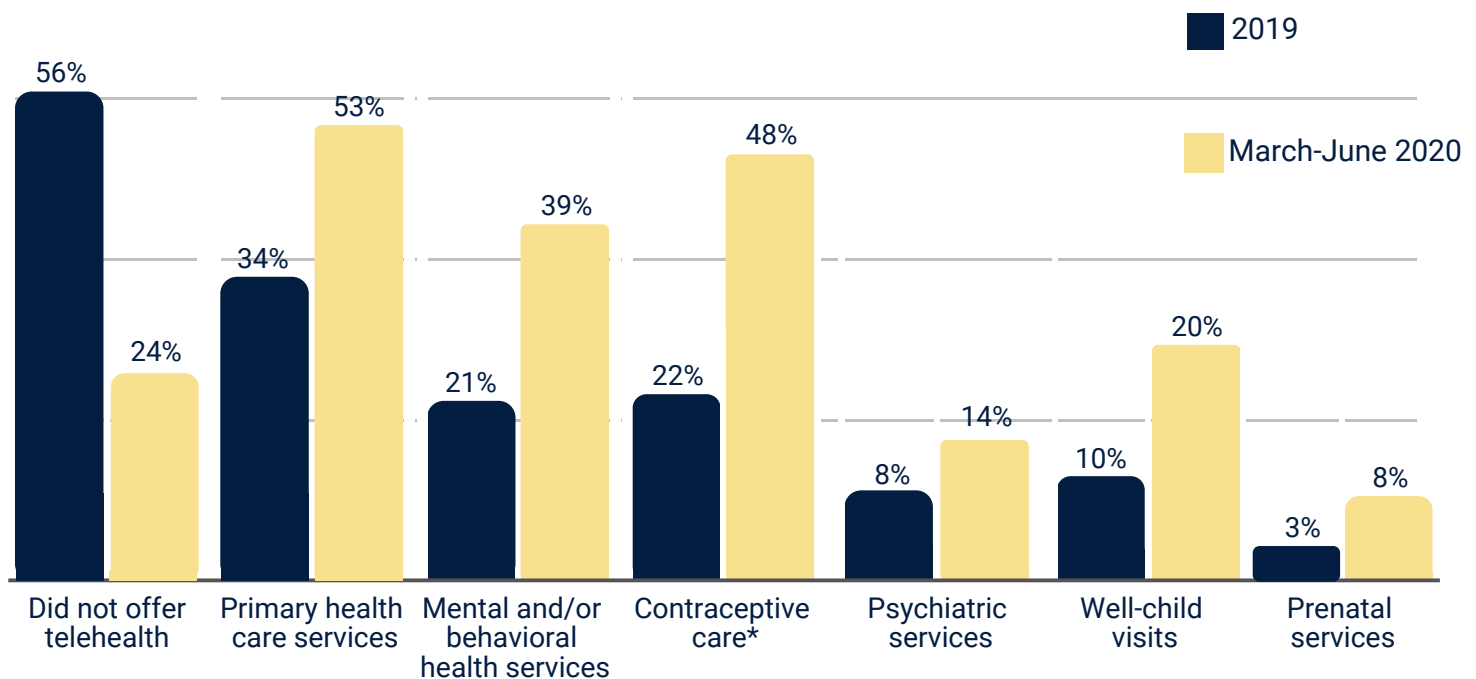
Percent of Clinics Reporting Changes in Overall Patient Volume



Percent of Clinics Reporting Medical Supply Shortages



Telehealth Services Offered by Clinics in 2019 and in March-June 2020



*Contraceptive care does not include medical abortions, as no clinics reported providing this service.

"We were planning to go into [telehealth] at a later date, but when the pandemic hit we ramped up and got all our providers doing telehealth which worked out really [well]."

"We're doing everything by telehealth except for dental. But primary care, mental health counselors, and contraceptive care [were available via telehealth]. We actually have started to implement some guidelines for a Well Woman [visit] to be done via telehealth, and then you bring the patient in later for the physical exam part."

Thank you to those clinics that participated in the 2020 health center survey!

Kate Beatty, PhD, MPH
Associate Professor
beattyk@etsu.edu (423) 439-4482

Liane Ventura, MPH
Research Project Manager
ventural@etsu.edu (423) 439-4734

Jordan de Jong, MA
Research Project Manager
dejong@etsu.edu (423) 439-4006