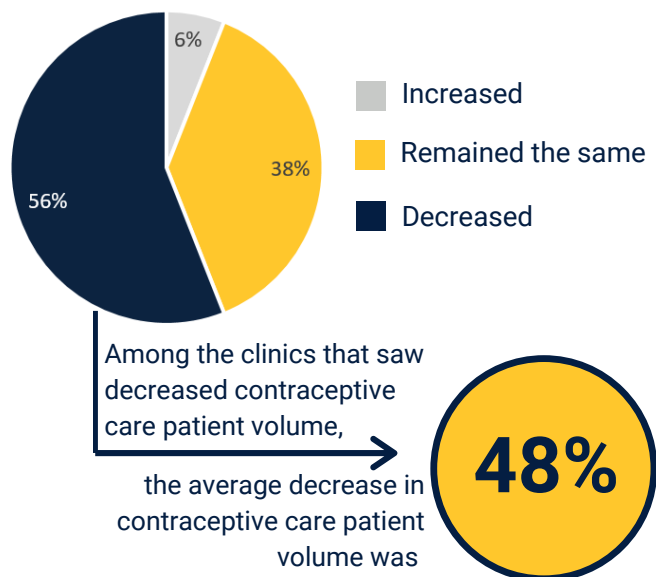


COVID-19 Impact on Contraceptive & Clinic Services at Health Departments and Federally Qualified Health Centers in Alabama

March-June 2020

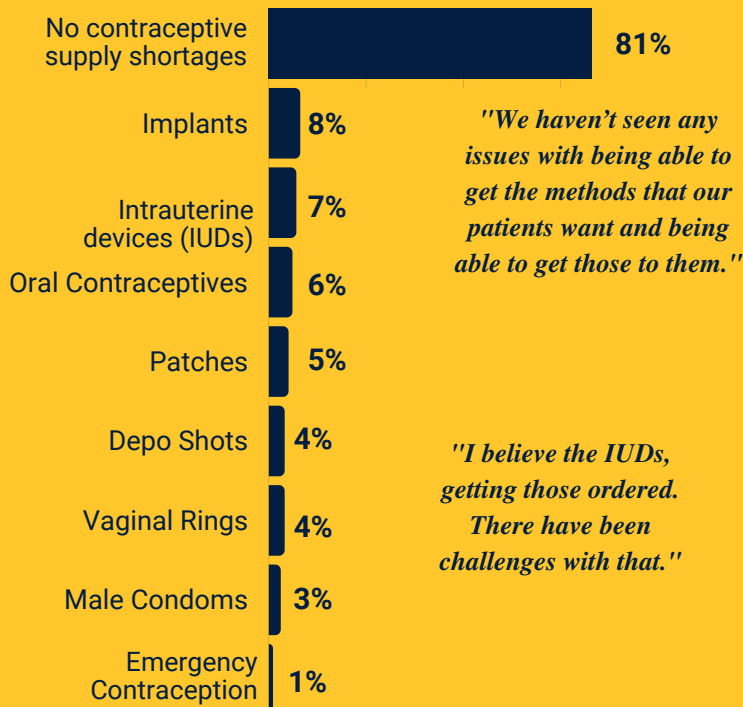
Data from 110 responding clinics

Percent of Clinics Reporting Changes in Contraceptive Care Patient Volume

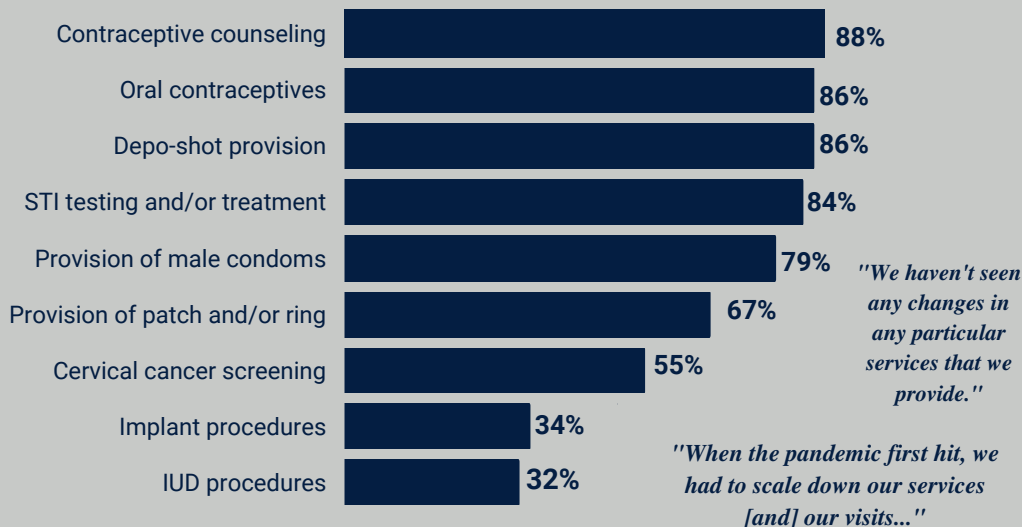


"Our patient volume tanked in March and April because that's when we were really shut down for all intents and purposes..."

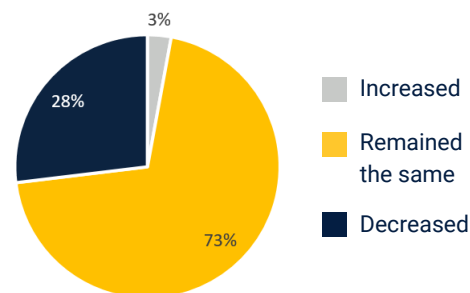
Percent of Clinics Reporting Contraceptive Supply Shortages



Percent of Clinics Reporting Continued Provision of Services

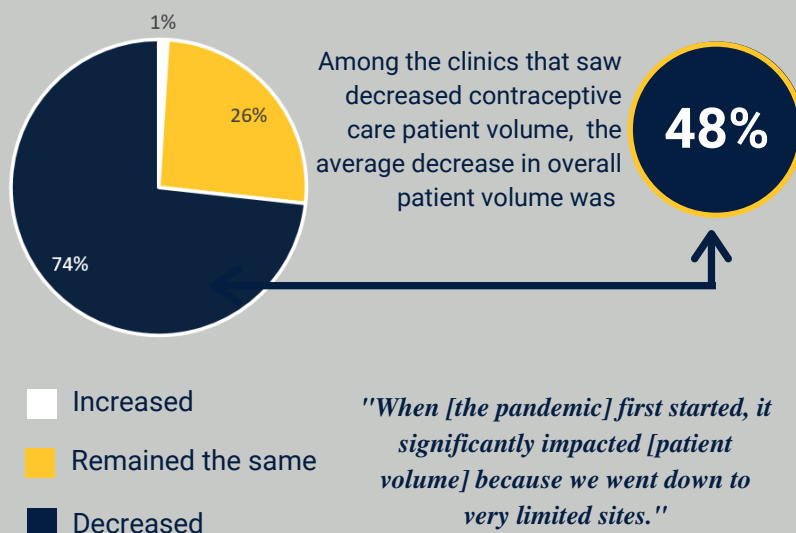


Percent of Clinics Reporting Changes in Staffing Capacity



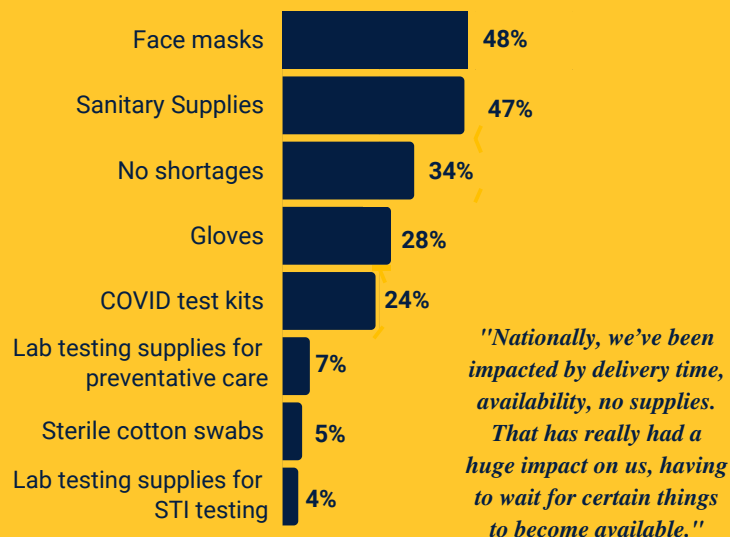
"When it became more stable in terms of staffing, we were able to get those clinics fully staffed, the way they were before COVID-19 but it was a little tricky initially."

Percent of Clinics Reporting Changes in Overall Patient Volume

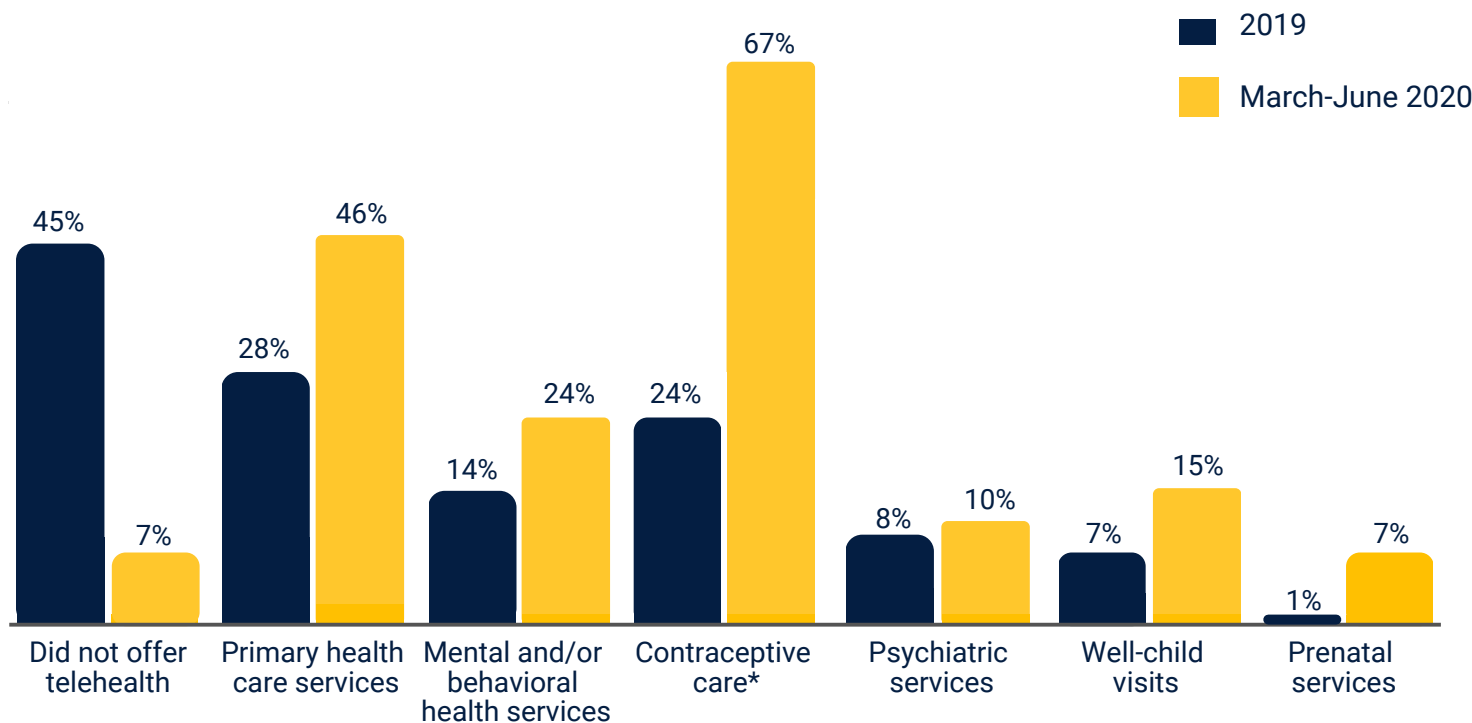


"When [the pandemic] first started, it significantly impacted [patient volume] because we went down to very limited sites."

Percent of Clinics Reporting Medical Supply Shortages



Telehealth Services Offered by Clinics in 2019 and in March-June 2020



*Contraceptive care does not include medical abortions, as no clinics reported providing this service.

"We did not provide [telehealth] before the pandemic but we were in the process of implementing it. Now we've delayed it because of the pandemic."

"We'll continue to offer everything we can via telehealth. This is certainly something that wouldn't be limited to the pandemic. It will continue."

"Once the pandemic hit, we ramped up telehealth services across the board in both behavioral health, primary health, GYN services as well."

Thank you to those clinics that participated in the 2020 health center survey!

Kate Beatty, PhD, MPH
Associate Professor
beattyk@etsu.edu (423) 439-4482

Liane Ventura, MPH
Research Project Manager
ventural@etsu.edu (423) 439-4734

Jordan de Jong, MA
Research Project Manager
dejong@etsu.edu (423) 439-4006