

ELPA

CONNECTS



CLEMMER COLLEGE

EAST TENNESSEE STATE UNIVERSITY

**EDUCATIONAL LEADERSHIP
&
POLICY ANALYSIS**

SPRING 2021



ETSU ELPA
NEWSLETTER

**SOCIAL MEDIA
INFORMATION**

Facebook:
ETSU Educational Leadership
& Policy Analysis @ ELPA01

Twitter:
@ElpaEtsu

Contact: fishdj@etsu.edu

TABLE OF CONTENTS

ELPA Updates • P. 2

Alumni Updates • P. 3 - 5

Faculty Update • P. 6 - 7

Faculty Highlights • P. 8 - 10

GA Updates • P. 11 - 12

ELPA Social Media • P. 13

ANNOUNCING THE REVISIONS TO THE M.ED. IN EDUCATIONAL LEADERSHIP!

BY JOAN ONDARI

ETSU's Academic Council has approved a number of revisions to the M.Ed. in Educational Leadership, Student Personnel concentration, effective for the fall 2021 semester. The concentration title is now **Higher Education**, which reflects the wide range of professional interests of our current and future students. The curriculum now includes several new courses, including Equity, Inclusion, & Social Justice; Student Personnel Administration; and Professional Issues in Higher Education. Students will also engage in either an **internship experience or capstone project** as their culminating experience.

We are excited about these changes and look forward to serving students interested in pursuing careers in higher education settings. For more information on the program, visit our website, or contact the program coordinator, Dr. Susan Epps, at epps@etsu.edu.

NEW HIGHER EDUCATION TEACHING CERTIFICATE LAUNCHED

BY JOAN ONDARI

The Educational Leadership and Policy Analysis Department launches its **Higher Education Teaching Certificate** for fall 2021. The certificate facilitates the growth and development of current and future higher education educators. The certificate includes five courses, emphasizing faculty roles and responsibilities, adult learning theories, and high-impact higher education instructional practices and their assessment. Students have the opportunity to customize their learning with two electives, focusing on online course design, pedagogy focused on a particular discipline, and/or curriculum development and implementation. According to Dr. Jill Channing, program coordinator, "This certificate provides **an exciting and significant learning opportunity for higher education instructors and those seeking instructor positions**. The curriculum provides the most current information on higher education learning theories and training that will ultimately result in more effective teaching and better student achievement outcomes."

ELPA

CONNECTS

TABLE OF CONTENTS

ELPA Updates • P. 2

Alumni Updates • P. 3 - 5

Faculty Update • P. 6 - 7

Faculty Highlights • P. 8 - 10

GA Updates • P. 11 - 12

ELPA Social Media • P. 13

ELPA ALUMNI NAMED TOP ASSISTANT PRINCIPAL

BY DAVID FISH

Dr. Greg English, Assistant Principal of Tullahoma High School, was named the top assistant principal in Tennessee.

English was named the **Assistant Principal of the Year** by the Tennessee Association of Secondary School Principals (TNASSP). He was nominated for this award by his principal, Jason Quick.

English graduated with a bachelor's degree in Music Education from Tennessee Tech University, a master's in Instructional Leadership from Tennessee Tech, and a doctorate in School Leadership from East Tennessee State University in Spring 2019. Then, prior to transitioning to school administration, English served as director of bands and fine arts coordinator for Tullahoma City Schools.

More on Greg English's recent accomplishment in Erin McCullough's article published originally in the [Tullahoma News](#).



Tullahoma
High School

ELPA

CONNECTS

TABLE OF CONTENTS

ELPA Updates • P. 2

Alumni Updates • P. 3 - 5

Faculty Update • P. 6 - 7

Faculty Highlights • P. 8 - 10

GA Updates • P. 11 - 12

ELPA Social Media • P. 13



COMMUNITY COLLEGE LEADERSHIP CERTIFICATE GRADUATES NAMED TO THE THIRD CLASS OF LEADERSHIP TENNESSEE NEXT

BY DR. JILL CHANNING

Community College Leadership Certificate Graduates **Patrick O'Hagan**, Chattanooga State Community College Interim Director of Kimball Site, and **Avery Swinson**, Walters State Community College Director of Admissions and Enrollment Development, have been named to the third class of **Leadership Tennessee NEXT**, a program designed to offer personal and professional career development for Tennessee's best and brightest early and mid-career professionals. The third class of Leadership Tennessee NEXT is welcoming **29 rising professionals from every state region**, representing a host of professional sectors and industries. Over the course of the program, participants will have opportunities to grow their professional skills and connect to a cross-generation network of state leaders while participating in collaborative, non-partisan dialogues on issues of state importance.

ELPA

CONNECTS

TABLE OF CONTENTS

ELPA Updates • P. 2

Alumni Updates • P. 3 - 5

Faculty Update • P. 6 - 7

Faculty Highlights • P. 8 - 10

GA Updates • P. 11 - 12

ELPA Social Media • P. 13

JUSTIN "JAY" GUILLORY, COORDINATOR OF STUDENT ACCESS AND LEADER DEVELOPMENT, MARY V. JORDAN MULTICULTURAL CENTER

BY JOAN ONDARI

We are proud to highlight the achievement of one of our alumni **Justin 'Jay' Guillory**. Jay is currently the Coordinator of Student Access and Leader Development in the **Mary V. Jordan Multicultural Center**. He has held the position from the beginning of January 2021. He oversees the Quest for Success program, BUCs academy program, and Discover ETSU. Jay is also in charge of coordinating leader training and development for student leaders who are a part of the Quest for Success and BUCS Academy Program.

Jay was part of the Master of Education in Educational Leadership Student Personnel concentration. He holds a Bachelor of Arts in History from the Northwestern State University of Louisiana and is a native of Lafayette, Louisiana.

Jay is eager to build **leadership development and training** for the Mary V. Jordan Multicultural Center and to continue working to empower the QUEST for Success and BUCS Academy Program students.



ELPA

CONNECTS

TABLE OF CONTENTS

ELPA Updates • P. 2

Alumni Updates • P. 3 - 5

Faculty Update • P. 6 - 7

Faculty Highlights • P. 8 - 10

GA Updates • P. 11 - 12

ELPA Social Media • P. 13

TESS MONTANA HIRED AS NEW ELPA EXECUTIVE AIDE

BY DAVID FISH

Recently, the ELPA Department hired a new Executive Aide who has done an outstanding job and hit the ground running! **Tess Montana** accepted the role as an Executive Aide in mid-February. A couple of her current goals in her new role include learning more about how ETSU's "main campus" works and using this as an opportunity to begin her master's degree in the near future. Tess is most excited about **working with students and faculty who are striving to better themselves through their education**. Her favorite part about working in the ELPA department so far has been the very friendly and inviting work environment. She's appreciative of the people who have been more than happy to help her get on her feet as the new Executive Aide and couldn't be more grateful for them.

Tess most enjoys helping people, even if it's something minor like a timesheet question or scheduling a Zoom meeting. **"When someone comes to me with a problem, I want them to know they can rely on me to help them out.** Once I figure out my new position as Executive Aide for ELPA, I strive to be that person again." Working in an environment with like-minded individuals who are pursuing higher education for their future goals energizes her. "It is very inspiring to see and helps me gain confidence with my plans to pursue my own master's degree, even though I am still slowly reviewing graduate programs." Another great energizer for Tess is black coffee, preferably in a huge cup.

WELCOME

ELPA

CONNECTS

TABLE OF CONTENTS

ELPA Updates • P. 2

Alumni Updates • P. 3 - 5

Faculty Update • P. 6 - 7

Faculty Highlights • P. 8 - 10

GA Updates • P. 11 - 12

ELPA Social Media • P. 13

TESS MONTANA HIRED AS NEW ELPA EXECUTIVE AIDE, CONT...

BY DAVID FISH

In her free time, due to the current pandemic, Tess spends her time virtually hanging out with friends and playing video games and Dungeons and Dragons on the weekends. Tess is also very fond of crime/cult documentaries and could binge them all day!

Finally, Tess's favorite things about Johnson City include the views of the mountains (as well as the scenery), the optimal weather, the energy of the town, and how close everything is. She's glad to **move back and be a part of the community** after graduating from ETSU in 2017. "Being able to be back on campus with the ETSU community has done wonders for my mental health and is helping me figure out if I'm wanting to teach art, work with sports management, possibly work with animals...who knows! For now, I am enjoying my life back with 'main campus' ETSU and look forward to what the future holds."



ELPA

CONNECTS

TABLE OF CONTENTS

ELPA Updates • P. 2

Alumni Updates • P. 3 - 5

Faculty Update • P. 6 - 7

Faculty Highlights • P. 8 - 10

GA Updates • P. 11 - 12

ELPA Social Media • P. 13

CHANNING, ELPA FACULTY, AND STUDENTS COLLABORATE TO PRESENT AT SEVERAL SPRING CONFERENCES

BY JOAN ONDARI

Dr. Jill Channing, ELPA Department Chair, presented at several spring conferences. Drs. Channing and Lampley presented "Students' Perceptions of an Online Program and D2L Learning Management System: Implications for Educators" at the spring Clemmer College Online Teaching Retreat. They discussed the results from a survey to learn more about students' D2L use and suggestions for online program improvements. They concluded that **students placed high levels of importance on communicating with faculty and other students, as well as clarity in online course design.** Drs. Channing and Scott presented "Wrap-around Support for Online Dissertation Students during COVID-19" at the Eastern Educational Research Association. This presentation focuses on developing research communities and the use of **support mechanisms** such as mentoring and dissertation boot camp to facilitate students' progression through dissertation milestones and ultimately **dissertation completion.**

Dr. Channing, Doctoral Fellow James Bernard, and Graduate Assistant Carmine Cuda presented "Student Evaluations of Teaching: What Are They Good For?" at the Eastern Educational Research Association Conference. They wrote an extensive literature review on student evaluations of teaching (SETs), examining over 300 studies. Although they found mixed results, they derived several implications for practice and research for institutions to **improve their uses of SETs.** In addition, Dr. Channing presented "What Do I Do Now?: Tackling Higher Education Adaptive Leadership Challenges" at the 38th Annual Academic Chairpersons Conference. During this presentation, Dr. Channing discussed a qualitative study focused on **leadership learning, communication, and navigation.** Dr. Channing discussed the ways participants' engaged in adaptive leadership before and during the COVID-19 outbreak.

ELPA

CONNECTS

TABLE OF CONTENTS

ELPA Updates • P. 2

Alumni Updates • P. 3 - 5

Faculty Update • P. 6 - 7

Faculty Highlights • P. 8 - 10

GA Updates • P. 11 - 12

ELPA Social Media • P. 13

IN MEMORIAM ELPA ED.D. GRADUATE AND TENNESSEE BOARD OF REGENTS VICE CHANCELLOR ALLANA HAMILTON



Dr. Hamilton leaves behind an indelible legacy over her three decades at TBR – first at Northeast State Community College where she rose from the biology faculty to Chief Academic Officer, then as President at Jackson State Community College, and since October 2019, as Vice Chancellor for Academic Affairs at the TBR system office. **Her professionalism, knowledge, sweetness, and collegiality were genuine and ever-present, and she shared them liberally with all who knew her. Every word, every action, and every day of her life was filled with joy for her work, colleagues, family, and students.**

Dr. Hamilton earned a Bachelor of Science degree in biology at Tusculum College in 1987, a Master of Science in biological sciences at East Tennessee State University in 1991, and a Doctorate in Education at ETSU in 2011.

Her commitment to the mission and philosophy of community colleges was underscored by her enrollment and participation in at least nine leadership institutes and academies focused on student, faculty, and institutional success, including the Tennessee Board of Regents Advanced Leadership Academy, Regents Community College Leadership Academy, and a 150-hour internship focused on performance funding and research. Her doctoral dissertation focused on student persistence to graduation within a community college.

ELPA

CONNECTS

TABLE OF CONTENTS

ELPA Updates • P. 2

Alumni Updates • P. 3 - 5

Faculty Update • P. 6 - 7

Faculty Highlights • P. 8 - 10

GA Updates • P. 11 - 12

ELPA Social Media • P. 13

DR. DON GOOD'S ROLE AS AN EXTRA IN THE MOVIE 'MAYBERRY MAN'

BY JOAN ONDARI

Dr. Don Good landed a role in 'Mayberry Man,' a movie that celebrates the longevity and wholesomeness of the famous 'Andy Griffith show.' The Andy Griffith show highlights a fictionalized town, 'Mayberry,' and its chief lawman who rarely used weapons or authoritarianism to instill order. An ardent fan of the 'Andy Griffith show' series, Dr. Good has seen 249 installments of the series multiple times, 159 of which have been shot in black and white.

Dr. Good was charmed by the fact that he was chosen to play a buddy of Mr. Shwamp, one of the mystery characters who never spoke despite making several appearances. Participating in the movie has taught him a lot about the moviemaking process. "One thing I learned about filmmaking is how long it takes. Scenes are typically filmed multiple times before they are deemed 'just right' by the director. This can be difficult even for extras like me."

The movie is scheduled for advanced showings beginning this spring. DVDs will be released to the participants and backers in the summer. The producers are currently working on securing a distributor, so it is yet to be determined where and when it will be available to the public.



ELPA

CONNECTS

TABLE OF CONTENTS

ELPA Updates • P. 2

Alumni Updates • P. 3 - 5

Faculty Update • P. 6 - 7

Faculty Highlights • P. 8 - 10

GA Updates • P. 11 - 12

ELPA Social Media • P. 13

NEW ELPA GRAD ASSISTANTS

At the start of this semester, ELPA welcomed two new students to the Graduate Assistant staff.

WELCOME, CARMINE CUDA

I am originally from Springfield, VA, and attended Georgia Tech where I pursued my undergraduate in Biomedical Engineering. **My career goal is to be a Physics teacher with an ELL background.** Having only worked in the ELPA department for a couple months now, I have enjoyed getting to explore research through an educational lens. In my free time I enjoy hiking, biking, longboarding, reading, volunteering with Habitat for Humanity, and foster aunting Colt and Zach. I chose to attend ETSU since it has a great education program and is in town. The opportunity to work as a GA also makes it affordable and is something I can do where I'm at right now. **My favorite thing about Johnson City so far would be living in the mountains as well as all the different opportunities to get out and explore nature.** I am most excited about having the opportunity to learn about and contribute to educational research as well as being part of a friendly work environment. Some highlights of my experience as a GA so far includes working towards an ADVANCE grant application and all the learning I have gotten to do in that process.



ELPA

CONNECTS

TABLE OF CONTENTS

ELPA Updates • P. 2

Alumni Updates • P. 3 - 5

Faculty Update • P. 6 - 7

Faculty Highlights • P. 8 - 10

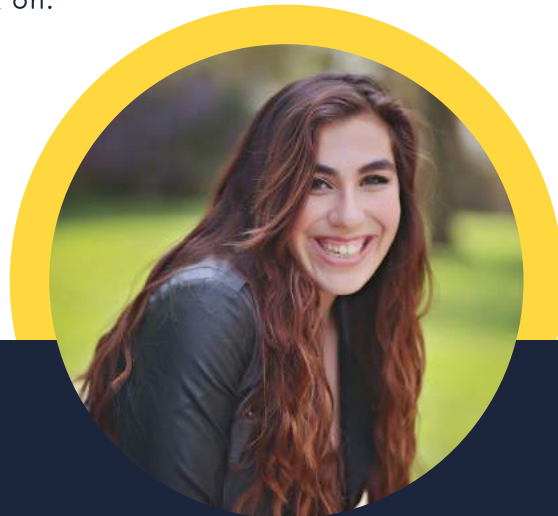
GA Updates • P. 11 - 12

ELPA Social Media • P. 13

NEW ELPA GRAD ASST. CONT...

WELCOME, MEAGHAN HEIMBACH

I am from Rockford, Illinois, and attended undergraduate at Illinois State University where I earned a B.S. in Organizational and Leadership Communication with a double minor in Psychology and Sociology. **I would like to work towards a career in higher education with an emphasis towards orientation services or admissions.** I worked in both departments at my undergrad, and I fell in love with helping prospective and incoming students. My first couple of months working in the ELPA department have been exciting, since I love the number of different projects I get to work on and people I have the opportunity to work with. It has been great working on the department website and a new orientation program. It is always fun coming into the office and collaborating with the other GAs. Everyone here has been so welcoming and helpful! In my free time, I enjoy being outside, playing soccer and getting into hiking around here more. I also enjoy reading fantasy books and watching Harry Potter and Marvel movies. I was first drawn to ETSU because of the flexibility online classes give and the variety of GA positions that are available. In speaking with Dr. Epps during my interview, the tight knit community of the university and the clear attention given to student and faculty success is why I chose to attend ETSU. **My favorite thing about Johnson City so far is being able to explore the different trails and outdoor areas that the region offers.** Being around the mountains is amazing, plus the weather in Tennessee is so much better than Illinois! I also love trying out all the new food and coffee places. The opportunity to work as a GA makes me excited to come to the office because of the people I have the privilege to collaborate with which makes work and projects exciting. Getting to know the people that make up the ELPA department has been great and everyone is deeply knowledgeable. The projects I work on, such as the website, is a great creative and academic challenge. I am glad I get to use my undergrad skills and the new skills I have developed here on each project I work on.



ELPA

CONNECTS

TABLE OF CONTENTS

ELPA Updates • P. 2

Alumni Updates • P. 3 - 5

Faculty Update • P. 6 - 7

Faculty Highlights • P. 8 - 10

GA Updates • P. 11 - 12

ELPA Social Media • P. 13

KEEPING UP WITH ELPA SOCIAL MEDIA!

Starting last fall, the ELPA Department began sharing weekly posts that include **Mantra Monday** (see below, left), **Teaching Tip Tuesday** (see bottom), and **Faculty Friday** (see below, right). Like our page on **Facebook: ETSU Educational Leadership & Policy Analysis** (facebook.com/ELPA01) and follow us on **Twitter @ElpaEtsu or @Ccc1Etsu**.

TO BUILD A STRONG TEAM, YOU MUST
SEE SOMEONE ELSE'S
STRENGTH
AS A COMPLEMENT TO YOUR
WEAKNESS
NOT A THREAT
TO YOUR POSITION OR AUTHORITY.

CHRISTINE CAINE

TENNESSEE STATE UNIVERSITY Faculty Friday
Educational Leadership and Policy Analysis

JOURNEY INTO YOUR CAREER

What led you to this career?
My ultimate goal with my current career is to pursue my Master's degree, but I have been unsure of which direction I wanted to go since I graduated with my Bachelor's back in 2017. Being able to be back on campus with the ETSU community has done wonders for my mental health, and is helping me figure out if I'm wanting to teach art, work with sports management, possibly work with athletics, who knows! For now, I am enjoying my life back with "main campus" ETSU, and look forward to what the future holds.

What's a work-related accomplishment that you're really proud of?
Honestly, I greatly enjoy helping people, even if it's something minor like a time sheet question or scheduling a zoom meeting. When someone comes to me with a problem, I want them to know they can rely on me to help them out. Once I figure out my new position as Executive Aide for ELPA, I strive to be that person again.

What energizes you at work?
Working in an environment with like-minded individuals who are pursuing higher education for their future goals. It is very inspiring to see, and helps me gain confidence with my plans to pursue my own Master's degree, even though I am still slowly reviewing graduate programs. Another great energizer is black coffee, a huge cup of black coffee.

A BIT ABOUT YOU!

What book(s) are you currently reading?
Waterloo Down by Richard Adams
Outlander by Jane Austen. I'd also like to read The Winds of Winter by George Martin... if it ever comes out.

What hobbies do you have during time?
Before the pandemic, I used to go out and dabble in photography. Nowadays I bring my camera everywhere, even on my virtual home days.

CUES

back to the basics of
classroom management

ELPA

CONNECTS