

May 2018 Tennessee Climate Summary

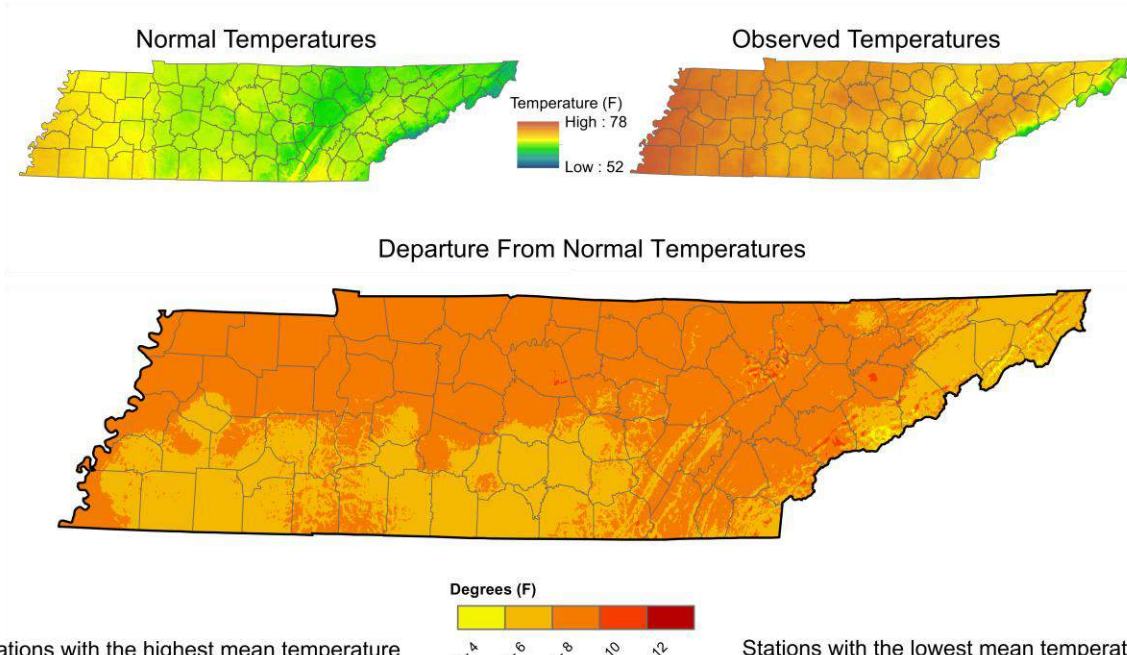
Prepared by William Tollefson & Dr. Andrew Joyner,
Tennessee Climate Office, Dep. Of Geosciences, East Tennessee State University

Monthly Temp Summary:

Coming out of April, and a cool spring, Tennessee seemed to jump right into summer during May. Temperatures were above normal in all parts of the state for the month. The first week of the month was the closest to normal, with a few places up to 1 degree below normal, but most of the state experienced 1 degree above normal temperatures. For the rest of the month, mean temperatures were 4-10°F above normal! Based on mean temperatures, both Memphis and Nashville recorded their warmest May on record; and Chattanooga, Knoxville, and the Tri-Cities all recorded their second warmest May on record. Nashville recorded 9 days with high temperatures at or above 90°F, similarly Memphis recorded 8 days at or above 90°F.



May 2018 Mean Temperature



Stations with the highest mean temperature

Name	Station Type	Mean Temperature (F)
MEMPHIS INTERNATIONAL AP	WBAN	77.4
GERMANTOWN 4SE	COOP	76.7
MEMPHIS WFO	WBAN	75.8
SHILOH NMP TENNESSEE	RAWS	75.8
BROWNSVILLE	COOP	75.7

Map Data From: PRISM Climate Group,
Oregon State University,
1980-2010 Normals Used
Station Data retrieved from SC ACIS2

Stations with the lowest mean temperature

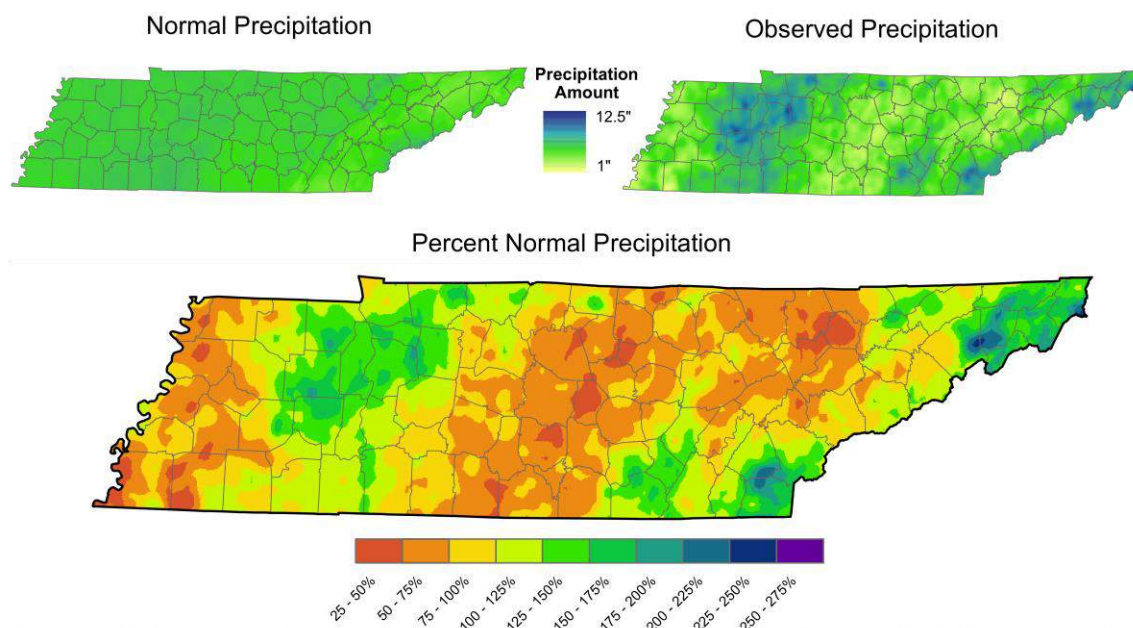
Station Name	Station Type	Mean Temperature (F)
MT LECONTE	COOP	53.6
NEWFOUND GAP	COOP	61.5
ROAN MOUNTAIN 3SW	COOP	64
CHEROKEE TENNESSEE	RAWS	66.4
GATLINBURG 2 SW	COOP	67.4

Monthly Precipitation Summary:

For most of the month the state recorded below normal precipitation, although tropical moisture associated with Tropical Storm/Depression Alberto at the end of the month resulted in some areas of the state recording more than 200% of normal precipitation. Similar to the temperatures in May, the precipitation pattern was more like that of later summer months. Characterized by slow-moving and meandering thunderstorms that produced locally heavy downpours, while leaving many areas dry. The Cumberland Plateau, and the central/northwestern sections of the Tennessee Valley were the driest areas with precipitation totals ranging from 1.25 to 3 inches; areas of northern-Knox, Anderson, Union, and southern-Campbell counties were nearing drought conditions during the month. Rainfall associated with Alberto produced the most rain in the mountains of southeast and northeast Tennessee, as well as the areas along the western portion of the Tennessee River where the center of circulation tracked on the 29th. This heavy rainfall produced flooding, especially in the rivers of eastern Tennessee which have headwaters in western North Carolina, where over a foot of rain was produced in the last week of the month!



May 2018 Precipitation



Stations with the most precipitation

Station Name	Station Type	Total Precipitation (in)
NEWFOUND GAP	COOP	10.17
DICKSON 12.7 NW	CoCoRaHS	9.82
LAFAYETTE	COOP	9.14
CLARKSVILLE 4.0 WNW	CoCoRaHS	8.92
VANLEER 2.8 SE	CoCoRaHS	8.85

Map Data From: PRISM Climate Group,
Oregon State University.
1980-2010 Normals Used
Station Data retrieved from SC ACIS2

Stations with the least precipitation

Station Name	Station Type	Total Precipitation (in)
OAKLAND 2.9 SSE	CoCoRaHS	1.23
LENOIR CITY	COOP	1.47
MURFREESBORO 3.2 WSW	CoCoRaHS	1.47
LEBANON 10.5 ENE	CoCoRaHS	1.61
CORNERVILLE 10.5 SSE	CoCoRaHS	1.74

Top Tenn. (warmest/wettest, coldest/driest stations)

Hottest Stations (highest max temp):

Station Name	Station Type	Highest Temperature (F)
GERMANTOWN 4SE	COOP	96
WOODBURY 1 WNW	COOP	96
ARDMORE	COOP	95
SHILOH NMP TENNESSEE	RAWS	95
MEMPHIS WFO	WBAN	94
FRANKLIN SEWAGE PLANT	COOP	94
MILAN EXP STN	COOP	94
JACKSON EXP STA	COOP	94
LEBANON	COOP	93
JACKSON 4 NE	COOP	93
BETHPAGE 1 S	COOP	93
CLARKSVILLE WWTP	COOP	93
NASHVILLE INTL AP	WBAN	93
NASHVILLE BERRY FIELD	COOP	93
CAMDEN TOWER TENNESSEE	RAWS	93
CHATTANOOGA AP	WBAN	93
MEMPHIS INTERNATIONAL AP	WBAN	93
SELMER	COOP	93
BROWNSVILLE	COOP	93
JACKSON MCKELLAR- SIPES AP	WBAN	93

Coldest Stations (lowest min temp):

Station Name	Station Type	Lowest Temperature (F)
ARDMORE	COOP	27
MT LECONTE	COOP	29
ONEIDA	COOP	31
GATLINBURG 2 SW	COOP	32
NEWCOMB	COOP	32
ROAN MOUNTAIN 3SW	COOP	32
CHRISTIANA 5W	COOP	32
ELIZABETHTON	COOP	33
MANCHESTER #2	COOP	33
HENDERSON 4 W	COOP	33

Warmest Stations (highest mean temps):

Name	Station Type	Mean Temperature (F)
MEMPHIS INTERNATIONAL AP	WBAN	77.4
GERMANTOWN 4SE	COOP	76.7
MEMPHIS WFO	WBAN	75.8
SHILOH NMP TENNESSEE	RAWS	75.8
BROWNSVILLE	COOP	75.7
NASHVILLE INTL AP	WBAN	75.5
WATERTOWN PUB SAFETY COMPLEX	COOP	75.5
JACKSON MCKELLAR- SIPES AP	WBAN	75.2
CAMDEN TOWER TENNESSEE	RAWS	75.1
UT MARTIN BRANCH EXP	COOP	75.1

Coolest Stations (lowest mean temps):

Station Name	Station Type	Mean Temperature (F)
MT LECONTE	COOP	53.6
NEWFOUND GAP	COOP	61.5
ROAN MOUNTAIN 3SW	COOP	64
CHEROKEE TENNESSEE	RAWS	66.4
GATLINBURG 2 SW	COOP	67.4
COALMONT	COOP	67.6
TOWNSEND 5S	COOP	67.7
TAZEWELL	COOP	67.8
CROSSVILLE 7 NW	WBAN	68.2
ELIZABETHTON	COOP	68.3

Wettest Stations (highest rainfall totals):

Station Name	Station Type	Total Precipitation (in)
NEWFOUND GAP	COOP	10.17
DICKSON 12.7 NW	CoCoRaHS	9.82
LAFAYETTE	COOP	9.14
CLARKSVILLE 4.0 WNW	CoCoRaHS	8.92
VANLEER 2.8 SE	CoCoRaHS	8.85
MT LECONTE	COOP	8.64
COALMONT	COOP	8.63
BOLIVAR WATER WORKS	COOP	8.51
BENTON 2.3 ESE	CoCoRaHS	8.5
LEXINGTON	COOP	8.4

Driest Stations (lowest rainfall totals):

Station Name	Station Type	Total Precipitation (in)
OAKLAND 2.9 SSE	CoCoRaHS	1.23
LENOIR CITY	COOP	1.47
MURFREESBORO 3.2 WSW	CoCoRaHS	1.47
LEBANON 10.5 ENE	CoCoRaHS	1.61
CORNERVILLE 10.5 SSE	CoCoRaHS	1.74
MORRISON 1.9 SSW	CoCoRaHS	1.78
PULASKI 7.9 ENE	CoCoRaHS	1.88
WOODBURY 1 WNW	COOP	1.9
GREEN HILL 3.1 NNE	CoCoRaHS	2
FRIENDSVILLE 3.6 NW	CoCoRaHS	2.05

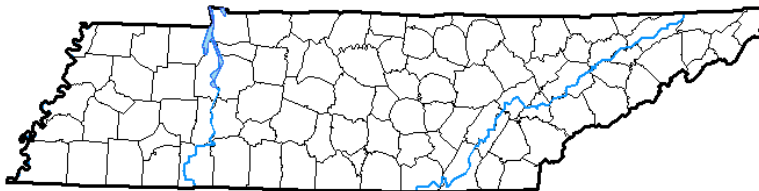
Drought Monitor:

Although dry conditions were observed for most of the month, and conditions were closely monitored, no drought was declared in Tennessee during the month of May.





U.S. Drought Monitor Tennessee

May 29, 2018
(Released Thursday, May 31, 2018)
Valid 8 a.m. EDT

Author:
Anthony Artusa
NOAA/NWS/NCEP/CPC



Intensity:

-  D0 Abnormally Dry
-  D1 Moderate Drought
-  D2 Severe Drought
-  D3 Extreme Drought
-  D4 Exceptional Drought

The Drought Monitor focuses on broad-scale conditions. Local conditions may vary. See accompanying text summary for forecast statements.

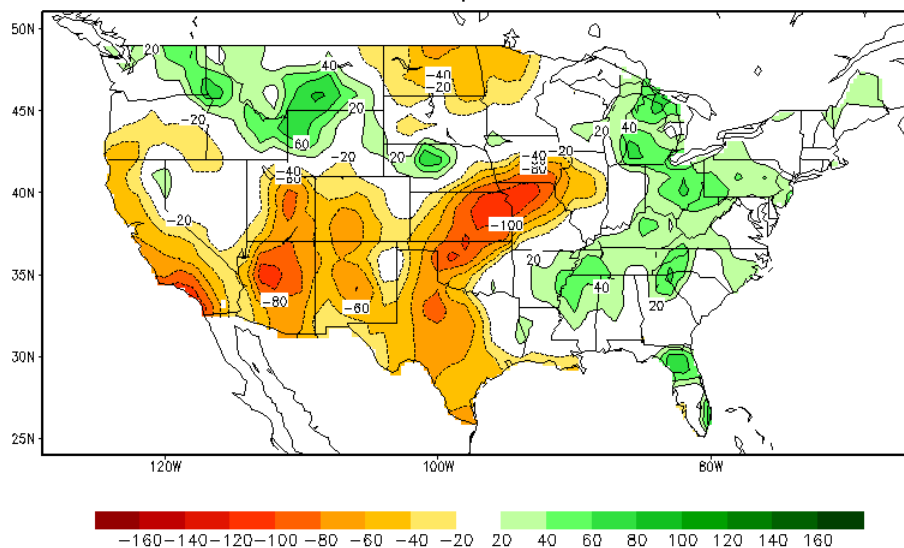


<http://droughtmonitor.unl.edu/>

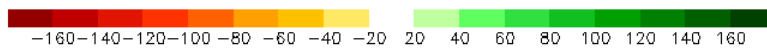
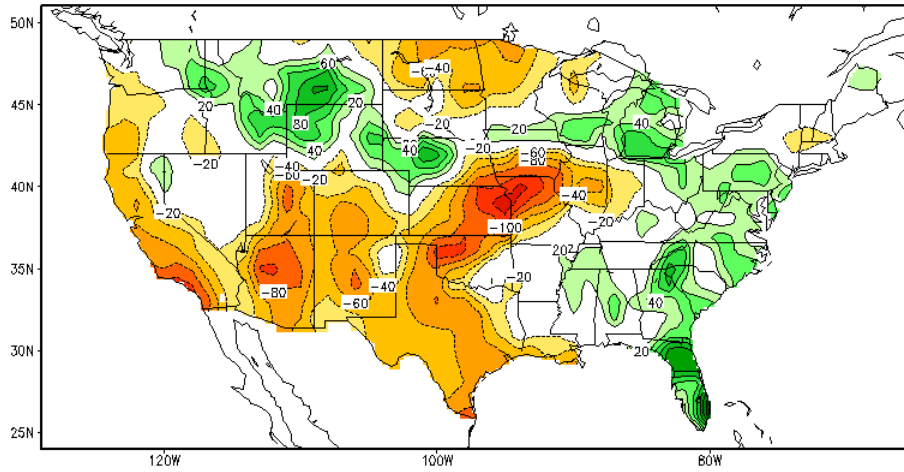
Soil Moisture:

Averaging for the entire month of May, soil moisture anomalies were positive, indicating slightly above normal moisture (20-40 mm). However, a major drying trend took place from the end of April throughout May, with soil moisture anomalies dropping 40-70mm across most of the state, the exception being in the eastern-most portion of the state which saw a small increase in soil moisture anomalies over the month.

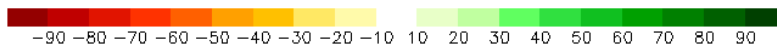
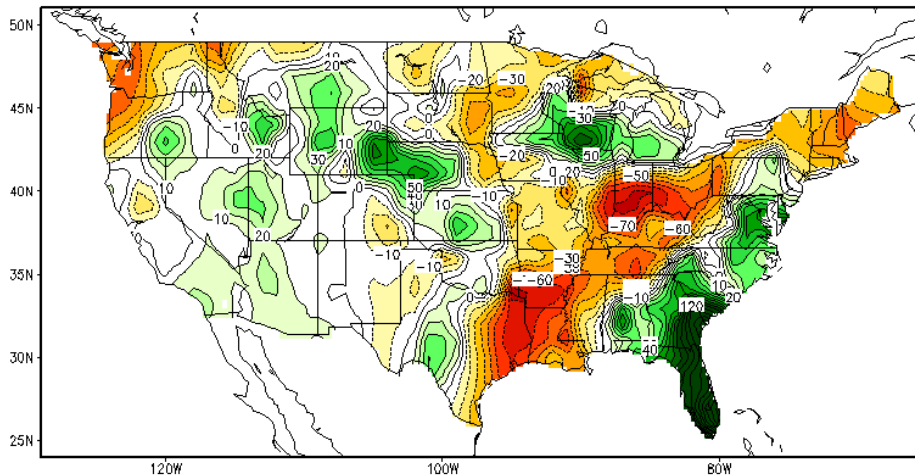
Calculated Soil Moisture Anomaly (mm)
MAY, 2018



Calculated Soil Moisture Anomaly (mm)
MAY 30, 2018



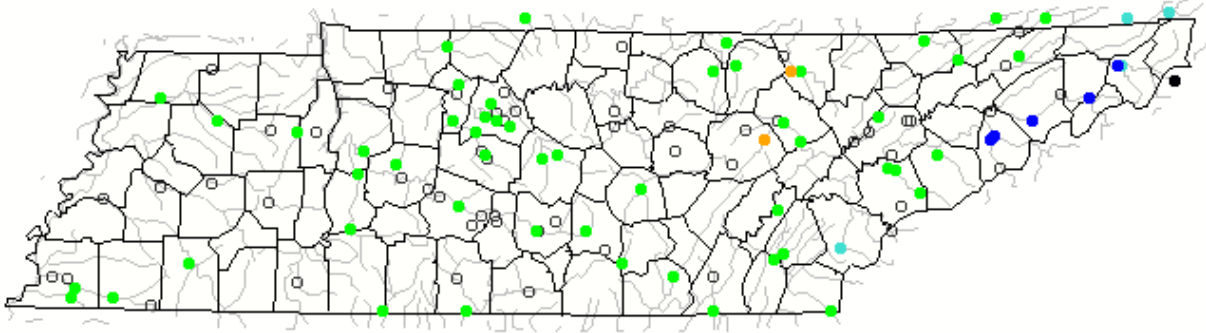
Calculated Soil Moisture Anomaly Change
MAY 31, 2018 from APR.30



Streamflow:

Most streams in the state were within the normal range of streamflow compared to historical levels, with rivers in the northeast part of the state flowing above, to much above normal levels due to rainfall from Alberto at the end of the month. Two stations in climate division 2 recorded below normal flow for the month (this was in the area where the driest conditions occurred).

May 2018



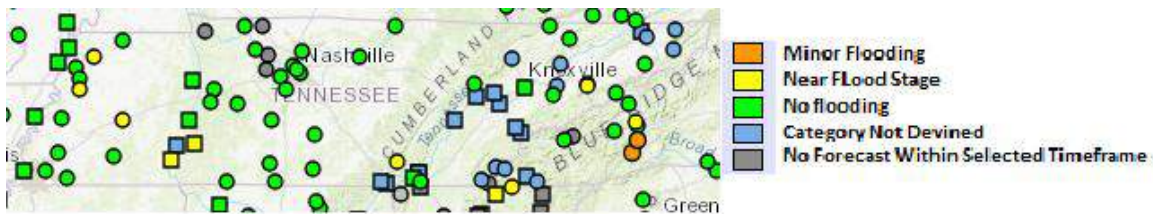
Search USGS streamgauge

Choose a data retrieval option and select a location on the map

- List of all stations
 Single station
 Nearest stations
 Peak flow

Explanation - Percentile classes							
Low	<10	10-24	25-75	76-90	>90	High	Not-ranked
	Much below normal	Below normal	Normal	Above normal	Much above normal		

At the end of the month, several streams were near flood stage due to heavy rains from Alberto, and are forecasted to remain so. However, no streams were forecasted to enter flood stage in the next 15 days.

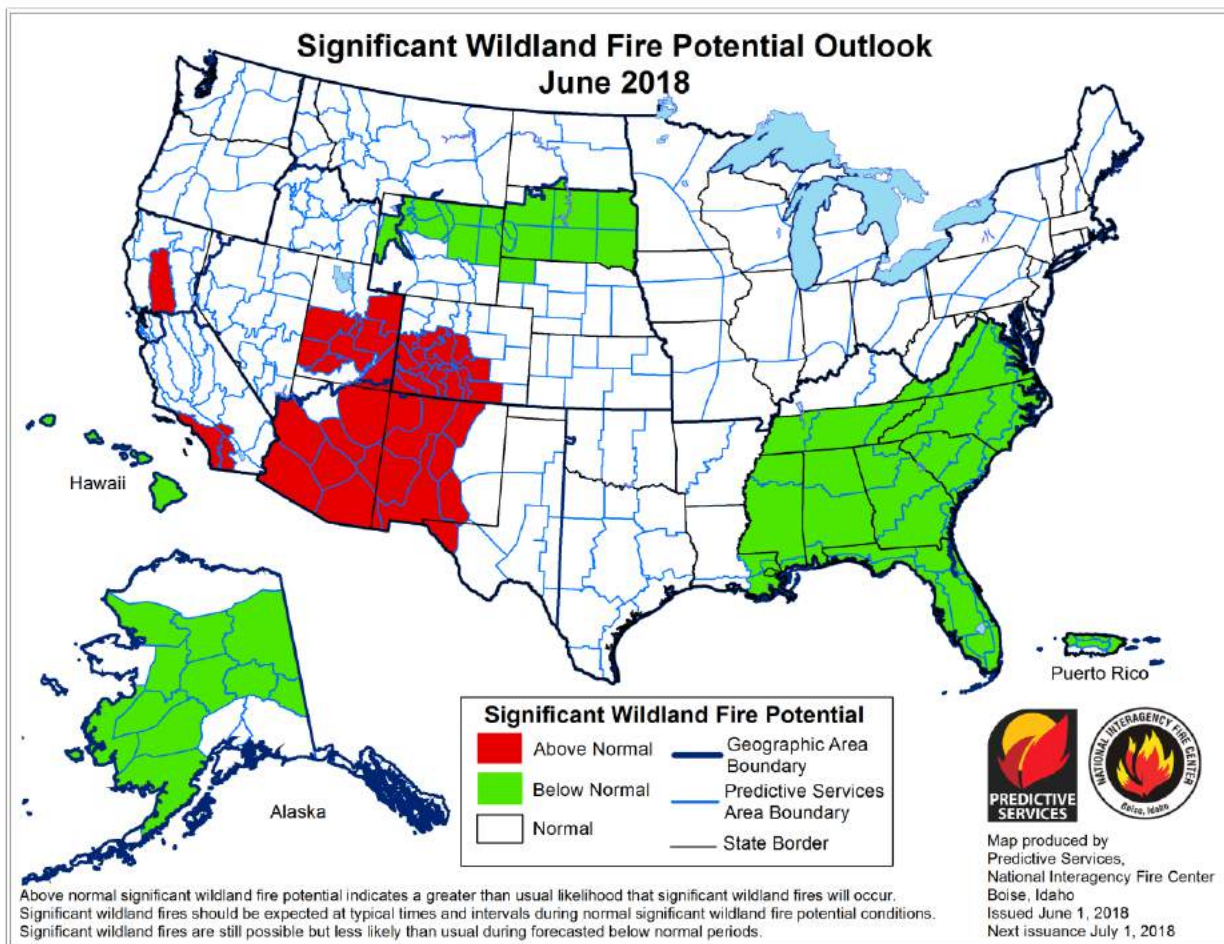


Miscellaneous:

Crop Conditions from USDA: The uneven distribution of rainfall was a problem for agricultural concerns, with too much rain in some parts of the state keeping farmers out of the fields, and too little rain in other parts of the state beginning to impact crop production during the crucial month of May. Hay producers reported a substantial drop in quality and yields from previous years. Unseasonably high temperatures placed a great deal of stress on cattle and other livestock. The table below shows crop progress, and conditions for the state as of May 27th.

CROP PROGRESS					CONDITION					
Crop	This Week	Last Week	2017	5 Year Avg.	Item	Very Poor	Poor	Fair	Good	Excellent
	Percent					Percent				
Corn - Planted	97	94	97	96	Corn	1	2	18	60	19
Corn - Emerged	89	79	89	87	Pasture	1	6	28	55	10
Cotton - Planted	88	75	87	74	Winter Wheat	1	3	26	55	15
Cotton - Squaring	1	N/A	2	1						
Soybeans - Planted	63	50	51	44						
Soybeans - Emerged	39	25	27	24						
Winter Wheat - Headed	98	96	N/A	N/A						
Winter Wheat - Coloring	73	28	69	N/A						
Hay First Cutting	39	18	N/A	N/A						

Fire Danger: Wildfire outlook for June from the National Interagency Fire Center indicating below normal chances for significant wildland fires.



Storm of the Month:

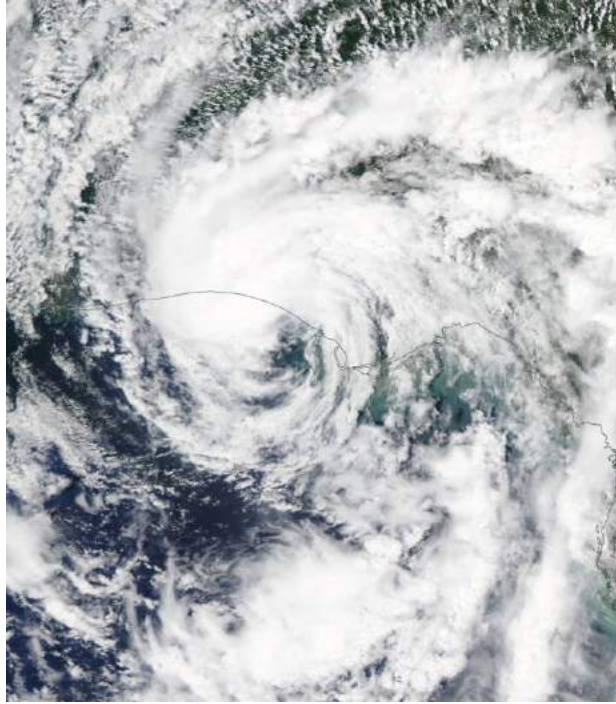
The storm of the month for May, due mainly to its unusual timing, and strength, would have to be Subtropical Storm/Tropical Depression Alberto. Alberto became the first named Atlantic storm of 2018 on May 25th. Strong wind shear meant that most of the convection was far to the east of the center, and it was deemed a sub-tropical storm. As Alberto moved into the Gulf of Mexico shear decreased, but the storm ingested dry air that kept it from taking on full tropical characteristics before making landfall in the Panhandle of Florida on the 28th.

After landfall, Alberto rapidly made its way northward through Alabama, and then into Tennessee on the afternoon of the 29th. While in Tennessee, Alberto transitioned from a subtropical depression into a tropical depression, with symmetrical rain and cloud bands, and an entirely warm core. By midnight the center of circulation had moved northward into Kentucky, before continuing on through Indiana and Michigan, narrowly missing making a landfall on Lake Michigan! Alberto then transitioned to a post tropical cyclone in southern Ontario.

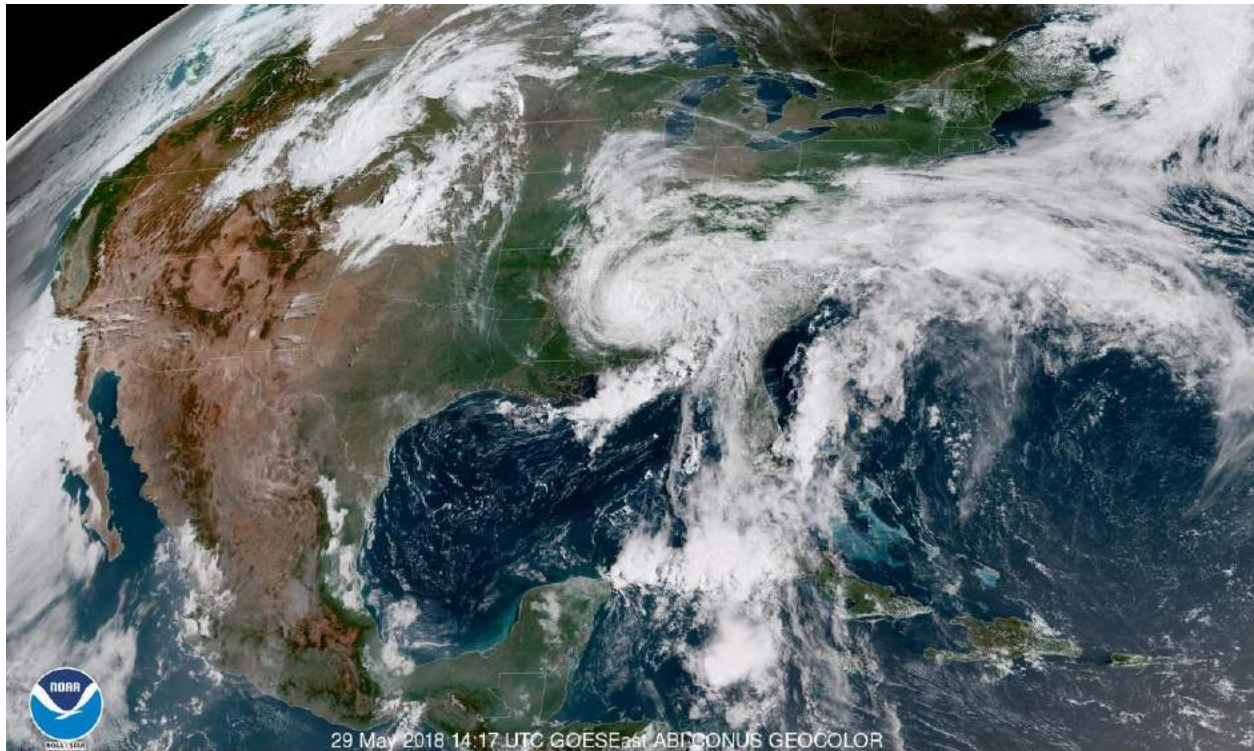
While only a couple wind damage reports resulted from Alberto in Tennessee, it did produce heavy rainfall near the track, as well as in the mountains in the eastern part of the state. The heaviest rains in the Appalachians were recorded on the eastern slopes of NC and VA, and several mud and landslides occurred, even destroying a house in Boone, NC, and closing sections of I-40. There were flash floods on some Tennessee rivers, especially the French Broad and Nolichucky rivers, which have their headwaters in western North Carolina. Flooding on the Nolichucky River caused road closures in Unicoi and Washington counties, and the evacuation of the Nolichucky Campground in Erwin, TN and Riverpark Campground in Jonesborough, TN.



Alberto Track History showing strength as a subtropical storm, and tropical depression. [Source: The Weather Channel]



Visible satellite imagery of subtropical storm Alberto at landfall on the Florida Panhandle. [Source: NASA MODIS imagery]



NOAA GOES-East Imagery showing Alberto as a depression as it nears southern Tennessee with a much more symmetrical tropical look. [Source: NOAA]



Nolichucky River near Erwin, Tennessee [Source: Facebook, Meteorologist Joe Reedy]



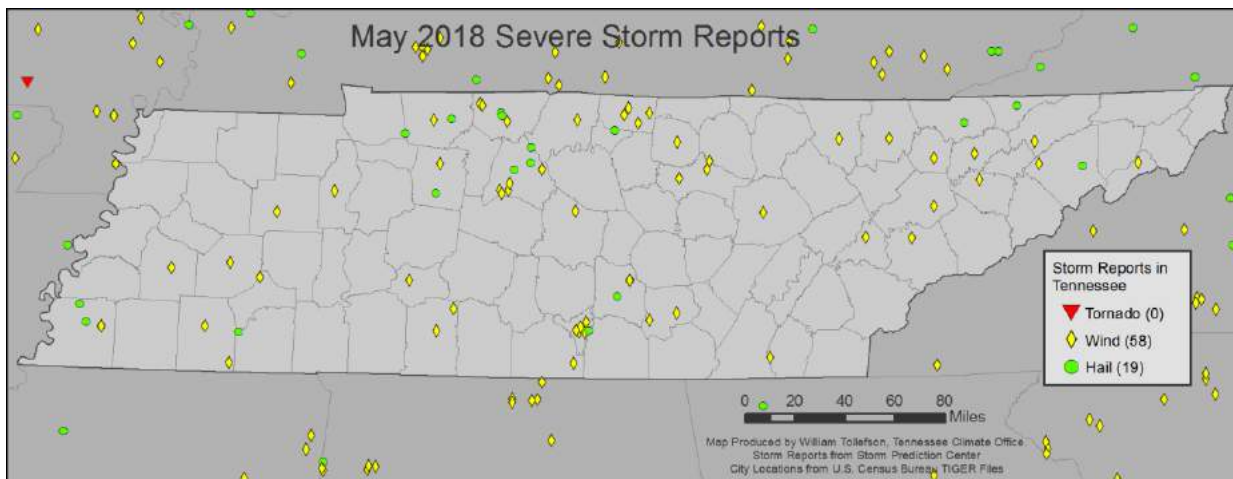
Nolichucky River inundates Nolichucky Campground near Erwin, Tennessee [Source: Facebook, USA Raft]

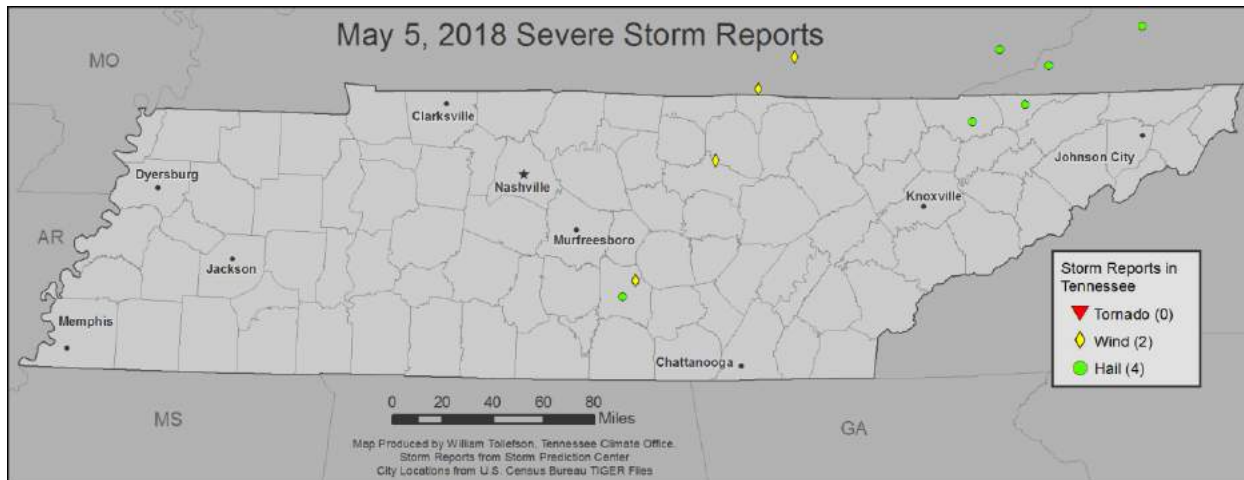


Nolichucky River inundates Riverpark Campground near Erwin, Tennessee [Source: WJHL News]

Storm Reports:

During the month there were 58 reports of wind damage and 19 reports of hail 1" or larger, but no tornado reports in the state. The two largest storm events occurred on the 20th and 31st of the month with 29 and 19 severe weather reports on those respective dates.



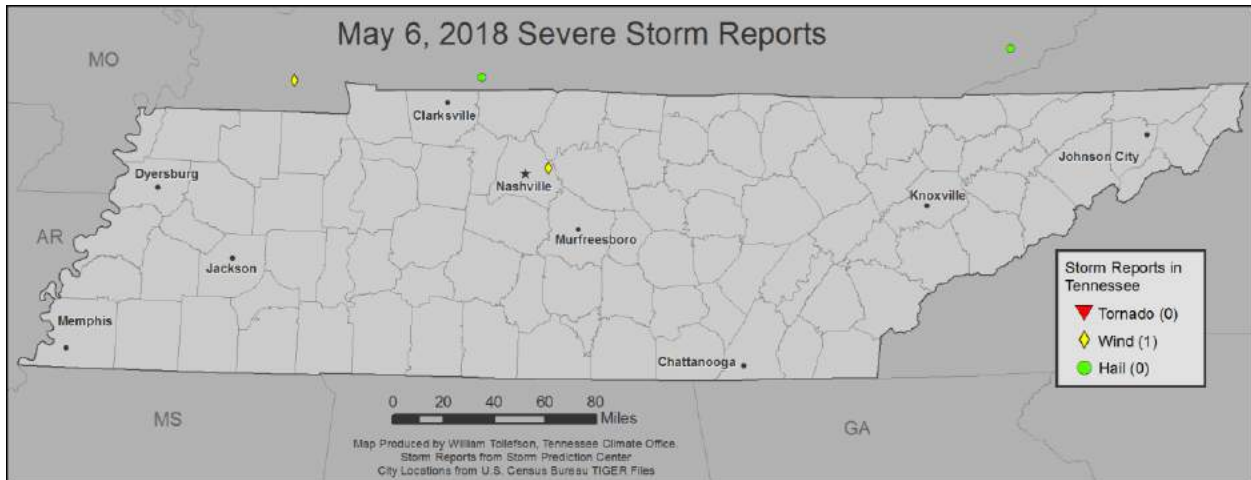


May 5th Wind Reports:

Time	Speed	Location	County	Lat	Lon	Comments
17:40	UNK	SUMMITVILLE	COFFEE	35.56	-85.99	COFFEE COUNTY HIGHWAY DEPARTMENT REPORTED SEVERAL TREES DOWN IN THE SUMMITVILLE AREA (OHX)
19:30	UNK	2 E BANGHAM VILLAGE	OVERTON	36.25	-85.42	CORRECTED TIME. TREES WERE BLOWN DOWN ON PARON ROAD AND REPORT OF WINDOWS BROKEN AND DEBRIS IN THE YARD OF A RESIDENCE AT 205 MELTON ROAD (OHX)

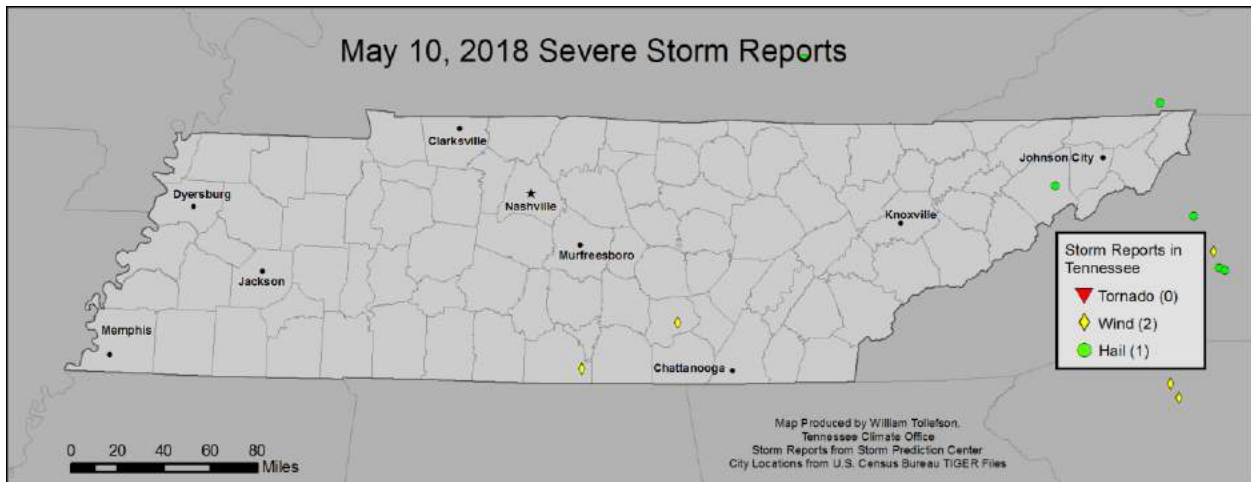
May 5th Hail Reports:

Time	Size	Location	County	Lat	Lon	Comments
17:15	1"	MANCHESTER	COFFEE	35.47	-86.08	FACEBOOK PHOTOS AND VIDEOS SHOWED HAIL RANGING FROM PEA UP TO QUARTER SIZE FELL IN MANCHESTER (OHX)
17:36	1.5"	SUMMITVILLE	COFFEE	35.56	-85.99	(OHX)
19:30	1.25"	1 SW TAZEVELL	CLAIBORNE	36.45	-83.59	1 1/4 SIZE HAIL IN NEW TAZWELL (MRX)
22:15	1"	SNEEDVILLE	HANCOCK	36.54	-83.21	QUATER SIZE HAIL REPORTED NEAR SNEEDVILLE (MRX)



May 6th Wind Reports:

Time	Speed	Location	County	Lat	Lon	Comments
22:00	UNK	HERMITAGE	DAVIDSON	36.20	-86.62	DELAYED REPORT. FACEBOOK PHOTOS SHOWED A TREE WAS SNAPPED AND CRUSHED A CARPORT IN HERMITAGE. (OHX)

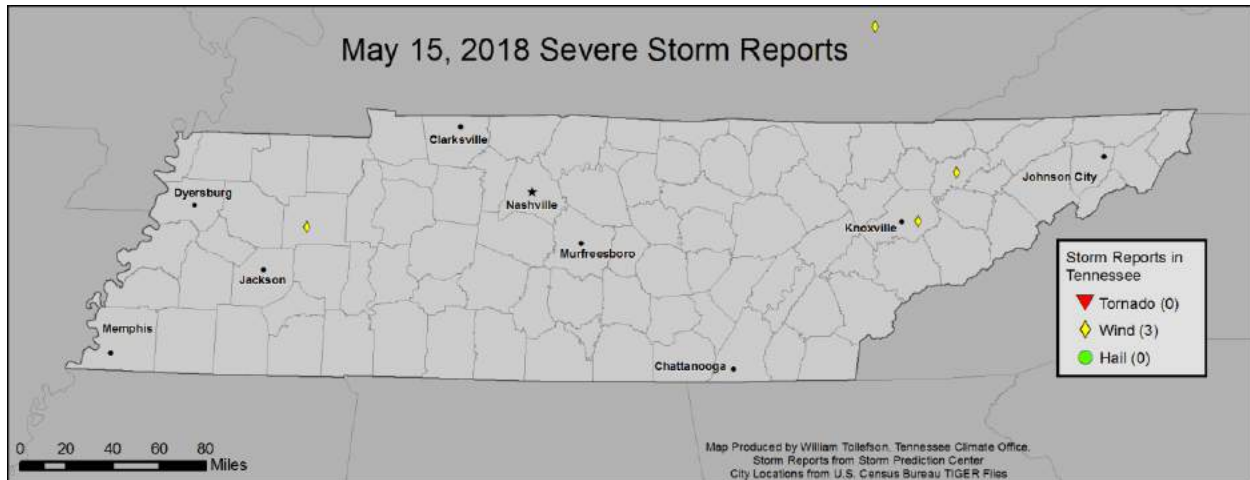


May 10th Wind Reports:

Time	Speed	Location	County	Lat	Lon	Comments
18:30	UNK	GRUETLI	GRUNDY	35.37	-85.66	LARGE TREE DOWN BLOCKING 50TH AVE. N (OHX)
19:30	UNK	7 WNW HUNTLAND	LINCOLN	35.08	-86.39	THUNDERSTORM OUTFLOW WINDS CAUSED DAMAGE TO THE ROOF OF A SUNROOM AND TO A CARPORT. A NUMBER OF TREES IN THE AREA WERE ALSO DOWNED. (HUN)

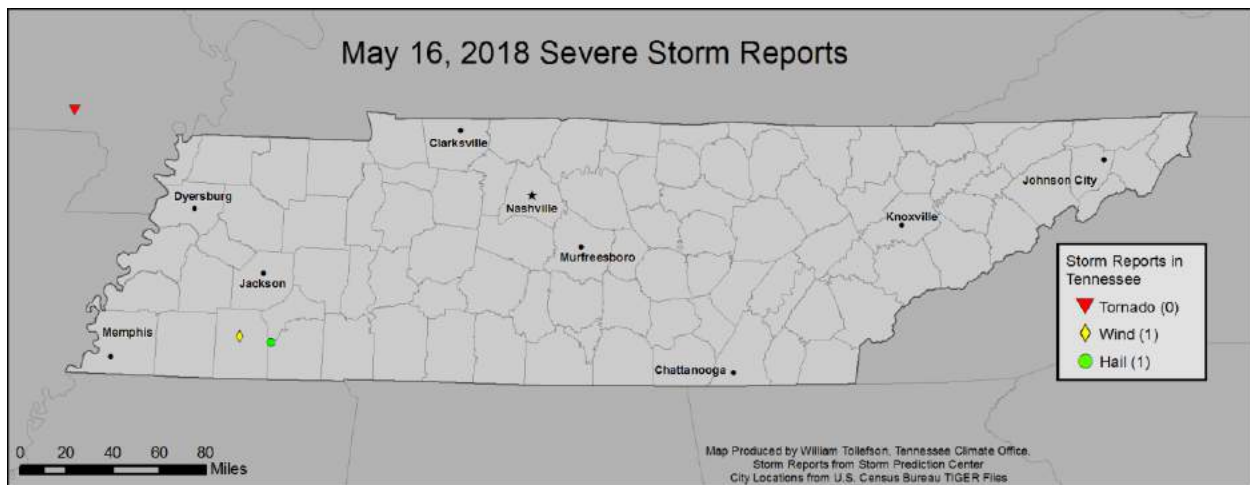
May 10th Hail Reports:

Time	Size	Location	County	Lat	Lon	Comments
00:20	1"	TUSCULUM	GREENE	36.18	-82.75	DIME TO QUARTER SIZE HAIL (MRX)



May 15th Wind Reports:

Time	Speed	Location	County	Lat	Lon	Comments
22:20	UNK	7 E KNOXVILLE	KNOX	35.97	-83.82	8 TREES DOWN ACROSS THE EASTERN HALF OF THE COUNTY. (MRX)
22:30	UNK	RUTLEDGE	GRAINGER	36.27	-83.52	SEVERAL TREES DOWN ACROSS THE COUNTY. (MRX)
01:05	UNK	8 SW HUNTINGDON	CARROLL	35.93	-88.51	A FEW TREES WERE KNOCKED DOWN ON PARKER STORE ROAD BETWEEN HUNTINGDON AND CEDAR GROVE. (MEG)

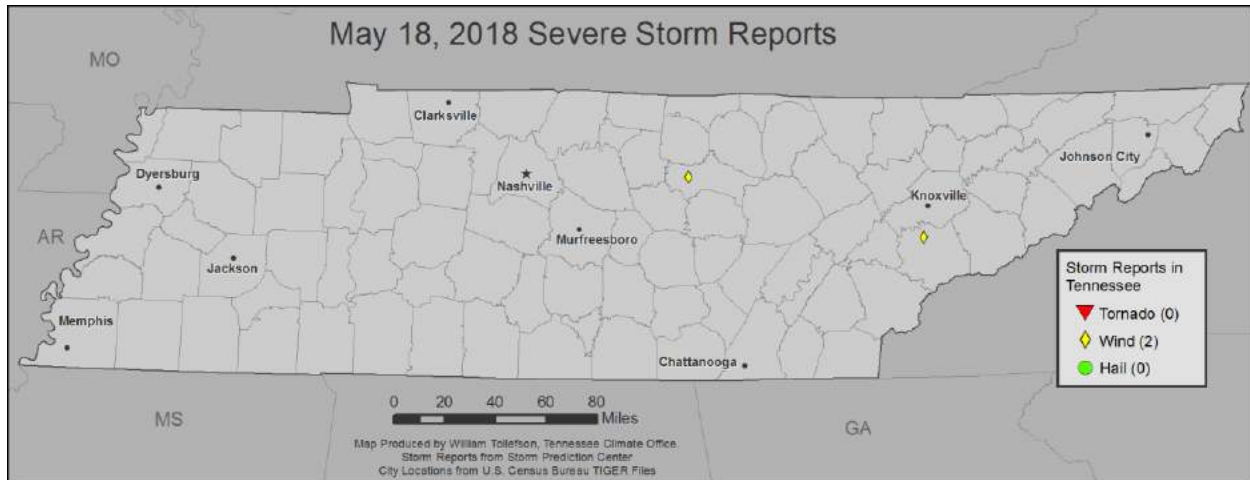


May 16th Wind Reports:

Time	Speed	Location	County	Lat	Lon	Comments
19:27	UNK	BOLIVAR	HARDEMAN	35.26	-89.00	TRAINED SPOTTERS REPORT TREES DOWN AND LARGE LIMBS NEAR HIGHWAY 64. (MEG)

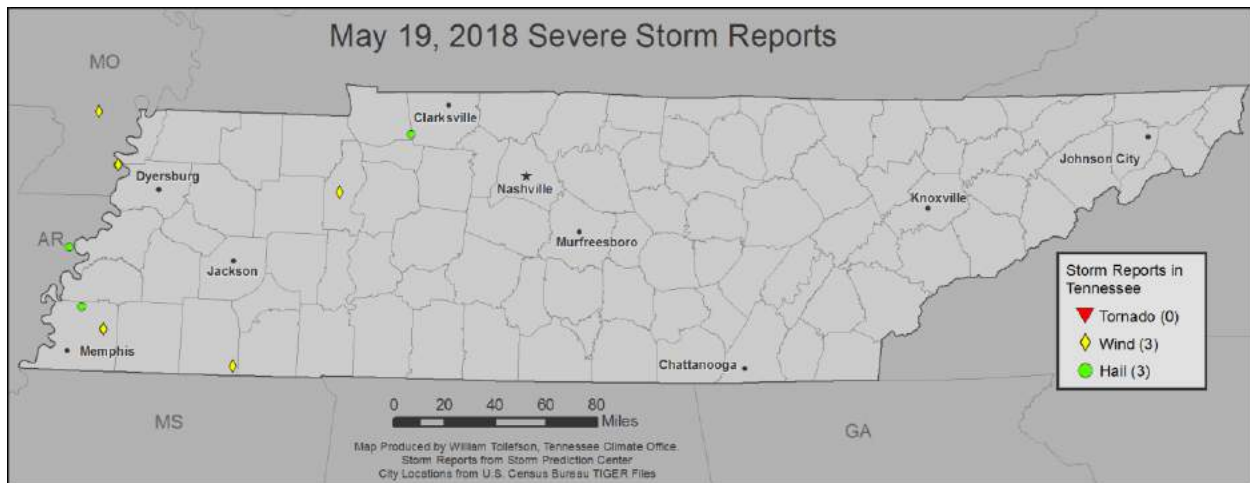
May 16th Hail Reports:

Time	Size	Location	County	Lat	Lon	Comments
19:55	1"	4 E HORNSBY	MCNAIRY	35.23	-88.76	(MEG)



May 18th Wind Reports:

Time	Speed	Location	County	Lat	Lon	Comments
21:48	UNK	ALCOA	BLOUNT	35.79	-83.98	SEVERAL TREES DOWN NEAR ALCOA, TENNESSEE. (MRX)
0:15	UNK	BAXTER	PUTNAM	36.15	-85.64	DUPLEX DAMAGED BY FALLEN TREE AT 218 SECOND AVE. SOUTH (OHX)



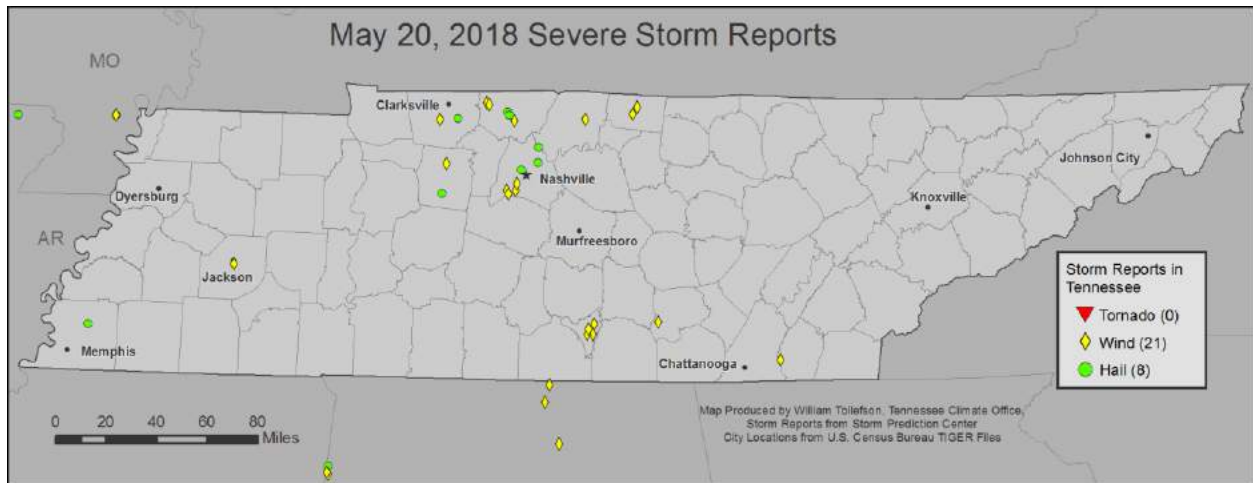
May 19th Wind Reports:

Time	Speed	Location	County	Lat	Lon	Comments
18:10	60mph	LAKELAND	SHELBY	35.24	-89.73	(MEG)
20:20	UNK	POCAHONTAS	HARDEMAN	35.05	-88.82	TREE LIMBS AND ONE SMALL TREE DOWN. (MEG)
22:05	UNK	E CAMDEN	BENTON	36.06	-88.1	WIND KNOCKED BOAT DOCK LOOSE AT BIRDSONG MARINA. (MEG)

May 19th Hail Reports:

Time	Size	Location	County	Lat	Lon	Comments
18:15	1"	LAKELAND	SHELBY	35.24	-89.73	(MEG)

23:12	1"	2 N MILLINGTON	SHELBY	35.36	-89.89	QUARTER SIZE HAIL ALONG HWY 51 NORTH OF MILLINGTON. (MEG)
11:30	1"	2 NW LINERS	MONTGOMERY	36.4	-87.6	REPORT OF 1 INCH HAIL ALONG HIGHWAY 149 IN MONTGOMERY COUNTY. (OHX)



May 20th Wind Reports:

Time	Speed	Location	County	Lat	Lon	Comments
19:18	UNK	10 SW ALTAMONT	GRUNDY	35.33	-85.85	CALLED GRUNDY COUNTY DISPATCH. SEVERAL TREES REPORTED DOWNED ACROSS WESTERN PORTIONS OF THE COUNTY WEST OF COALMONT NEAR THE GRUNDY/COFFEE COUNTY LINE. (OHX)
20:30	UNK	4 NE LYNCHBURG	MOORE	35.32	-86.3	EMA REPORTS TREES DOWN IN THE VICINITY OF FULKS HOLLOW RD AND HURRICANE CREEK. (HUN)
20:33	UNK	3 ESE LYNCHBURG	MOORE	35.26	-86.31	EMA REPORTS TREE DOWN ACROSS LOIS CREEK RD. (HUN)
20:33	UNK	2 S LYNCHBURG	MOORE	35.26	-86.35	EMA REPORTS TREE DOWN ACROSS ROAD ALONG NORMAN WISEMAN RD. (HUN)
20:33	UNK	1 ENE LYNCHBURG	MOORE	35.29	-86.34	EMA REPORTS MULTIPLE TREES DOWN IN THE VICINITY OF PLEASANT HILL RD AND EAST OF HWY 55. (HUN)
20:51	UNK	1 WSW MCDONALD	BRADLEY	35.11	-85	TREES DOWN ALONG HWY 64 NEAR HAMILTON COUNTY LINE. (MRX)

21:02	UNK	S JACKSON	MADISON	35.63	-88.83	TRAMPOLINE BLEW OVER POWER LINES AT HOME IN SOUTH JACKSON. (MEG)
21:05	UNK	S JACKSON	MADISON	35.63	-88.83	LARGE TREE BLEW OVER HOUSE ON MALESUS HEIGHTS DR. (MEG)
21:50	UNK	1 ESE ADAMS	ROBERTSON	36.58	-87.07	TREE DOWN AT THE INTERSECTION OF HWY 41 AND JOHNSON SPRING RD. (OHX)
22:00	UNK	1 ESE ADAMS	ROBERTSON	36.57	-87.05	TREE DOWN ON HWY 41N AT JOHNSON SPRINGS RD. (OHX)
22:12	UNK	1 W PERRY PARK	ROBERTSON	36.48	-86.87	PHOTO OF A TREE DOWN ON A CAR AT 408 CIRCLE DR IN SPRINGFIELD. TIME ESTIMATED BASED ON RADAR. (OHX)
22:13	UNK	1 S BELLE MEADE	DAVIDSON	36.08	-86.86	AMATEUR RADIO OPERATOR REPORTS NUMEROUS TREES DOWN IN THE BLACKBURN AVE AREA OF BELLE MEADE (OHX)
22:15	UNK	4 WSW BELLE MEADE	DAVIDSON	36.08	-86.92	A LARGE TREE SNAPPED AND FELL ON A HOUSE CAUSING ROOF DAMAGE ON CROSS TIMBERS DR. (OHX)
22:15	UNK	5 SW NASHVILLE	DAVIDSON	36.12	-86.85	NUMEROUS TREES BLOWN DOWN IN THE BELLE MEADE... GREEN HILLS AND BELLEVUE AREA. IN GREEN HILLS... TREES WERE BLOWN DOWN AT THE INTERSECTION OF ESTES RD AND WOODLAWN DR (OHX)
22:16	UNK	4 SW BELLE MEADE	DAVIDSON	36.06	-86.91	GAS STATION AWNING WAS DAMAGED AT THE INTERSECTION OF OLD HICKORY BLVD AND HWY 70. (OHX)
22:50	UNK	3 N CHARLOTTE	DICKSON	36.23	-87.35	TRAINED SPOTTER REPORTED TREES DOWN ON HWY 48. (OHX)
23:48	UNK	2 SSE ROCK BRIDGE	SUMNER	36.49	-86.37	RECEIVED A REPORT OF SEVERAL TREES AND POWERLINES DOWN. TIME ESTIMATED FROM RADAR. (OHX)
23:53	UNK	CUMBERLAND HEIGHTS	MONTGOMERY	36.48	-87.4	EMERGENCY MANAGER REPORTED SEVERAL LIMBS DOWN IN THE AREA OF BOBBY RD AND CUMBERLAND HEIGHTS. TIME IS ESTIMATED VIA RADAR. (OHX)

0:50	UNK	LAFAYETTE	MACON	36.52	-86.03	NUMEROUS TREES AND POWER LINES WERE BLOWN DOWN ACROSS WESTERN AND CENTRAL MACON COUNTY (OHX)
0:56	UNK	1 ENE WILLIAMS	MACON	36.56	-86	TREE DOWN ON CAVE HOLLOW RD EAST OF AKERSVILLE RD (OHX)
1:00	UNK	1 ENE WILLIAMS	MACON	36.56	-86	TREE DOWN ON CAVE HOLLOW RD EAST OF AKERSVILLE RD (OHX)

May 20th Hail Reports:

Time	Size	Location	County	Lat	Lon	Comments
20:56	1"	3 N BARTLETT	SHELBY	35.26	-89.84	NICKEL TO QUARTER SIZE HAIL. (MEG)
21:54	1"	DEERFIELD	MONTGOMERY	36.49	-87.27	EMA REPORTED 1 INCH HAIL ALONG HWY 12. TIME ESTIMATED VIA RADAR. (OHX)
22:12	1"	1 SSW EAST DICKSON	DICKSON	36.06	-87.38	MADE A COLD CALL AND FOUND A REPORT OF HAIL. (OHX)
22:12	1"	1 ENE BORDEAUX	DAVIDSON	36.2	-86.82	RECEIVED A TWITTER REPORT WITH A PICTURE OF 1 INCH HAIL. TIME ESTIMATED FROM RADAR. (OHX)
22:15	1"	3 NW SPRINGFIELD	ROBERTSON	36.53	-86.92	AMATEUR RADIO OPERATOR REPORTS QUARTER SIZE HAIL ON AIRPORT RD NEAR SPRINGFIELD. (OHX)
22:20	1"	7 NE NASHVILLE	DAVIDSON	36.24	-86.7	HAIL OF MARBLE TO QUARTER SIZE IN GOODLETTSVILLE. (OHX)
22:28	1"	2 WNW SPRINGFIELD	ROBERTSON	36.51	-86.91	TRAINED SPOTTER IN WEST SPRINGFIELD REPORTED PEA TO DIME SIZE HAIL FELL FOR 10 MINUTES STARTING AT 5:18PM THEN HAIL UP TO QUARTER SIZE FELL FOR ANOTHER 10 MINUTES ALONG (OHX)
23:00	1"	GOODLETTSVILLE	SUMNER	36.33	-86.7	RECEIVED A FACEBOOK REPORT OF 1 INCH HAIL WITH A PICTURE. (OHX)



May 25th Wind Reports:

Time	Speed	Location	County	Lat	Lon	Comments
21:12	UNK	WALTERHILL	RUTHERFORD	35.96	-86.38	A FEW TREES DOWN NEAR HIGHWAY 231 IN WALTERHILL. ONE HOUSE WAS DAMAGED BY A LARGE TREE. (OHX)



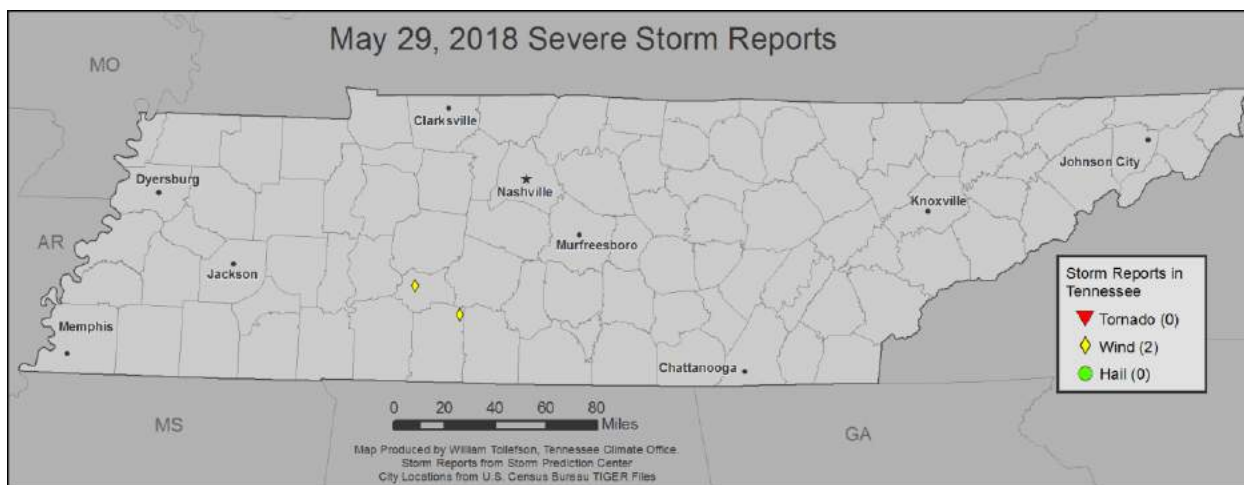
May 27th Wind Reports:

Time	Speed	Location	County	Lat	Lon	Comments
23:00	UNK	2 W LENOIR CITY	LOUDON	35.8	-84.31	SEVERAL TREES DOWN JUST WEST OF LENOIR CITY... TN. (MRX)



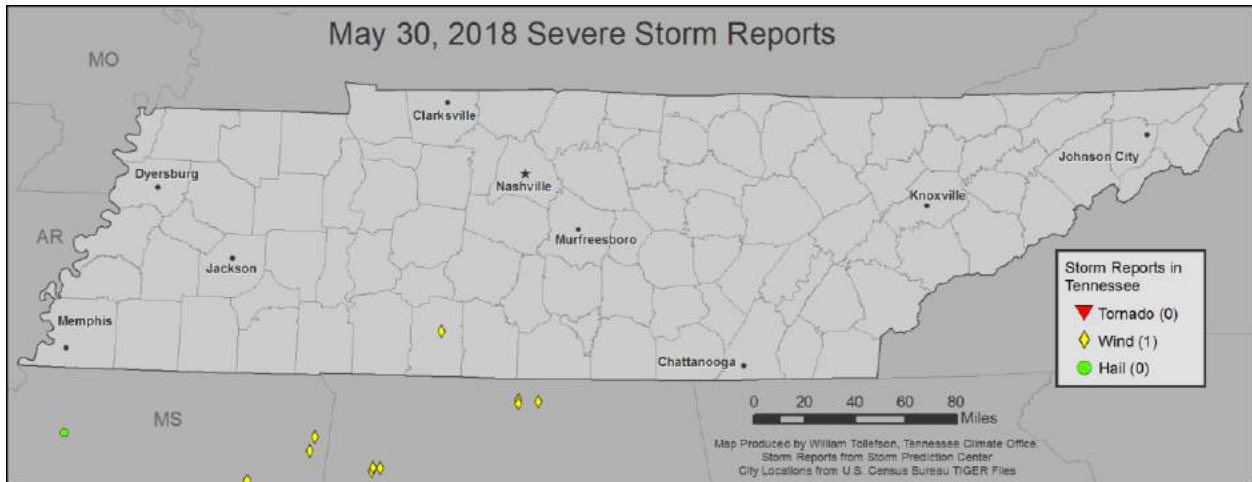
May 28th Wind Reports:

Time	Speed	Location	County	Lat	Lon	Comments
23:20	UNK	2 W MIFFLIN	CHESTER	35.55	-88.62	A FEW TREES DOWN ON PROPERTY SITUATED ON THE MADISON/CHESTER COUNTY LINE (MEG)



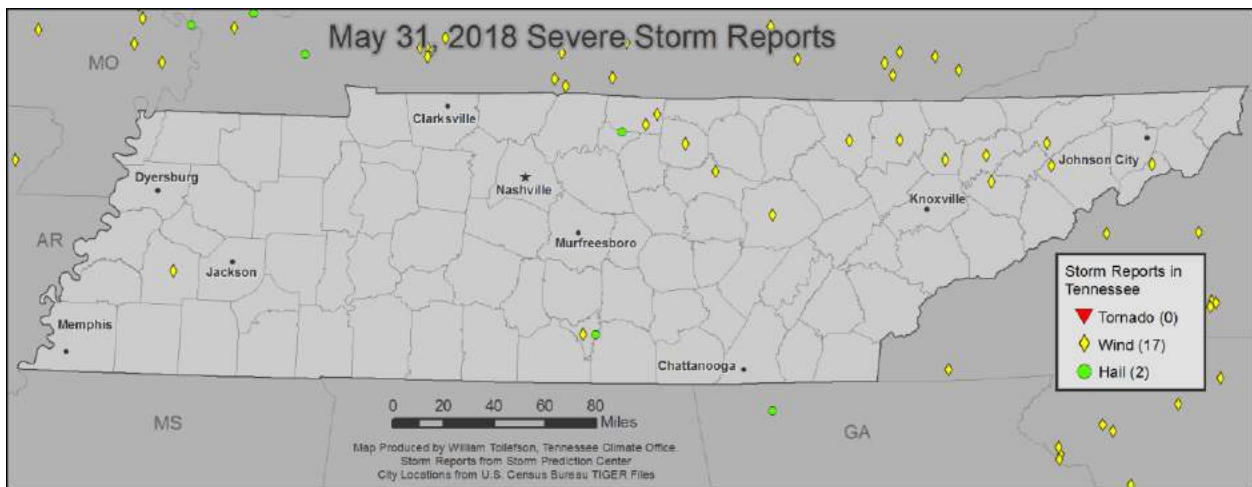
May 29th Wind Reports:

Time	Speed	Location	County	Lat	Lon	Comments
21:00	UNK	2 W JONESTOWN	LAWRENCE	35.39	-87.24	NUMEROUS TREES DOWN AND MINOR DAMAGE TO SEVERAL HOMES IN THE NEIGHBORHOOD OF DUGOUT ROAD AND GULLEY DRIVE. WITNESSES REPORTED A TRAMPOLINE BEING LIFTED AND MOVING SOUTH (OHX)
21:50	UNK	HOHENWALD	LEWIS	35.55	-87.56	REPORT OF TREES DOWN AND MINOR DAMAGE TO HOMES IN THE 600 BLOCK OF METAL FORD ROAD. (OHX)



May 30th Wind Reports:

Time	Speed	Location	County	Lat	Lon	Comments
22:12	UNK	1 WNW MEADOWVIEW	LAWRENCE	35.26	-87.36	RECEIVED REPORTS OF SEVERAL TREES DOWN ON POWER LINES IN DAVID CROCKETT STATE PARK... AND TREES DOWN IN THE CITY. TIME ESTIMATED FROM RADAR. (OHX)



May 31st Wind Reports:

Time	Speed	Location	County	Lat	Lon	Comments
13:19	UNK	2 SW LYNCHBURG	MOORE	35.27	-86.37	TREE WAS DOWNED ACROSS COUNTY HIGHWAY 50 NEAR HENSHAW ROAD. (HUN)
20:06	UNK	ALGOOD	PUTNAM	36.2	-85.44	RECEIVED A REPORT OF A TREE ON A HOUSE IN THE ALGOOD AREA. THE TREE TOOK SOME POWERLINES DOWN TOO. RECEIVED REPORTS OF ADDITIONAL TREES DOWN IN THE SAME AREA. (OHX)

20:54	UNK	2 WSW KIRBY	MACON	36.47	-85.93	TREE DOWN AT UNION CAMP AND ROYD ROAD. (OHX)
21:06	UNK	RED BOILING SPRINGS	MACON	36.53	-85.85	SEVERAL REPORTS OF TREES AND LIMBS DOWN. APPROXIMATELY 500 PEOPLE WITHOUT POWER. (OHX)
21:40	UNK	3 S HUNTSVILLE	SCOTT	36.37	-84.49	SEVERAL TREES DOWN SOUTH OF HUNTSVILLE... TN. (MRX)
22:00	UNK	CROSSVILLE	CUMBERLAND	35.95	-85.04	A TREE REPORTED DOWN NEAR LANTANA ROAD AND LAUREL CIRCLE. TIME ESTIMATED BY RADAR. (OHX)
22:25	UNK	LA FOLLETTE	CAMPBELL	36.37	-84.13	MULTIPLE REPORTS OF TREES DOWN ACROSS THE COUNTY. (MRX)
22:45	UNK	ST. CLAIR	HAWKINS	36.33	-83.09	SEVERAL TREES DOWN. (MRX)
23:05	UNK	MAYNARDVILLE	UNION	36.25	-83.81	TREES AND POWER LINES DOWN COUNTY-WIDE IN UNION COUNTY. (MRX)
23:15	UNK	RUTLEDGE	GRAINGER	36.27	-83.52	SEVERAL TREES AND POWER LINES DOWN NEAR THE LAKESHORE DR AREA. (MRX)
23:20	UNK	UNICOI	UNICOI	36.19	-82.35	A FEW TREES DOWN. (MRX)
23:30	UNK	MOHAWK	GREENE	36.2	-83.06	SEVERAL TREES DOWN. (MRX)
23:35	UNK	RUTLEDGE	GRAINGER	36.27	-83.52	SEVERAL TREES DOWN AND POWER LINES DOWN. (MRX)
23:46	UNK	JEFFERSON CITY	JEFFERSON	36.12	-83.49	TREES AND POWER LINES DOWN ACROSS THE COUNTY. (MRX)
0:05	UNK	GAINESBORO	JACKSON	36.36	-85.65	JACKSON COUNTY 911 CENTER REPORTED A FEW TREES AND POWER LINES DOWN WITH SOME ROADWAYS BLOCKED IN THE COUNTY ALONG WITH MINOR FLOODING. (OHX)
1:19	UNK	2 SW LYNCHBURG	MOORE	35.27	-86.37	CORRECTS PREVIOUS TSTM WND DMG REPORT FROM 2 SW LYNCHBURG. TREE WAS DOWNED ACROSS COUNTY HIGHWAY 50 NEAR HENSHAW ROAD. (HUN)
6:36	UNK	BROWNSVILLE	HAYWOOD	35.59	-89.25	STORM SPOTTER REPORTS TREES AND POWER LINES DOWN ACROSS ROADS COUNTYWIDE ACROSS HAYWOOD COUNTY. (MEG)

May 31st Hail Reports:

Time	Size	Location	County	Lat	Lon	Comments
23:36	1.5"	4 NE HARTSVILLE	TROUSDALE	36.43	-86.1	FACEBOOK PHOTOS SHOWED HAIL UP TO PING PONG BALL SIZE FELL ON MIDDLE FORK ROAD BETWEEN HIGHWAY 141 AND HIGHWAY 10. (OHX)
1:30	1"	5 ESE LYNCHBURG	FRANKLIN	35.27	-86.28	HAIL APPEARED FROM PICTURE TO BE IN THE DIME TO QUARTER IN SIZE. THANKS WFO OHX FOR FORWARDING THIS. (HUN)

Climate Prediction Center Outlook for June:

Climate Prediction Center outlooks for the month of June indicate that Tennessee will probably continue the pattern of above normal temperatures for the next month, and the eastern three-quarters of the state may experience above normal precipitation.

