

Committee for 125

Tennessee and ETSU Data



Change

Multiple Missteps



Tennessee Education Lottery Scholarships

Maximum Awards 2009 and thereafter

Tennessee *HOPE* Scholarship

Requirements: 3.0 GPA or 21 ACT

Max. Award: \$2,000 per term (\$6,000/yr)

***ASPIRE* Award**

Requirements: Hope Award and gross income \$36 k or less

Max. Award: \$2,750 per term (\$8,250/yr)

General Assembly Merit Scholarship (*Gams*)

Requirements: 3.75 GPA and 29 ACT

Max. Award: \$2,500 per term (\$7,500/yr)

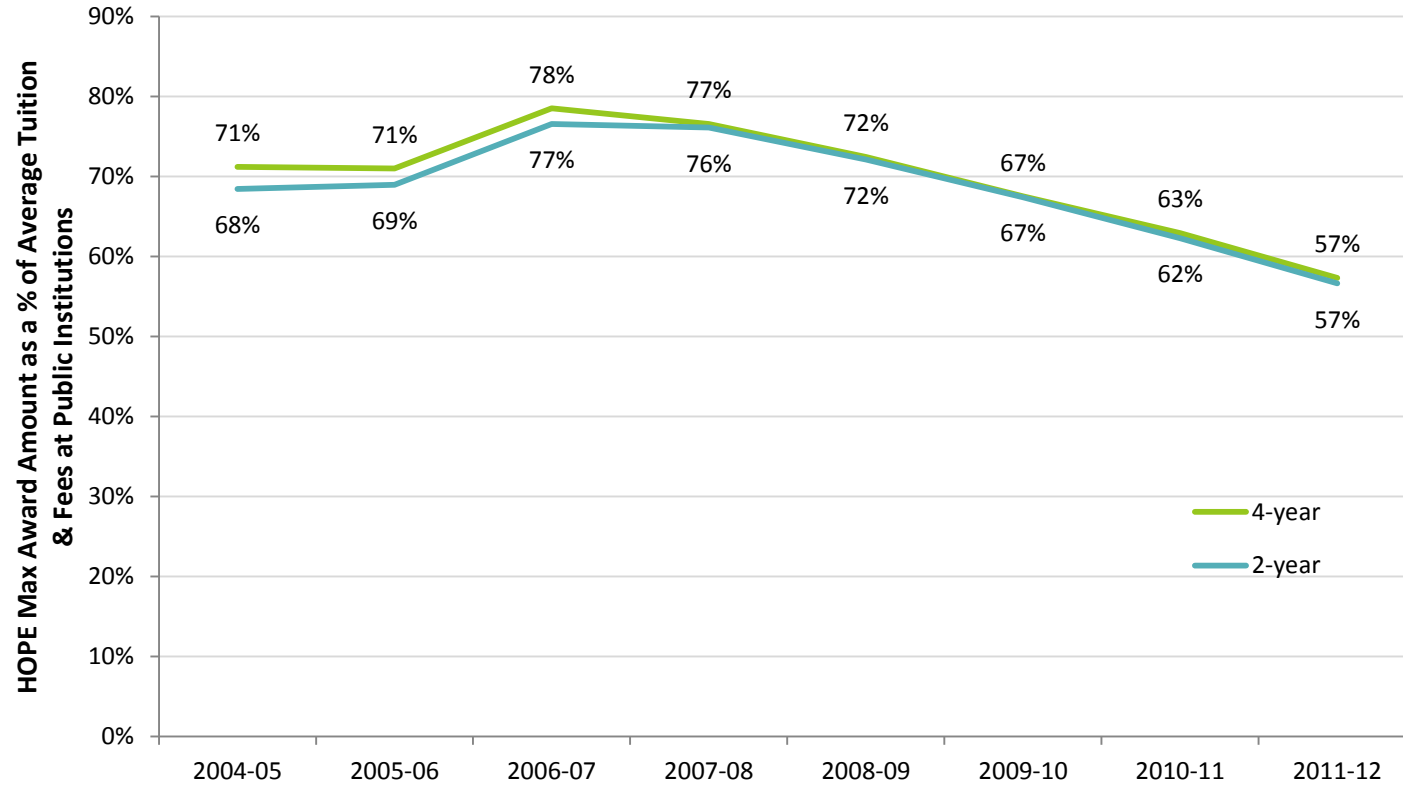
Tennessee Hope *ACCESS* Grant

Requirements: 2.75 GPA and 18-20 ACT, gross income \$36 k or less

Max. Award: \$1,375 per term (can move up after 24 hrs.)



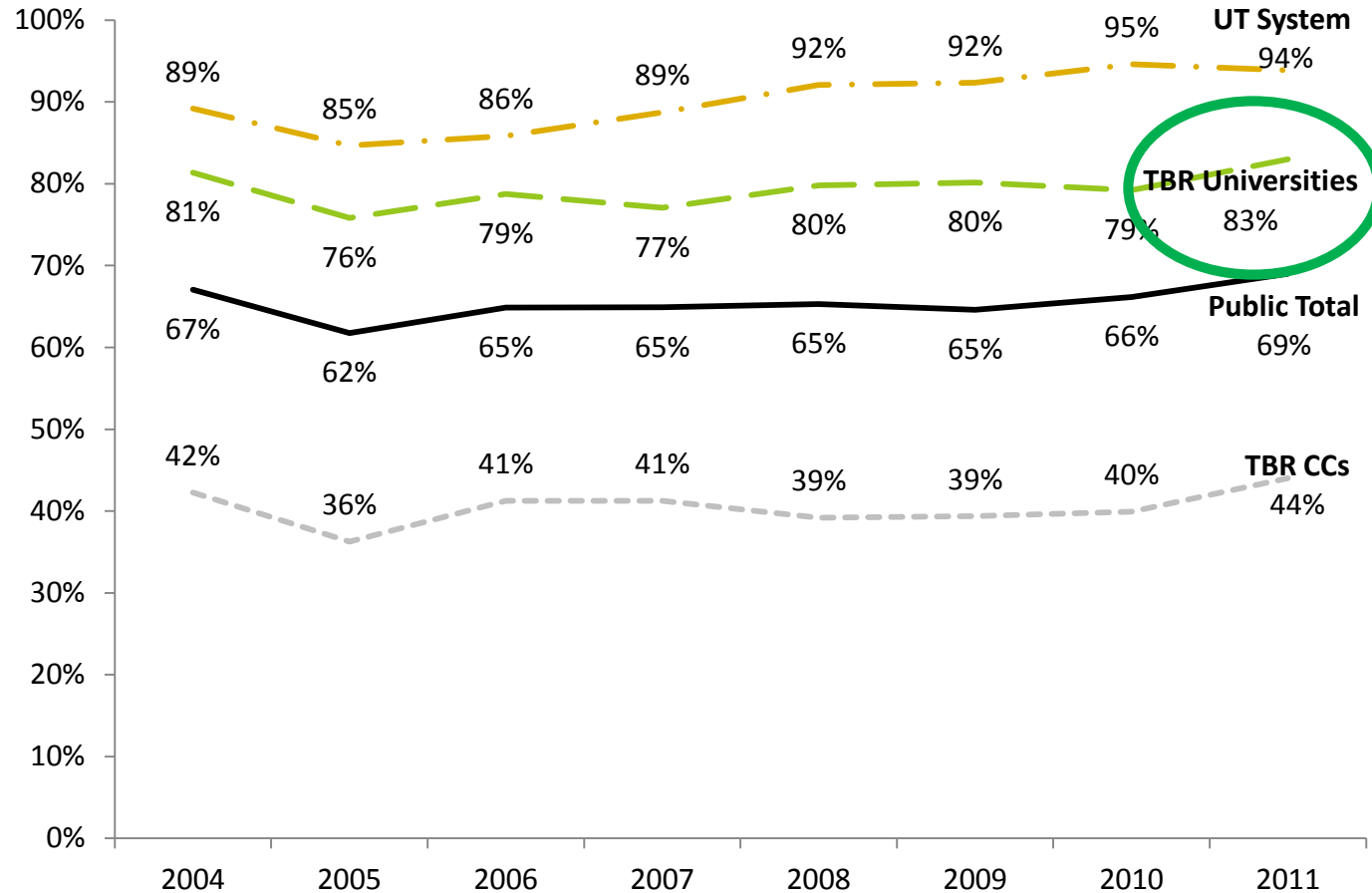
Maximum Award Amount of HOPE as a Percentage of Average Tuition and Fees at Public Institutions, 2004-05 through 2011-12



Source: *Tennessee Higher Education Commission*



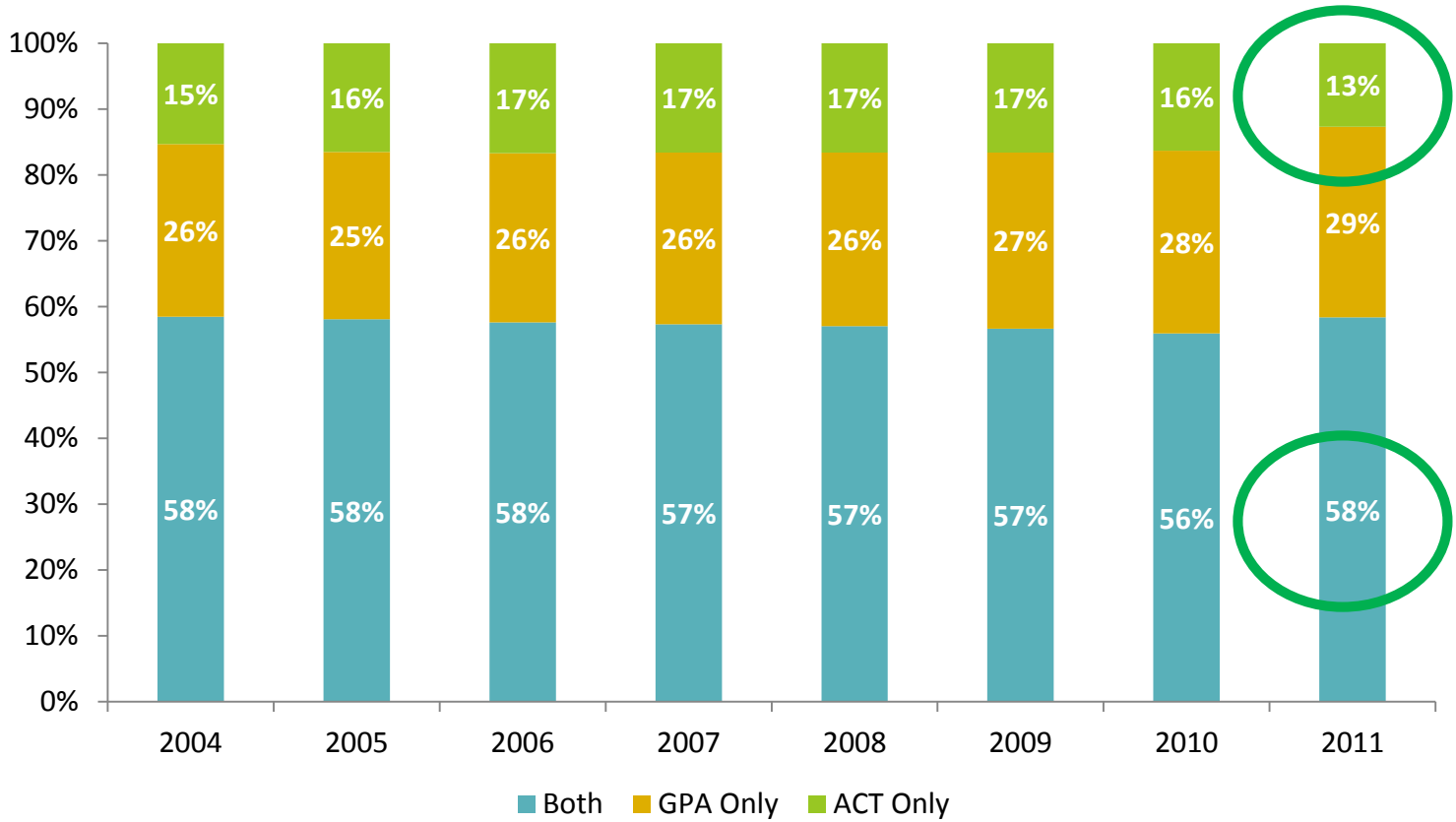
TELS Freshmen as a Percent of All First-time Freshmen by System, Fall 2004 through Fall 2011 *



Source: *Tennessee Higher Education Commission*



Qualifications Met by TELS First-time Freshmen (HOPE and ASPIRE Only), Fall 2004 through Fall 2011 *

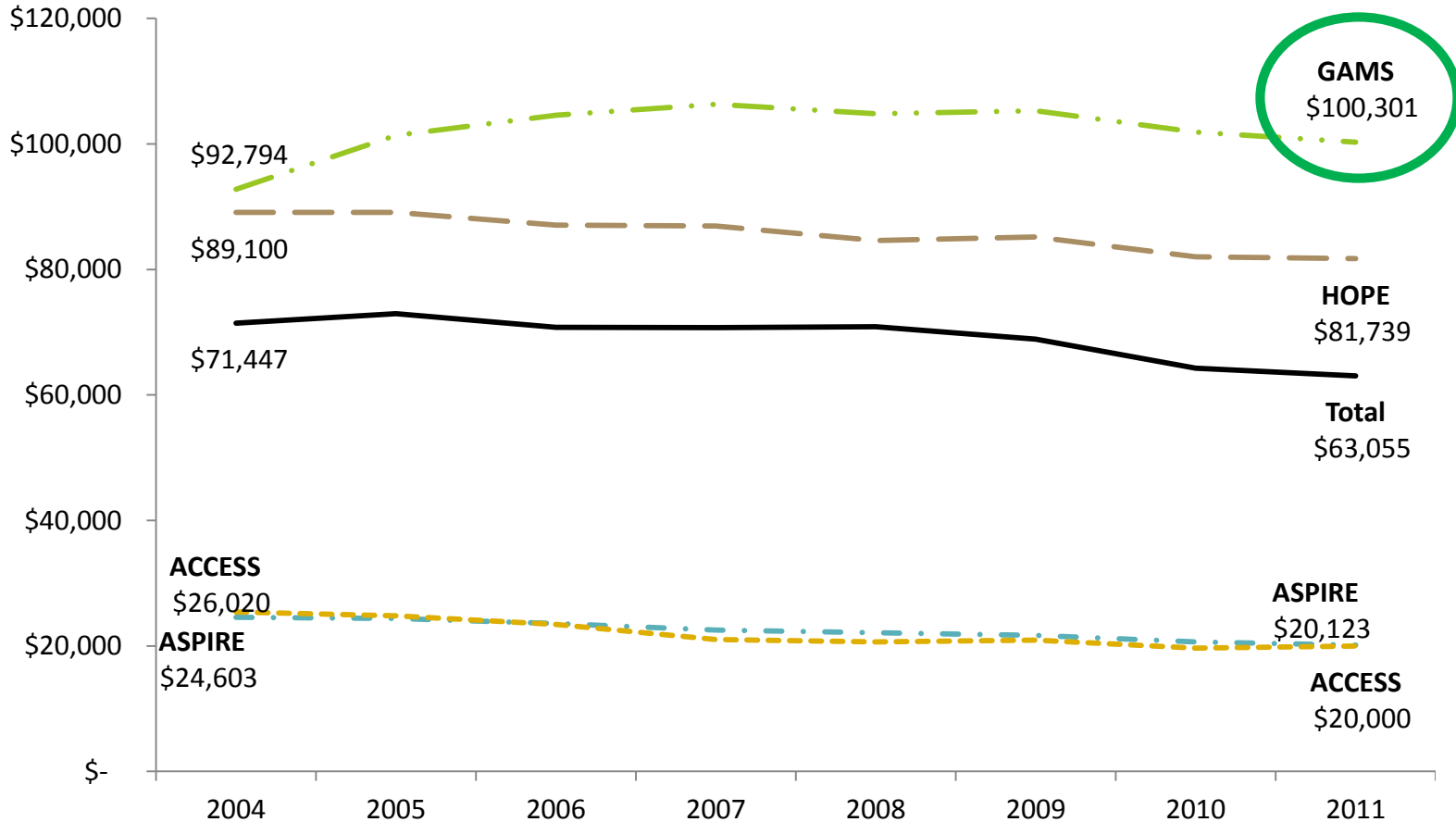


Source: *Tennessee Higher Education Commission*



Median Family Adjusted Gross Income

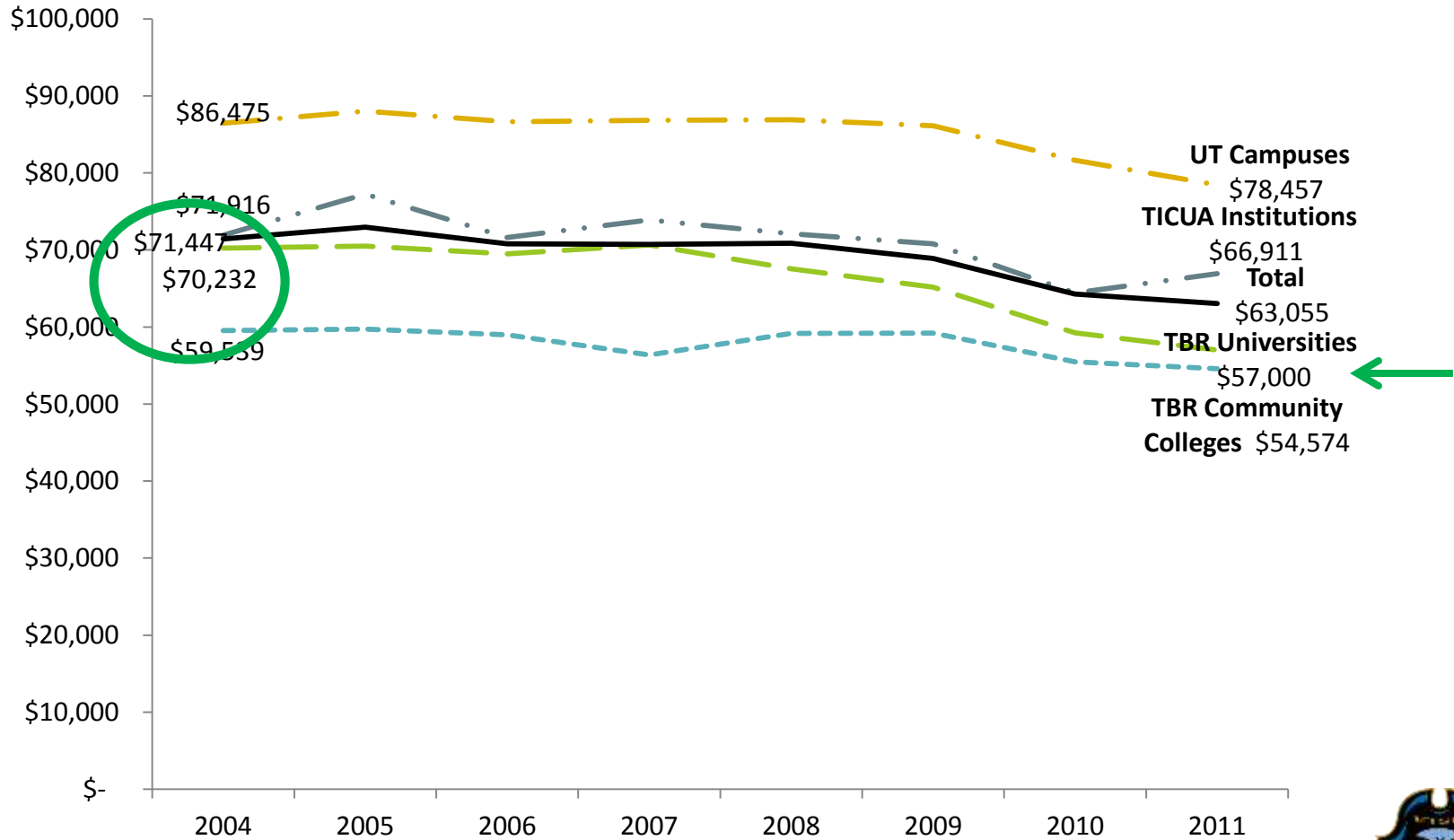
by Scholarship Type, TELS First-time Freshmen, Fall 2004 through Fall 2011



Source: *Tennessee Higher Education Commission*



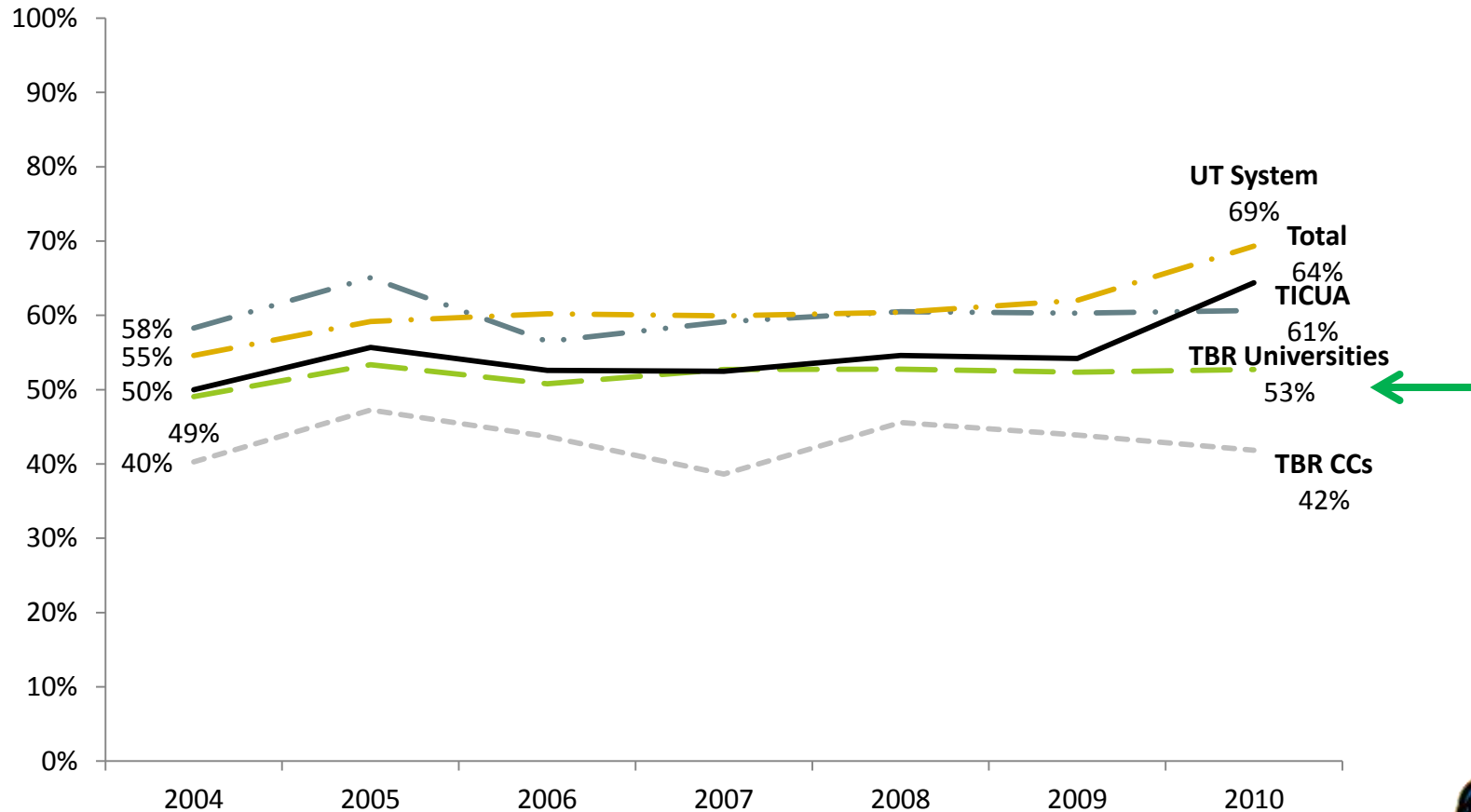
Median Family Adjusted Gross Income by System, TELS First-time Freshmen, Fall 2004 through Fall 2011



Source: *Tennessee Higher Education Commission*



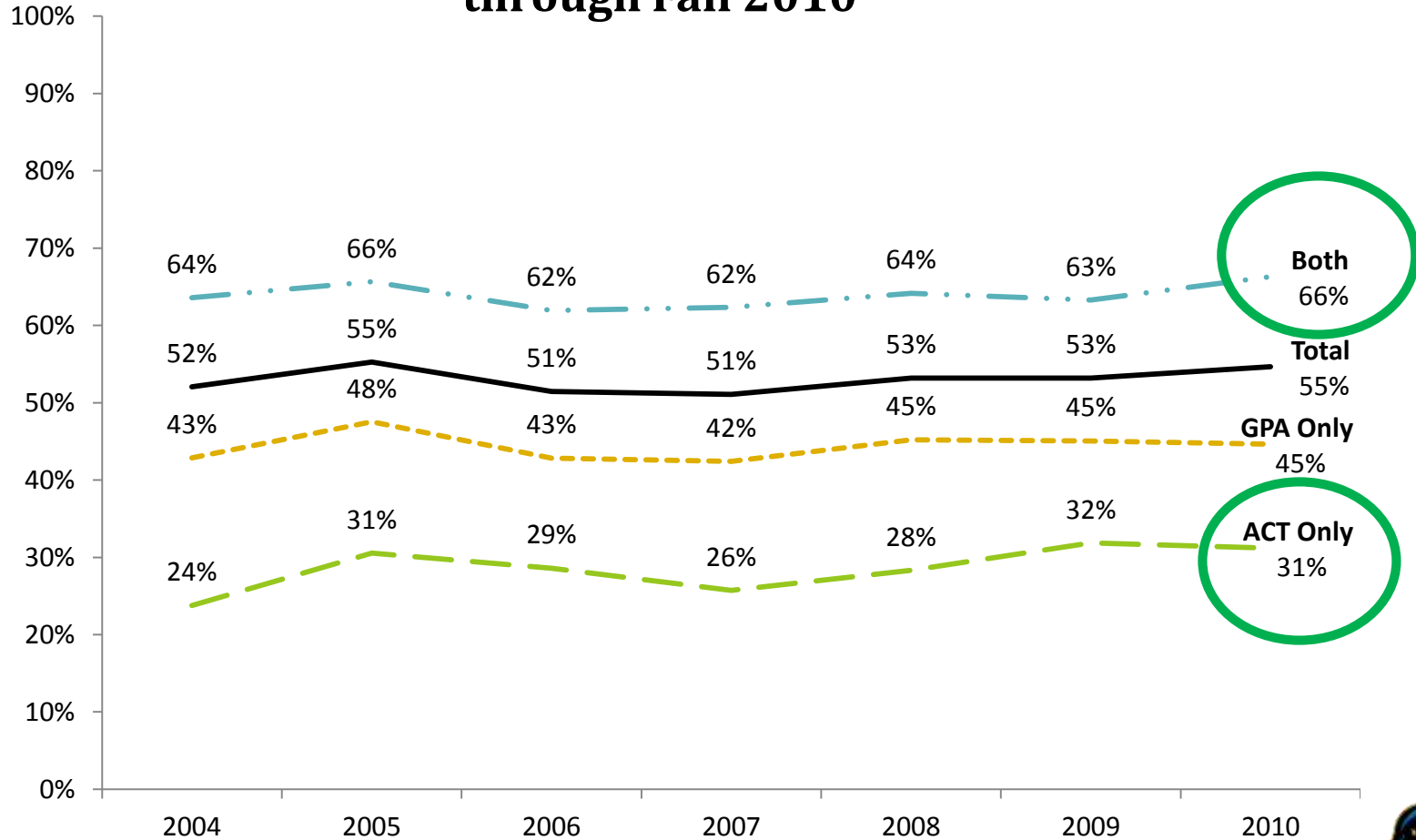
One-year Renewal Rate by System, TELS First-time Freshman, Fall 2004 through Fall 2010 *



Source: *Tennessee Higher Education Commission*



One-year Renewal Rate by **Qualifications Met** (HOPE and ASPIRE only) TELS First-time Freshman, Fall 2004 through Fall 2010 *

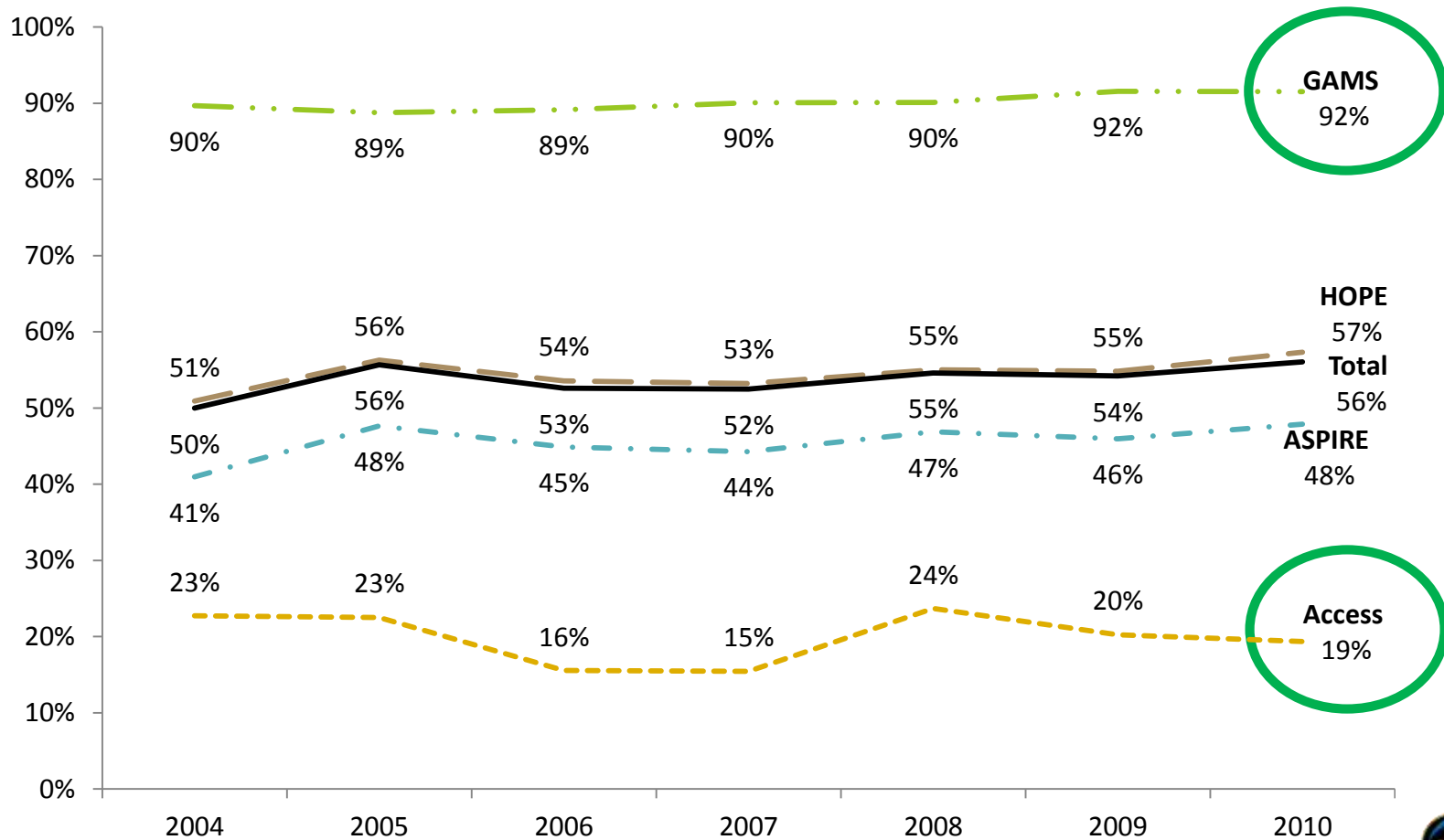


Source: *Tennessee Higher Education Commission*



One-year Renewal Rate by **Scholarship** Type

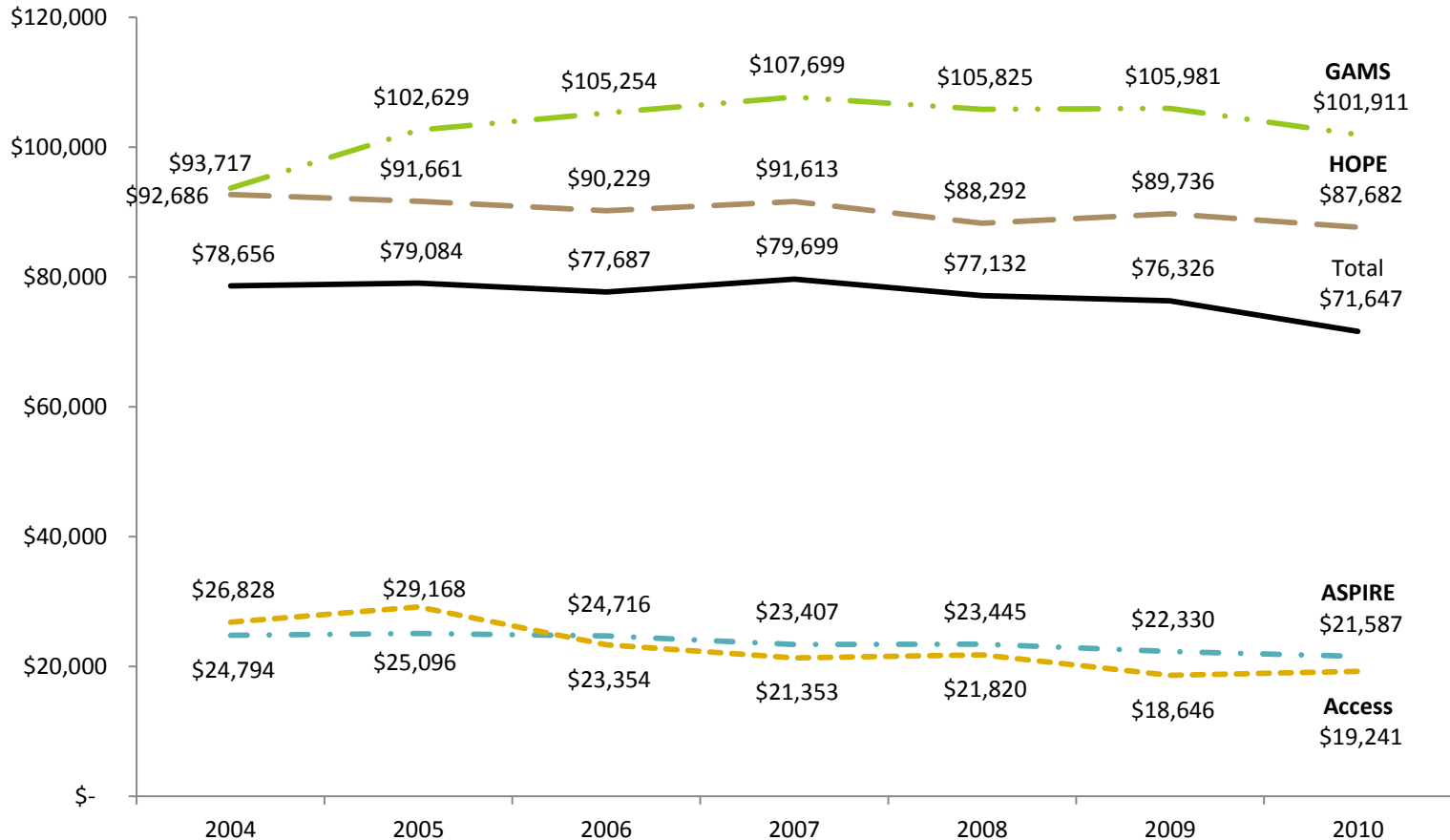
TELS First-time Freshman, Fall 2004 through Fall 2010 *



Source: *Tennessee Higher Education Commission*



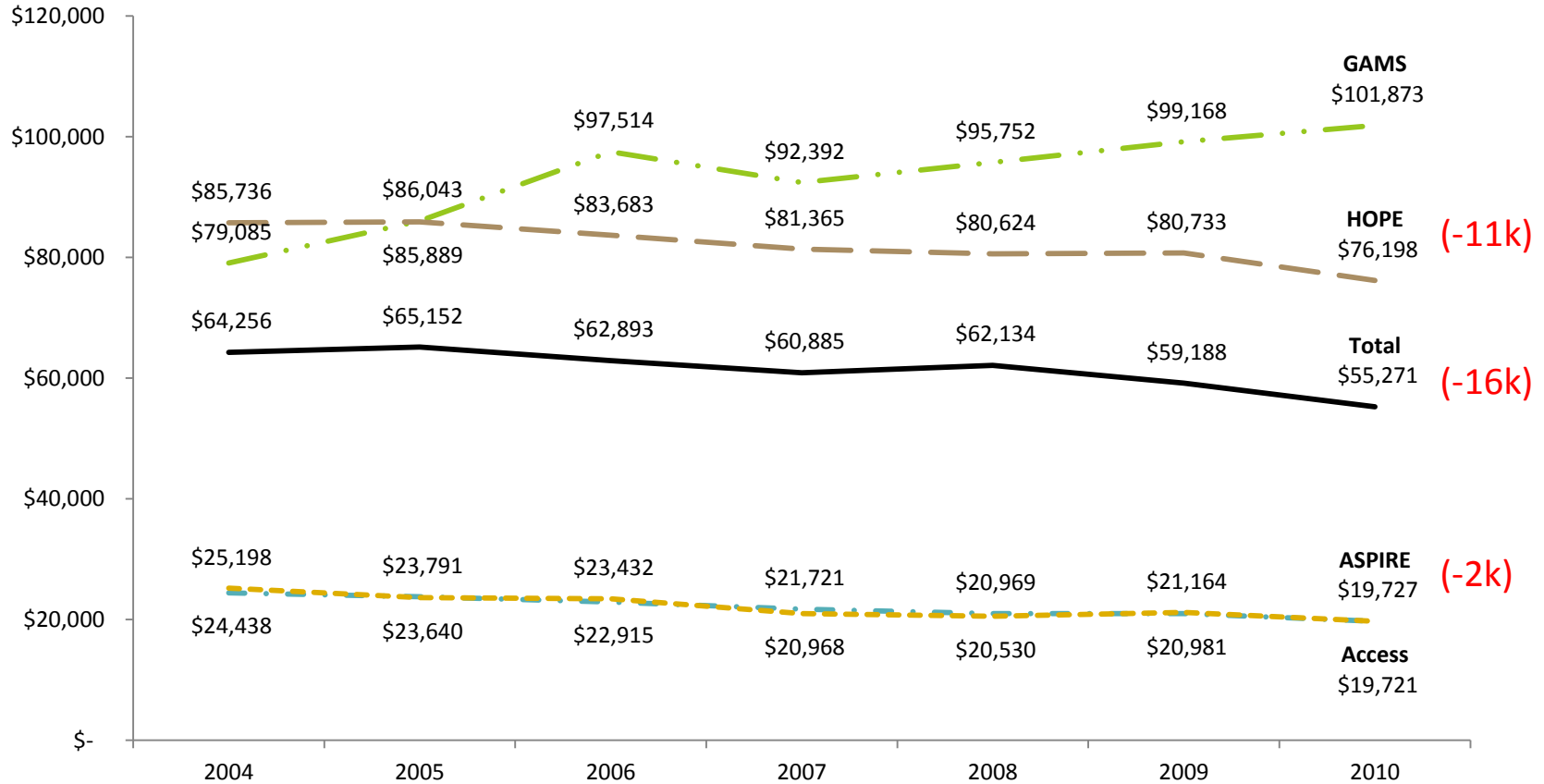
Median Family Adjusted Gross Income by Scholarship Type, **Renewing** TELS Freshmen, Fall 2004 - Fall 2010



Source: *Tennessee Higher Education Commission*



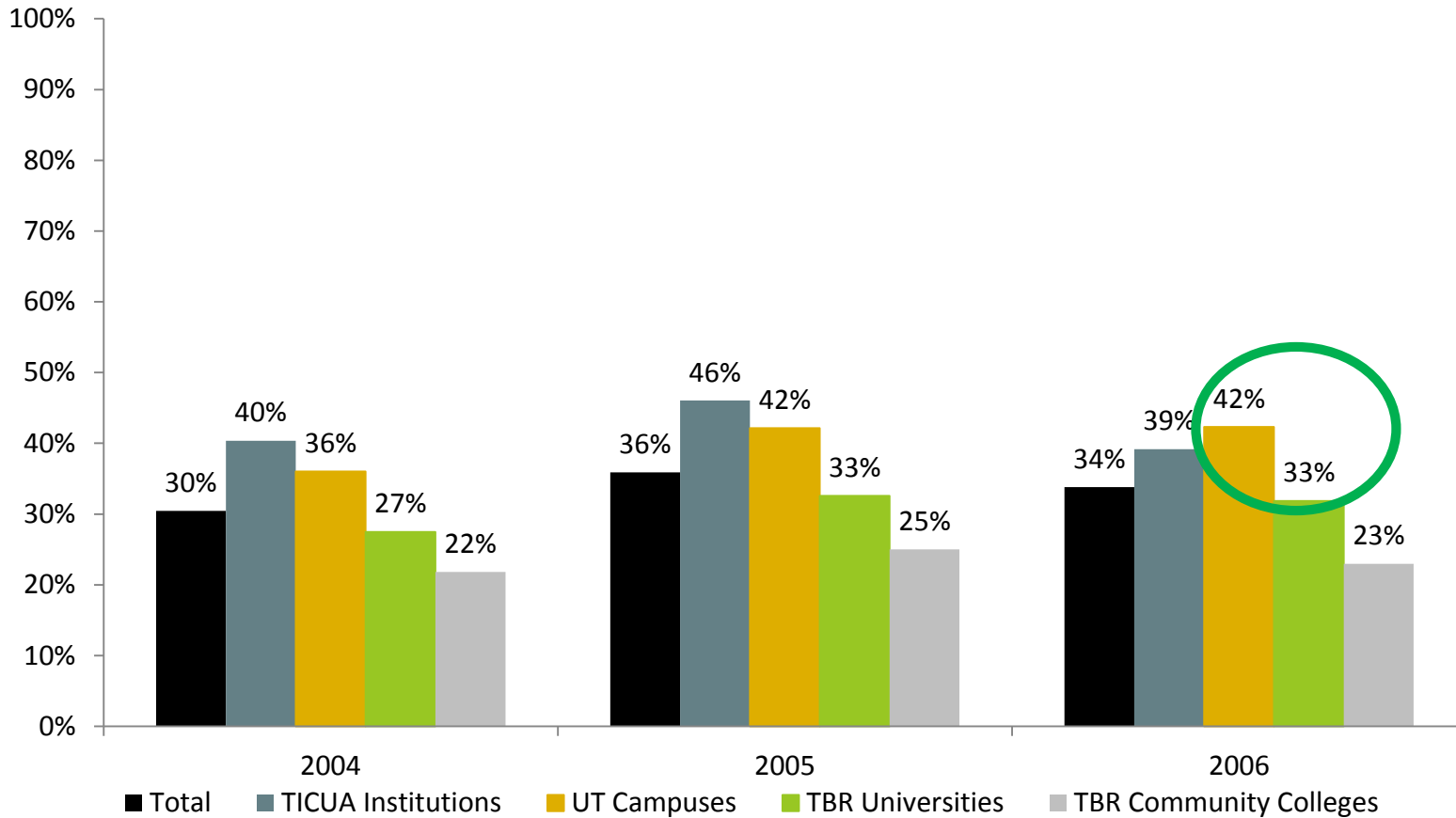
Median Family Adjusted Gross Income by Scholarship Type, **Non-renewing** TELS Freshmen, Fall 2004 - Fall 2010



Source: *Tennessee Higher Education Commission*



5-year Graduation Rate with Scholarship Intact by System, TELS First-time Freshmen, Fall 2004 - Fall 2006 *

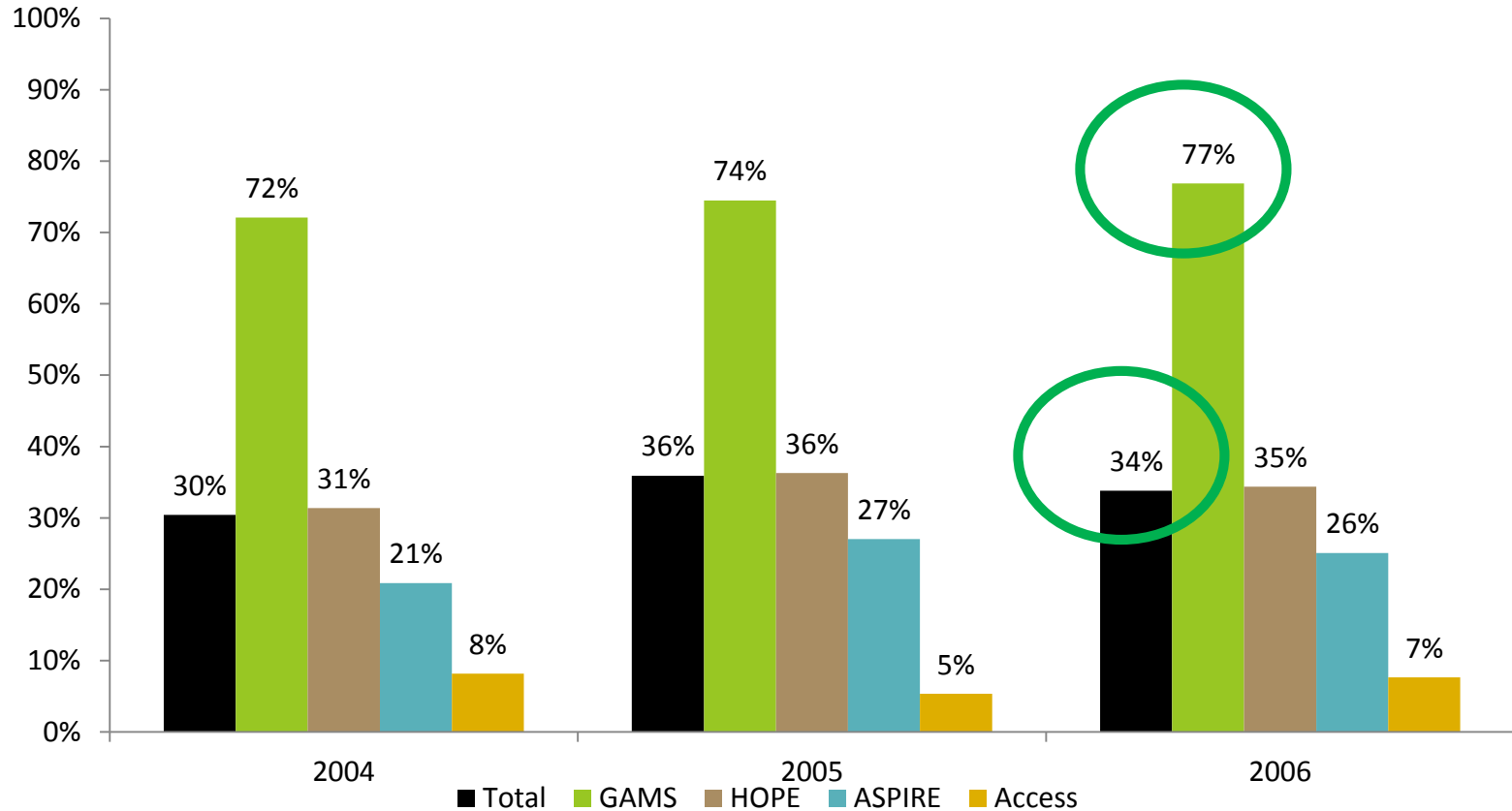


Source: *Tennessee Higher Education Commission*



5-year Graduation Rate with Scholarship Intact

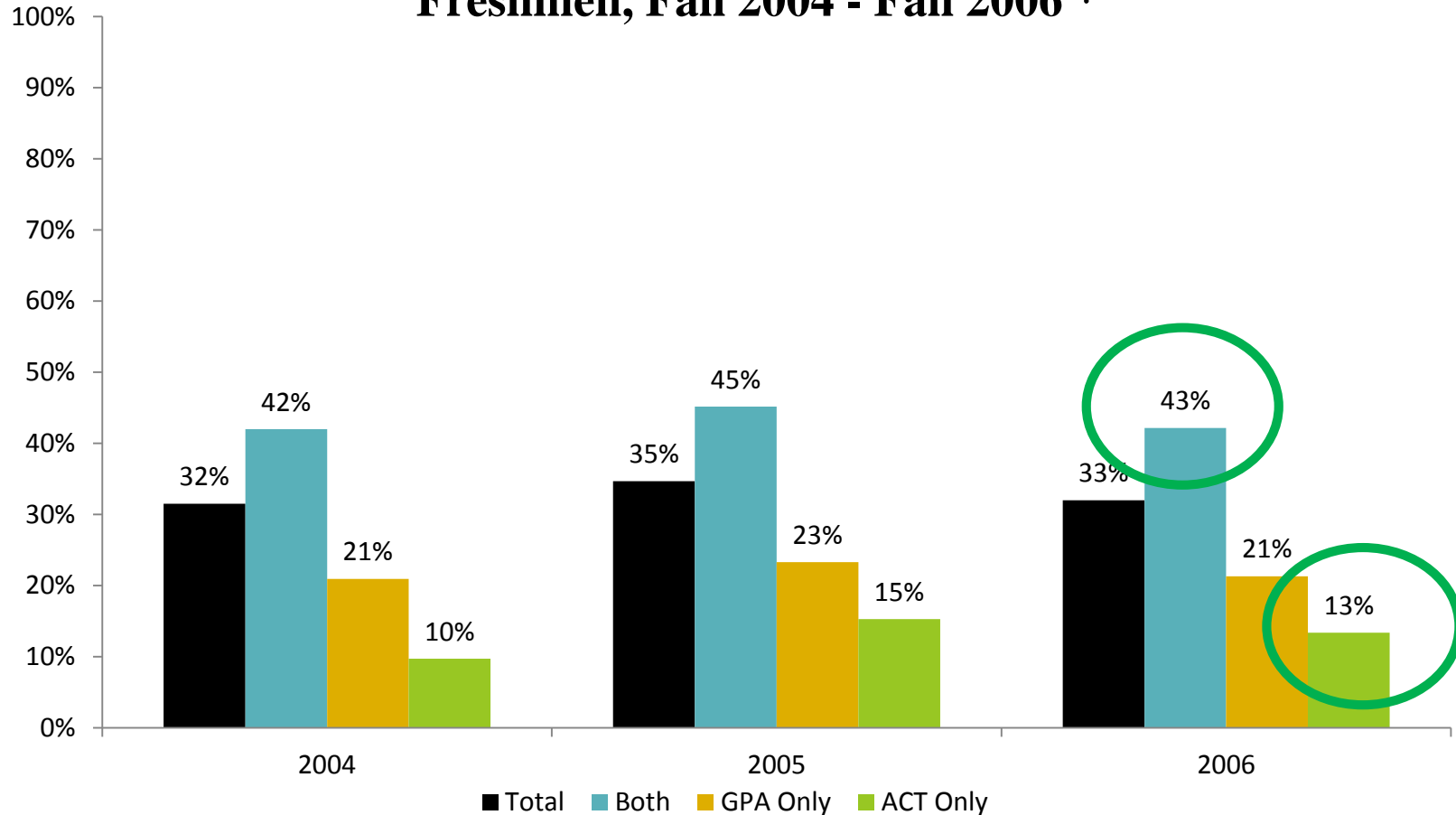
by **Scholarship Type**, TELS First-time Freshmen, Fall 2004 - Fall 2006 *



Source: *Tennessee Higher Education Commission*



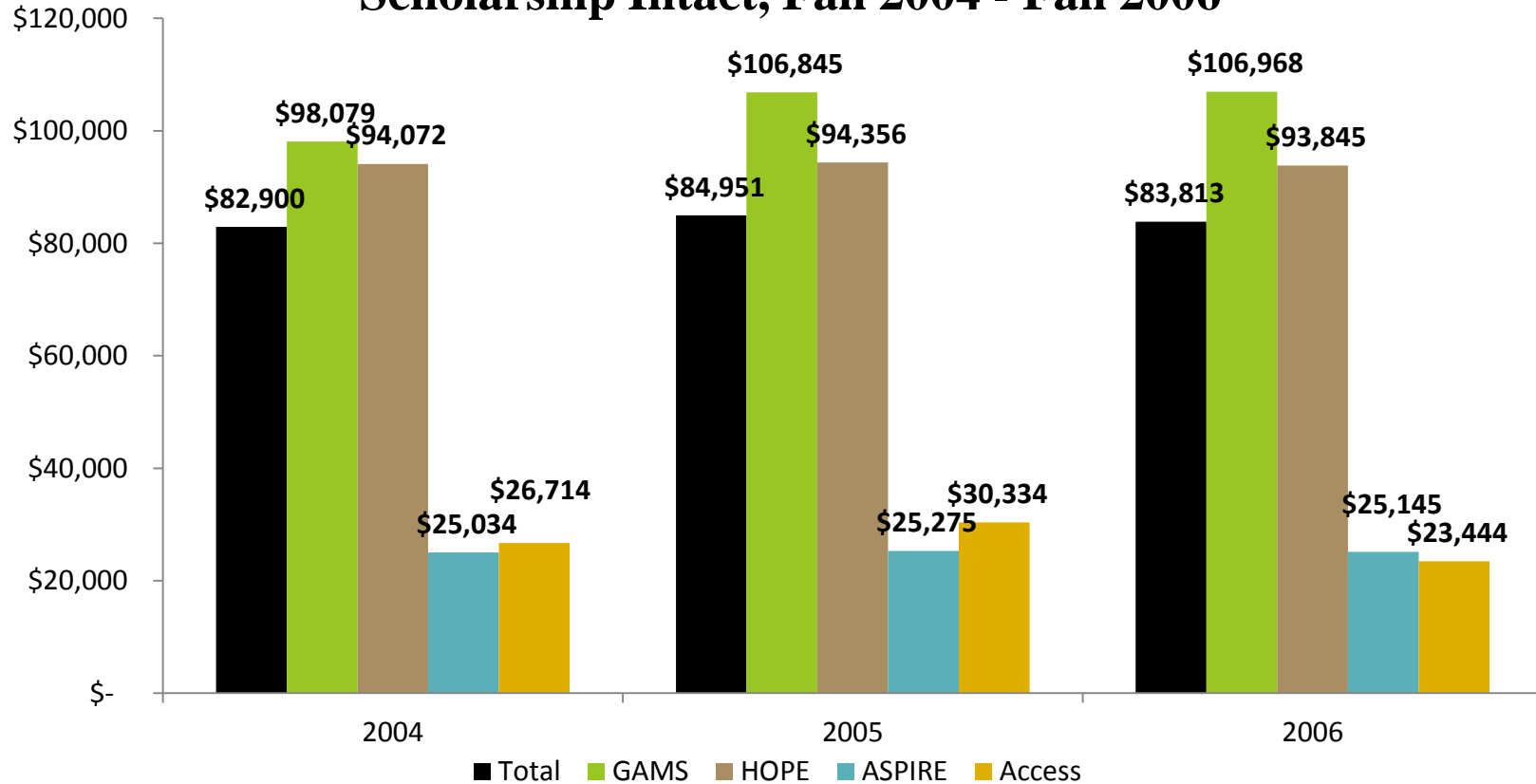
5-year Graduation Rate with Scholarship Intact by Qualifications Met (HOPE and ASPIRE Only), TELS First-time Freshmen, Fall 2004 - Fall 2006 *



Source: *Tennessee Higher Education Commission*



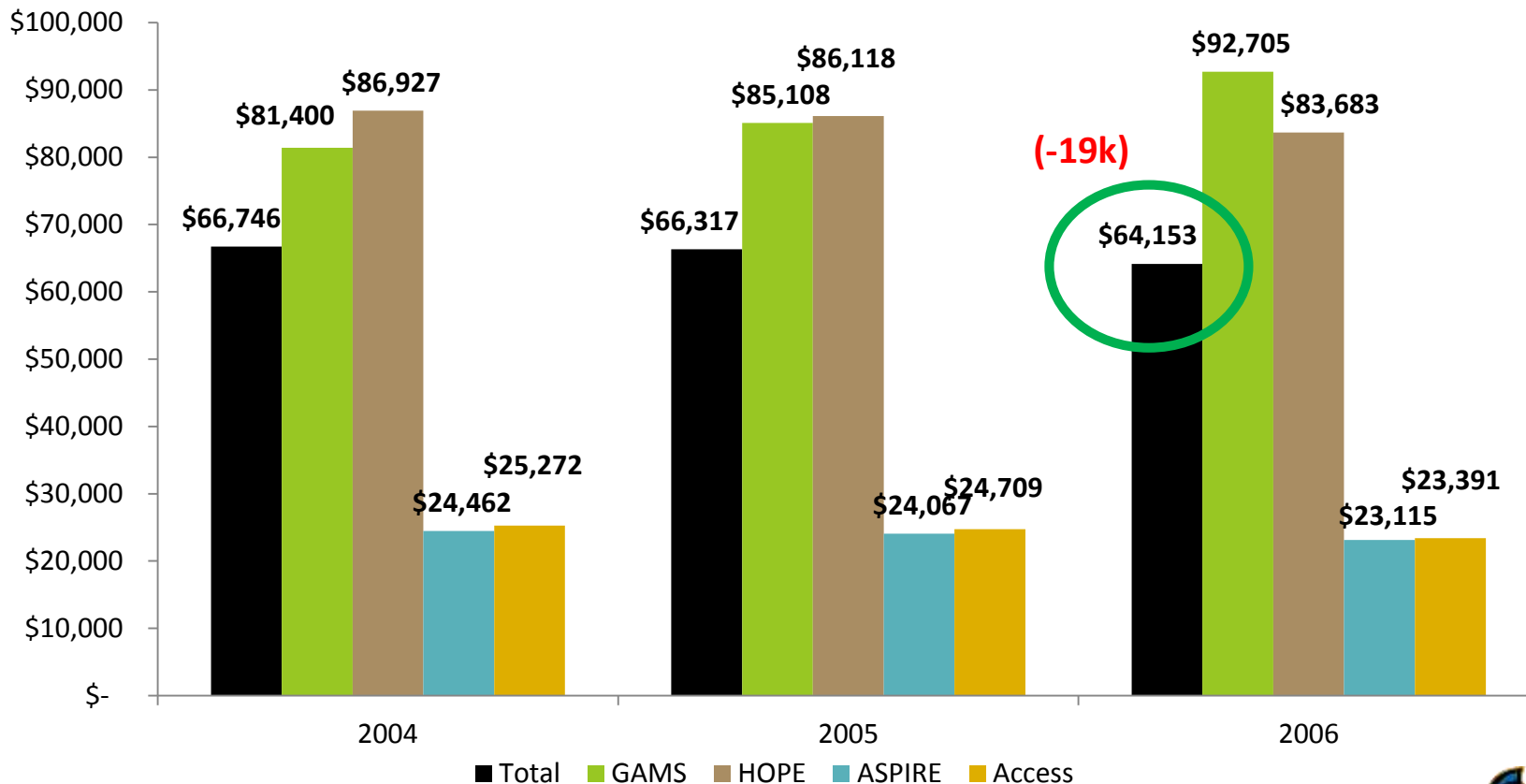
Median Family Adjusted Gross Income by Scholarship Type, TELS Students who Graduated within 5-years with Scholarship Intact, Fall 2004 - Fall 2006



Source: *Tennessee Higher Education Commission*



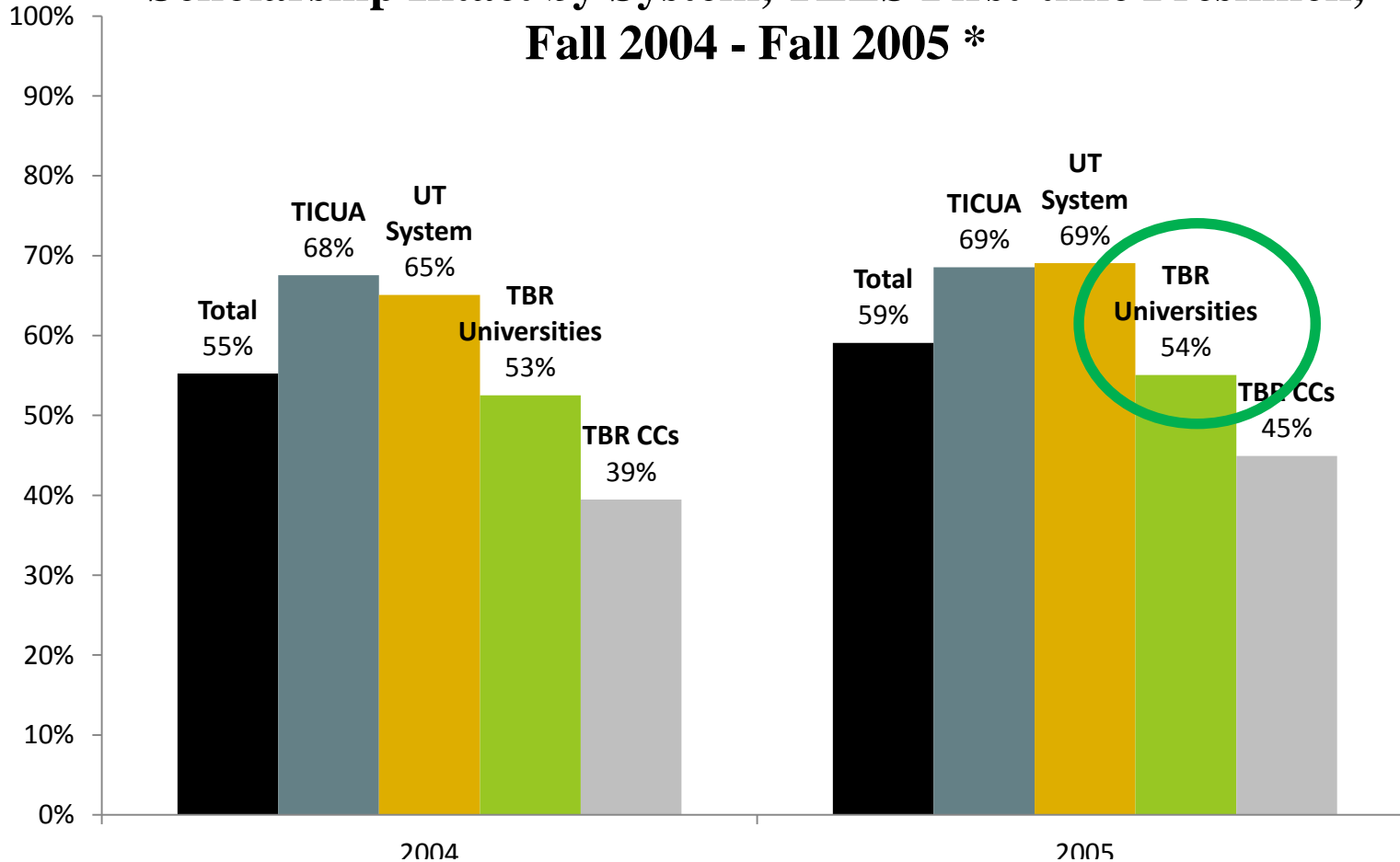
Median Family Adjusted Gross Income by Scholarship Type, TELS Students who Did Not Graduate within 5-years with Scholarship Intact, Fall 2004 - Fall 2006



Source: Tennessee Higher Education Commission



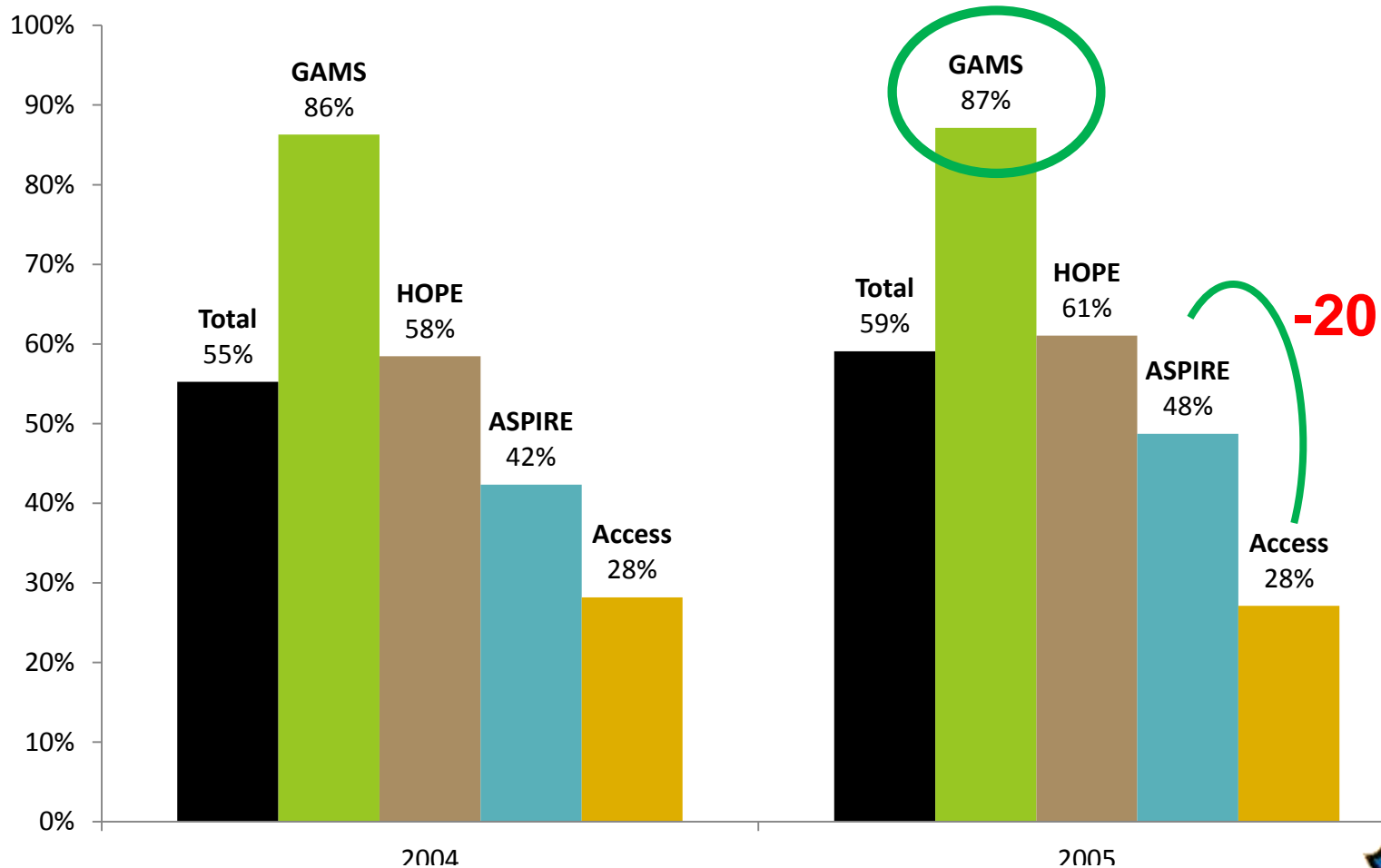
Six-year Graduation Rate with or without Scholarship Intact by System, TELS First-time Freshmen, Fall 2004 - Fall 2005 *



Source: *Tennessee Higher Education Commission*



Six-year Graduation Rate with or without Scholarship Intact by Scholarship Type, TELS First-time Freshmen, Fall 2004 - Fall 2005 *



Source: *Tennessee Higher Education Commission*



HOPE Awards by Institution by Recipients, Fall 2010-11

University	Lottery Recipients	Dollars	Total Enrollment
University of TN	7,785	29,050,390	27,306
MTSU	5,647	20,702,909	26,654
UT Chattanooga	3,142	11,652,121	10,726
Tennessee Tech.	3,035	11,109,717	11,528
Univ. of Memphis	3,012	11,050,210	22,586
ETSU	2,836	10,486,405	14,999

Source: TSAC and *Tennessee Higher Education Commission*



ETSU Students

Who they are – Where they come from



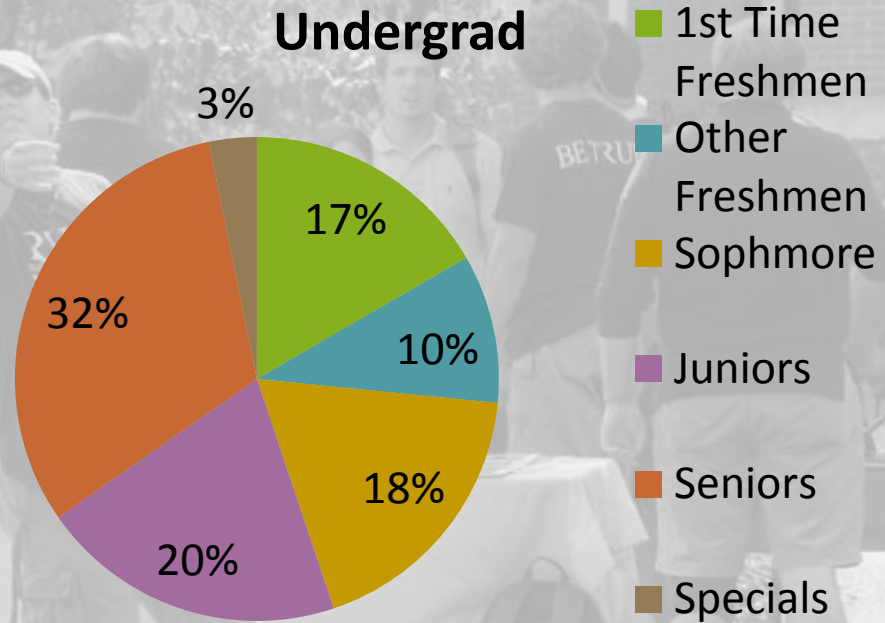
Enrollment

FALL 2011-12

Undergraduates	12,539
Graduates	2,123
Total	14,662*

* Does not include Professional Students (M.D.)

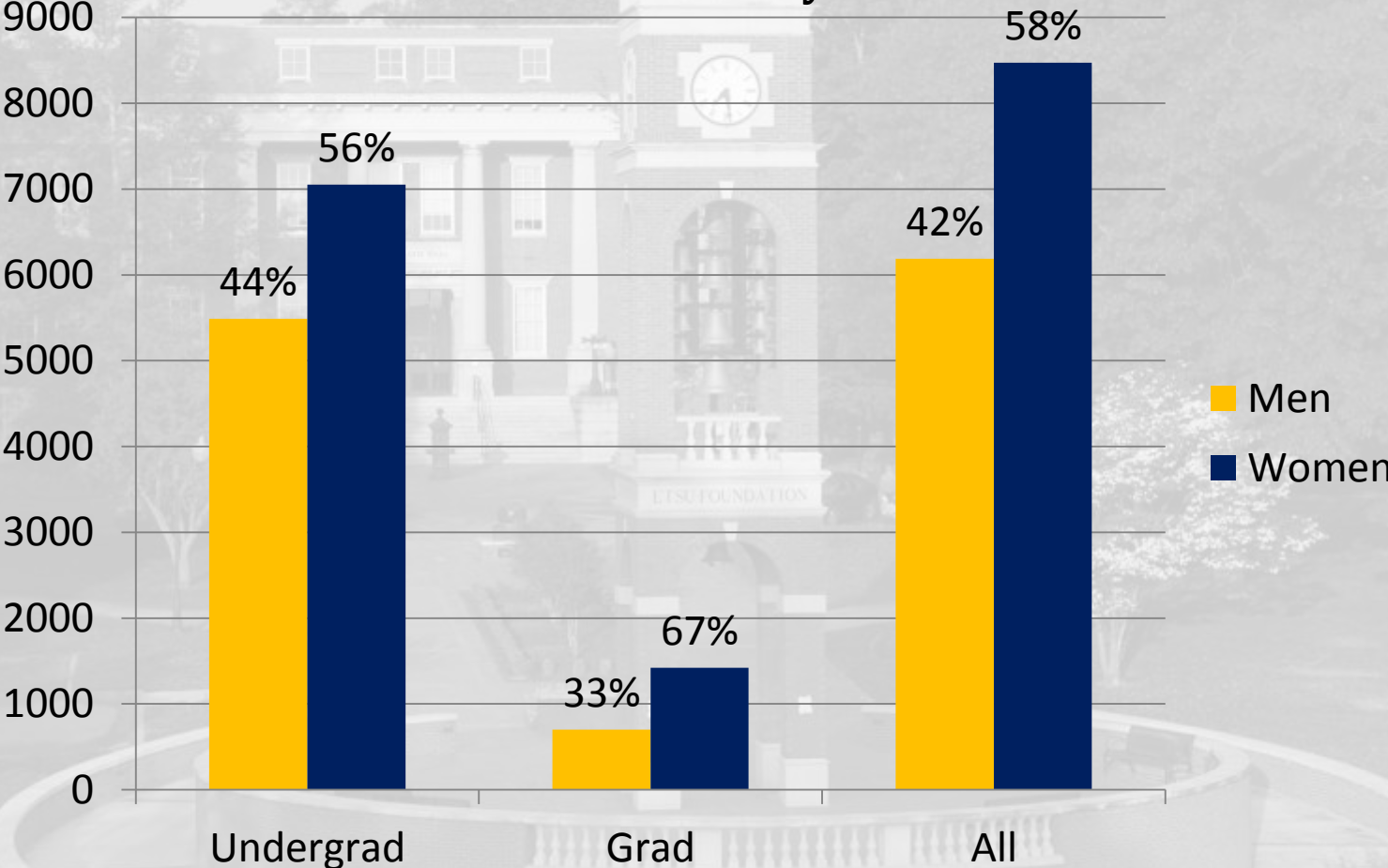
Undergrad



6. Student Life & Services

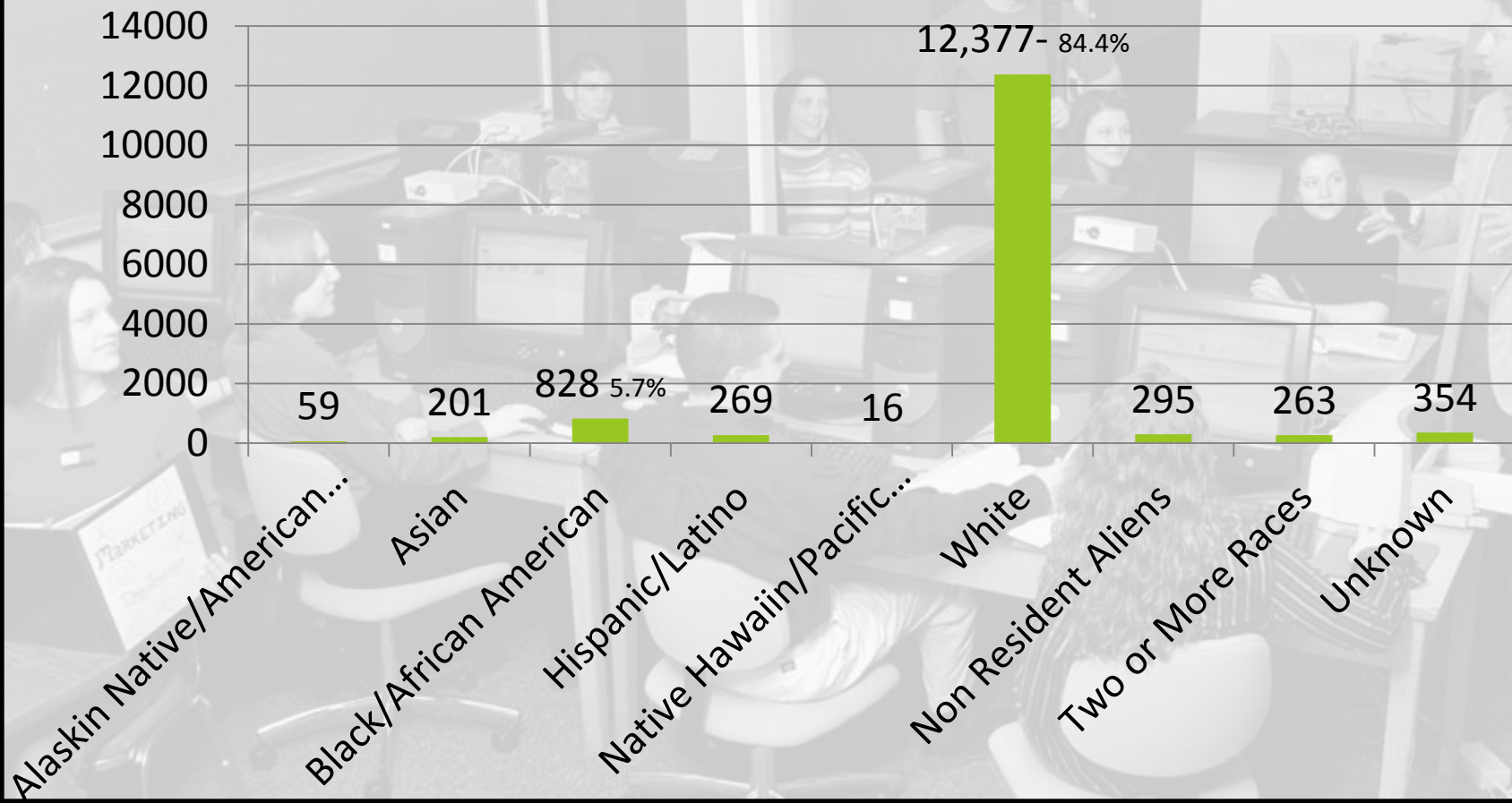


Enrollment Mix - by Gender



ALUMNI PLAZA
2005

Enrollment Mix - by Ethnicity-Race



Enrollment Geographical footprint Southern Regional Education Board States (SREB)

	2011	2006
SREB States		
Alabama	16	15
Arkansas	3	3
Delaware	3	0
Florida	50	31
Georgia	52	56
Kentucky	18	29
Louisiana	5	3
Maryland	29	22
Mississippi	3	9
North Carolina	617	223
Oklahoma	2	1
South Carolina	40	46
Tennessee	12,496	10,619
Texas	16	7
Virginia	739	628
West Virginia	17	20

	2011	2006
Total SREB	14,106	11,712
Other States	235	157
International	321	287
Total All	14,662	12,156



Enrollment by Largest TN Counties

County	2011	% of Univ.
Washington	3,303	22.5
Sullivan	2,128	14.5
Carter	977	6.6
Knox	882	6.0
Greene	702	4.8
Hawkins	637	4.3
Hamilton	399	2.7
Hamblen	356	2.4
All TN Counties	10,928	74.5

Enrollment by Largest Border Counties Approved for In-State Tuition

County	2011	% of Univ.
N. Carolina (7)	445	3.0
Virginia (4)	425	2.9
Total Border/In-State Tuition	870	5.9

International Enrollment

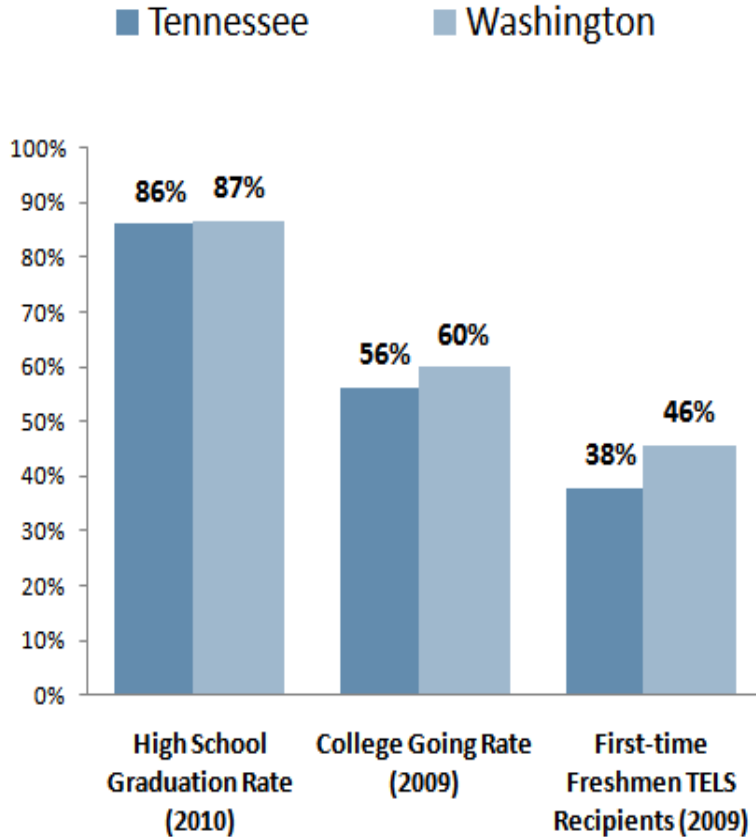
Item	2011	% of Univ.
Undergraduates	200	1.4
Graduates	121	0.8
Total International	321	2.2

Enrollment Geographical footprint

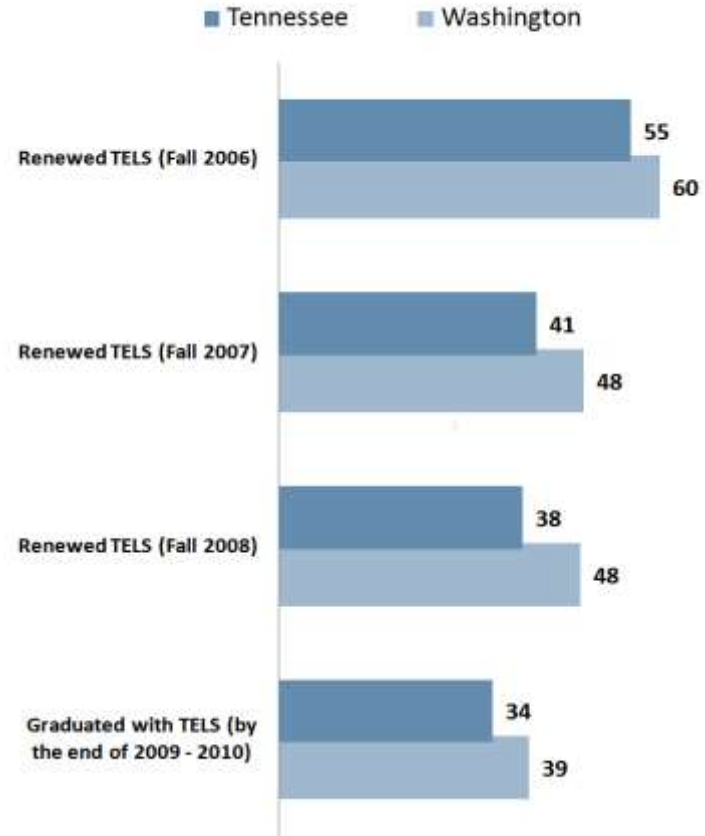


1. Washington County Profile

County Education Snapshot



Out of 100 Fall 2005 Freshman Lottery Recipients, how many...?



Source: *Tennessee Higher Education Commission*



1. Washington County Profile

Demographic	County	TN	US
Adults w/ Diploma or Higher	84.4%	82.5%	84.9%
Adults w/ Assoc. Degree or Higher	32.8%	28.6%	35.2%
Adults w/Bachelors Degree or Higher	26.0%	22.6%	27.8%
Median Family Income	\$51,982	\$52,638	\$62,367
Population in Poverty	19.4%	17.3%	14.0%
Population Growth (2000 – 09)	12.2%	10.4%	7.1%

Where do residents attend college? (2010)

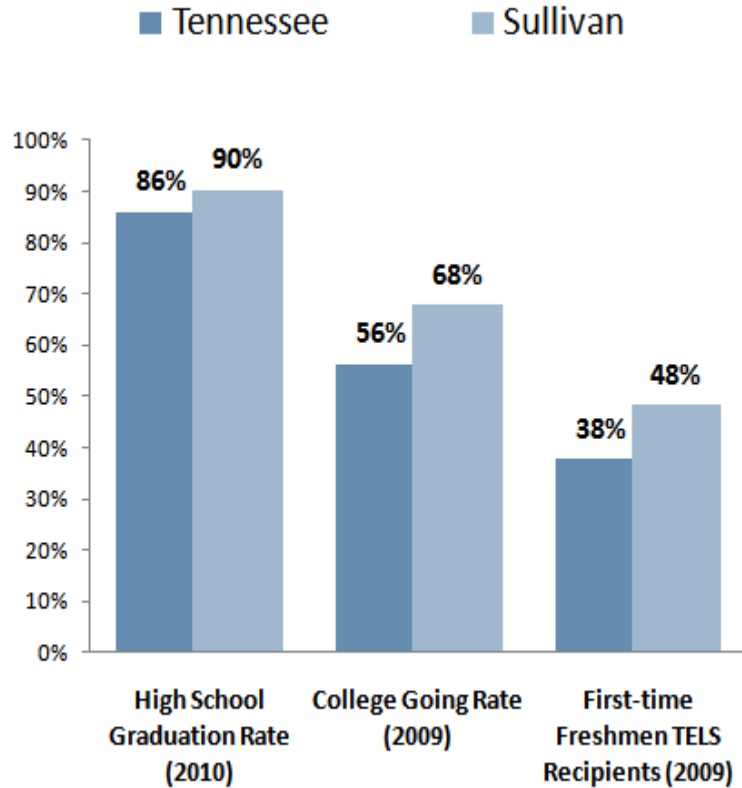
ETSU	2,896	51.3%
Northeast ST	1,685	29.9%
UT - Knox	367	6.5%
Eliz. Tech. Ctr.	192	3.4%

Source: *Tennessee Higher Education Commission*

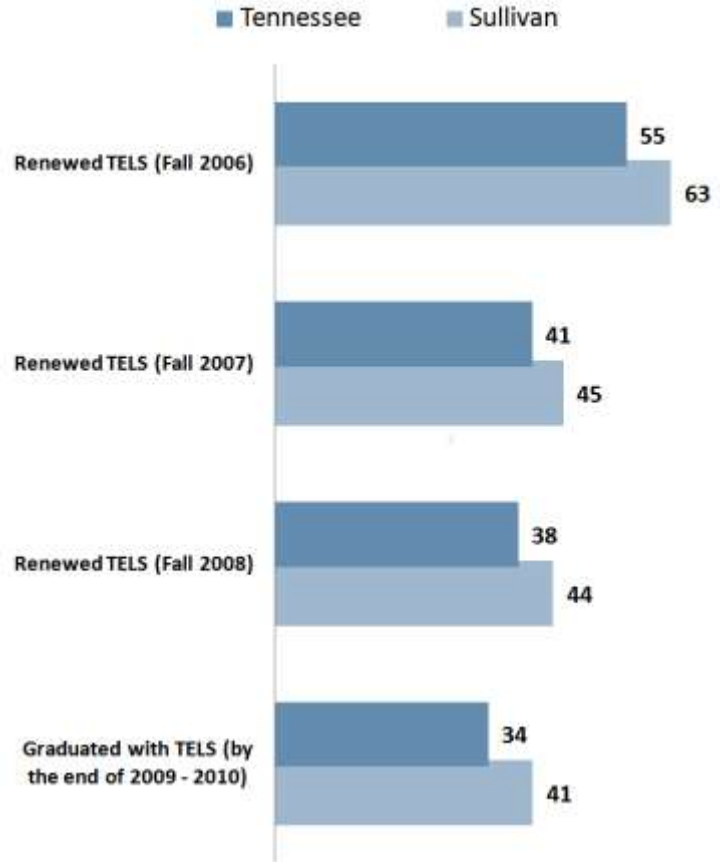


2. Sullivan County Profile

County Education Snapshot



Out of 100 Fall 2005 Freshman Lottery Recipients, how many...?



Source: *Tennessee Higher Education Commission*



2. Sullivan County Profile

Demographic	County	TN	US
Adults w/ Diploma or Higher	82.5%	82.5%	84.9%
Adults w/ Assoc. Degree or Higher	26.6%	28.6%	35.2%
Adults w/Bachelors Degree or Higher	19.2%	22.6%	27.8%
Median Family Income	\$49,542	\$52,638	\$62,367
Population in Poverty	18.2%	17.3%	14.0%
Population Growth (2000 – 09)	1.1%	10.4%	7.1%

Where do residents attend college? (2010)

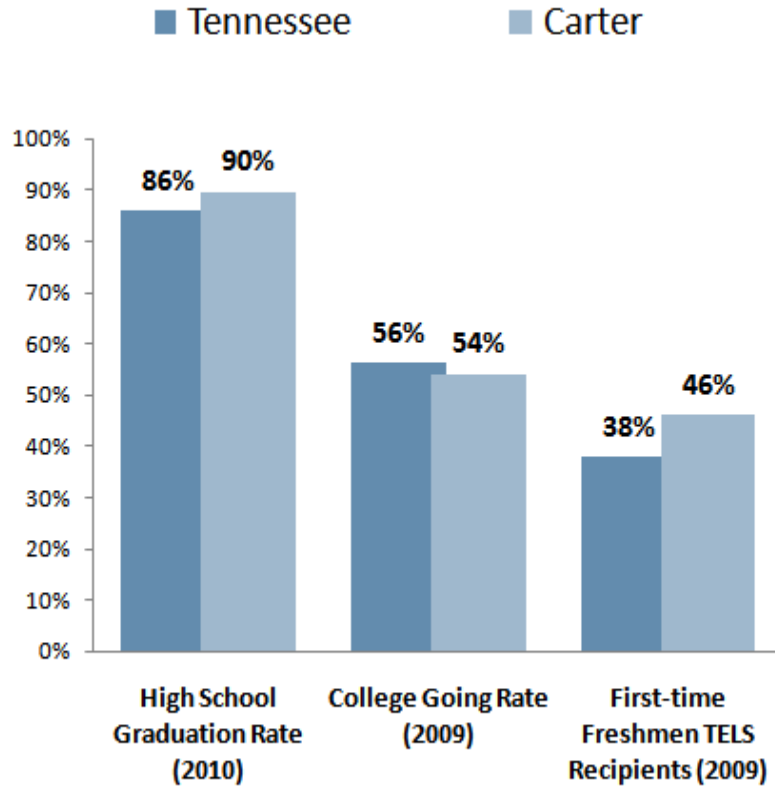
Northeast ST	3,019	45.7%
ETSU	2,186	33.1%
UT - Knox	596	9.0%
Eliz. Tech. Ctr.	170	2.6%

Source: *Tennessee Higher Education Commission*

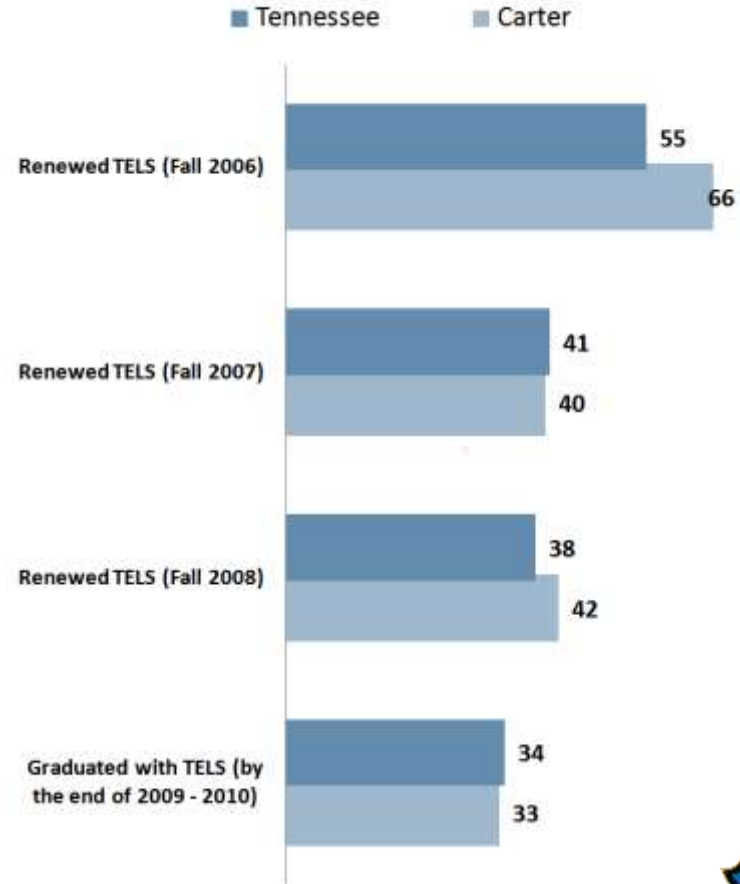


3. Carter County Profile

County Education Snapshot



Out of 100 Fall 2005 Freshman Lottery Recipients, how many...?



Source: *Tennessee Higher Education Commission*



3. Carter County Profile

Demographic	County	TN	US
Adults w/ Diploma or Higher	77.53%	82.5%	84.9%
Adults w/ Assoc. Degree or Higher	20.1%	28.6%	35.2%
Adults w/Bachelors Degree or Higher	14.9%	22.6%	27.8%
Median Family Income	\$37,855	\$52,638	\$62,367
Population in Poverty	26.2%	17.3%	14.0%
Population Growth (2000 – 09)	3.9%	10.4%	7.1%

Where do residents attend college? (2010)

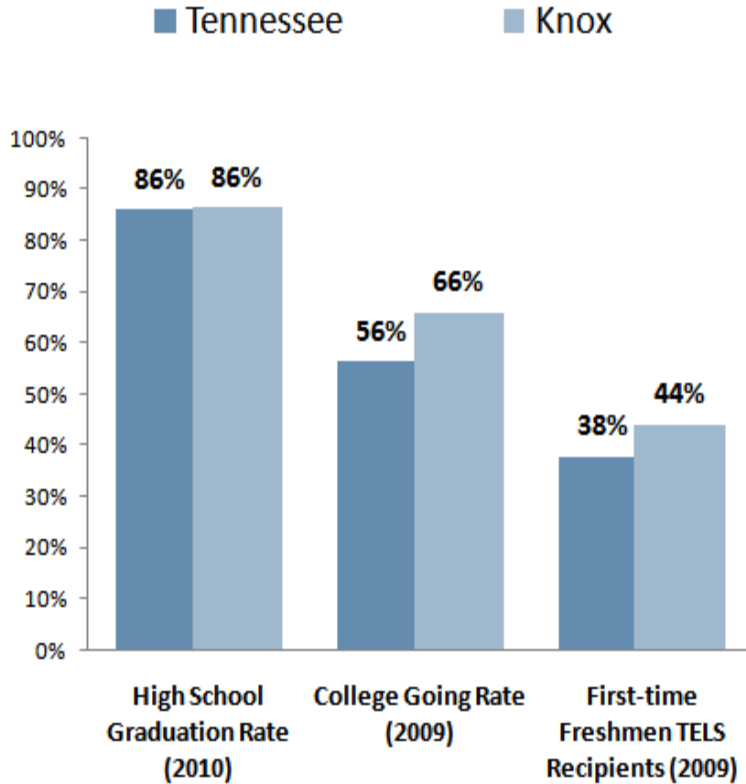
ETSU	892	40.1%
Northeast ST	788	35.4%
Eliz. Tech. Ctr.	302	13.6%

Source: *Tennessee Higher Education Commission*

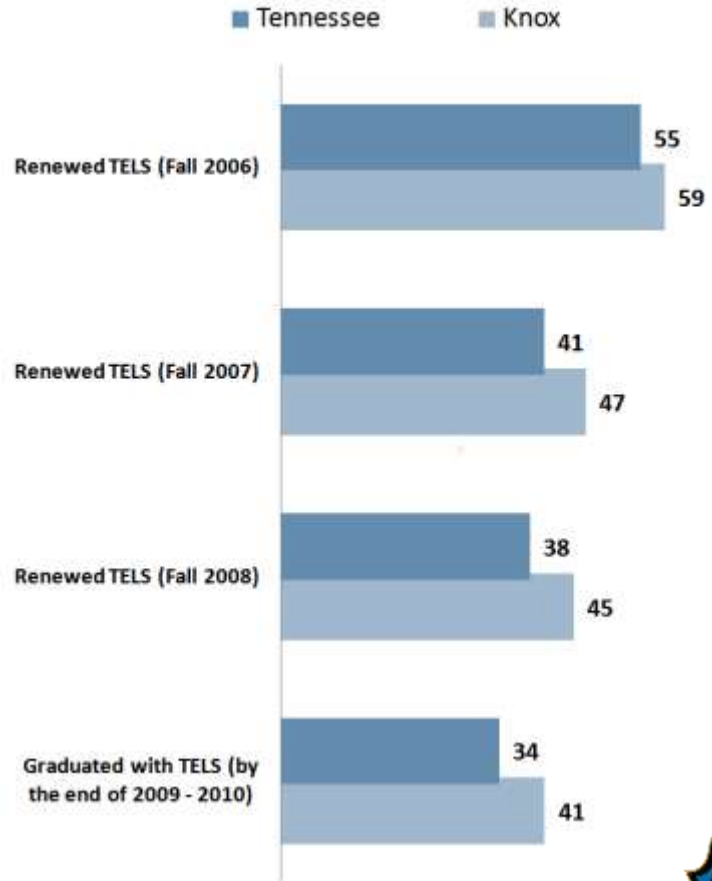


4. Knox County Profile

County Education Snapshot



Out of 100 Fall 2005 Freshman Lottery Recipients, how many...?



Source: *Tennessee Higher Education Commission*



4. Knox County Profile

Demographic	County	TN	US
Adults w/ Diploma or Higher	88.8%	82.5%	84.9%
Adults w/ Assoc. Degree or Higher	41.3%	28.6%	35.2%
Adults w/Bachelors Degree or Higher	33.9%	22.6%	27.8%
Median Family Income	\$60,599	\$52,638	\$62,367
Population in Poverty	17.3%	17.3%	14.0%
Population Growth (2000 – 09)	13.7%	10.4%	7.1%

Where do residents attend college? (2010)

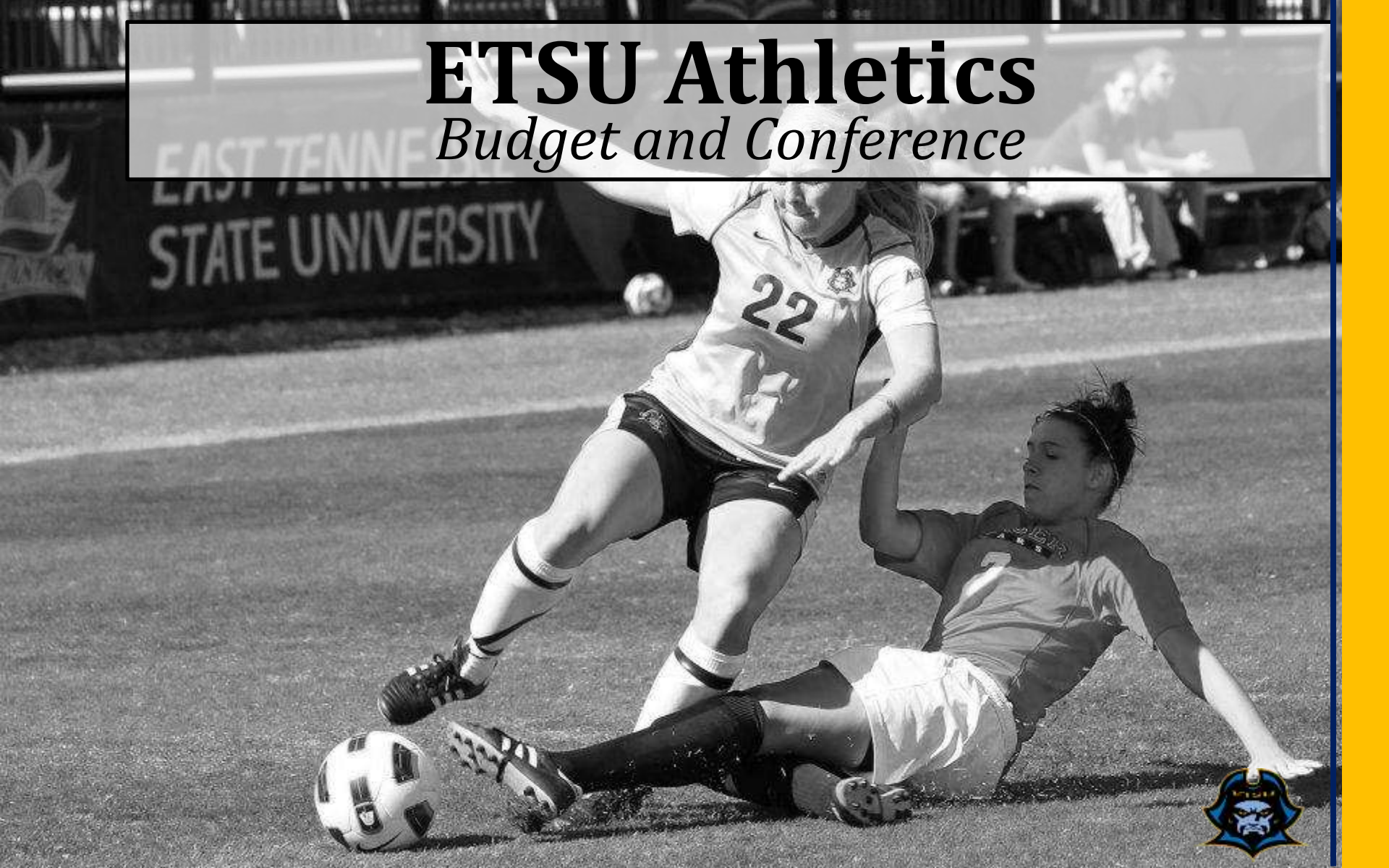
Pellissippi	6,458	36.8%
UT - Knox	5,672	32.3%
Knox Tech Ctr	1,093	6.2%
Roane	1,001	5.7%
ETSU	844	4.8

Source: *Tennessee Higher Education Commission*



ETSU Athletics

Budget and Conference



Budget Review

Administration, Support and Services	2,505,092
--------------------------------------	-----------

Men's Basketball	1,312,170
Men's Baseball	521,010
Men's Soccer	479,650
Men's Track	371,270
Men's Golf	343,740
Men's Tennis	287,340
Total	3,315,180

Women's Basketball	918,010
Women's Soccer	543,200
Women's Softball	487,270
Women's Volleyball	456,640
Women's Track	439,960
Women's Tennis	338,890
Women's Golf	311,430
Total	3,495,400

Total Budget 2011-12	9,315,672
----------------------	-----------



Conference Affiliation- Atlantic Sun

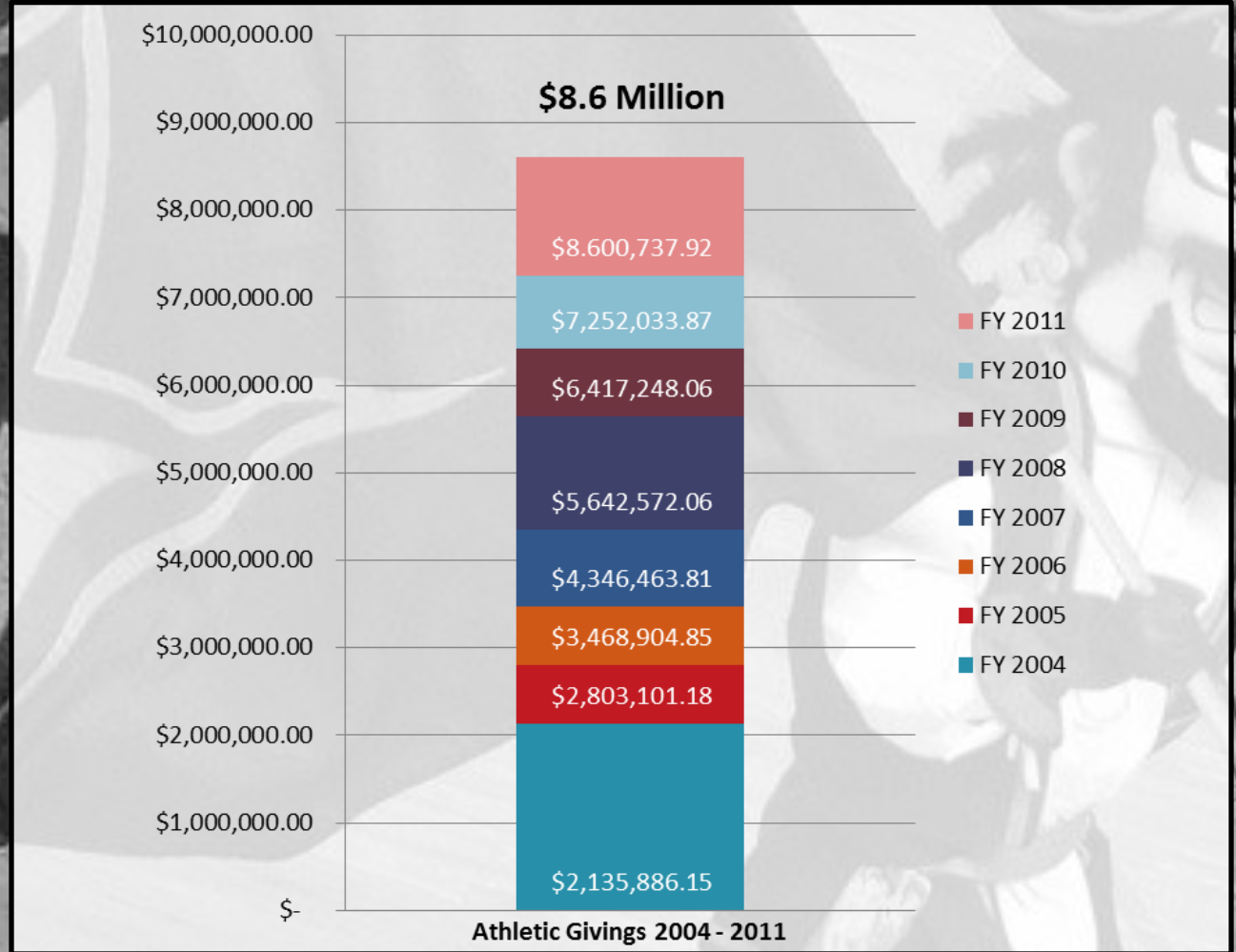
Institution	Location	Enrollment	Type	Yrs in league
Kennesaw State	Kennesaw , GA	20,600	Public	7
University of North Florida	Jacksonville, FL	16,500	Public	7
East Tennessee State University	Johnson City, TN	15,530	Public	7
Northern Kentucky University	Highland Heights, KY	15,405	Public	0
Florida Gulf Coast University	Fort Myers, FL	10,560	Public	5
Mercer University	Macon, GA	8,200	Private	34
Univ. of South Carolina Upstate	Spartanburg, SC	4,500	Public	5
Jacksonville University	Jacksonville, FL	3,400	Private	14
Lipscomb University	Nashville, TN	3,000	Private	9
Stetson University	Deland, FL	2,200	Private	27



Athletics Giving

Overall Summary

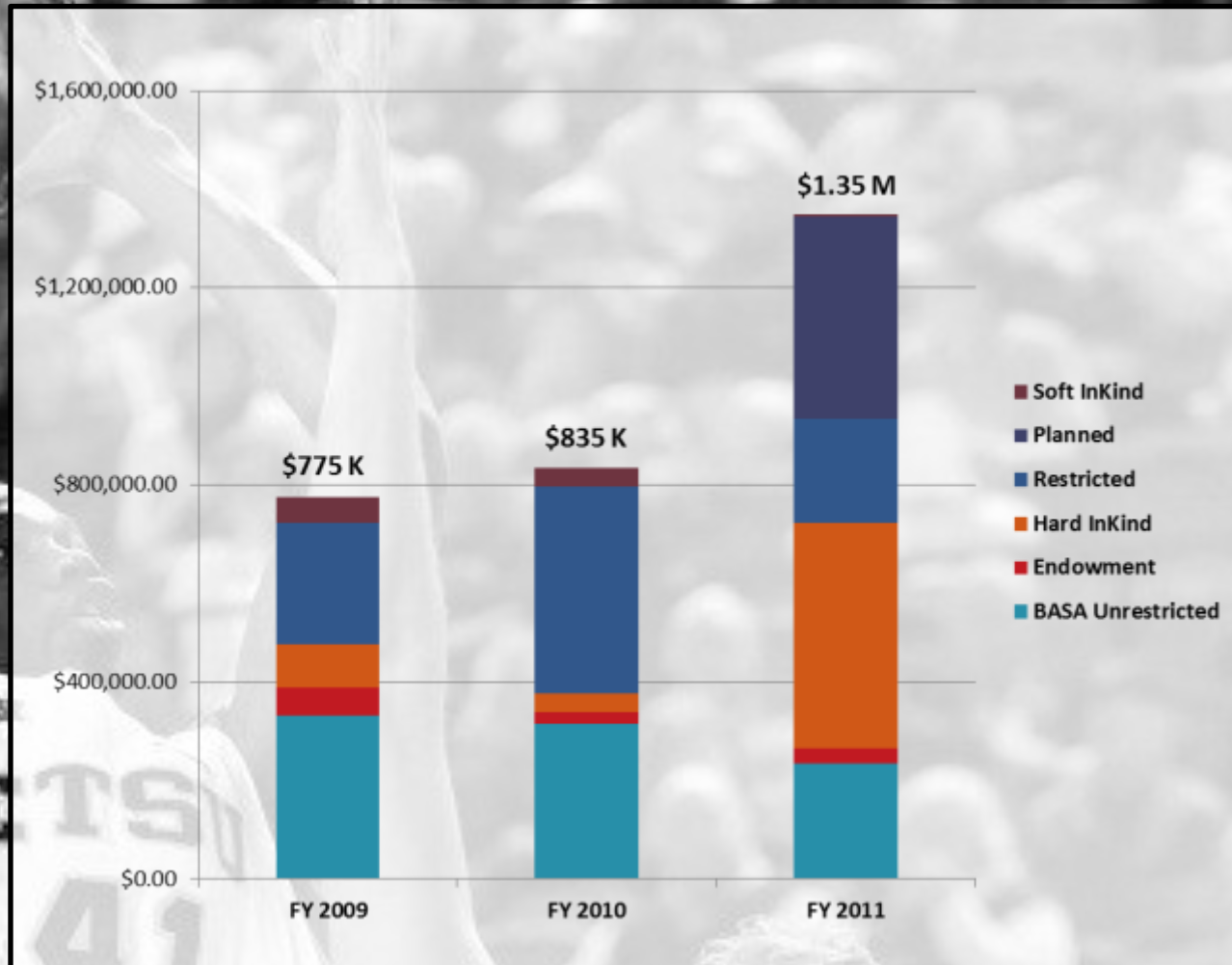
\$8.6 Million



Athletics Giving

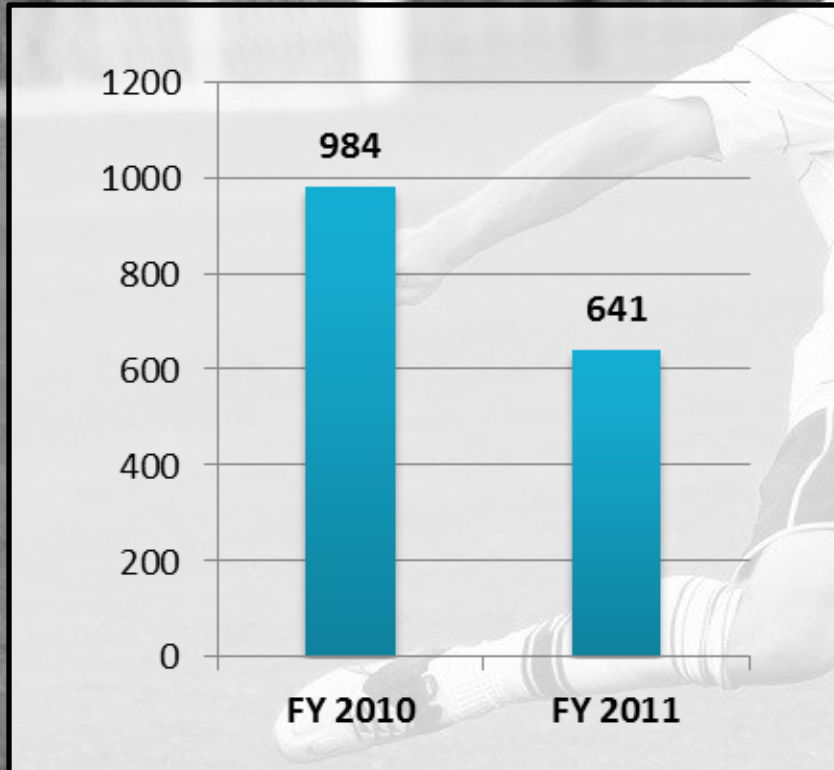
Last 3 Years

2009 - 2011

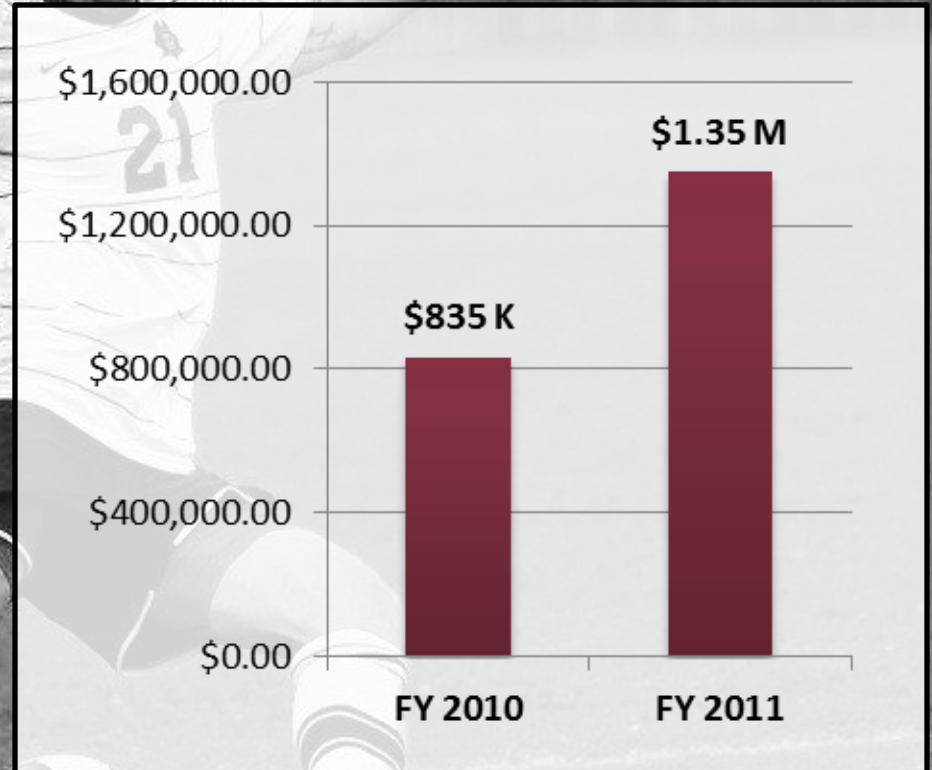


Athletics Giving

Athletics Donors 2010 vs. 2011



Athletics Giving 2010 vs. 2011



Athletics – Questions / Strategies

- What about Football?
- Role **ETSU** Athletics Plays in University?
- What are benefits of Div. I Athletics to campus / community?
- What are **OPTIONS** to achieve those benefits?
- Steps to accomplish options and achieve **EXCELLENCE**?
- What are financial commitments?
- How do we begin and **SUSTAIN** future plans?



ETSU Budget

Revenue and Expenditures



1,213,553,540	
928,095,333	
549,630,000	
384,741,600	
1,076,839,500	30
677,850,600	30
591,625,900	
395,670,000	
540,000,000	



Revenue

<u>Function</u>	<u>2010-11</u>	<u>2009-10</u>	<u>2008-09</u>	<u>2007-08</u>	<u>2006-07</u>	<u>2005-06</u>
Tuition/Fees	\$111,336,360	\$100,585,828	\$87,068,636	\$78,495,364	\$69,104,112	\$64,502,586
Appropriations	98,482,000	85,810,873	92,401,792	98,619,077	91,710,283	86,172,623
Gifts, Grants/Contracts						
Federal	65,944,085	64,962,786	40,998,240	36,630,277	39,441,060	37,356,159
State	29,329,964	28,475,143	32,361,368	24,883,654	21,654,452	17,312,734
Local	3,222,880	3,294,085	3,244,878	3,146,111	2,737,072	2,917,845
Private	10,027,284	11,813,369	11,536,239	15,142,421	11,291,492	9,811,321
Endowment Income	571,262	594,588	724,115	677,208	751,230	625,993
Sales/Services from Educational Activities	26,662,673	24,321,630	24,063,693	21,793,574	20,375,182	19,128,210
Other Sources	<u>1,738,213</u>	<u>1,558,124</u>	<u>1,250,269</u>	<u>2,590,753</u>	<u>2,933,900</u>	<u>2,733,940</u>
Total Educational and General Revenues	347,314,721	321,416,426	293,649,230	281,978,641	259,998,783	240,561,411
Auxiliary Enterprises	<u>18,228,953</u>	<u>16,280,588</u>	<u>14,293,815</u>	<u>12,681,054</u>	<u>10,363,769</u>	<u>9,449,487</u>
Total Revenues	\$365,543,674	\$321,416,426	\$307,943,045	\$294,659,694	\$270,362,552	\$250,010,898

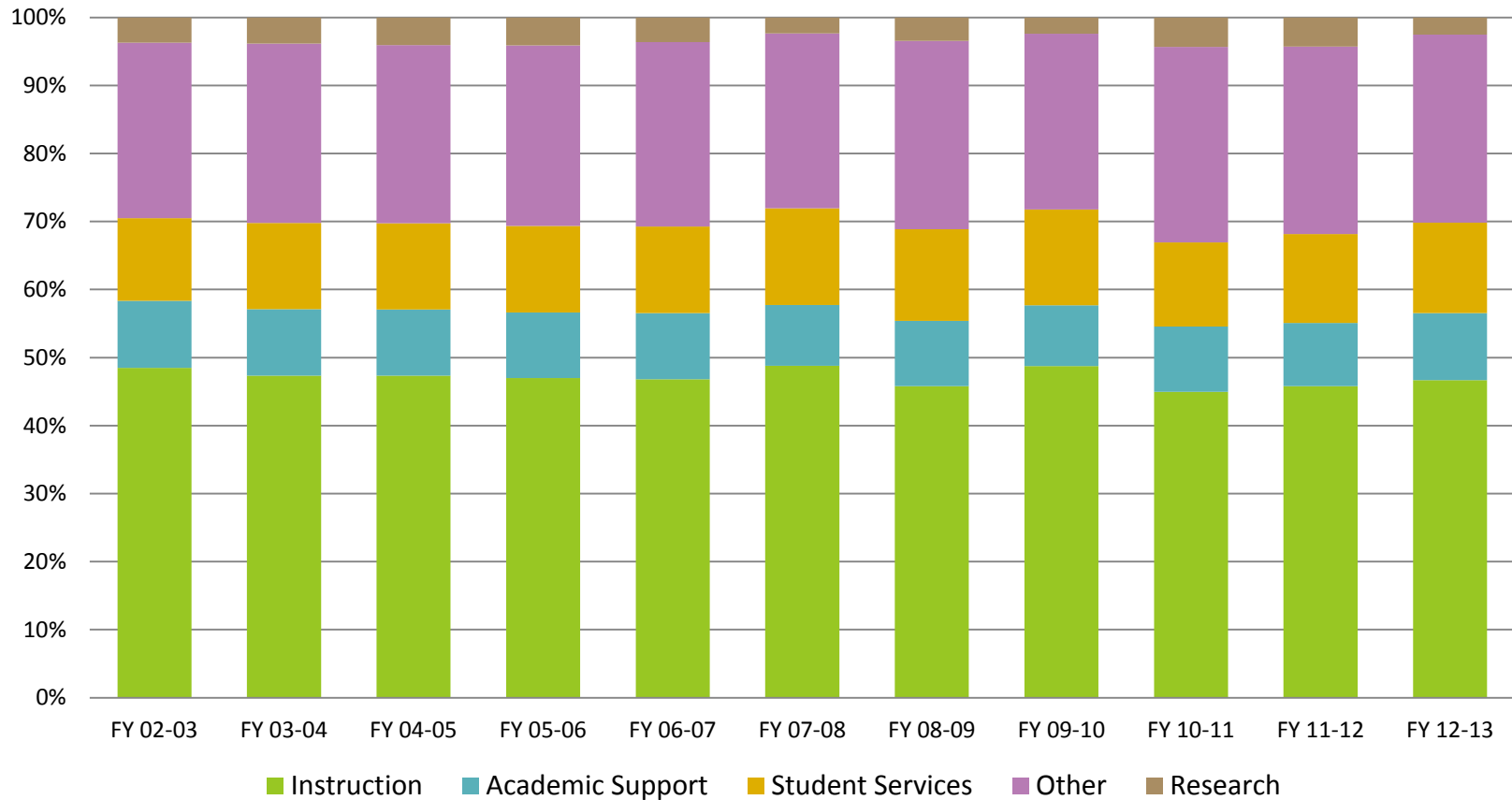


Expenditures

<u>Function</u>	<u>2010-11</u>	<u>2009-10</u>	<u>2008-09</u>	<u>2007-08</u>	<u>2007-08</u>	<u>2006-07</u>
Instruction	\$136,844,214	\$128,046,749	\$130,406,829	\$128,873,759	\$128,873,759	\$118,127,263
Research	13,932,681	11,335,001	11,297,665	10,317,683	10,317,683	10,715,361
Public Service	23,545,099	22,892,693	21,726,209	18,737,064	18,737,064	15,656,528
Academic Support	25,113,751	24,263,251	23,280,397	22,461,126	22,461,126	20,369,952
Student Services	21,004,775	19,020,736	19,529,465	19,665,808	19,665,808	17,626,689
Institutional Support	17,986,700	17,726,451	18,575,719	19,043,798	19,043,798	20,397,396
Maintenance of Plant	18,948,824	16,859,356	19,040,497	18,117,521	18,117,521	17,694,855
Student Aid	57,729,236	51,598,956	40,205,380	34,944,818	34,944,818	31,141,694
Mandatory Transfers	3,492,560	3,545,362	2,682,280	2,073,121	2,073,121	1,602,679
Nonmandatory Transfers	<u>22,369,897</u>	<u>18,255,607</u>	<u>3,220,578</u>	<u>7,312,271</u>	<u>7,312,271</u>	<u>3,033,320</u>
Total Education and General Expenditures	340,967,737	313,544,161	289,965,019	281,546,970	281,546,970	256,365,737
Auxiliary Enterprises	<u>18,166,011</u>	<u>16,187,095</u>	<u>14,245,297</u>	<u>12,628,652</u>	<u>12,628,652</u>	<u>10,320,926</u>
Total Expenditures	\$359,133,748	\$329,731,256	\$304,210,316	\$ 294,175,622	\$ 294,175,622	\$266,686,663



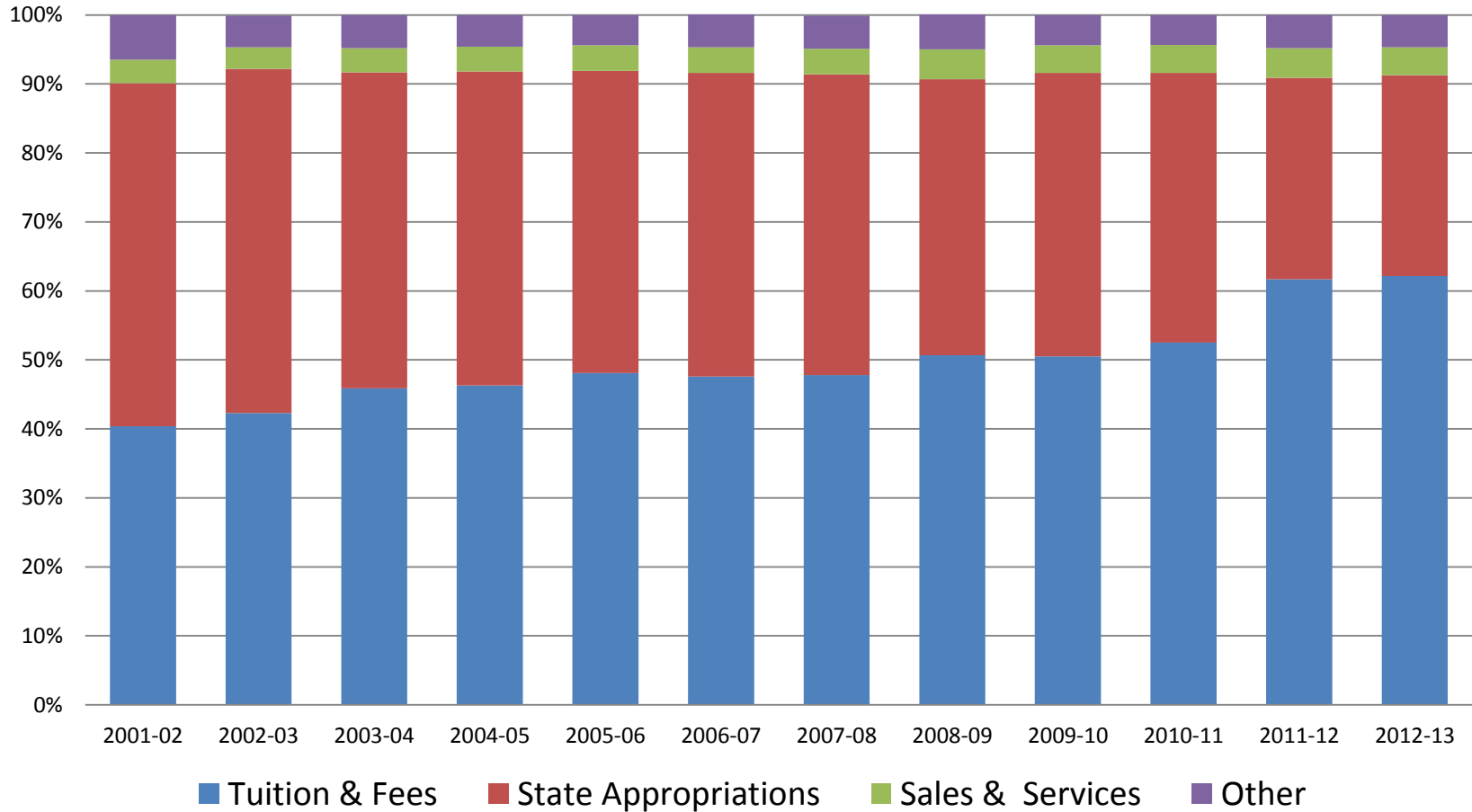
University Expenditures



Source: *Tennessee Higher Education Commission*



University Revenue

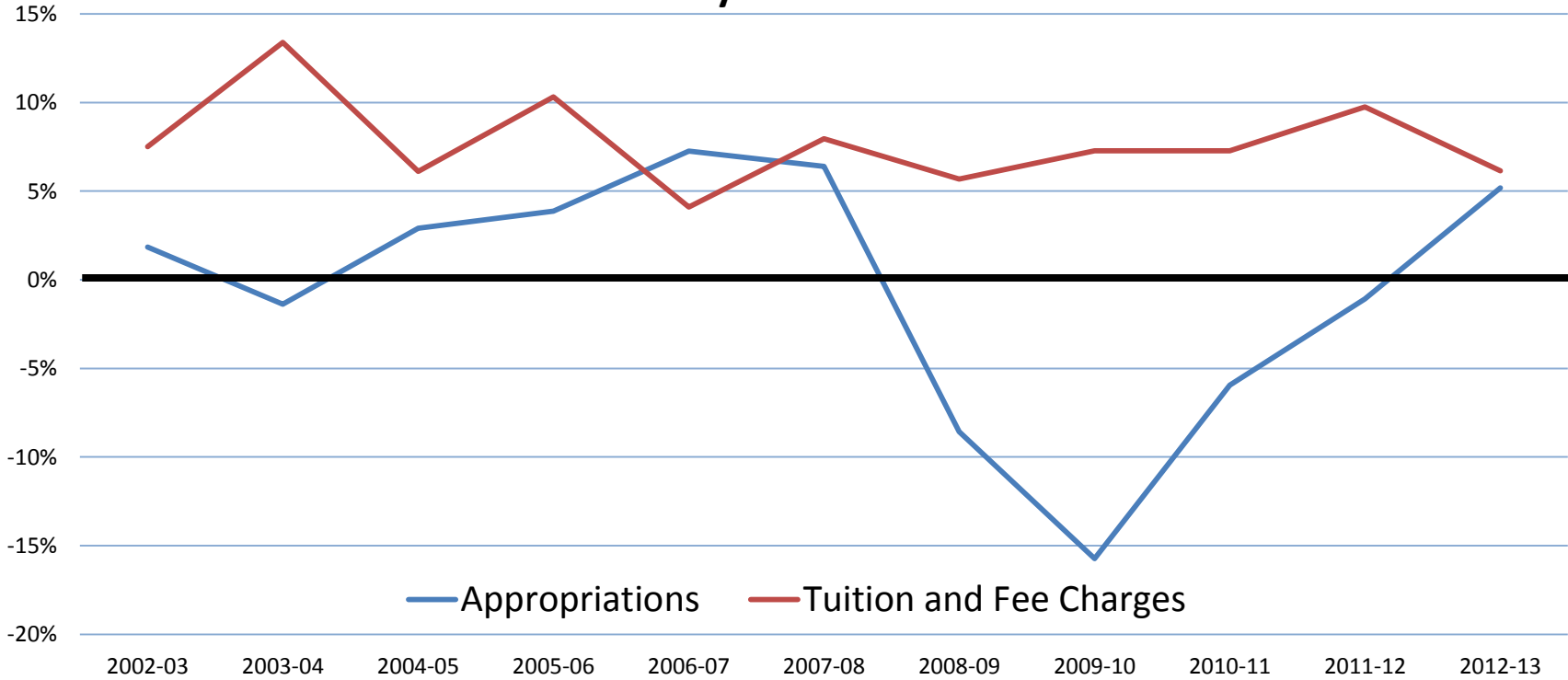


Source: *Tennessee Higher Education Commission*



Appropriations and Fees

Annual Percent Change in State Appropriations and Average University Tuition and Fees

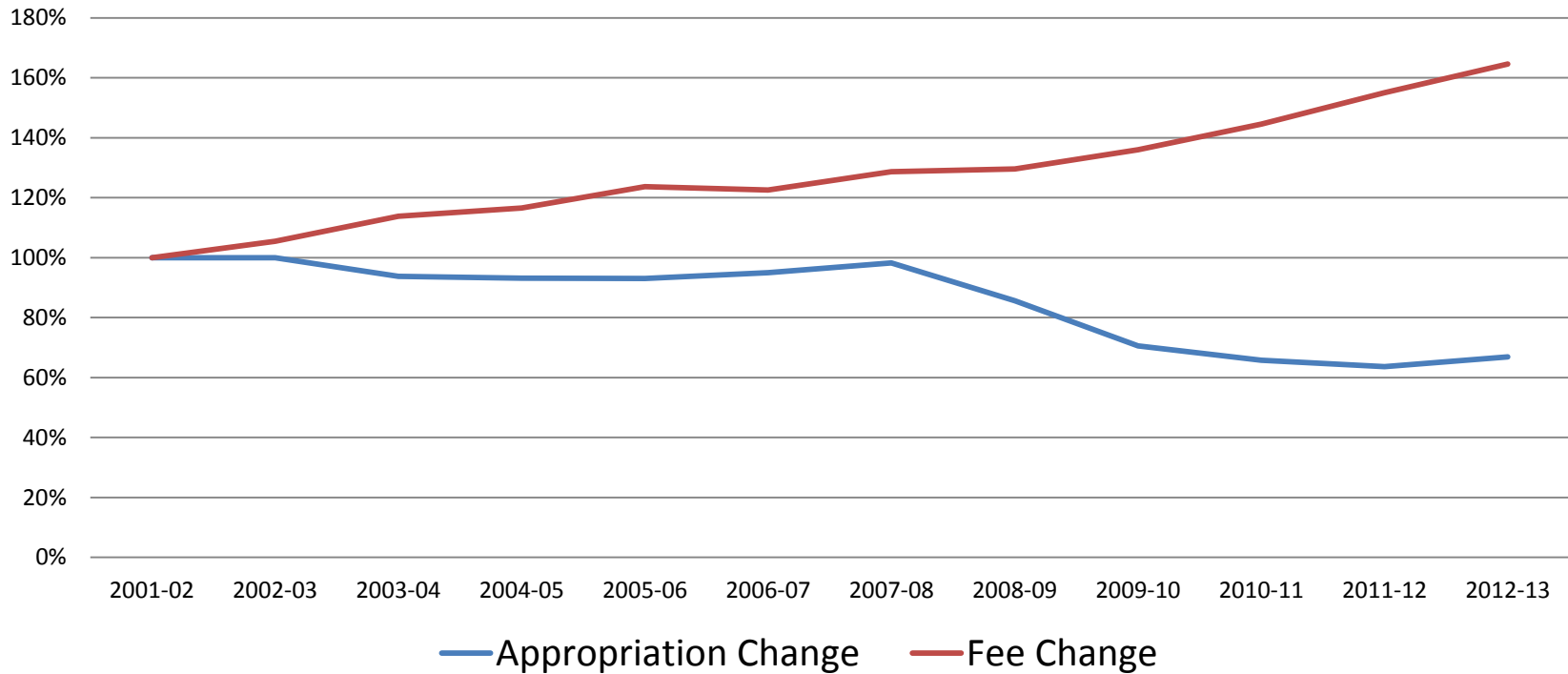


Source: *Tennessee Higher Education Commission*



CHANGE - Appropriations and Fees

University Change in Appropriations and Average Tuition and Fee Charges



Source: *Tennessee Higher Education Commission*



Tuition and Fee Rates – TBR Institutions

	2002-03	2007-08	2011-12	2012-13
University Average	\$3,502	\$5,227	\$6,979	\$7,408
Community College Average	\$1,740	\$2,628	\$3,532	\$3,686
Technology Centers	\$1,309	\$2,168	\$2,975	\$3,146

	One Year Change	Five Year Change	Ten Year Change
University Average	6.2%	41.7%	111.6%
Community College Average	4.4%	40.3%	111.8%
Technology Centers	5.7%	45.1%	140.3%

Source: *Tennessee Higher Education Commission*





Reaching Higher

Summary of Private Giving by *TBR Institution* --- --- *5-Year Average*

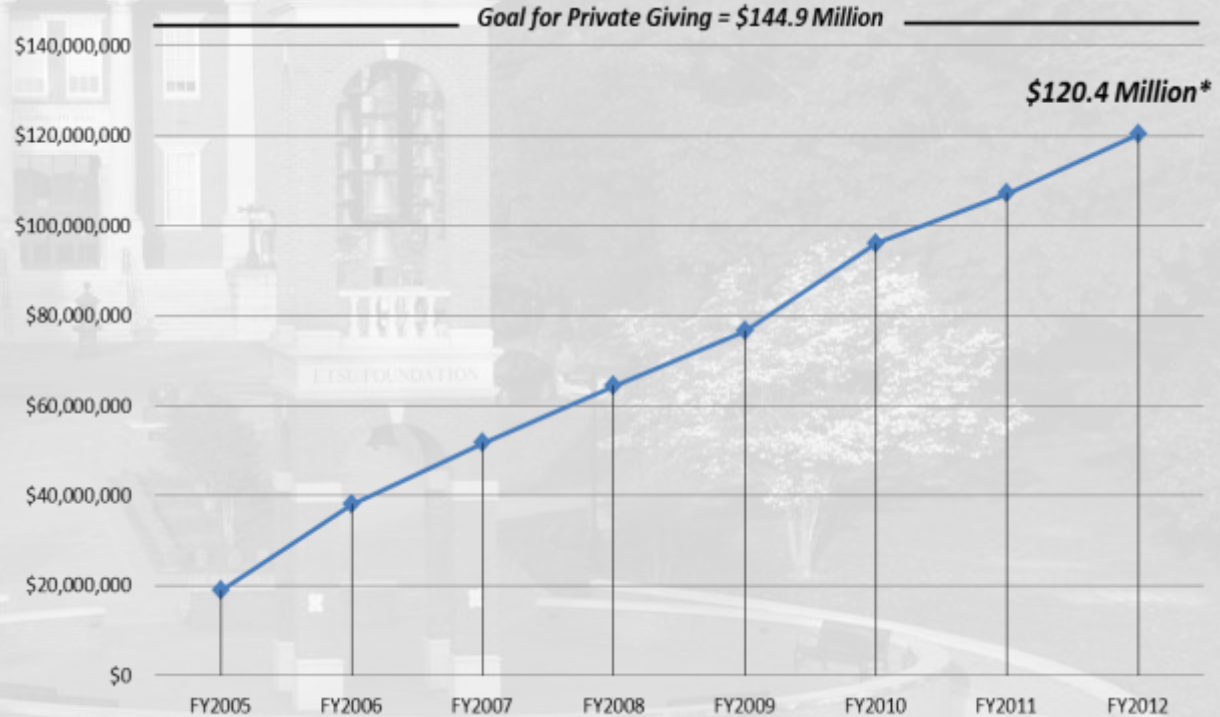
<u>INSTITUTION</u>	<u>GIFTS</u>	<u>E&G EXPENDITURES</u>	<u>PERCENTAGE of E&G</u>
Univ. of Memphis	\$41,295,045	\$286,222,438	14.43%
East Tennessee	\$14,917,988	\$143,213,266	10.42%
Tennessee Tech	\$5,039,237	\$101,498,358	4.96%
Austin Peay	\$3,646,067	\$81,625,950	4.47%
Middle Tennessee	\$8,841,418	\$224,612,074	3.94%
Tennessee State	\$3,043,610	\$106,062,601	2.87%



Reaching Higher

Private Giving

8 Years
into Campaign



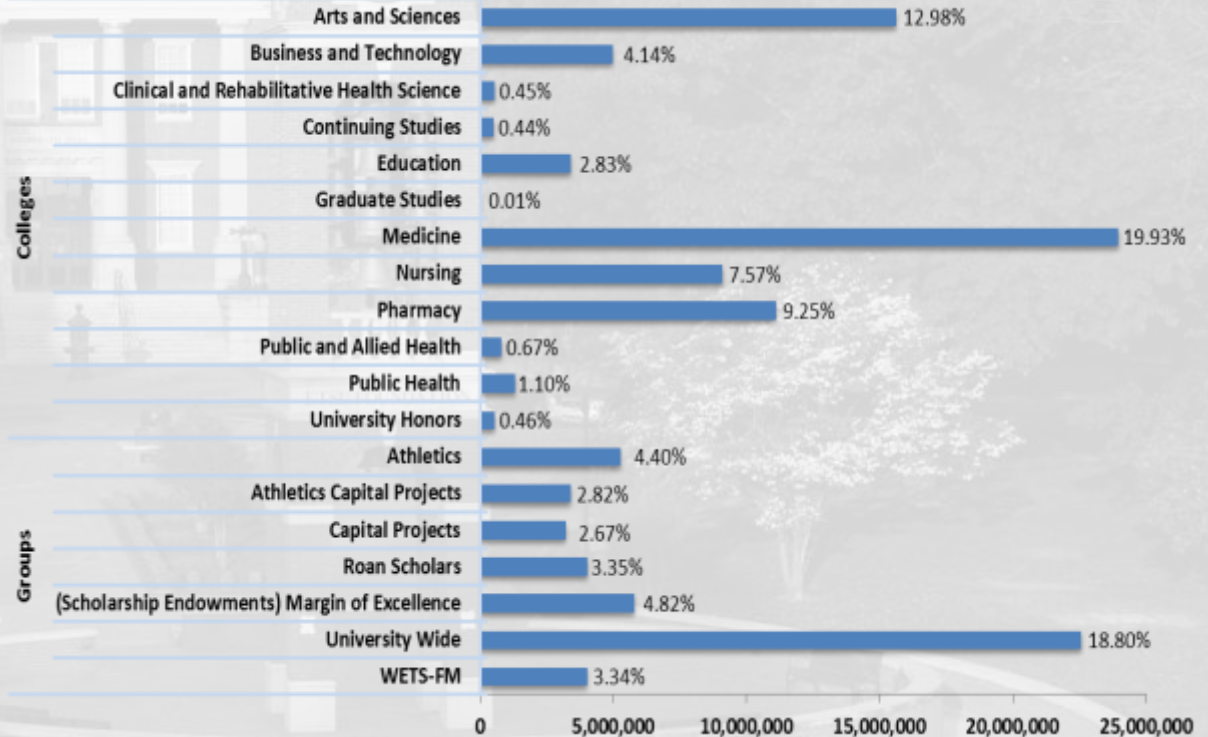
* This indicates that we are 83.1% toward our goal at 8 years into the 10-year campaign.



Reaching Higher

Private Giving by College/Group

8 Years
into Campaign
\$120.4 Million



*** Goal for Private Giving = \$144.9 Million**

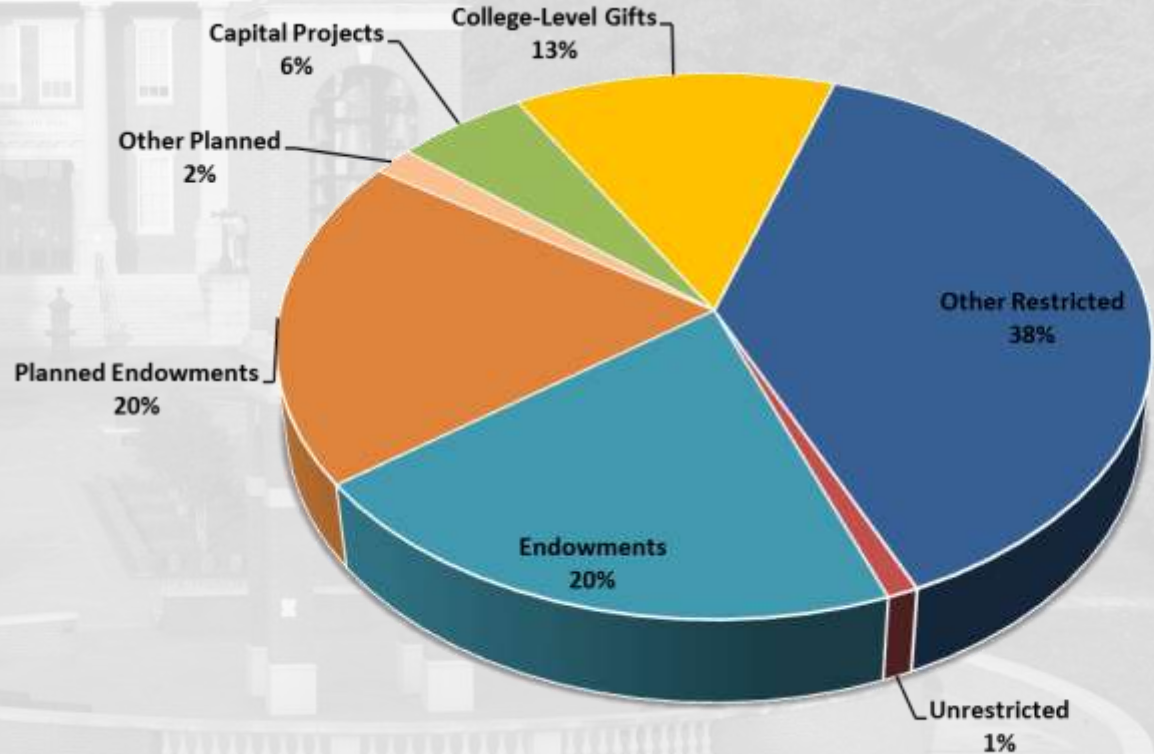
This indicates that we are 83.1% toward our goal at 8 years into the 10-year campaign.



Reaching Higher

Private Giving
by Purpose

8 Years
into Campaign
\$120.4 Million



* Goal for Private Giving = \$144.9 Million

This indicates that we are 83.1% toward our goal at 8 years into the 10-year campaign.

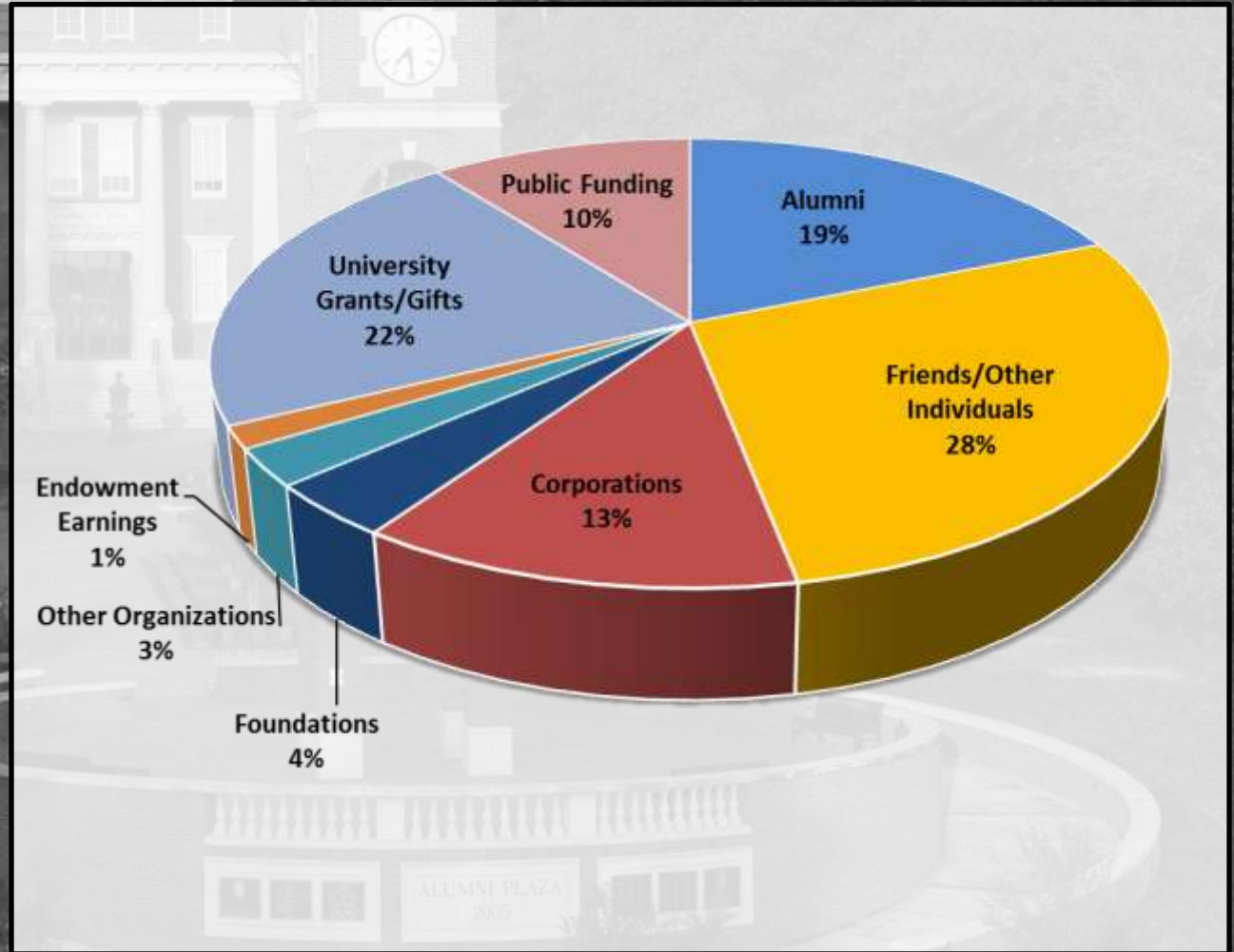


Reaching Higher

Combined Giving
by Source

8 Years
into Campaign

\$136.8 Million



Alumni Participation

Tennessee Public Universities	FY2008-09	FY2009-10	FY2010-11
Austin Peay State University	7.1%	7.8%	6.4%
East Tennessee State University	4.4%	4.1%	3.8%
Middle Tennessee State University	5.9%	5.6%	5.2%
Tennessee State University	4.4%	3.4%	3.9%
Tennessee Technological University	8.6%	8.8%	8.7%
The University of Tennessee	9.6%	9.8%	9.6%
The University of Tennessee at Chattanooga	4.5%	5.0%	4.5%
The University of Tennessee-Martin	5.1%	4.9%	4.9%
University of Memphis	6.2%	5.9%	5.8%

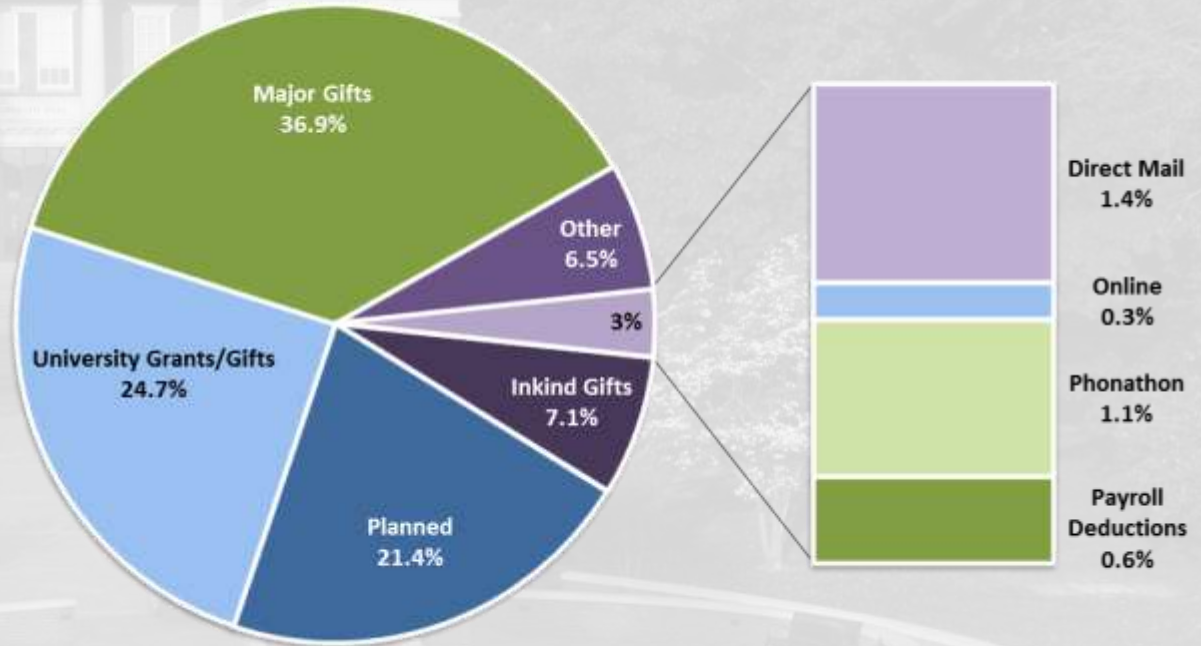




Reaching Higher

Private Giving
by
Source/Solicitation

8 Years
into Campaign
\$120.4 Million



*** Goal for Private Giving = \$144.9 Million**

This indicates that we are 83.1% toward our goal at 7.5 years into the 10-year campaign.

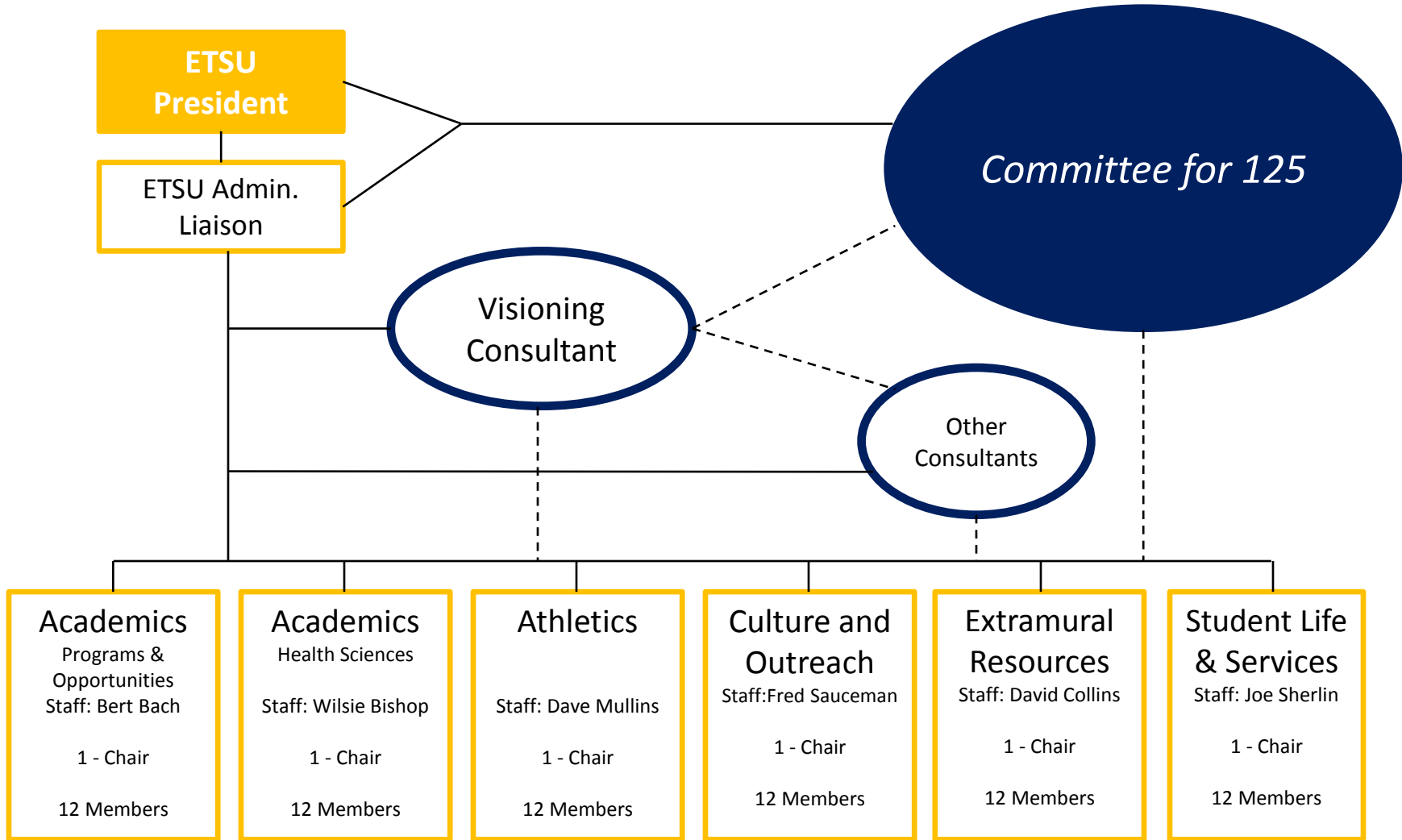
Committee for 125

Visioning Process



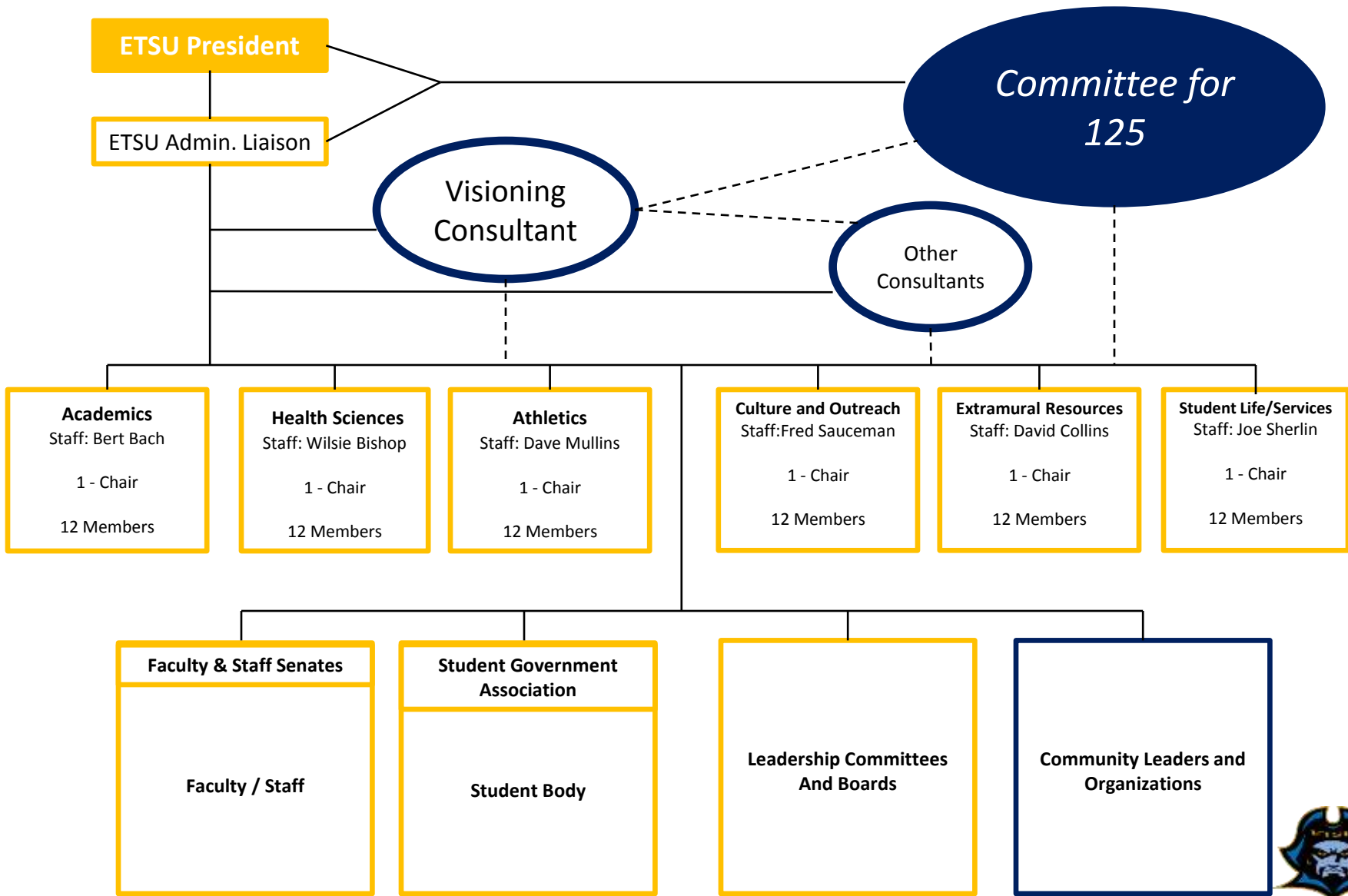
Source: www.epic2020.org





ETSU Visioning Plan - Organizational Chart





Task Force Process

Nominations for Chairs and Committee Members

Staff Resource Member

Faculty / Staff / Students

Public

Selection Committee

President

Comm. 125 Chair

Admin. Liaison

Staff Resource Member

Task Force Chair



Tentative Task Force Timeline

Aug. 31 - Draft Report for *Committee for 125*

Sept. 4 - Chair Selections

Sept. 5 - Solicit Nominations (14 days)

Sept. 6 - Consultant Visit / Task Force-Chairs Mtg.

Sept. 19 - Nominations Close

Sept. 24 - Committee Selections

Oct. 1 - Task Forces Meet

Mid-November - *Committee for 125* Meeting w/ Chairs

Early Feb.- *Committee for 125* Meeting to Approve Draft

March / April 2013 - Final



Technology and Innovation

- ETSU Online Courses - 450
 - Synchronous (Live) – 50
 - Asynchronous – 400
- Online Enrollment – 40% growth 2010-12
- iTunes – ETSU Video Downloaded every 10 seconds
- 60,000 Downloads Per Week (iTunes only)
- iTunes / YouTube – 3,000 Media Files
- 1,500 Class Recordings Per Semester
- Online Classes See Cheating Go High-Tech
 - *The Chronicle of Higher Education, June 8, 2012*



Source: *ETSU eLearning*



EPIC 2020

Future Possibilities



Source: www.epic2020.org

